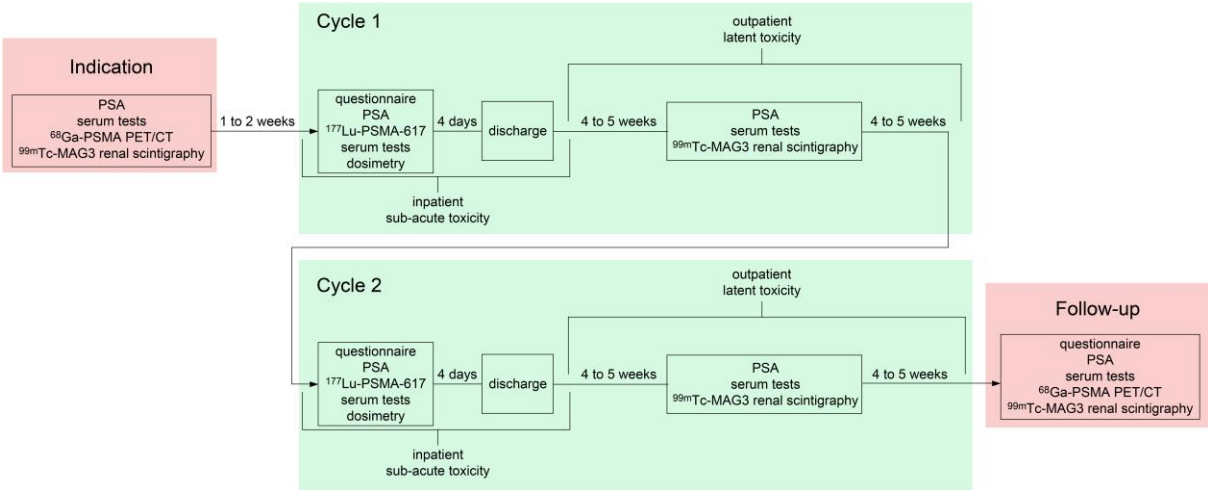


Preliminary experience with dosimetry, response and patient reported outcome after ¹⁷⁷Lu-PSMA-617 therapy for metastatic castration-resistant prostate cancer

Supplementary Material



Supplemental Figure S1. Flow chart for ¹⁷⁷Lu-PSMA-617 RLT and follow-up.

Supplemental Table 1. Response eight to ten weeks after the second cycle according to ⁶⁸Ga-PSMA PET and AP level

Category	PET	AP
PR	11 (73%)	2 (13%)
SD	3 (20%)	7 (47%)
PD	1 (7%)	5 (33%)

Abbreviations: SD, stable disease; PR, partial response; PD, progressive disease.

Response to RLT - Details

PET response was determined by baseline to follow-up change in sum of SUV_{max} of all lesions (to a maximum of three lesions per organ). Based on PERCIST 1.0 [1], progressive disease (PD) was defined as 30% or greater increase in summed SUV_{max} , whereas partial response (PR) was defined as 30% or greater decrease in SUV_{max} .

References

1. Wahl RL, Jacene H, Kasamon Y and Lodge MA. From RECIST to PERCIST: Evolving Considerations for PET response criteria in solid tumors. J Nucl Med. 2009; 50 Suppl 1:122S-150S.