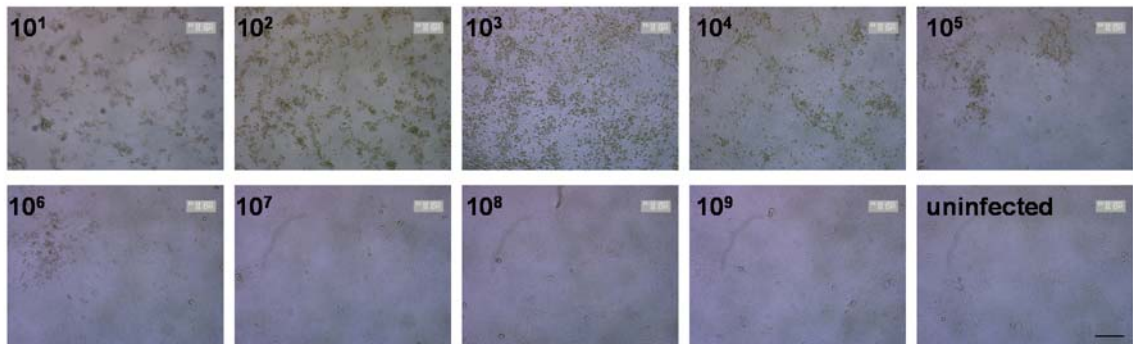
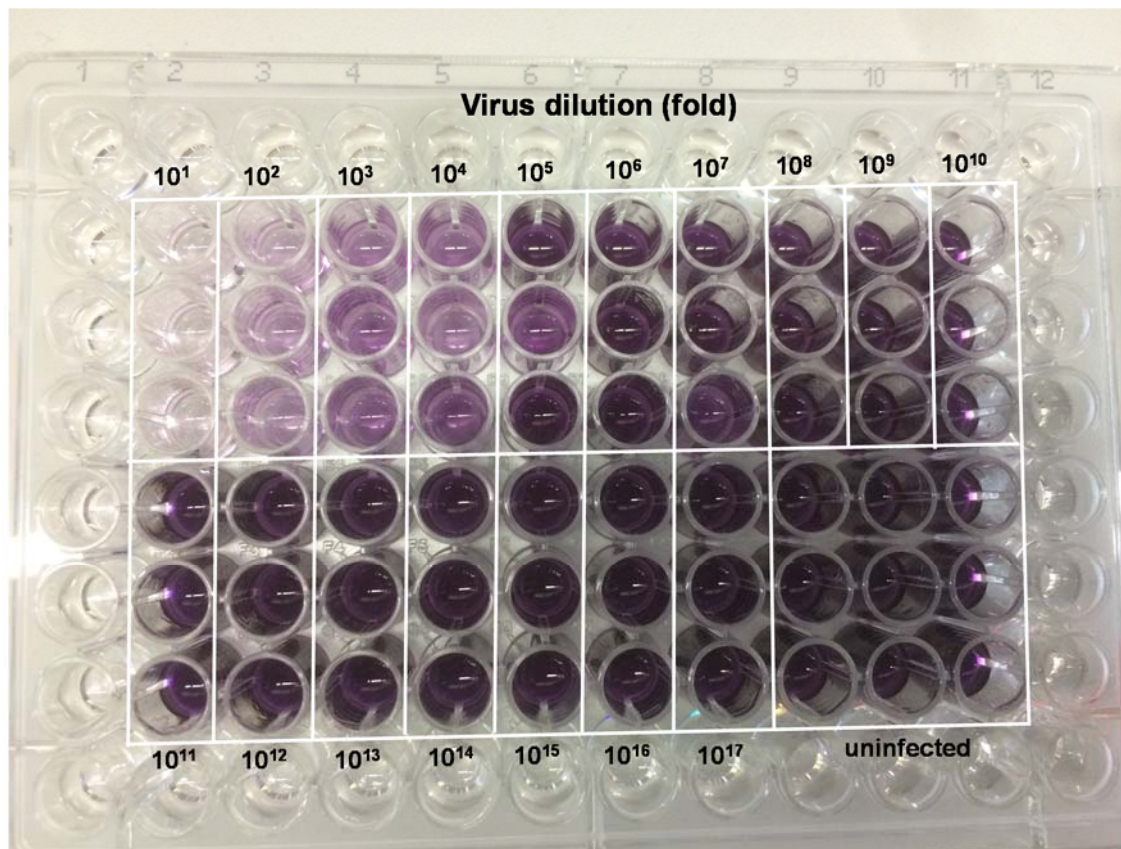


## Supplemental material

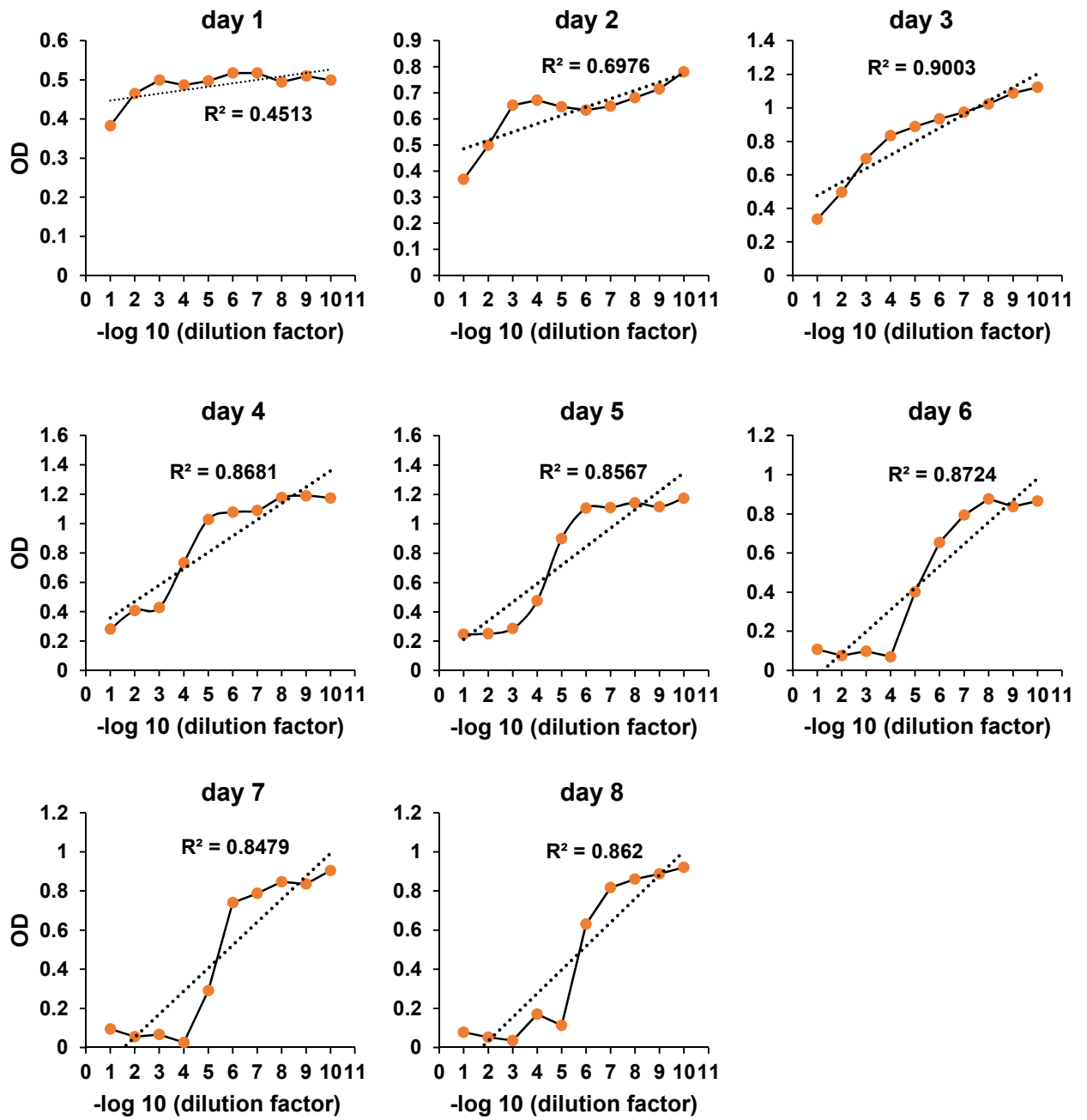
A)



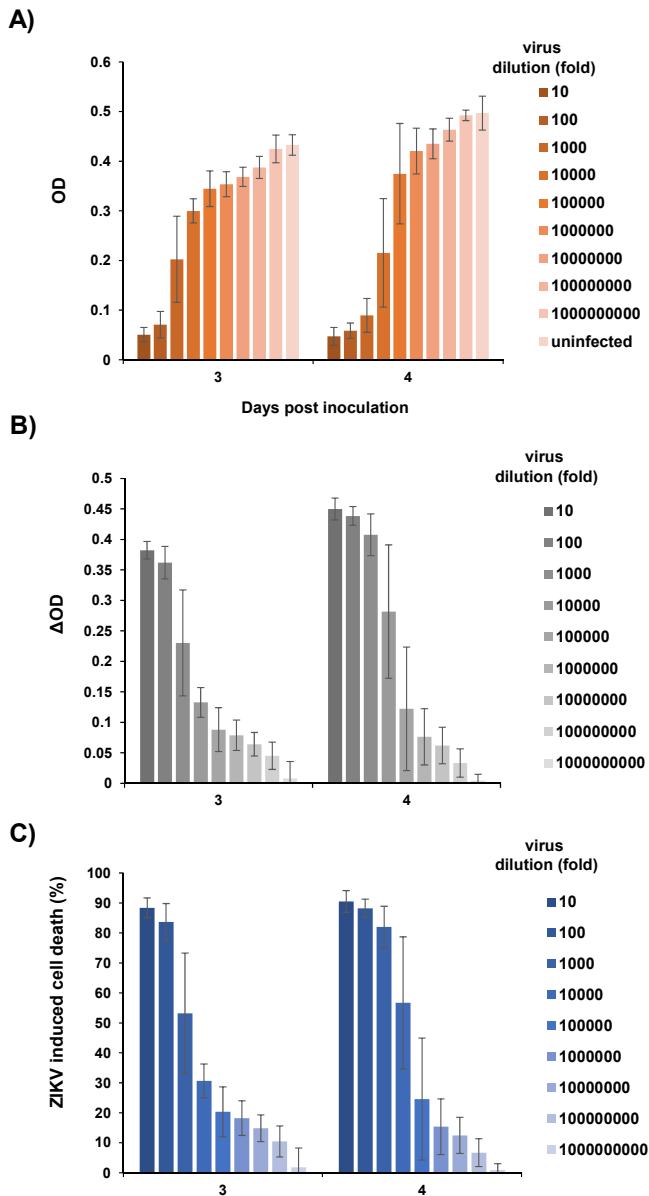
B)



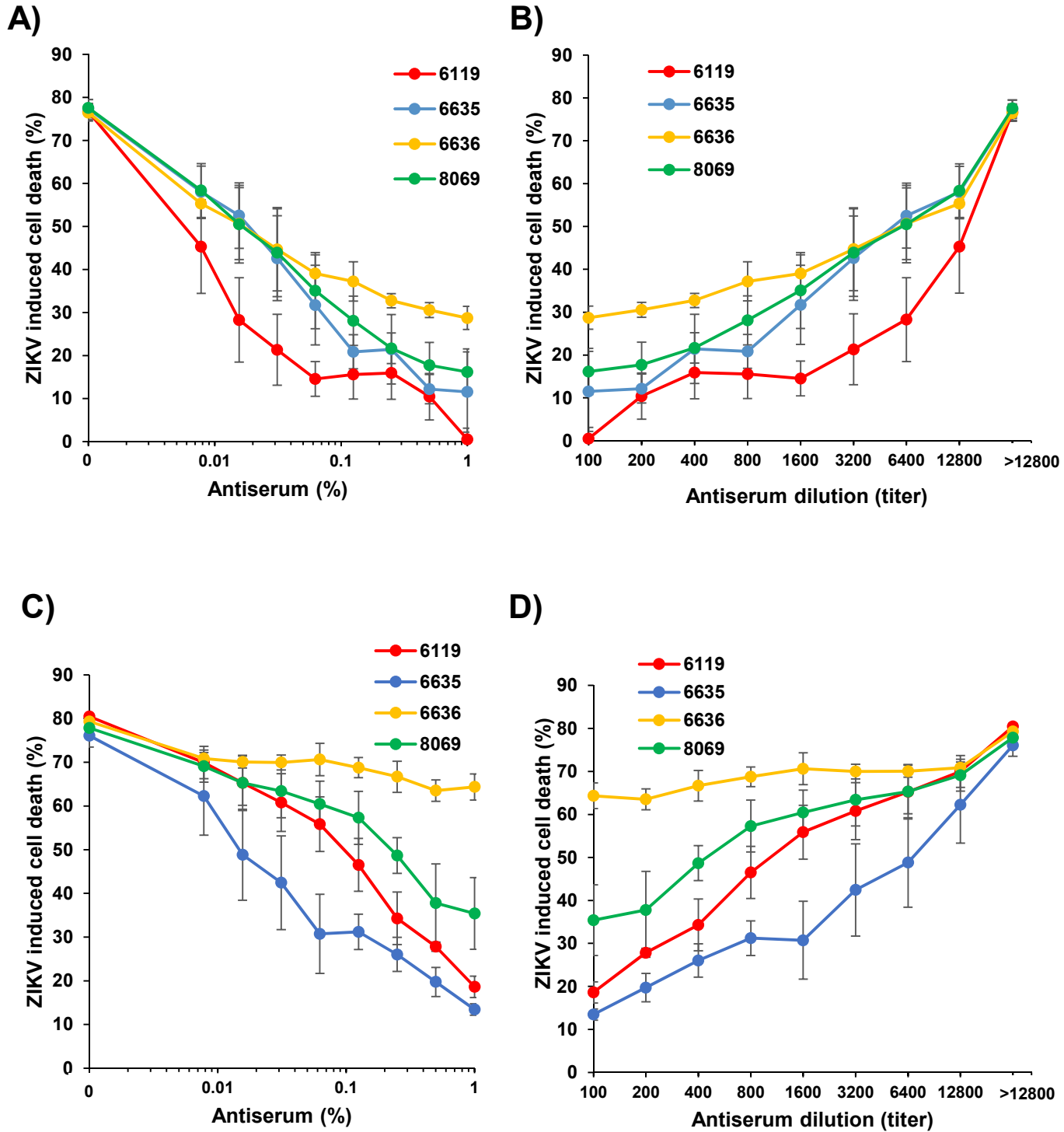
**Figure S1. ZIKV induced cytopathic effect in Vero E6 cells and its quantification by MTT assay.**  $6 \times 10^3$  cells seeded in a 96 well plate were infected with serial 10-fold dilutions of ZIKV MR766 stock. **a)** At day 4, photographs of individual wells were taken showing cellular detachment and plaque formation after inoculation with  $10^1$  to  $10^6$  ZIKV dilutions. Scale bar is 200  $\mu\text{m}$ . **b)** Photograph of the microtiter plate after dissolving the formazan crystals. At day 4, MTT reagent was added to the cells, after 3 hours of incubation the supernatants were removed, and the formed formazan crystals by live cells were dissolved in DMSO/ethanol.



**Figure S2. Correlation analysis of the ODs obtained after different times post infection with the viral inoculum.** Linear regression analysis of data shown in Figure 1a.  $R^2$  value is the coefficient of correlation.



**Figure S3. Representative results of the MTT-based assay to quantify ZIKV infection in HOS cells.**  $6 \times 10^3$  HOS cells were seeded in 96 well plates. The next day, 20  $\mu$ l of serial 10-fold dilutions of the ZIKV strain MR766 were added. After 3 and 4 days, cells were monitored microscopically and washed once with medium to remove detached virally infected cells. Thereafter, 20  $\mu$ l of MTT was added to remaining adherent cells in 200  $\mu$ l. After 3 hours, formazan crystals were dissolved in DMSO/ethanol and absorbance of the colored solution was quantified by measuring absorbance at 490 nm by a spectrophotometer. **a)** Raw data obtained from live cells (optical densities; ODs) derived from triplicate infections  $\pm$  standard deviation. **b)** ODs derived from live cells in infected cell culture were subtracted from ODs obtained from uninfected control cells. The resulting  $\Delta$ ODs numbers provide an indirect value for all cells that detached due to virus infection. **c)** The percentage of ZIKV induced cell death was calculated by normalizing the  $\Delta$ OD values to the OD value of the uninfected control.



**Figure S4. Neutralization of ZIKV infection by anti-ZIKV antisera.** Dose-response curves of the four tested anti-Zika antisera against the MR766 (a, b) and the GWUH (c, d) strain. Values were obtained from the experiment shown in Fig. 4. In a) and c), the x-axis depicts the final concentration of antiserum in cell culture in % (v/v). In b) and d), the x-axis shows the antiserum dilutions (titer) allowing calculation of IC<sub>50</sub> and IC<sub>80</sub> values shown in Table 2.