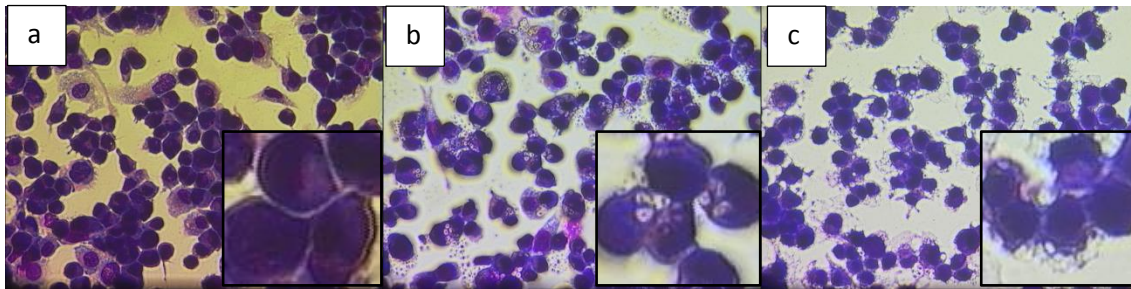


Supplemental figure 1



Supplemental figure 1 – Inhibition of Phagocytosis

PMA/THP-1 cells seeded onto glass cover-slips and pre-incubated with cytochalasin D for 1 hour before being incubated with zymosan beads. Cells were washed and differentially stained. Untreated cells (a) appeared large and round with cytoplasm staining pale purple whilst the nucleus stained dark purple. Cells treated with zymosan alone (b) showed cytoplasmic inclusions appearing as small white rings against the purple background. Cells pre-incubated with cytochalasin D (c) showed no cytoplasmic inclusions. Inset pictures are magnified representative regions of each treatment.