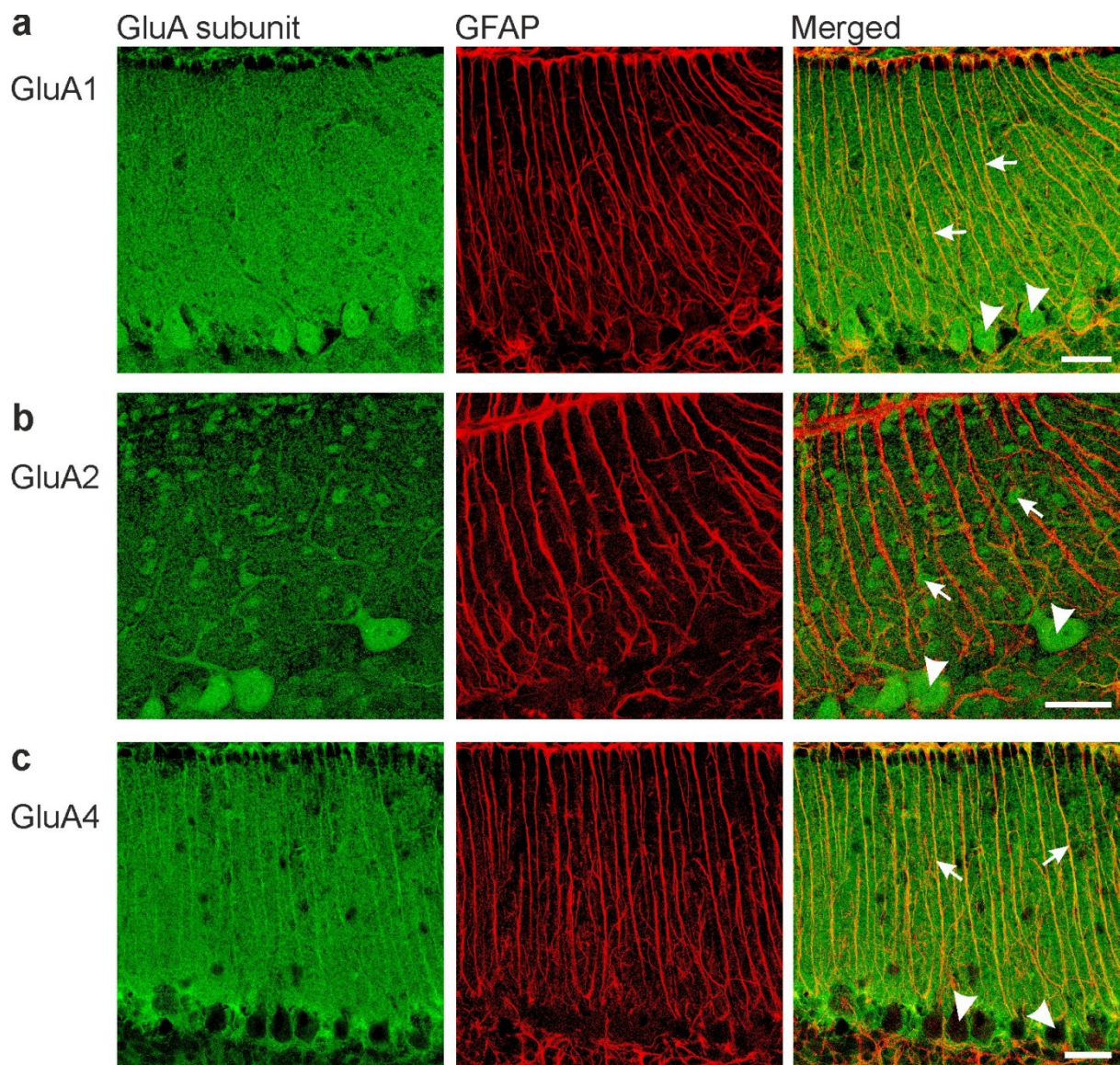


Ca²⁺-permeable AMPA receptors in mouse olfactory bulb astrocytes

Damian Droste, Gerald Seifert, Laura Seddar, Oliver Jädtker, Christian Steinhäuser, Christian Lohr



Supplementary Fig. S1. Antibody staining of cerebellar tissue. **a)** GluA1 antibodies (green) labeled Purkinje cells (arrowheads) and Bergmann glial cells (arrows). **b)** GluA2 immunoreactivity was detected in Purkinje cells (arrowheads) and interneurons (arrows). **c)** GluA4 immunoreactivity was detected in Bergmann glial cells (arrows), whereas Purkinje cells were not labeled (arrowheads). Scale bars: 20 μm .