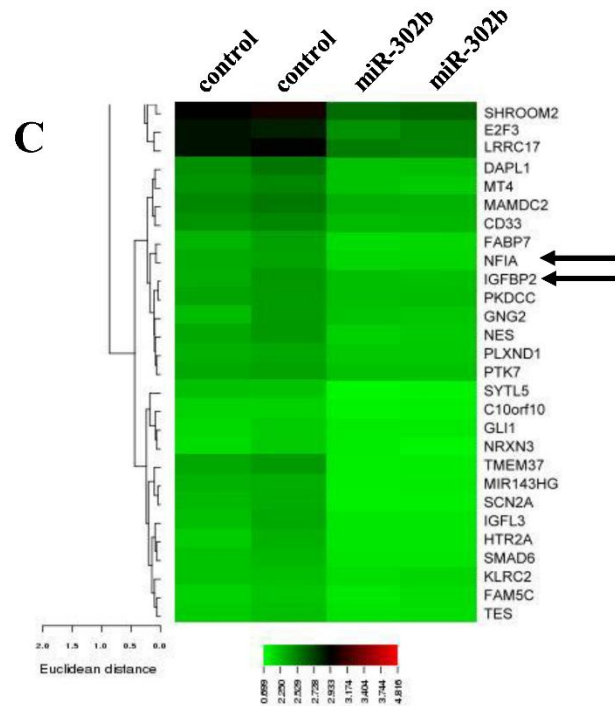
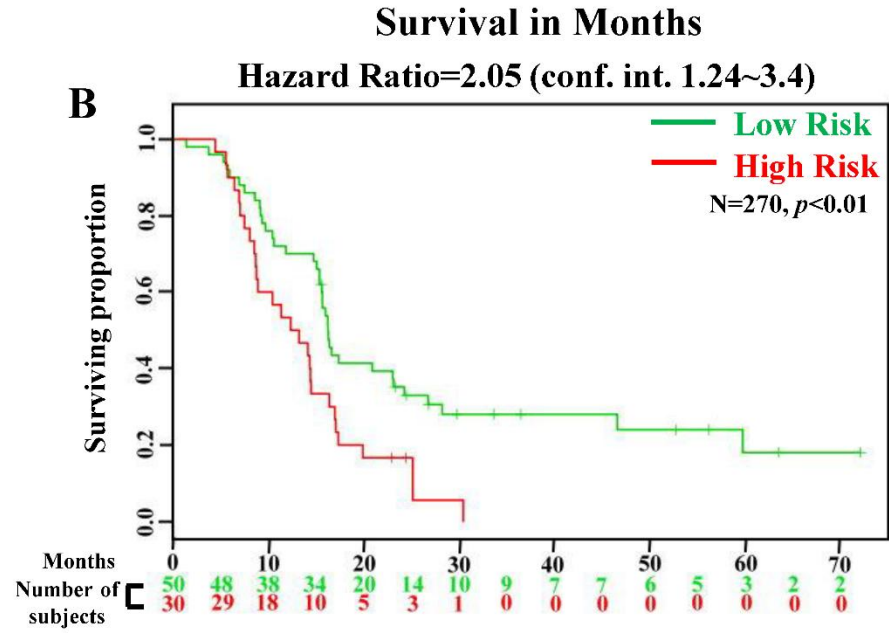
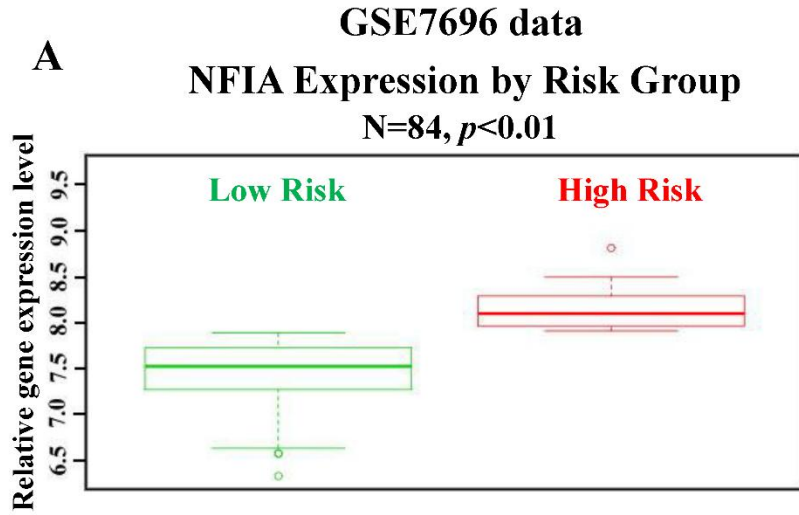


S2 Fig



S2 Figure. Validation of the effects of NFIA on patient survival in another GEO dataset profiling. (A) Relative NFIA expression levels according to GBM patient risk group based on GSE7696 profiling. Higher risk patients had higher gene expression, denoted by red symbols. Conversely, lower gene expression was associated with higher survival, denoted in green. (B) Kaplan–Meier analysis of patient survival data from GSE7696 profiling. The *x*-axis values indicate the number of patients per group. The red curves indicate high-risk patients. The green curves indicate low-risk patients. The plus sign indicates censored observations. The *p* values were calculated using the log-rank test. (C) The heat map shows the relative NFIA and IGFBP2 levels. The figure of heat map was intercepted from group III of Fig. 1F. (D) Effects of overexpression and knockdown on NFIA levels. After overnight culture cells were transfected with 1 μ g of NFIA OE plasmids, empty vectors, NFIA shRNA, and scrambled shRNA for 24 h, the NFIA protein levels were measured using immunoblotting.