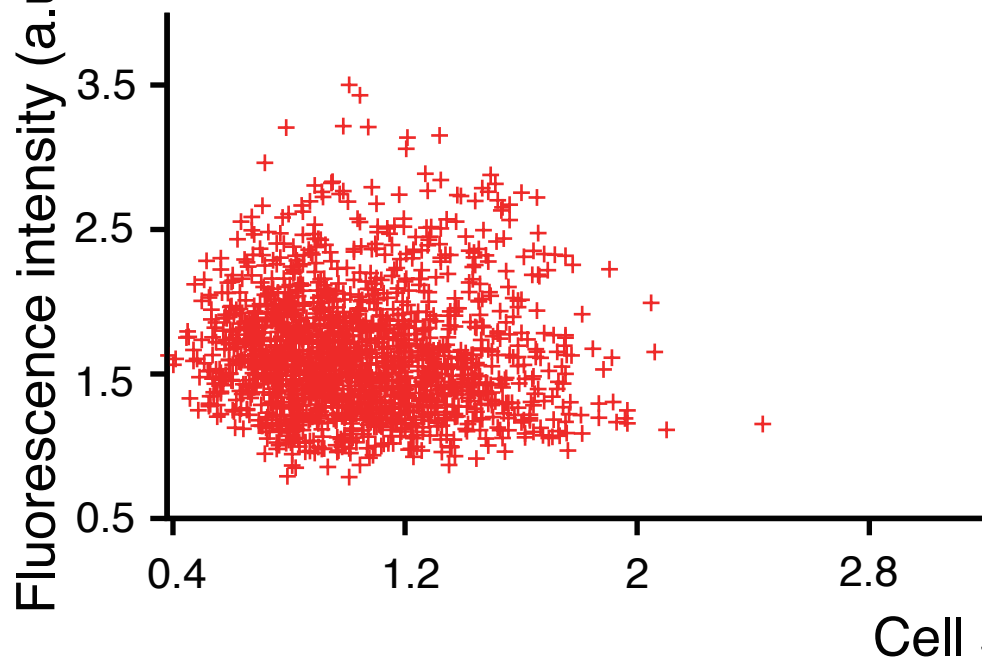


**A**

	- SM				+ SM			
Time (min)	#1	#2	#3	Ave. $\pm$ SD	#1	#2	#3	Ave. $\pm$ SD
200	0.06	0.01	0.13	0.06 $\pm$ 0.05	0.06	0.15	0.06	0.09 $\pm$ 0.04
300	0.00	-0.05	0.05	0.00 $\pm$ 0.04	-0.03	-0.05	-0.08	-0.05 $\pm$ 0.02
400	-0.07	-0.11	-0.03	-0.07 $\pm$ 0.03	-0.15	-0.11	-0.18	-0.14 $\pm$ 0.03

**B**

-SM #2, t = 300 min, N = 1567

**C**

+SM #2, t = 300 min, N = 1610

