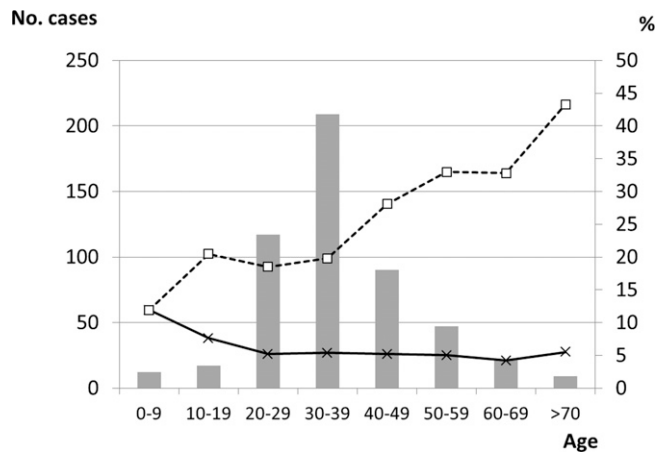


SUPPLEMENTAL FIGURE 1. Distribution of population study according to birthplace (European vs. non-European subjects) and region of exposure. The size of pie charts is proportional to the number of subjects studied.



SUPPLEMENTAL FIGURE 2. Number of cases (and rate) of dengue by groups of age. x—x: rate of cases. □—□: rate of past infections.

SUPPLEMENTAL TABLE 1  
Distribution of cases of dengue by years and region of exposure (last country visited)

Region of exposure	Years									Total
	2005	2006	2007	2008	2009	2010	2011	2012	2013	
Africa	8	14	37	17	17	27	14	15	40	189
Northern Africa			1					1	2	4
Algeria									1	1
Egypt			1							1
Sudan									1	1
Tunisia								1		1
Sub-Saharan Africa	8	14	36	17	17	27	14	14	38	185
Eastern Africa	2	2	5		2	3	3	2	6	25
Ethiopia			3						1	4
Kenya	1	1			2	1	1	2	1	9
Madagascar						1			2	3
Malawi			1			1				2
Mozambique	1									1
Rwanda									1	1
Somalia							1			1
Tanzania		1	1						1	3
Uganda							1			1
Middle Africa	2	9	28	14	10	12	5	8	27	115
Angola			1		1	2			3	7
Cameroon	1	2			2	1		1	2	9
Chad		1	1		1	1				3
Democratic Republic of the Congo				2	1		1		3	8
Equatorial Guinea	1	6	26	11	6	7	4	7	19	87
Gabon				1						1
Southern Africa	1									1
Swaziland	1									1
Western Africa	3	3	2	3	5	12	6	4	5	43
Benin				1		1				2
Burkina Faso					1				1	2
Gambia							1	2		3
Ghana					1	1				2
Guinea			1							1
Guinea Bissau						1				1
Ivory Coast	1					2				3
Liberia						1	1			2
Mali	1	2			1	1				5
Nigeria		1	1		1	1	1	1	1	7
Senegal	1			2	1	3	3	1	3	14
Sierra Leone						1				1
Americas	8	8	29	22	14	23	19	20	31	174
Latin America and the Caribbean	8	8	29	22	14	23	19	20	31	174
Caribbean		3	5	1	2	4	2	2	6	25
Cuba		1				1				2
Dominican Republic		1	4	1	1	3			5	15
Haiti		1			1		2	2	1	7
Puerto Rico			1							1
Central America	4	2	9	4	6	5	10	5	6	51
Costa Rica	1		2		1		4		1	9
El Salvador		1	2				1			4
Guatemala	1		2	2		2	2			9
Honduras							2		1	3
Mexico			2	1	2	1		3	2	11
Nicaragua	2	1	1		1	2		2		9
Panama				1	2		1		2	6
South America	4	3	14	17	6	14	7	13	19	97
Argentina			1							1
Bolivia			5	6	2	1	3	4	5	26
Brazil	1	1	2	4	1	3	1	1	5	19
Colombia	1		1	1	1	3		4	2	13
Ecuador		1		3	1	1	1	1	3	11
French Guiana						1				1
Paraguay		1				1	1	1	2	6
Peru			1	1		2	1	1	1	7
Uruguay				1				1		2
Venezuela	2		4	1	1	2			1	11

(continued)

SUPPLEMENTAL TABLE 1  
Continued

Region of exposure	Years									Total
	2005	2006	2007	2008	2009	2010	2011	2012	2013	
Asia	9	6	12	13	11	25	8	10	19	113
Eastern Asia									1	1
China									1	1
Southern Asia	6	5	6	6	6	14	3	6	6	58
Bangladesh						1		1		2
Bhutan					1					1
India	4	5	6	6	5	13	3	5	5	52
Nepal									1	1
Sri Lanka	2									2
Southeastern Asia	3	1	6	7	5	11	5	4	12	54
Cambodia	2			1		2			1	6
Philippines			1				1	1		3
Indonesia		1	3		2	5			2	13
Myanmar	1		1							2
Thailand			1	5	1	2	3	1	8	21
Viet Nam				1	2	2	1	2	1	9
Oceania						1			1	2
Papua New Guinea						1				1
French Polynesia									1	1
Unknown	3	3	4	1	1	1		1		14
Total	28	31	82	53	43	77	41	46	91	492