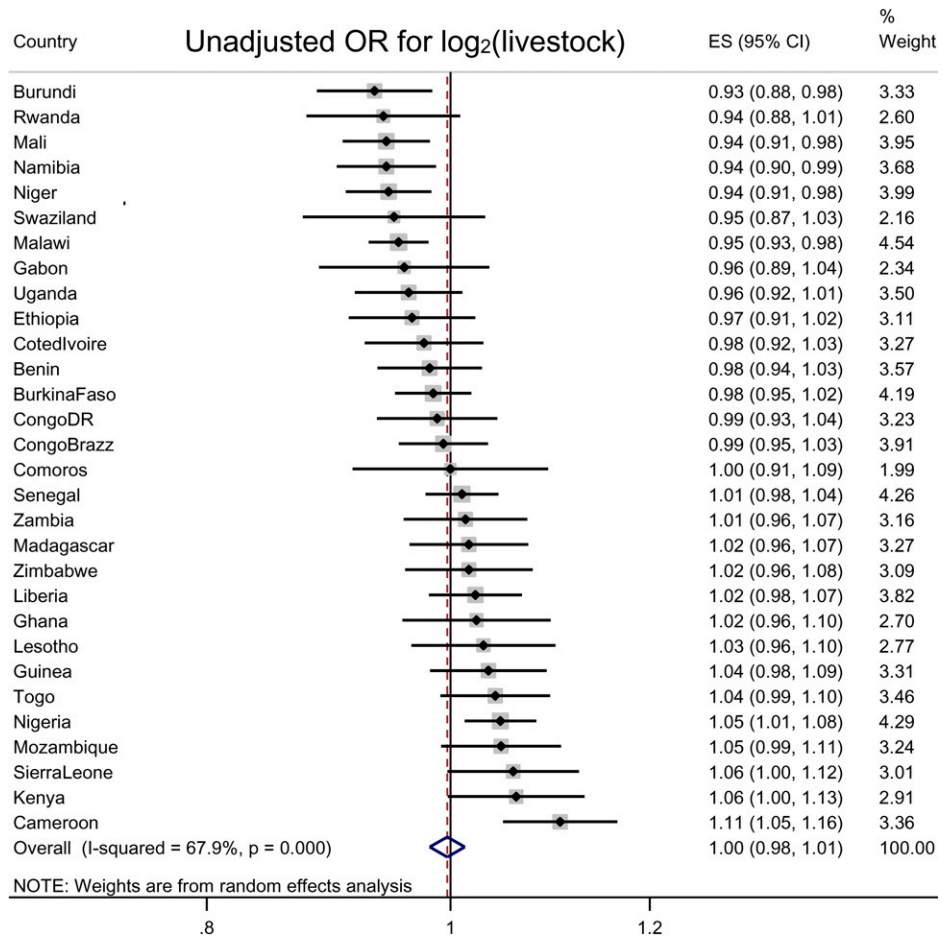
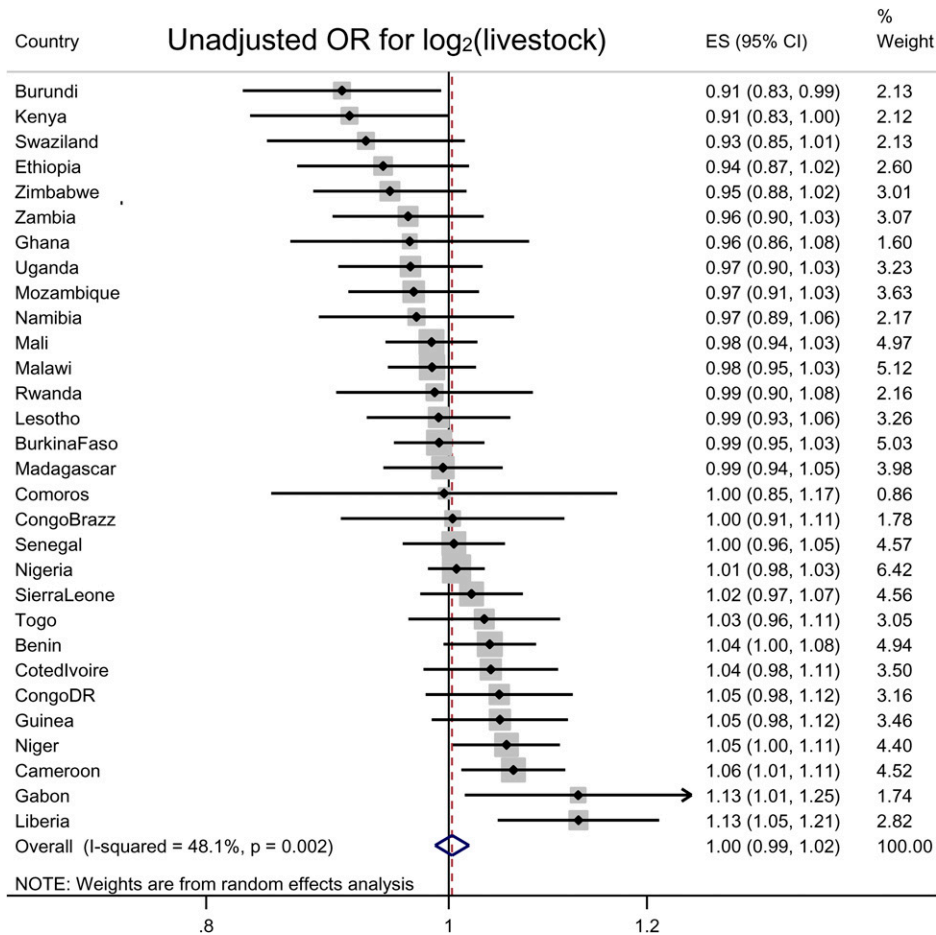


SUPPLEMENTAL FIGURE 1. Unadjusted odds ratio for stunting associated with a log₂ increase in animal ownership.



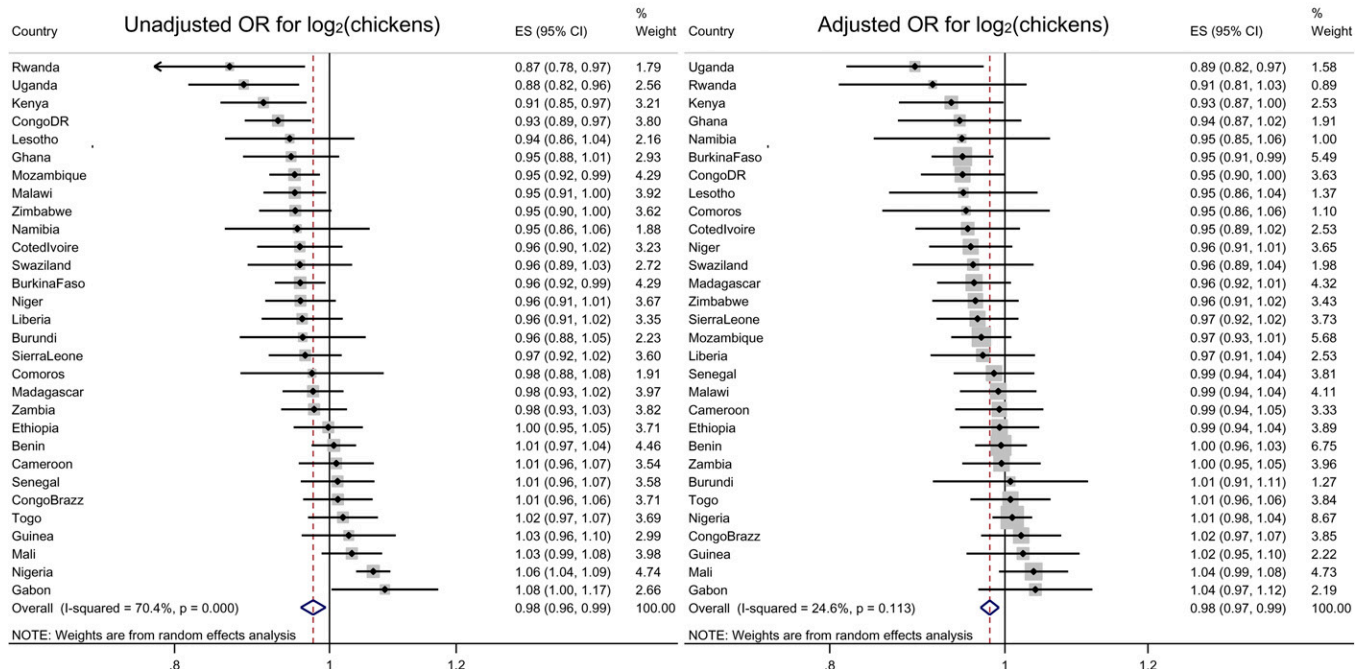
SUPPLEMENTAL FIGURE 2. Unadjusted odds ratio for diarrhea associated with a \log_2 increase in animal ownership.



SUPPLEMENTAL FIGURE 3. Unadjusted odds ratio for mortality associated with a \log_2 increase in animal ownership.

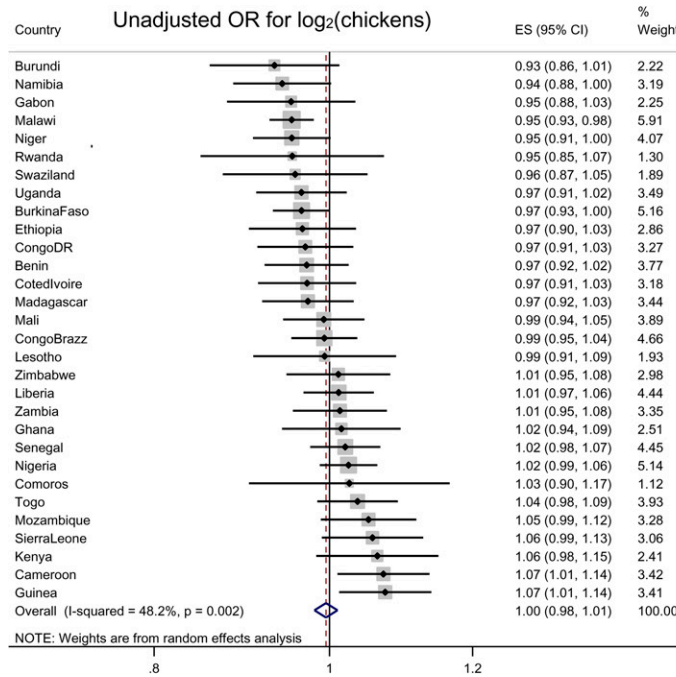
A Unadjusted OR's for stunting associated with chickens

B Adjusted OR's for stunting associated with chickens

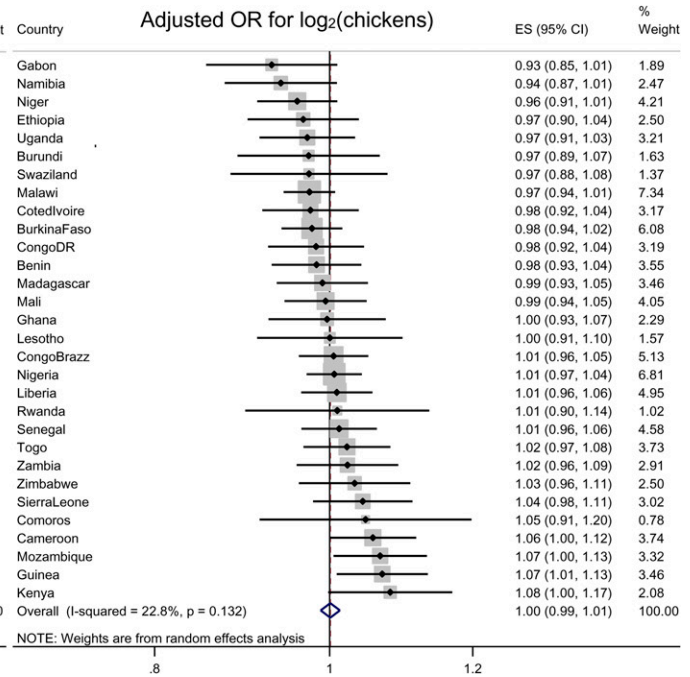


SUPPLEMENTAL FIGURE 4. (A) Unadjusted odds ratios (ORs) for stunting associated with a \log_2 increase in chickens. (B) Adjusted ORs for stunting associated with a \log_2 increase in chickens.

A Unadjusted OR's for diarrhea associated with chickens

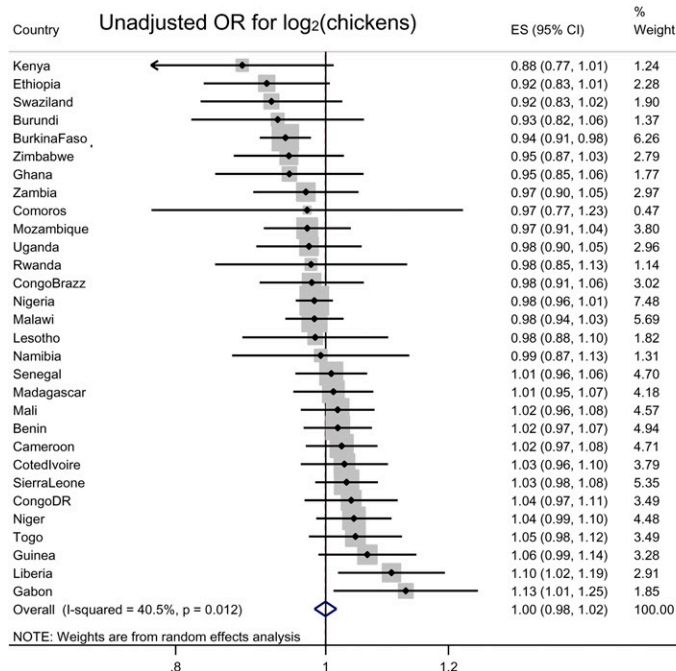


B Adjusted OR's for diarrhea associated with chickens

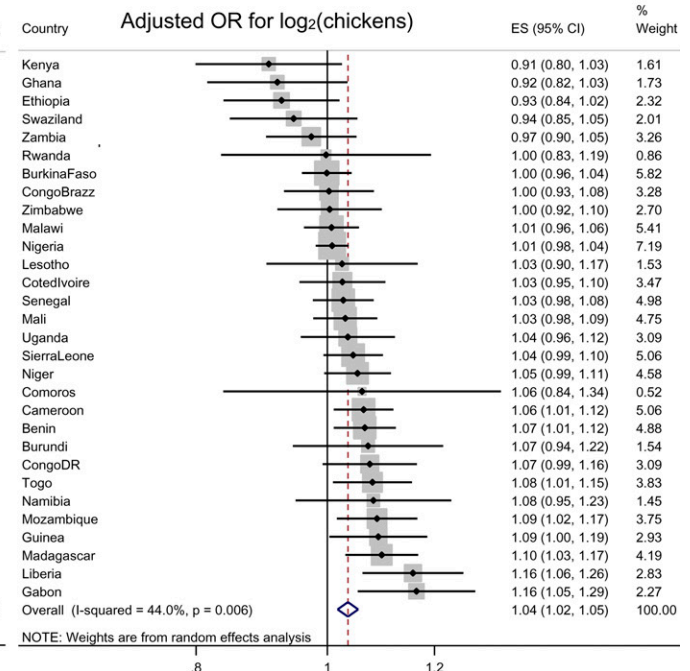


SUPPLEMENTAL FIGURE 5. (A) Unadjusted odds ratios (ORs) for diarrhea associated with a log₂ increase in chickens. (B) Adjusted ORs for diarrhea associated with a log₂ increase in chickens.

A Unadjusted OR's for mortality associated with chickens



B Adjusted OR's for mortality associated with chickens



SUPPLEMENTAL FIGURE 6. (A) Unadjusted odds ratios (ORs) for mortality associated with a log₂ increase in chickens. (B) Adjusted ORs for mortality associated with a log₂ increase in chickens.