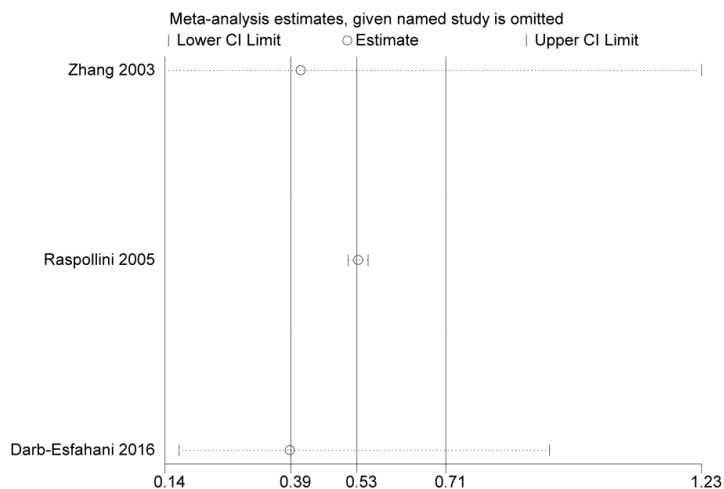


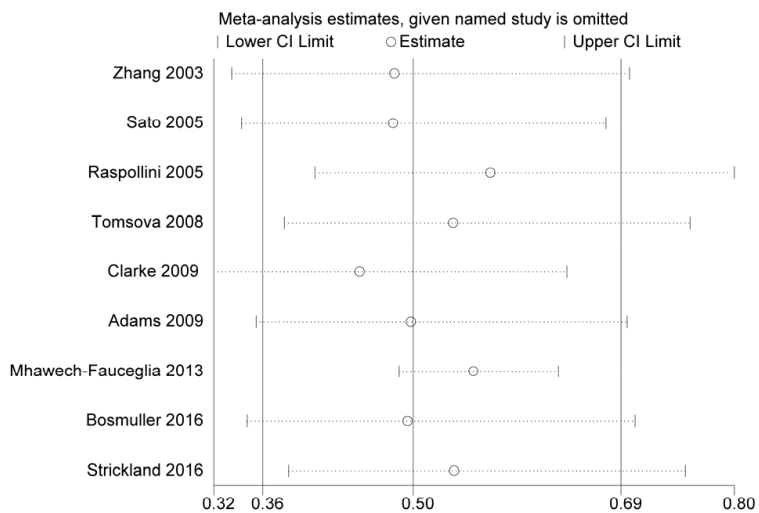
The prognostic value of tumor-infiltrating T lymphocytes in ovarian cancer

SUPPLEMENTARY FIGURES

A

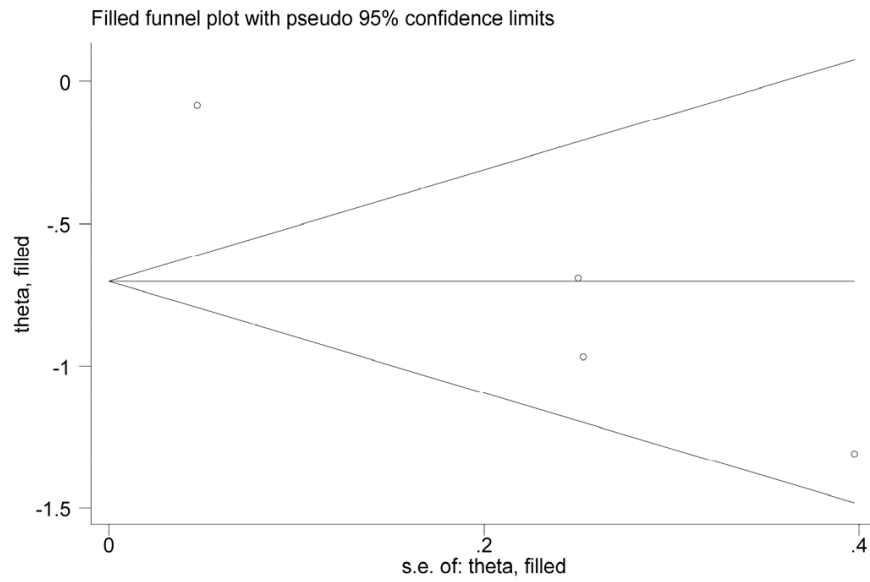


B

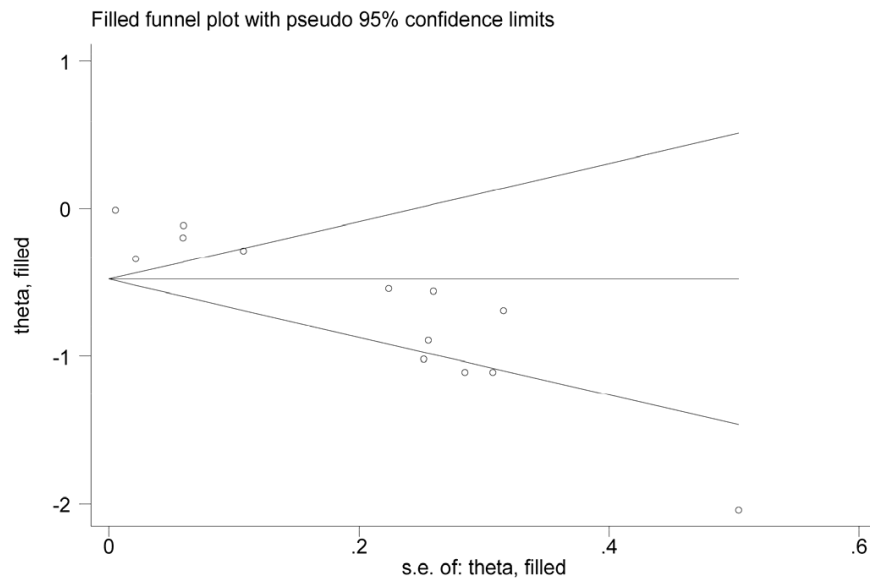


Supplementary Figure 1: One-way sensitivity analysis confirmed the effect of intraepithelial CD3⁺ TILs on PFS **A.** and OS **B.** in ovarian cancer.

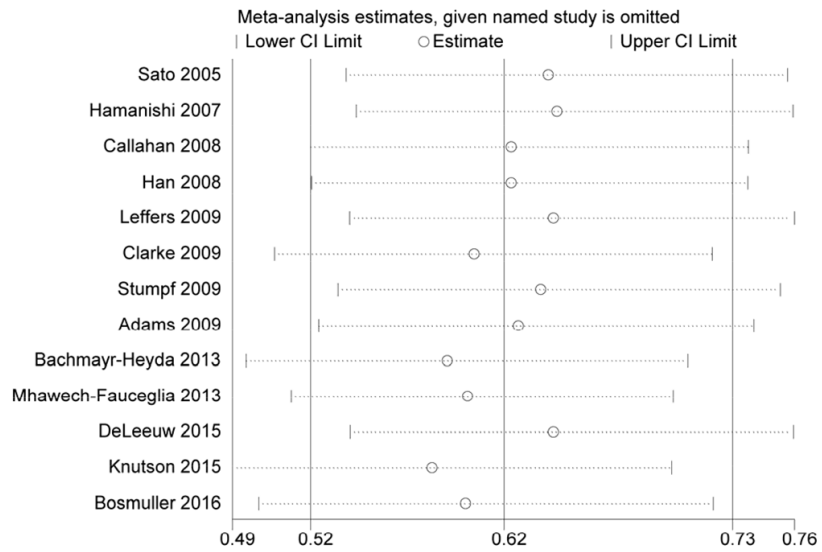
A



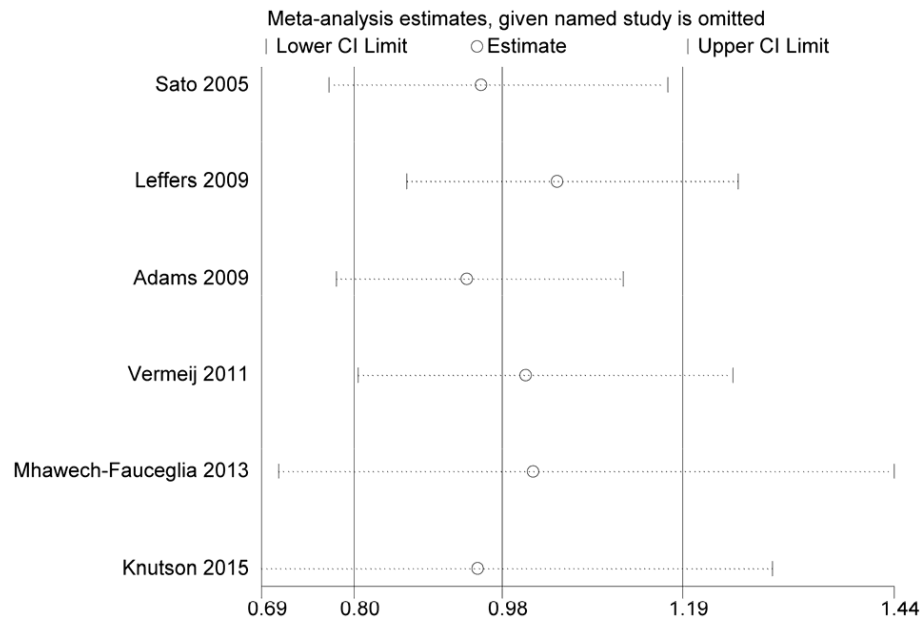
B



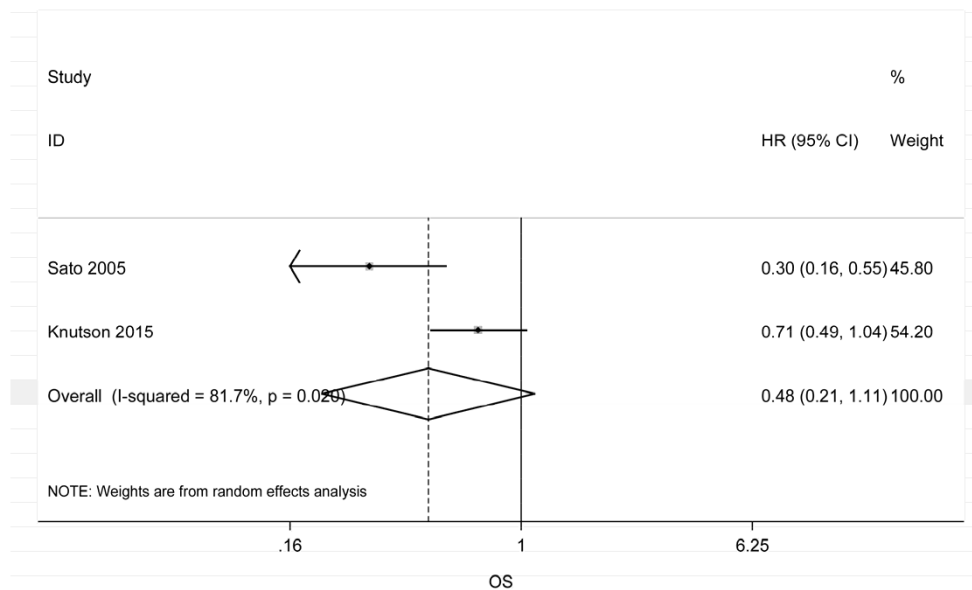
Supplementary Figure 2: The trim-and-fill analysis indicated that there might be no missing studies for both PFS A. and OS B.



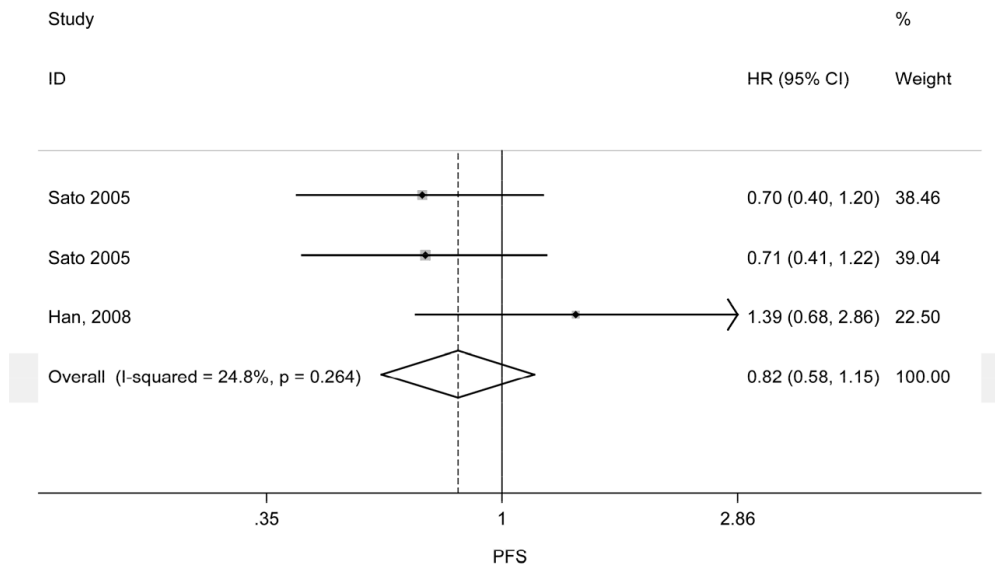
Supplementary Figure 3: One-way sensitivity analysis confirmed the effect of intraepithelial CD8⁺ TILs on OS in ovarian cancer.



Supplementary Figure 4: One-way sensitivity analysis confirmed the effect of intraepithelial FoxP3⁺ TILs on OS in ovarian cancer.



Supplementary Figure 5: Meta-analysis of the HR for OS/DSS for ovarian cancer patients depending on CD8⁺/CD4⁺ ratio status, random effects model.



Supplementary Figure 6: Meta-analysis of the HR for OS/DSS for ovarian cancer patients depending on stromal TILs status, fixed effects model.