

**The chemokine receptor CXCR4 promotes
granuloma formation by sustaining a mycobacteria-
induced angiogenesis programme**

Vincenzo Torraca, Claudia Tulotta, B. Ewa Snaar-Jagalska and Annemarie
H. Meijer*

Affiliation

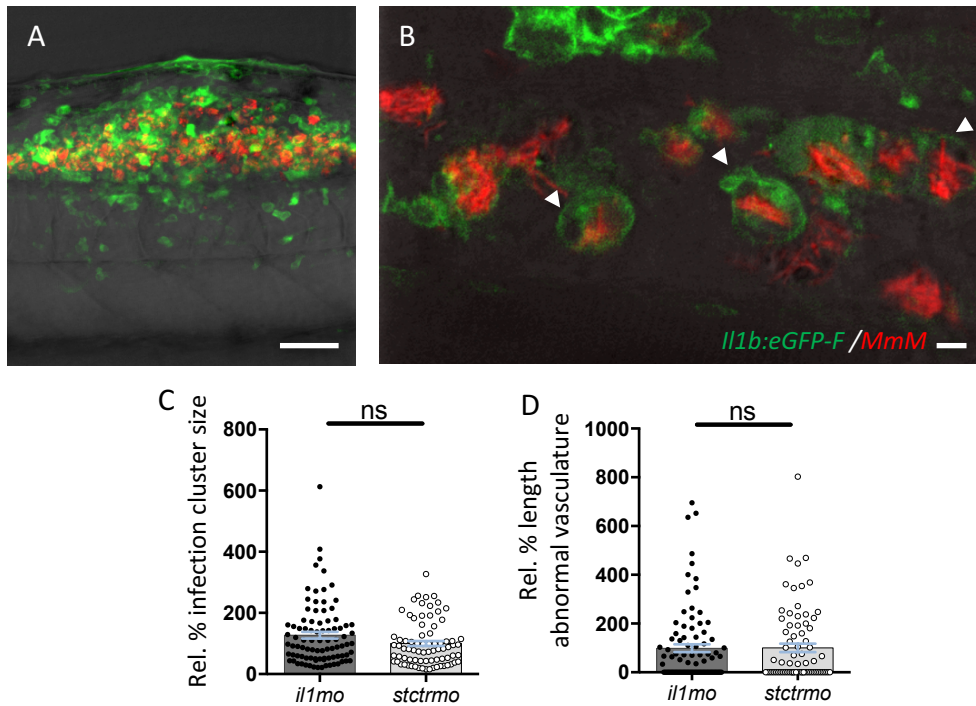
Institute of Biology, Leiden University, The Netherlands

*** Corresponding Author:**

prof. dr. Annemarie H. Meijer

e-mail: a.h.meijer@biology.leidenuniv.nl

address: Institute of Biology, Leiden University, Einsteinweg 55, 2333 CC,
Leiden, The Netherlands



Supplementary Figure S1

Supplementary Figure S1. Function of *il1b* on trunk granulomas. **A-B.** Induction of the proangiogenic inflammatory mediator *il1b* at the trunk granuloma. The large granuloma forming in the trunk contains a high number of *il1b*-expressing cells, predominantly consisting of infected cells. Confocal images were acquired at 5 dpi from infected *Tg(il1b:eGFP-F)* larvae. Scale bars: A: 50 μ m; B: 5 μ m. **C-D.** Despite being largely induced in infected cells during trunk granuloma formation, and notably suppressed by *cxc4b* mutation, depletion of *il1b* does not recapitulate *cxc4b* phenotype in granuloma vascularisation, since *il1b* morphants could still develop normally vascularise granulomas. Data were obtained and analysed as in Figure 3I-J (2 replicates, cumulated).

Supplementary Table S1. Primers used for qRT-PCR in this study.

Gene	Transcript reference	qRT-PCR Fw (5'-3')	qRT-PCR Rv (5'-3')	Ref.
<i>vegfaa</i>	ENSDART00000167719	TGCTCCTGCAAATT CACACAA	ATCTTGGCTTTT CACATCTGCAA	Li <i>et al.</i> 2012
<i>cxcr4b</i>	ENSDART00000061499	GCGACCTCTCAGT CAGCAAT	TCACAAGCACC ACAAGTCCA	-
<i>cxcl12a</i>	ENSDART00000053946	GCTGGTGCCGTTT CACAGTCA	GGGGCAGTTGG GTGTGTGGAG	-
<i>tnfa</i>	ENSDART00000025847	AGACCTTAGACTG GAGAGATGAC	CAAAGACACCT GGCTGTAGAC	Stockhammer <i>et al.</i> 2009
<i>cxcl11aa</i>	ENSDART00000169606	ACTCAACATGGTG AAGCCAGTGCT	CTTCAGCGTGGC TATGACTTCCAT	Torraca <i>et al.</i> 2015
<i>cxcl18b</i>	ENSDART00000111598	TCTTCTGCTGCTGC TTGCGGT	GGTGTCCCTGCG AGCACGAT	Van der Vaart <i>et al.</i> 2013
<i>il1b</i>	ENSDART00000169225	GAACAGAATGAAG CACATCAAACC	ACGGCACTGAAT CCACCAC	Stockhammer <i>et al.</i> 2009
<i>mmp9</i>	ENSDART00000062845	CATTAAAGATGCCC TGATGTATCCC	AGTGGTGGTCCG TGGTTGAG	Stockhammer <i>et al.</i> 2009
<i>ppiab</i>	ENSDART00000166085	AACTGAAACACG GAGGCAAAG	CATCCACAACCT TCCCGAACAC	Stockhammer <i>et al.</i> 2009
<i>eif4a1b</i>	ENSDART00000140602 ENSDART00000011878	TTCAGAACTCAG TACTAGCATACA	GTGACATCCAAC ACCTCTGC	Benard <i>et al.</i> 2015