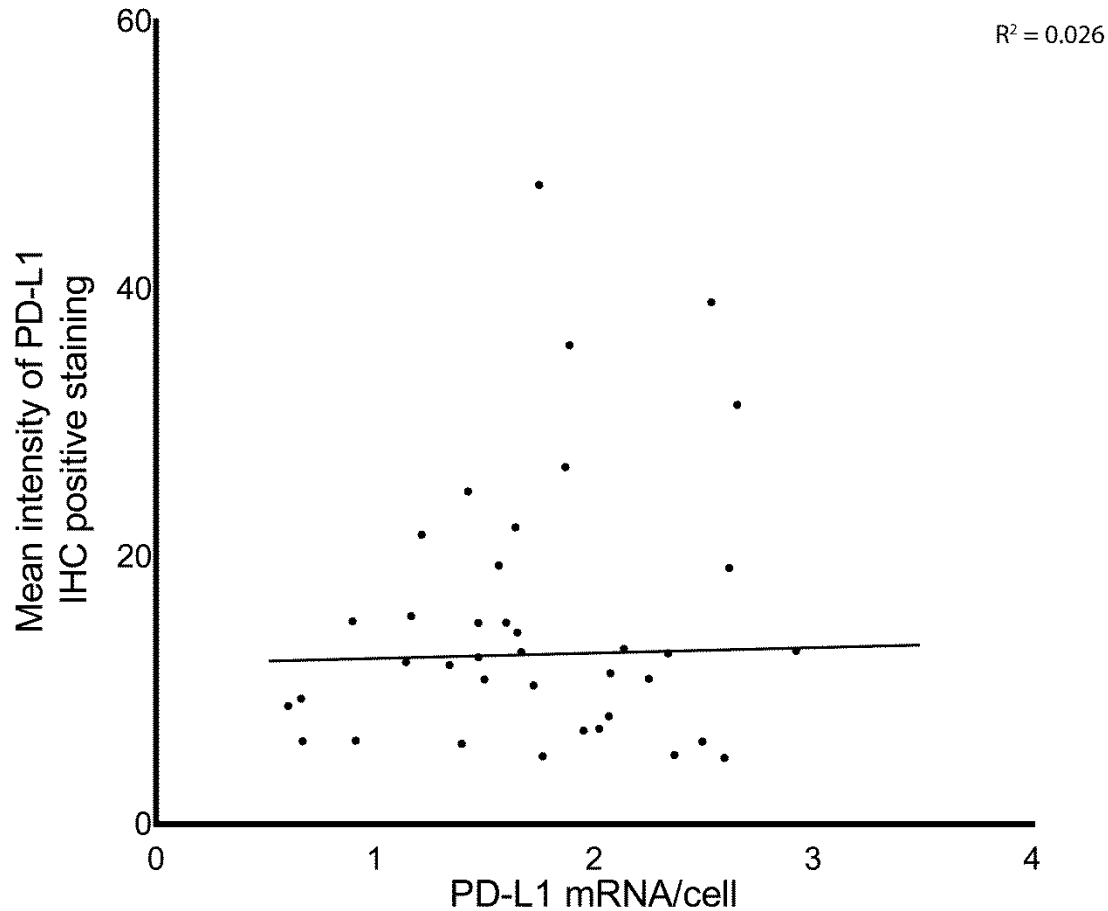
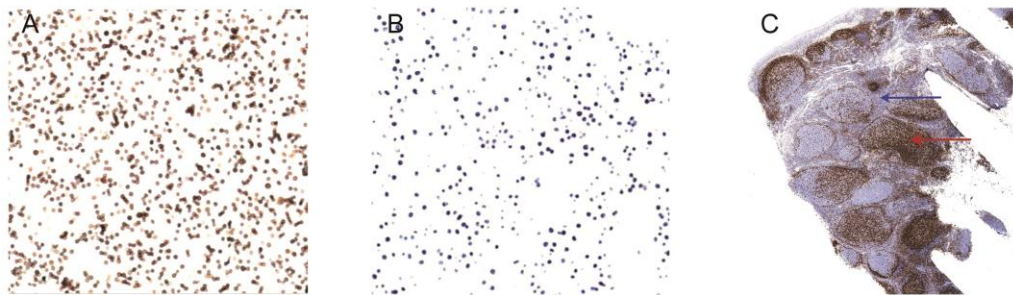


## Increased expression of programmed death ligand 1 (PD-L1) in human pituitary tumors

### Supplementary Material



**Supplementary Figure 1.** Comparison of PD-L1 mRNA and protein expression across pituitary adenomas. Sample level PD-L1 mRNA levels (x-axis) did not correlate with protein levels (y-axis) in this study cohort.



**Supplementary Figure 2. PD-L1 and PD-1 immunohistochemistry staining controls.** Murine B cells (A) with and (B) without transfection of the human PD-L1 gene were stained with the PD-L1 antibody and served as a positive and negative control, respectively, for immunohistochemistry (4X magnification; C).

DAB staining for PD-L1 with hematoxylin counterstain for background cells). (C) Human tonsil tissue was stained for PD-1 protein, with expected positive expression (red arrow) in germinal centers and negative expression outside of the germinal center (blue arrow).