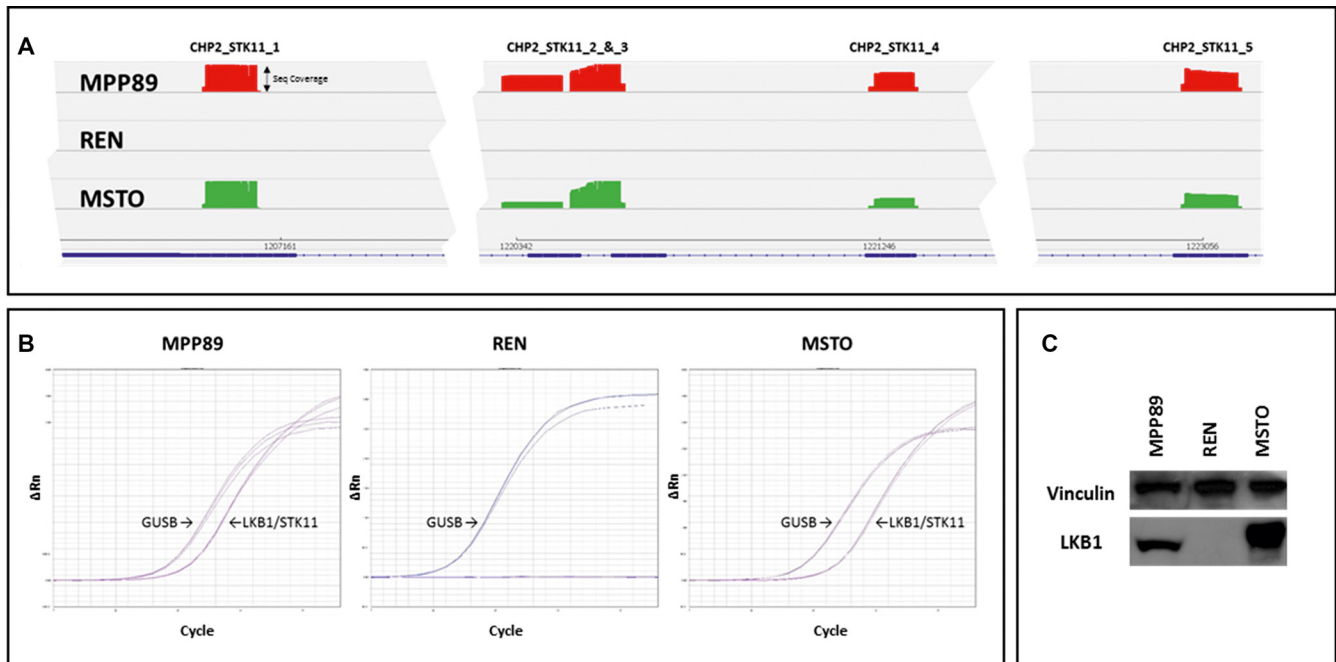


Dasatinib modulates sensitivity to pemetrexed in malignant pleural mesothelioma cell lines

Supplementary Materials



Supplementary Figure S1: LKB1/STK11 expression in MPM cells. Next generation sequencing (NGS) characterized LKB1/STK11 status in all MPM cells (A): all five amplicons included in CHP2 panel were amplified in both MPP89 (first line) and MSTO (third line), while no detection was available in REN cells (middle line). Real-time PCR (B) and western blotting (C) show LKB1/STK11 gene and protein expression, respectively, confirming the complete absence of LKB1/STK11 in REN cells.