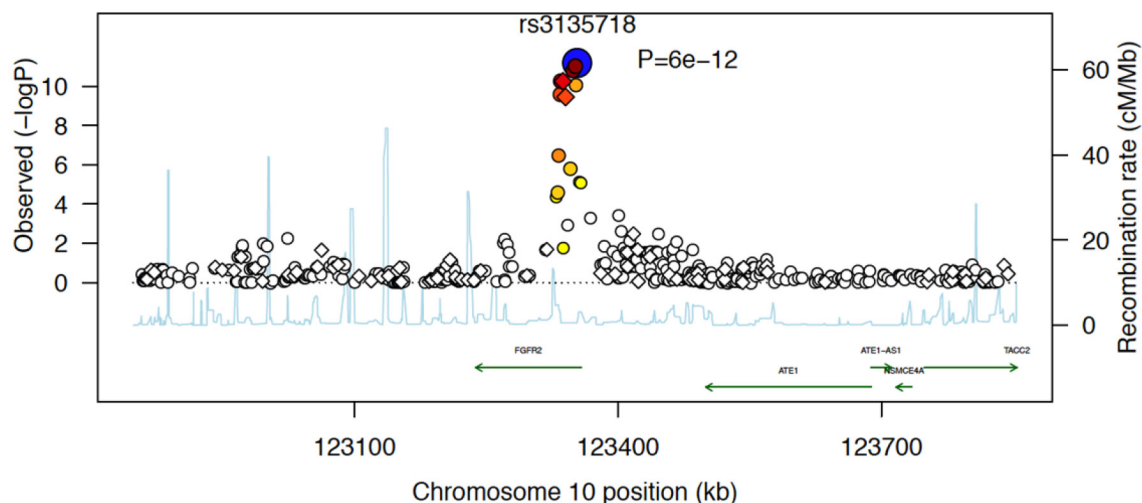
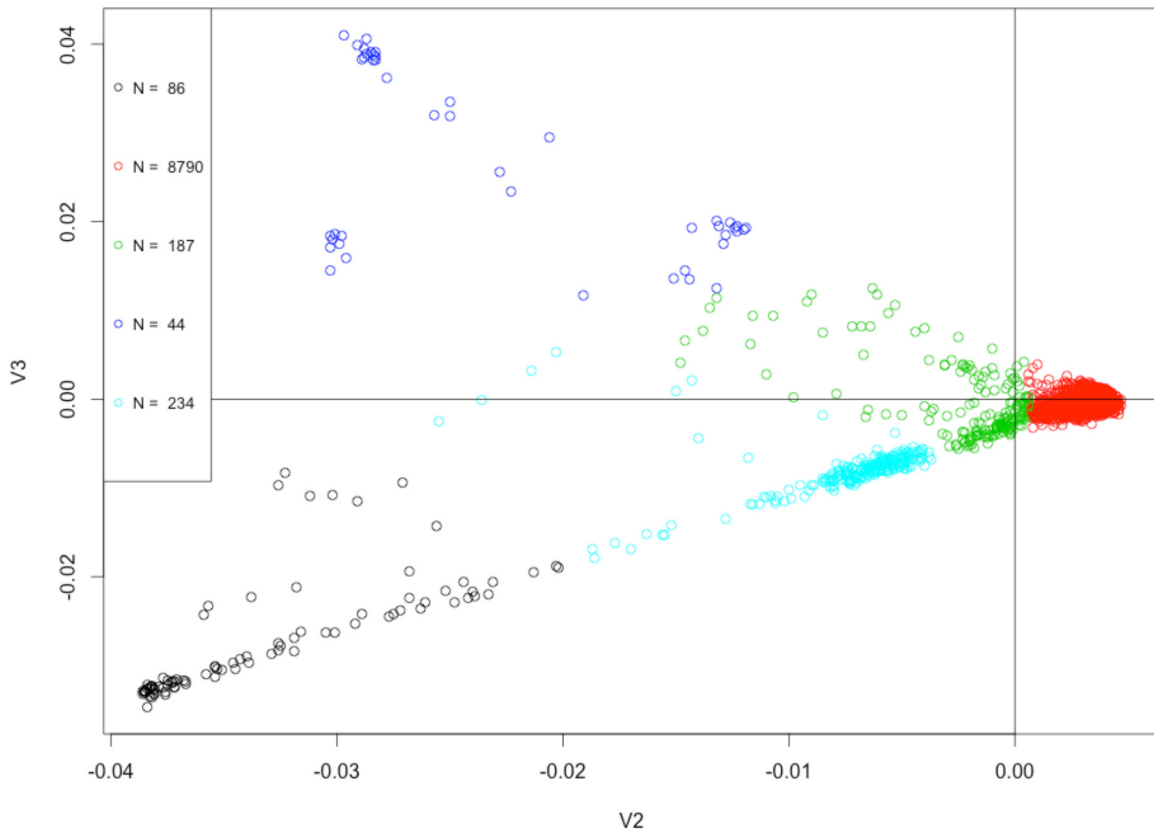


GWAS in the SIGNAL/PHARE clinical cohort restricts the association between the *FGFR2* locus and estrogen receptor status to HER2-negative breast cancer patients

SUPPLEMENTARY FIGURES



Supplementary Figure S1: Locuszoom plot of chromosome 10 around the *FGFR2* locus. Circles represent imputed SNPs, diamonds represent genotyped SNPs. Observed p-value is plotted along the left Y axis, recombination rate along the right Y axis. Shading from purple to yellow in filled shapes represents linkage disequilibrium with the highlighted SNP, in this case is rs3135718.



Supplementary Figure S2: Principal components and K-means analyses of genotyping data from the HumanCore Exome data in the combined SIGNAL/PHARE cohorts.