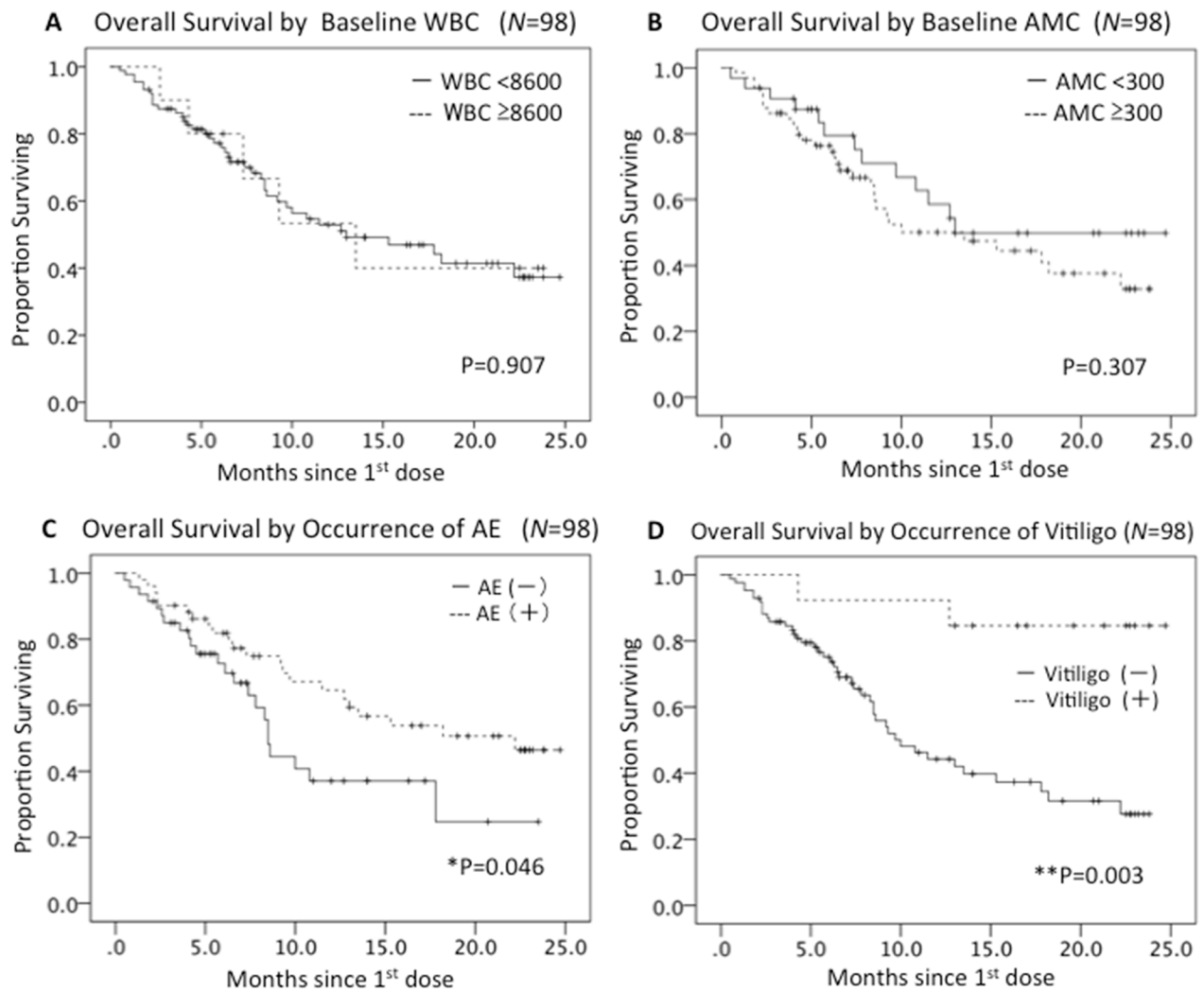
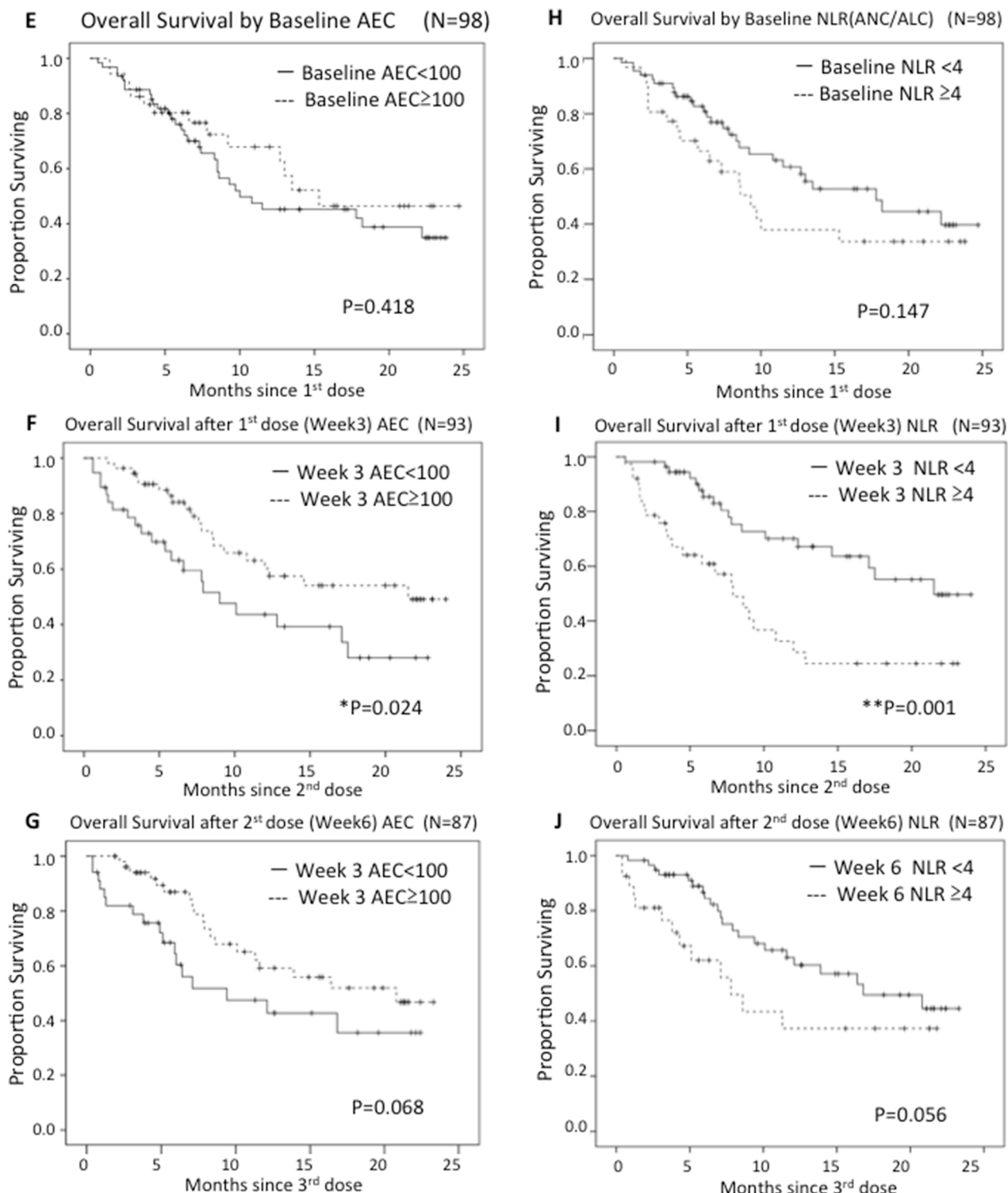


Nivolumab for advanced melanoma: pretreatment prognostic factors and early outcome markers during therapy

SUPPLEMENTARY FIGURE



(Continued)



Supplementary Figure S1: Kaplan-Meier curves in terms of OS by each prognostic factor. Baseline WBC **A.**, AMC **B.**, AEC **E.**, and NLR **H.** were not associated with OS, significantly. Occurrence of AE **C.** especially vitiligo **D.** was significantly associated with better OS. AEC ≥ 100/μl **F.** and NLR < 4 **I.** at Week 3 were associated with better OS significantly, while there was no significant difference at Week 6 **G.**, **J.**