

Additional file 2

Data of CTV and iCTV

Table e1. The volumes, overall standard deviations and conformity indexes of all 4 patients

Patient		CTV (range*)	iCTV (range*)
1	Average volume (cm ³)	79.21 (36.04–145.96)	89.15 (31.70–165.48)
	Overall SD (cm)	0.75 (0.60–0.77)	0.82 (0.69–0.85)
	Cl _{gen}	0.43 (0.41–0.46)	0.38 (0.35–0.41)
2	Average volume (cm ³)	52.99 (24.97–106.90)	53.05 (16.59–131.79)
	Overall SD (cm)	0.90 (0.80–0.95)	1.05 (0.39–1.05)
	Cl _{gen}	0.32 (0.29–0.37)	0.30 (0.27–0.34)
3	Average volume (cm ³)	28.66 (11.85–46.76)	68.26 (19.36–169.21)
	Overall SD (cm)	0.52 (0.45–0.55)	0.99 (0.88–1.04)
	Cl _{gen}	0.46 (0.43–0.50)	0.23 (0.19–0.26)
4	Average volume (cm ³)	103.86 (75.13–147.46)	126.75 (49.2–204.04)
	Overall SD (cm)	0.44 (0.39–0.46)	0.72 (0.62–0.74)
	Cl _{gen}	0.65 (0.63–0.67)	0.50 (0.47–0.54)
Overall for all patients	Average volume (cm ³)	66.18	84.30‡ (<i>P</i> =0.045)
	Overall SD (cm) [§]	0.68	0.91
	Cl _{gen}	0.46	0.35

Abbreviations: CTV, clinical target volume; iCTV, internal clinical target volume; SD, standard deviation; Cl_{gen}, generalized conformity index.

* Range over 8 delineation (average volume) or results of leave-one-out analysis (overall SD and Cl_{gen}).

† Note that the overall SD was calculated as the root-mean-square of the four SDs from the four patients

‡Two-sided Wilcoxon signed-rank test

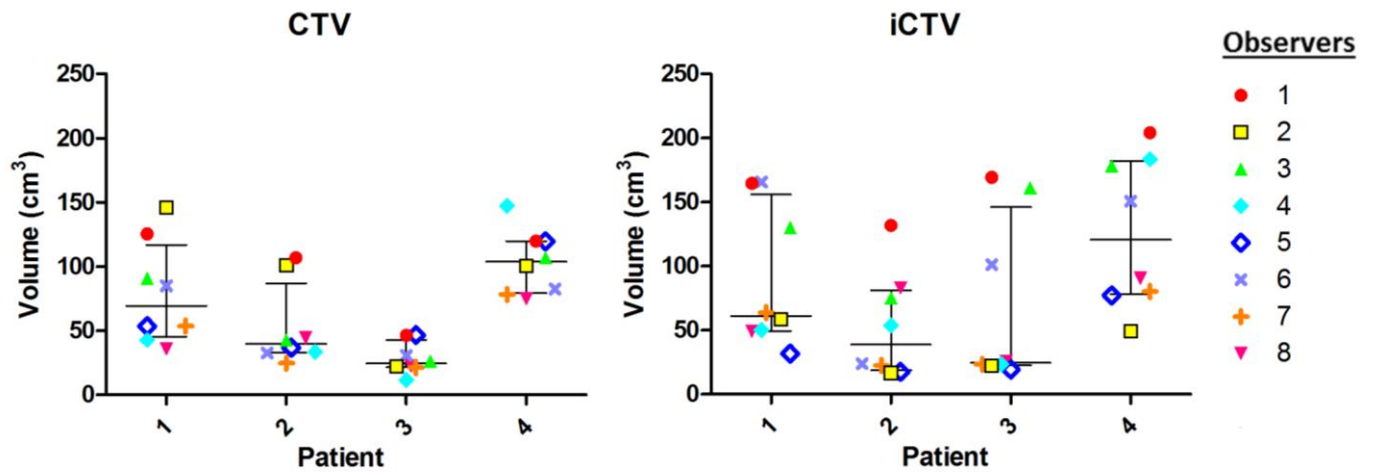


Fig. e1: Scatterplots of CTV (left) and iCTV (right) of all four patients with the median, 25th and 75th percentile represented by the horizontal lines. Colors are related to observers and are similar for Fig. 3 in the paper.