

Figure S2

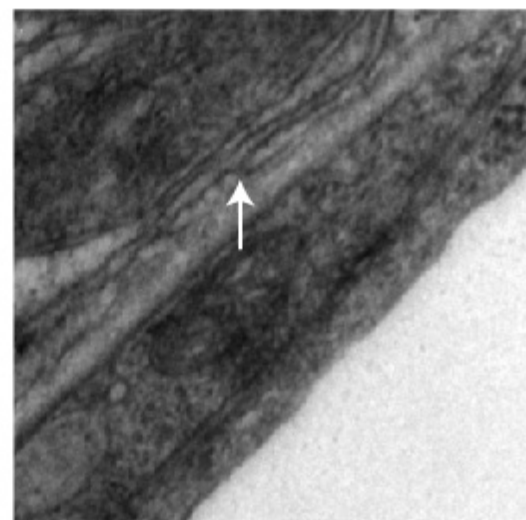
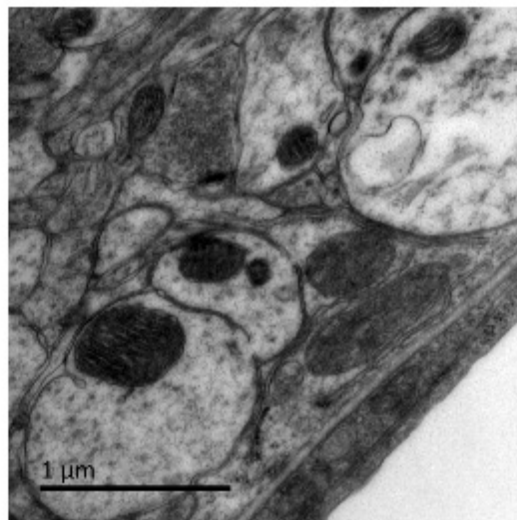
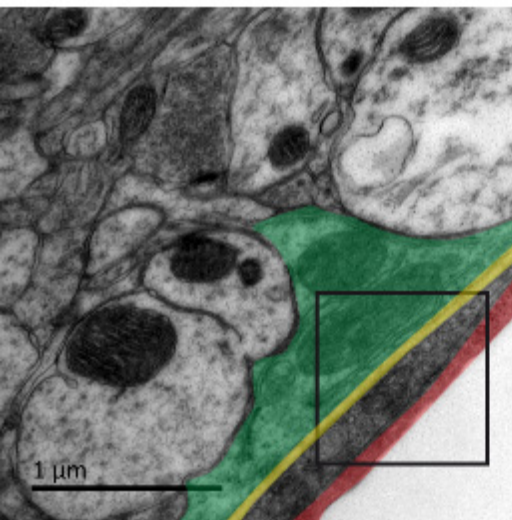


Figure S2 Contact sites between endoplasmic reticulum and plasma membrane in astrocyte endfeet. Representative transmission electron microscopy image of a contact site between endoplasmic reticulum and the astrocyte endfoot plasma membrane. Enlarged view of the squared area shows details of the contact site indicated by the white arrow. On the left image, the different structures of the gliovascular unit are colored: an astrocyte endfoot (green), the basal lamina (yellow), an endothelial cell (red).