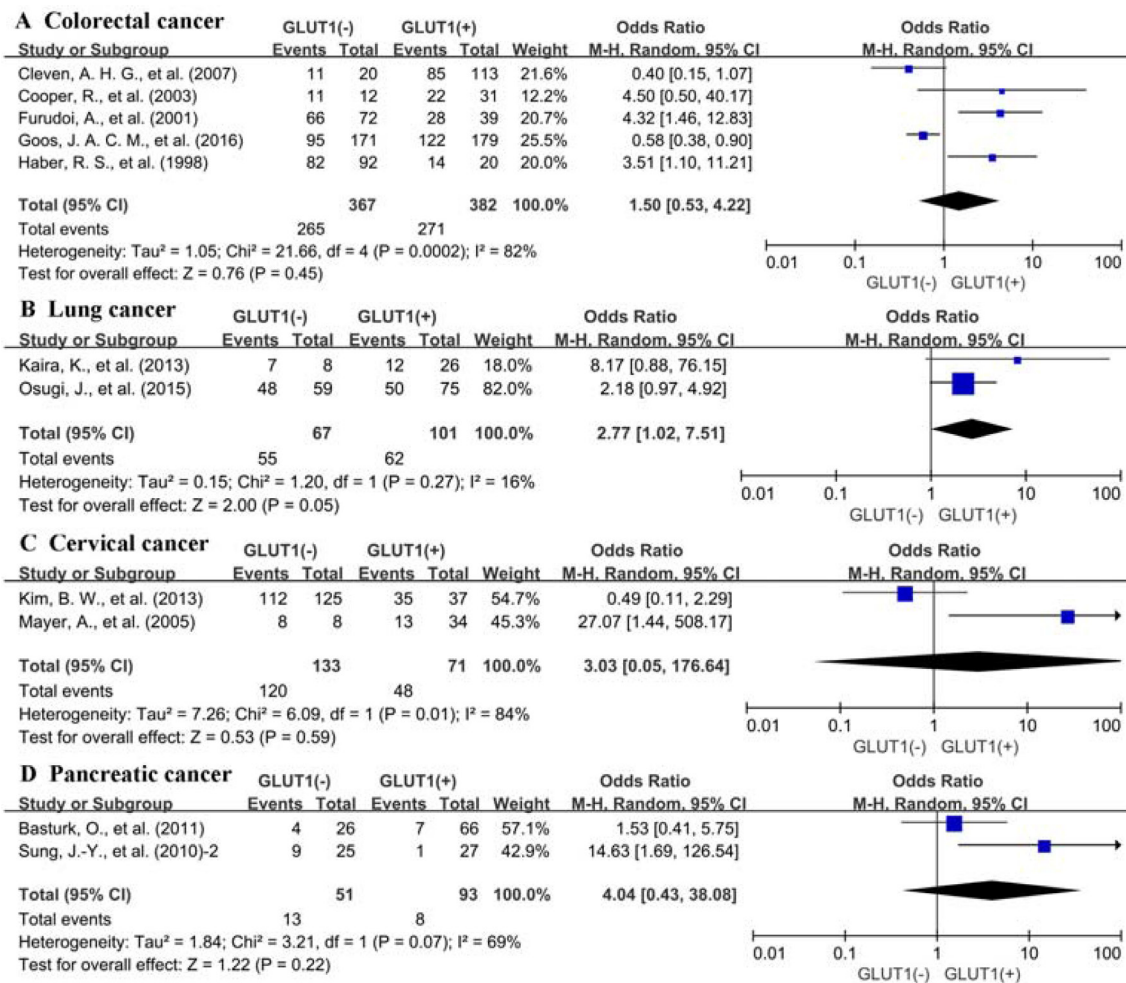
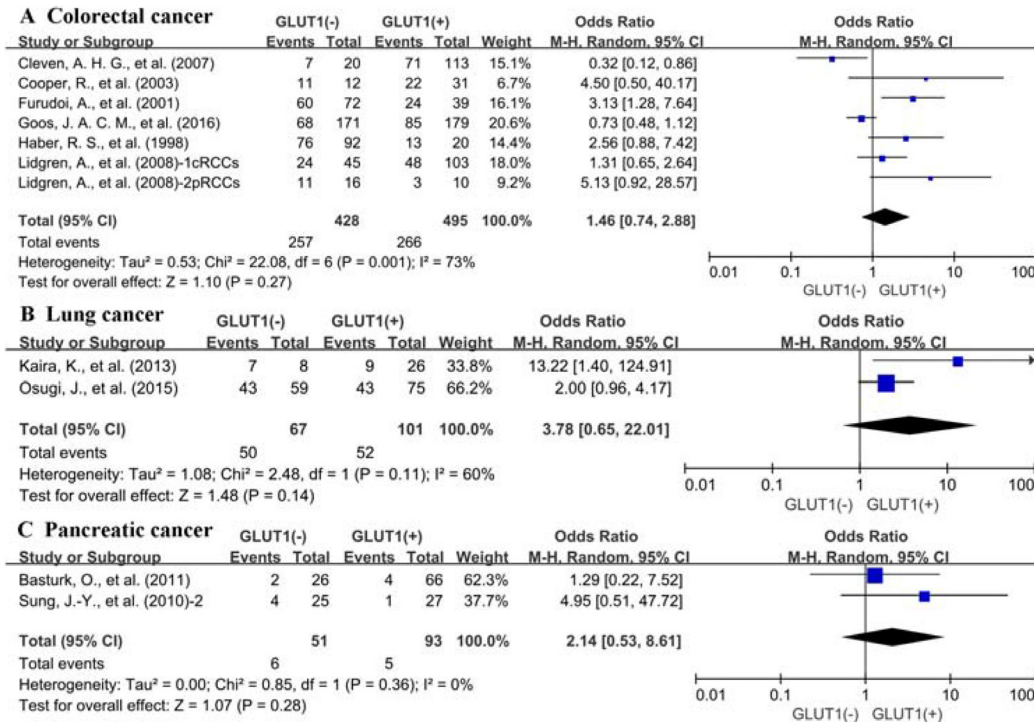


# Glucose transporter GLUT1 expression and clinical outcome in solid tumors: a systematic review and meta-analysis

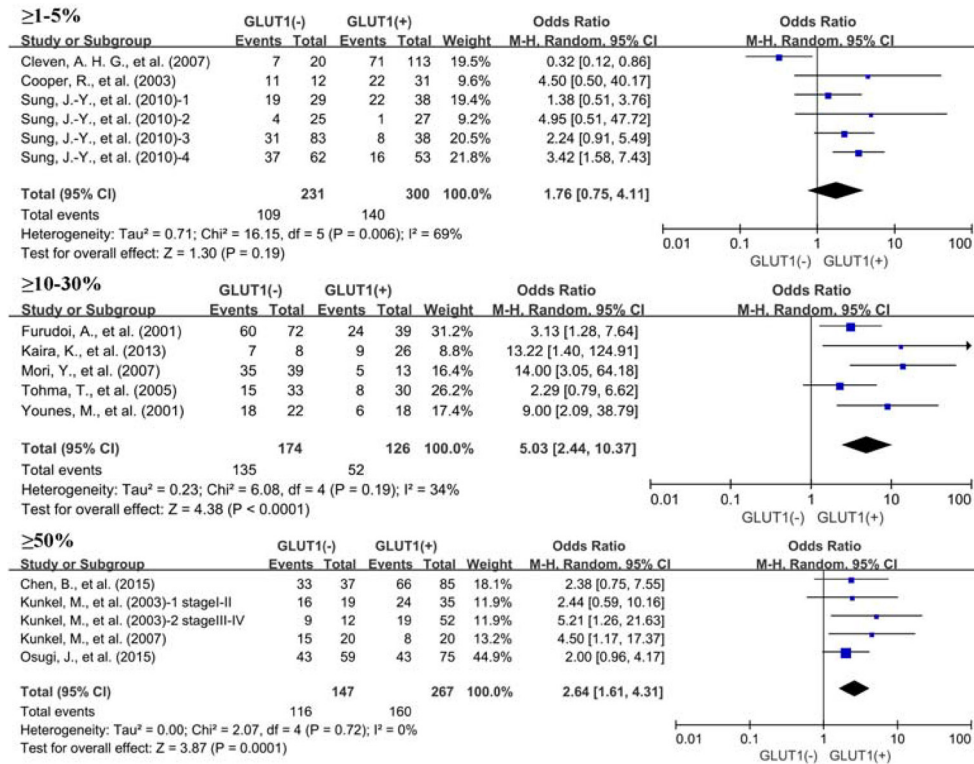
## Supplementary Materials



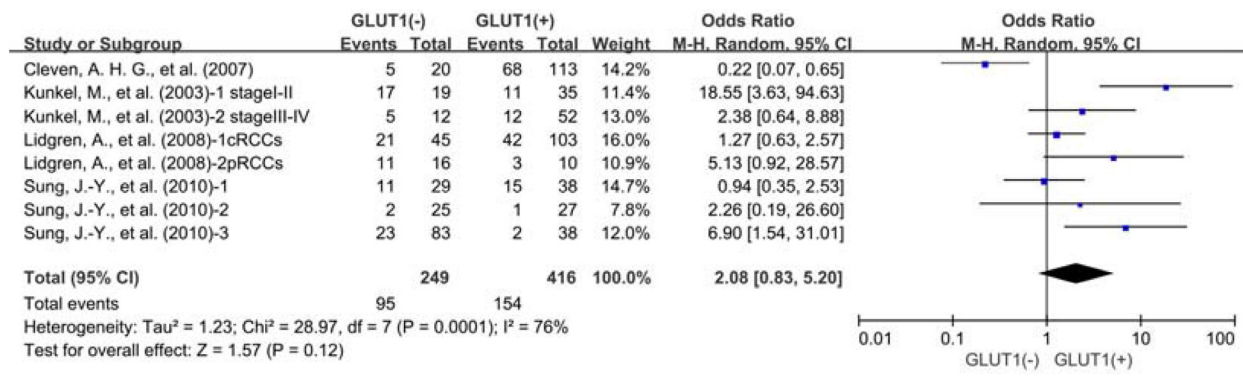
Supplementary Figure 1: Subgroup analysis of 3-year OS by GLUT1 expression in different tumor types. (A) colorectal cancer; (B) lung cancer; (C) cervical cancer; (D) pancreatic cancer.



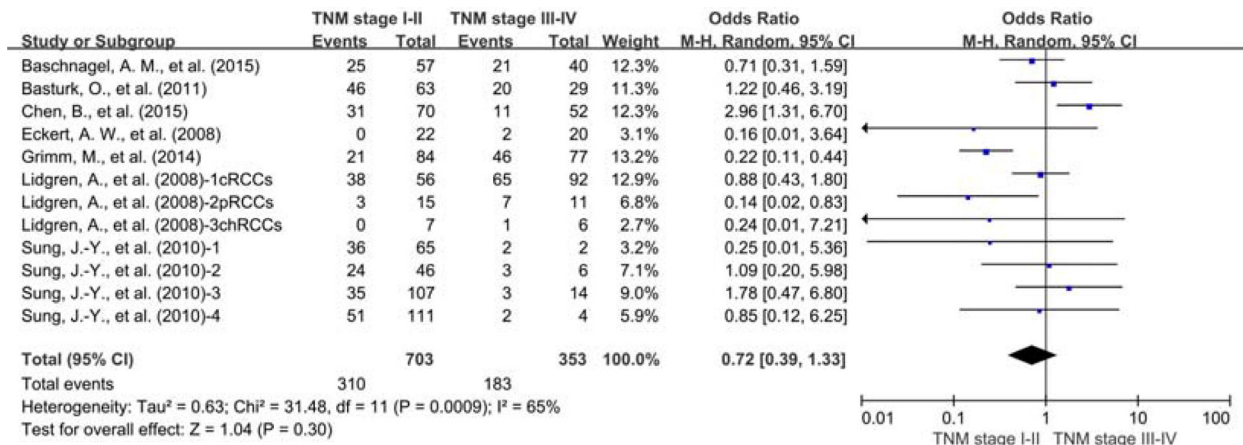
Supplementary Figure 2: Subgroup analysis of 5-year OS by GLUT1 expression in different tumor types. (A) colorectal cancer; (B) lung cancer; (C) pancreatic cancer.



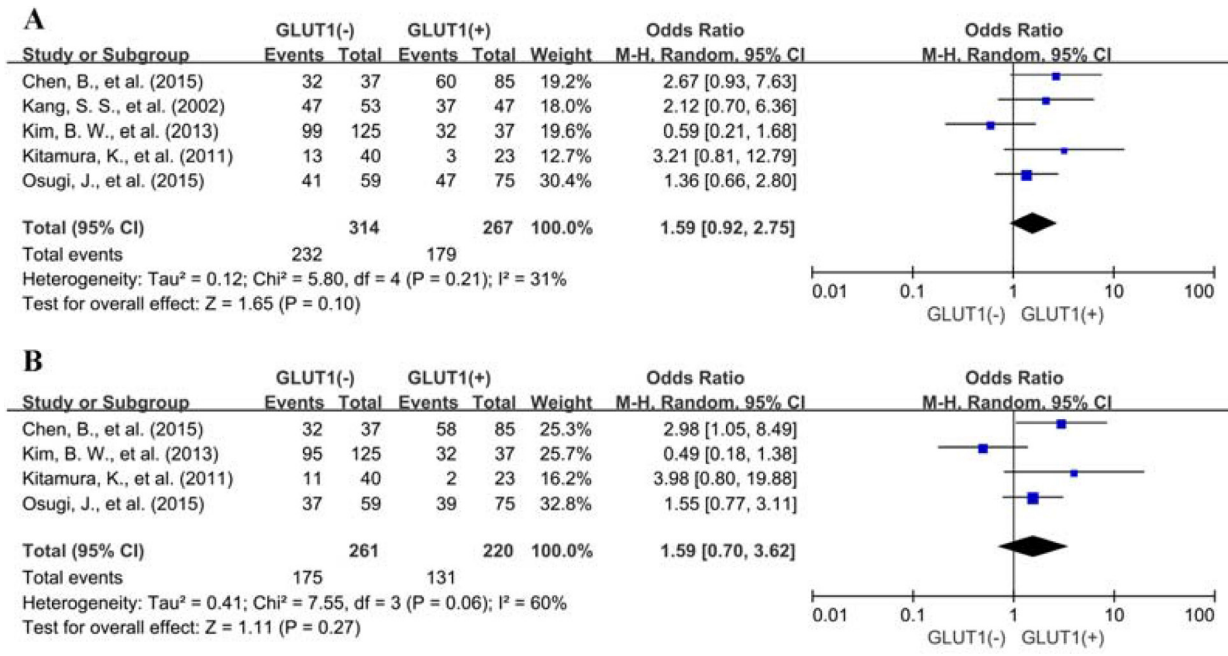
Supplementary Figure 3: Subgroup analysis of the correlation between GLUT1 overexpression and 5-year OS of solid tumors according to cut-off values determining GLUT1 positivity.



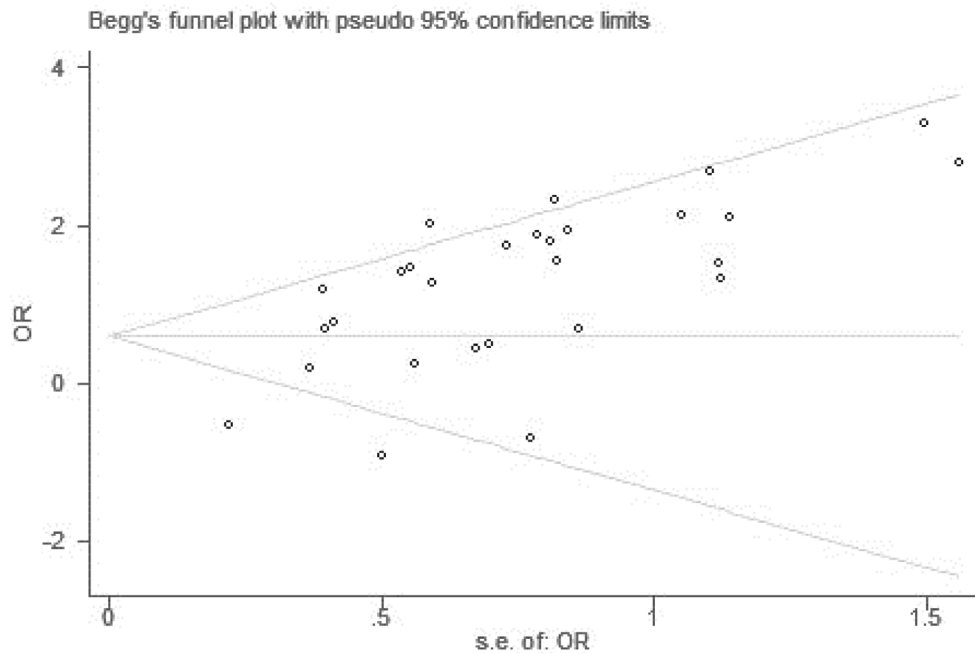
Supplementary Figure 4: 10-year OS by GLUT1 expression.



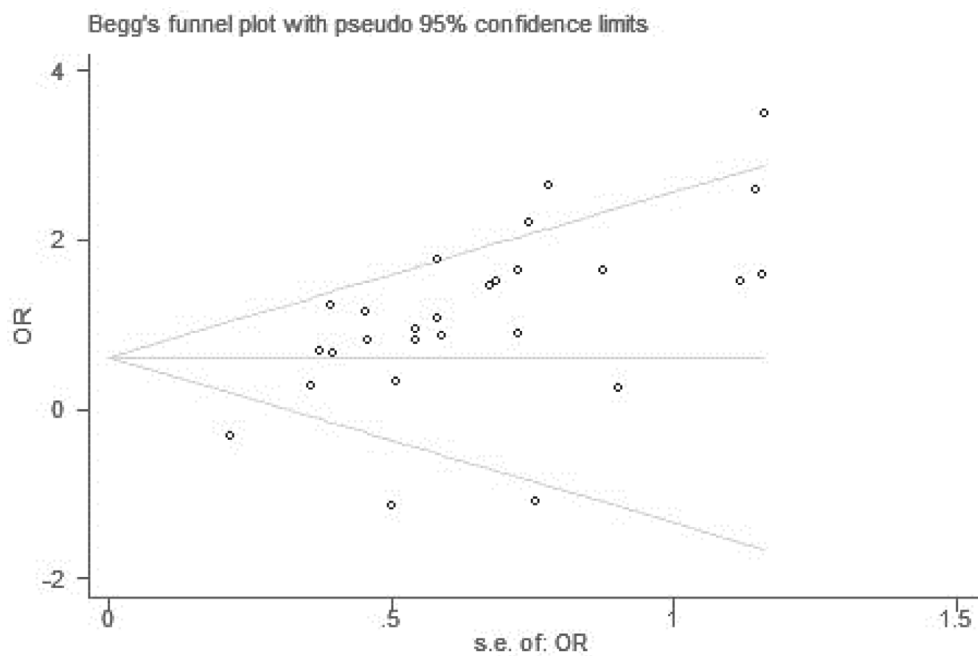
Supplementary Figure 5: Subgroup analysis of the correlation between GLUT1 expression and tumor stage.



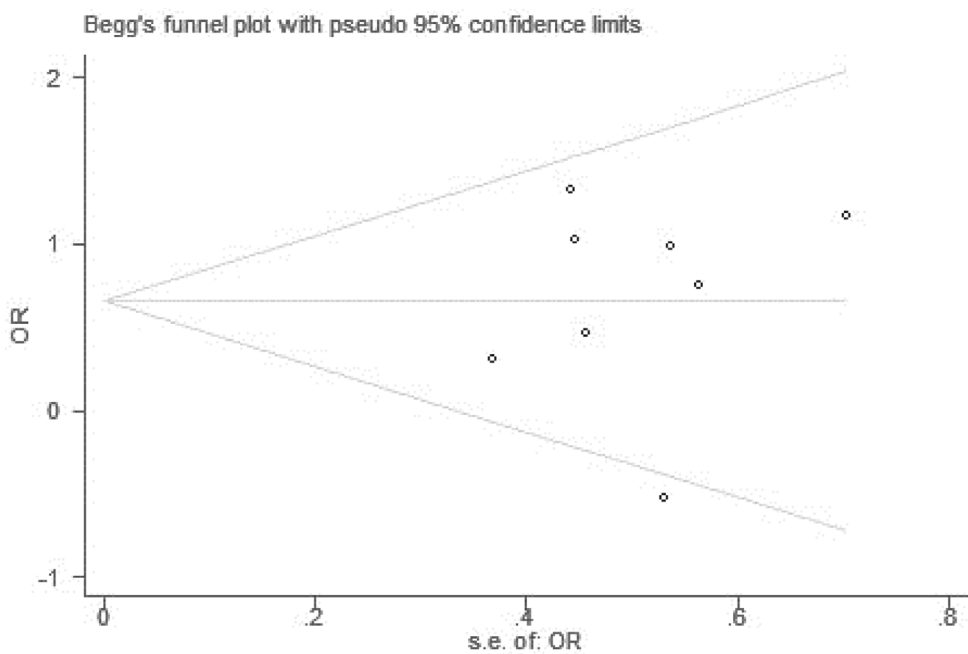
**Supplementary Figure 6: Subgroup analysis of association between GLUT1 overexpression and 3-year DFS. (A) and 5-year DFS (B) in Asian countries.**



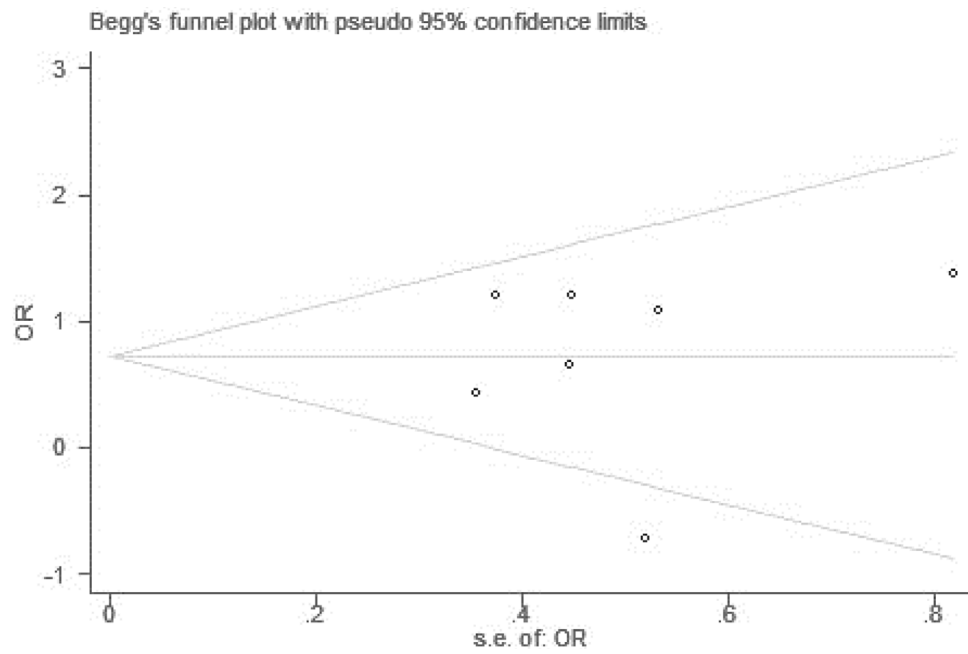
**Supplementary Figure 7: Assessment of publication bias using Begg's funnel plot analysis of studies on 3-year OS.**



Supplementary Figure 8: Assessment of publication bias using Begg's funnel plot analysis of studies on 5-year OS.



Supplementary Figure 9: Assessment of publication bias using Begg's funnel plot analysis of studies on 3-year DFS.



Supplementary Figure 10: Assessment of publication bias using Begg's funnel plot analysis of studies on 5-year DFS.