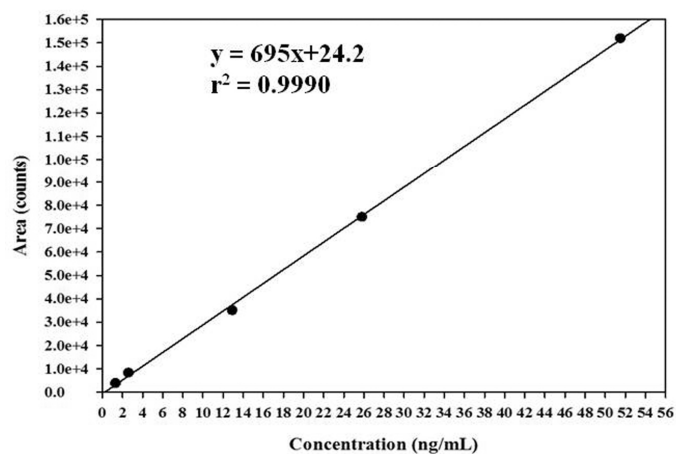


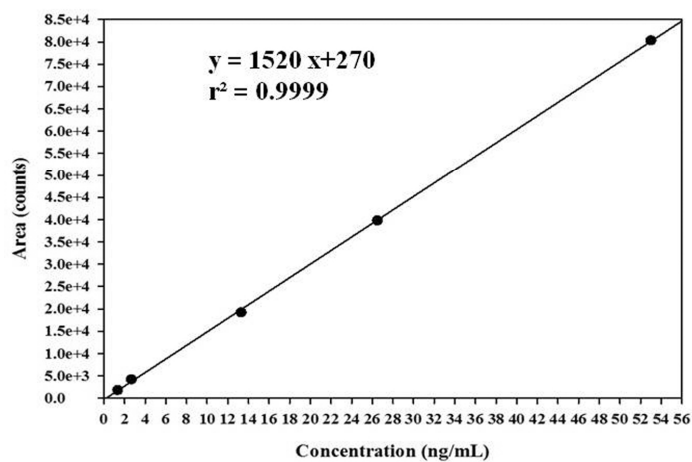
Supplementary Materials: Simultaneous Determination of Multi-Mycotoxins in Cereal Grains Collected from South Korea by LC/MS/MS

Dong-Ho Kim, Sung-Yong Hong, Jea Woo Kang, Sung Min Cho, Kyu Ri Lee, Tae Kyung An, Chan Lee and Soo Hyun Chung

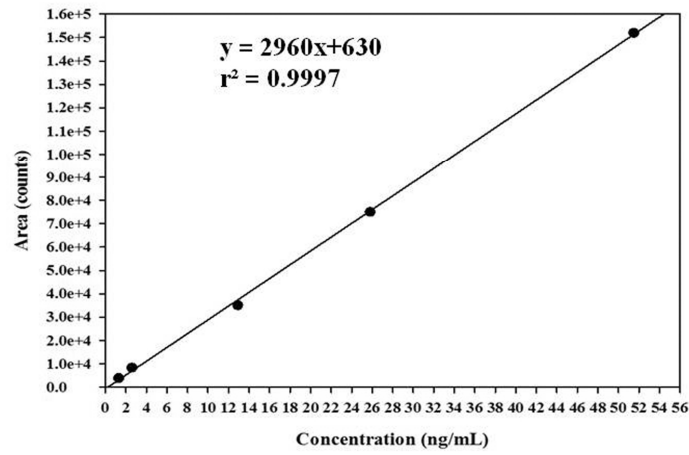
(A)



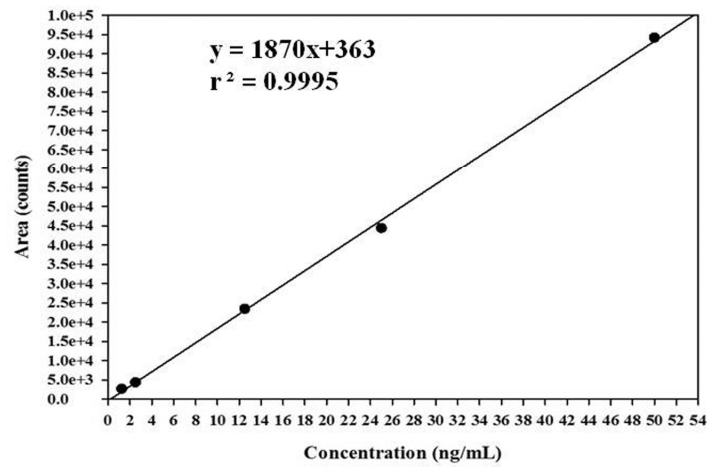
(B)



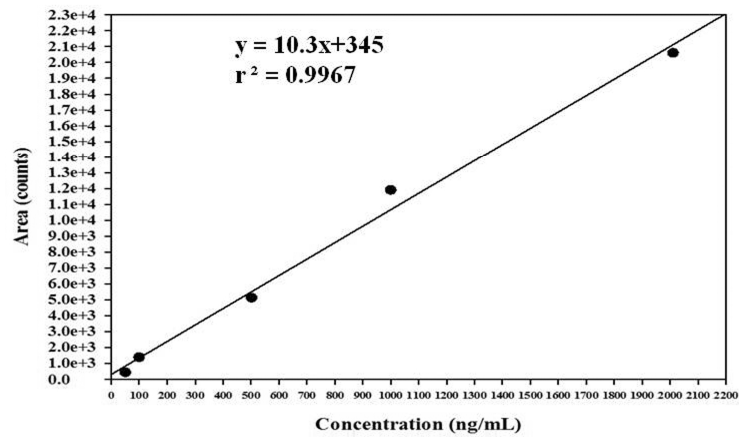
(C)



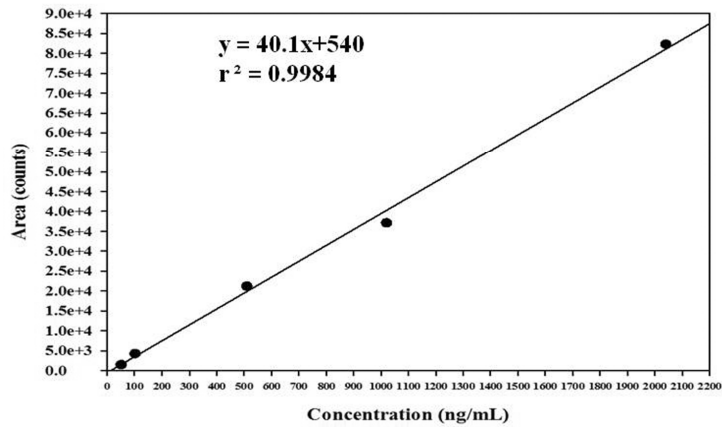
(D)



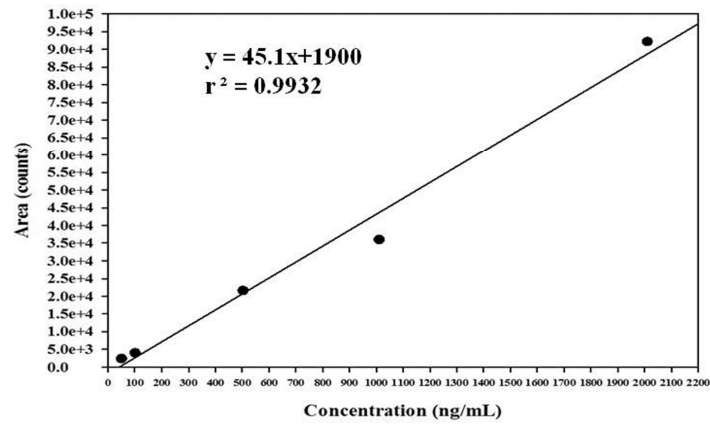
(E)



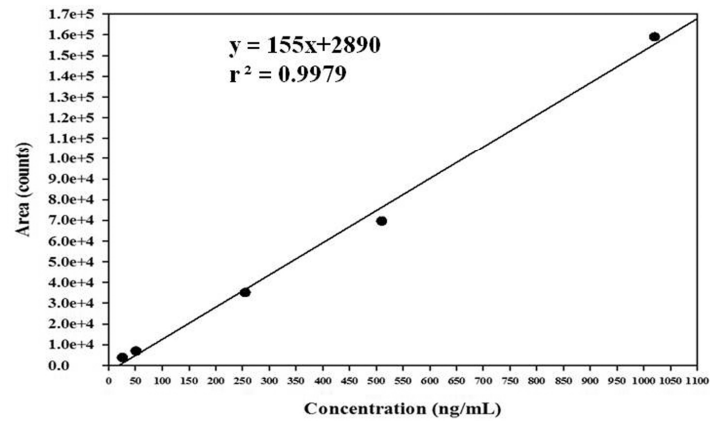
(F)



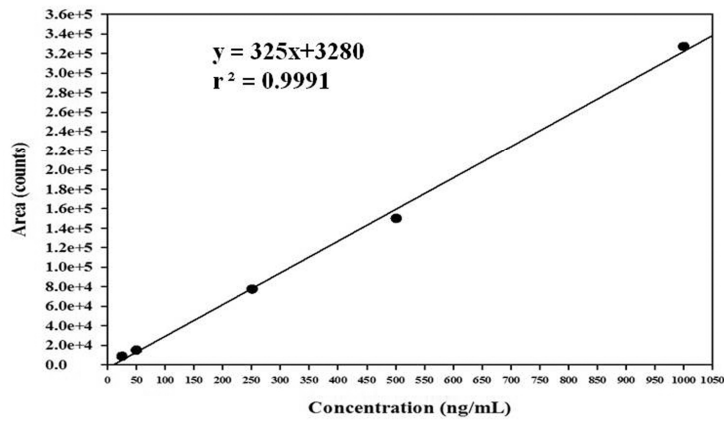
(G)



(H)

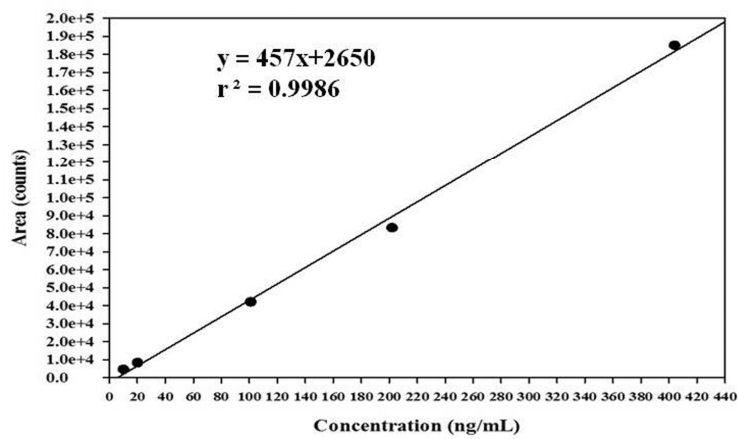


(I)

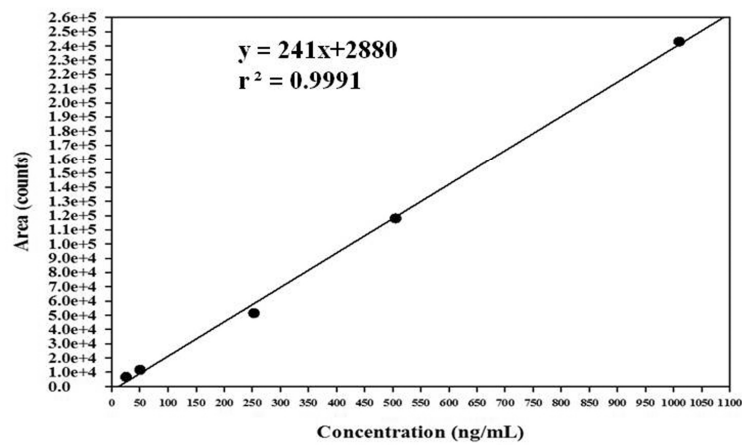


(i)

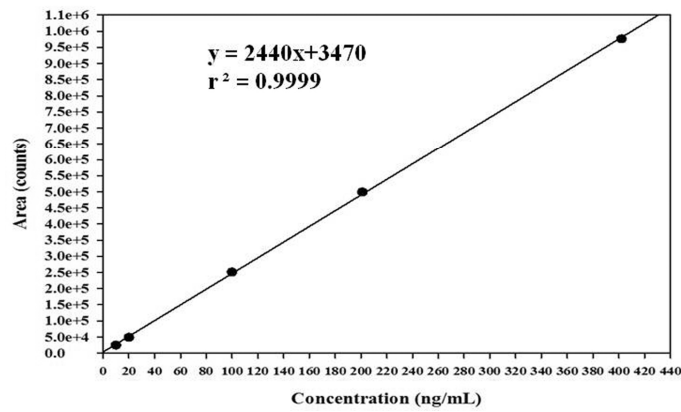
(J)



(K)



(L)



(M)

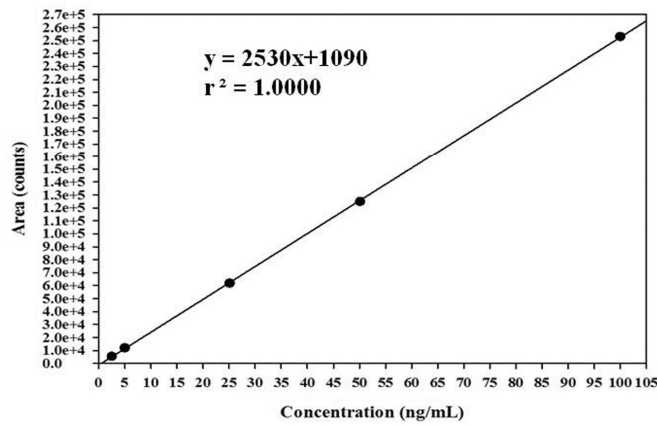


Figure S1. Calibration curves of 13 mycotoxins. A series of standard solutions for each toxin were prepared in the range of 1.325, 2.65, 13.25, 26.5, and 53 ng/mL. The standard solutions for each toxin were injected into LC/MS/MS in triplicate. Calibration curves of (A) AFB₁ (B) AFB₂ (C) AFG₁ (D) AFG₂ (E) NIV (F) DON (G) 3-AcDON (H) FB₁ (I) FB₂ (J) T-2 (K) HT-2 (L) ZEN (M) OTA are shown.

Table S1. LODs and LOQs of 13 mycotoxins in 5 types of cereal grains.

Cereal grain	Toxin	LOD (S/N=3, ng/g)	LOQ (S/N=10, ng/g)	Toxin	LOD (S/N=3, ng/g)	LOQ (S/N=10, ng/g)
Brown rice		14.9	45.1		6.0	18.3
Millet		15.2	46.1		12.1	36.7
Sorghum	NIV	18.1	54.8	DON	17.7	53.6
Maize		12.4	37.6		17.0	51.4
Mixed cereal		13.8	41.8		12.6	38.2
Brown rice		2.5	7.6		0.4	1.3
Millet		4.8	14.5		0.7	2.0
Sorghum	3-AcDON	4.5	13.6	ZEN	0.5	1.5
Maize		4.7	14.2		0.8	2.5
Mixed cereal		4.7	4.7		0.2	0.6
Brown rice		0.3	0.8		0.1	0.4
Millet		0.4	1.1		0.3	0.8
Sorghum	AFB ₁	0.7	2.2	AFB ₂	0.4	1.1
Maize		0.7	2.1		0.5	1.4
Mixed cereal		0.4	1.2		0.2	1.0
Brown rice		1.1	3.4		0.1	0.4
Millet		1.0	3.0		0.3	0.9
Sorghum	AFG ₁	1.6	4.8	AFG ₂	0.5	1.4
Maize		0.8	2.3		0.6	1.9
Mixed cereal		0.1	0.4		0.3	1.0
Brown rice		0.8	2.3		0.7	2.2
Millet		1.8	5.4		1.4	4.4
Sorghum	FB ₁	1.5	4.4	FB ₂	3.5	10.6
Maize		2.4	7.3		1.9	5.9
Mixed cereal		0.9	2.6		1.7	5.3
Brown rice		12.6	38.3		1.9	5.8
Millet		15.3	46.4		2.5	7.5
Sorghum	HT-2	15.3	46.4	T-2	4.0	12.0
Maize		11.6	35.1		6.3	19.2
Mixed cereal		4.0	12.2		3.1	9.3
Brown rice		0.6	1.9			
Millet		2.3	7.0			
Sorghum	OTA	2.3	7.0			
Maize		1.8	5.4			
Mixed cereal		0.4	1.4			