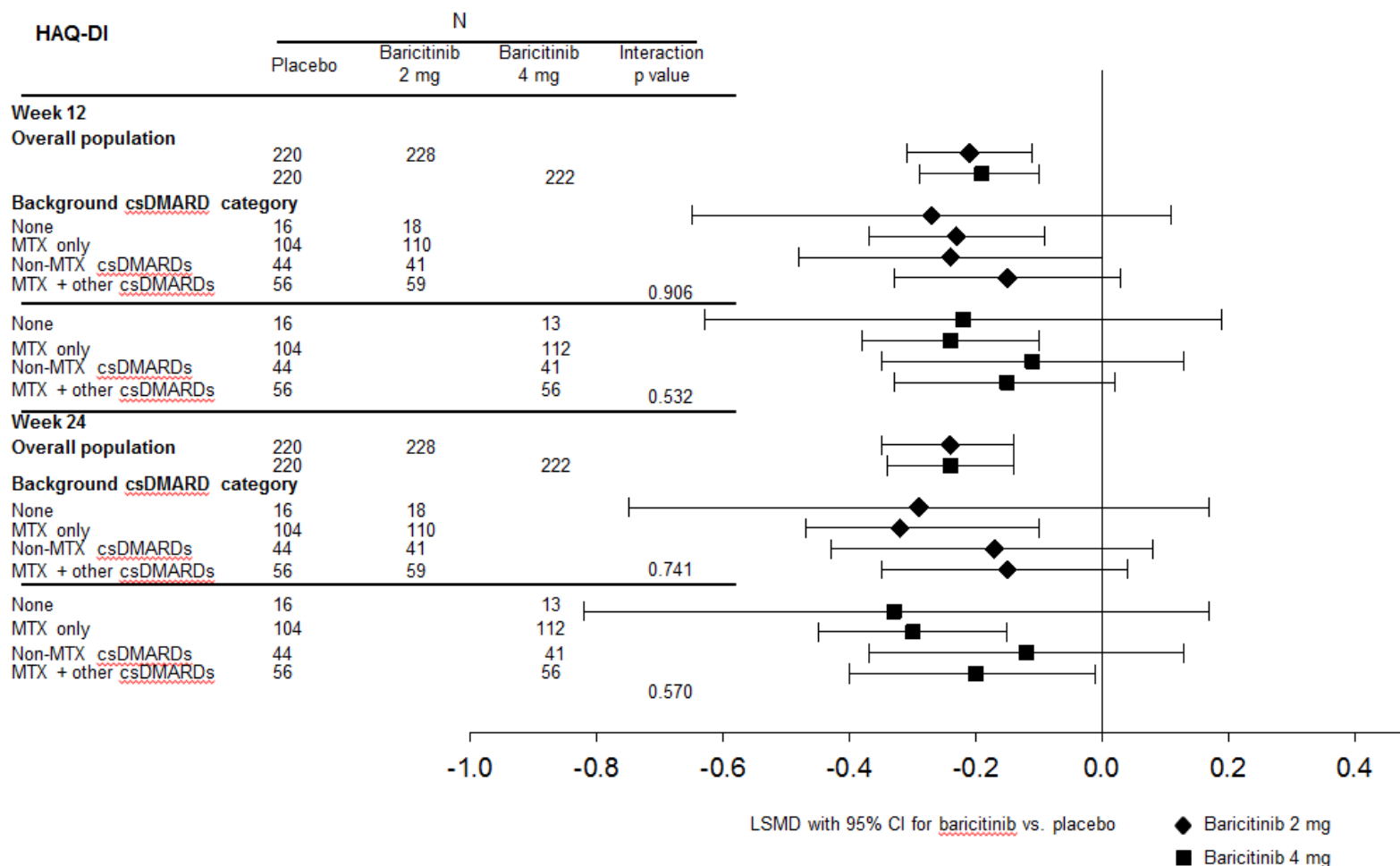


Supplemental Material.

**Table S1. Change from baseline in HAQ-DI in subgroups defined by concomitant csDMARD therapy**

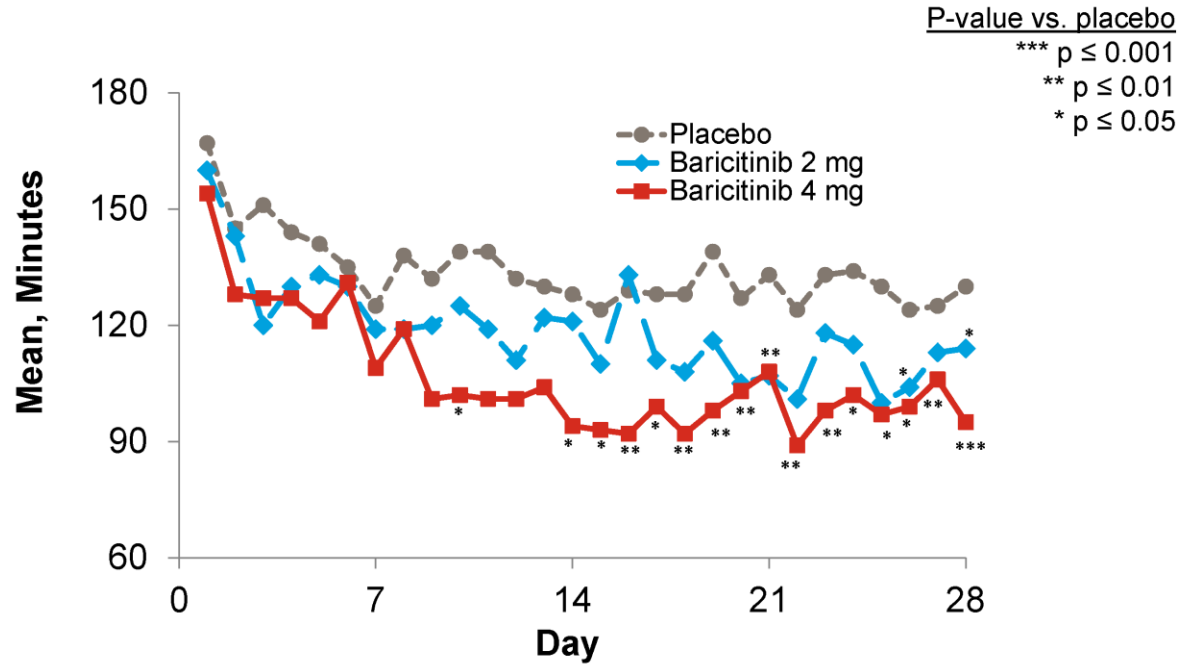


**Table S2. Baseline values and least squares mean changes from baseline at Weeks 12 and 24 for SF-36 domain scores**

SF-36 domain scores	Baseline mean (SD)			Week 12 LSM			Week 24 LSM		
	Placebo (N=228)	Baricitinib 2 mg (N=229)	Baricitinib 4 mg (N=227)	Placebo (N=228)	Baricitinib 2 mg (N=229)	Baricitinib 4 mg (N=227)	Placebo (N=228)	Baricitinib 2 mg (N=229)	Baricitinib 4 mg (N=227)
Physical functioning	32.1 (10.1)	32.2 (10.6)	32.3 (10.0)	4.0	7.2***	6.7**	5.0	8.1***	7.9**
Role physical	35.5 (8.9)	34.9 (9.2)	35.4 (9.4)	4.3	6.4**	5.6	4.6	7.0**	6.4*
Bodily pain	34.6 (7.3)	34.8 (8.0)	35.2 (7.5)	4.7	8.5***	8.0***	5.8	9.7***	10.2***
General health	36.9 (7.7)	37.3 (8.7)	36.3 (8.3)	3.4	5.7**	6.0***	3.0	5.8***	7.3***
Vitality	41.6 (9.9)	41.7 (10.7)	42.4 (9.8)	4.9	6.9*	6.7*	5.5	6.7	8.0**
Social functioning	39.8 (11.4)	39.7 (10.9)	41.1 (11.3)	3.6	4.6	4.2	3.9	4.6	5.0
Role emotional	41.7 (12.1)	40.0 (12.1)	41.2 (12.8)	3.4	3.9	4.2	3.1	4.0	4.4
Mental health	42.7 (11.0)	42.7 (12.0)	43.5 (11.8)	3.3	4.0	4.3	2.6	3.5	4.2

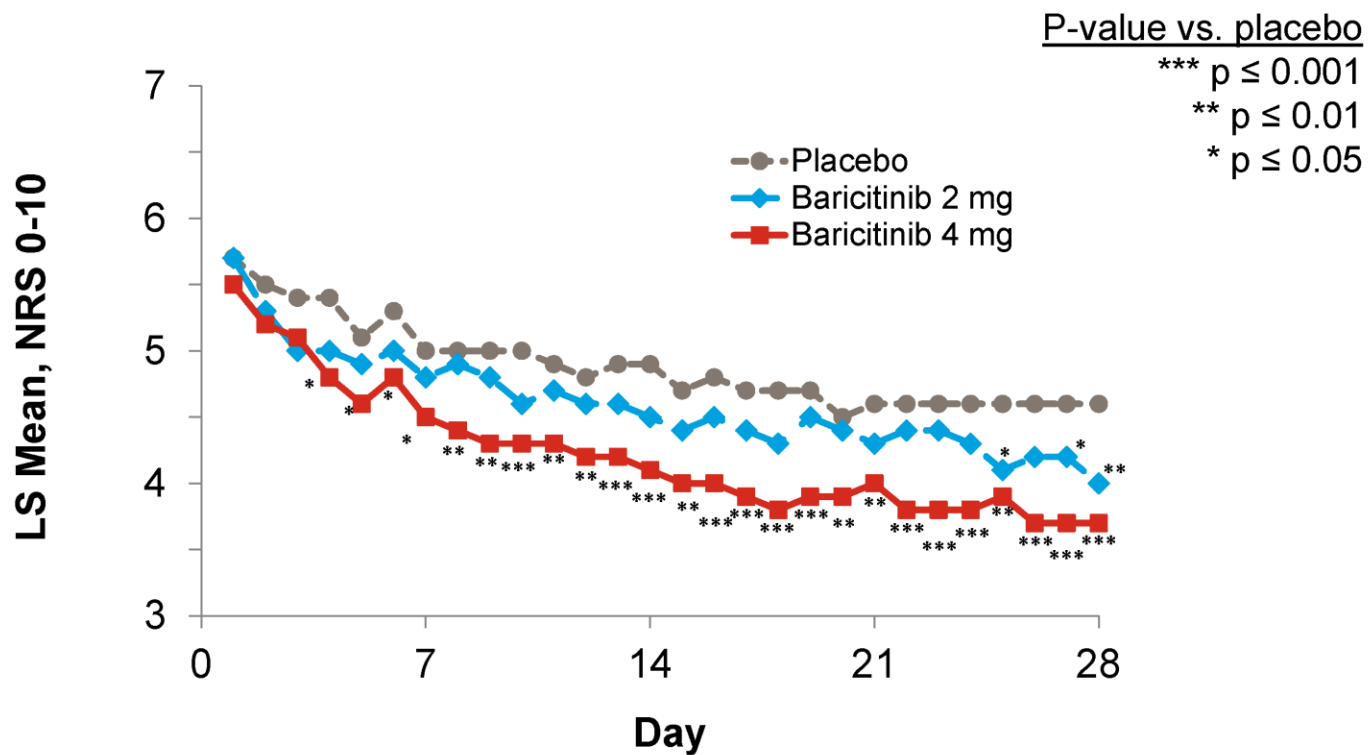
\*p≤0.05, \*\*p≤0.01, \*\*\*p≤0.001 vs. placebo

Supplementary Figure



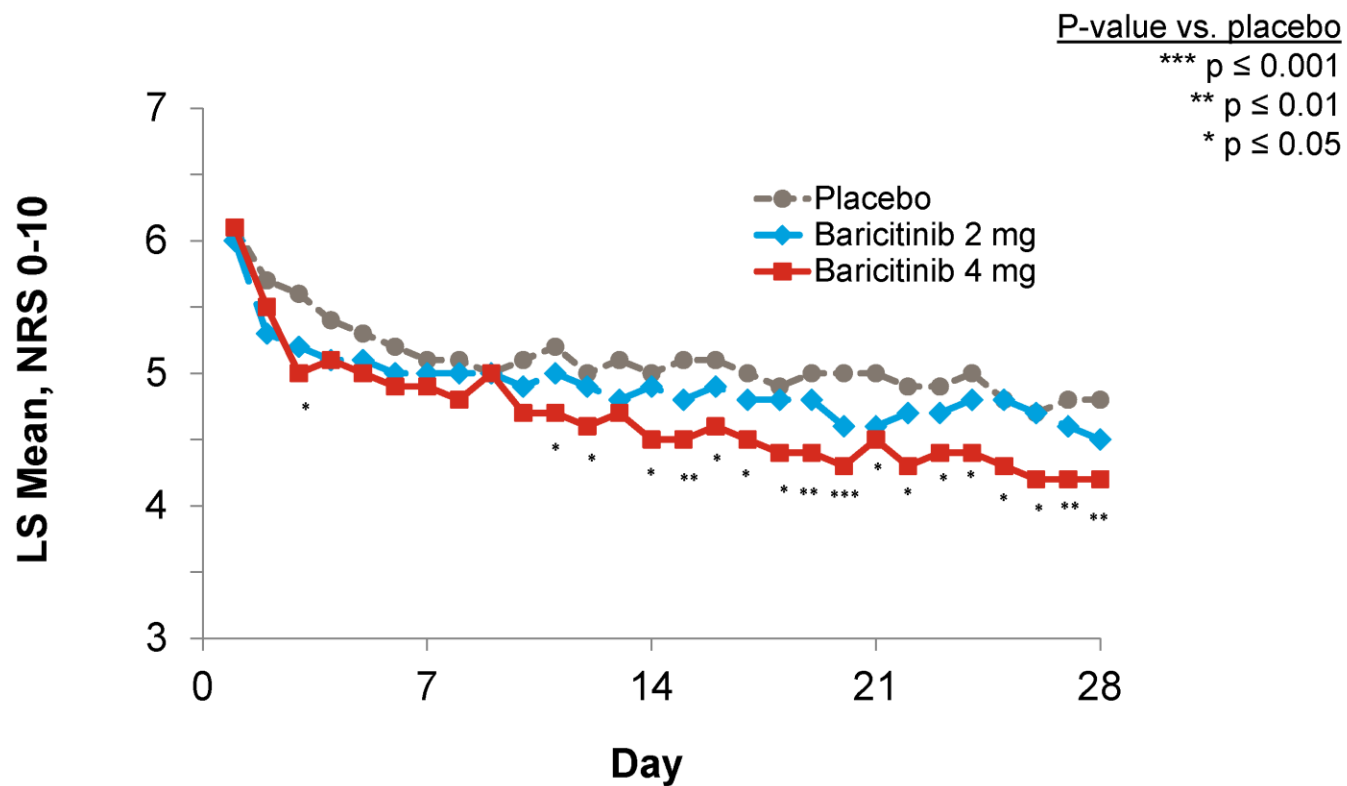
Data are mean duration of morning joint stiffness in minutes, based on daily diary entries. Daily question: "Please indicate how long your morning joint stiffness lasted today."

Indications of statistical significance based on analysis of median difference



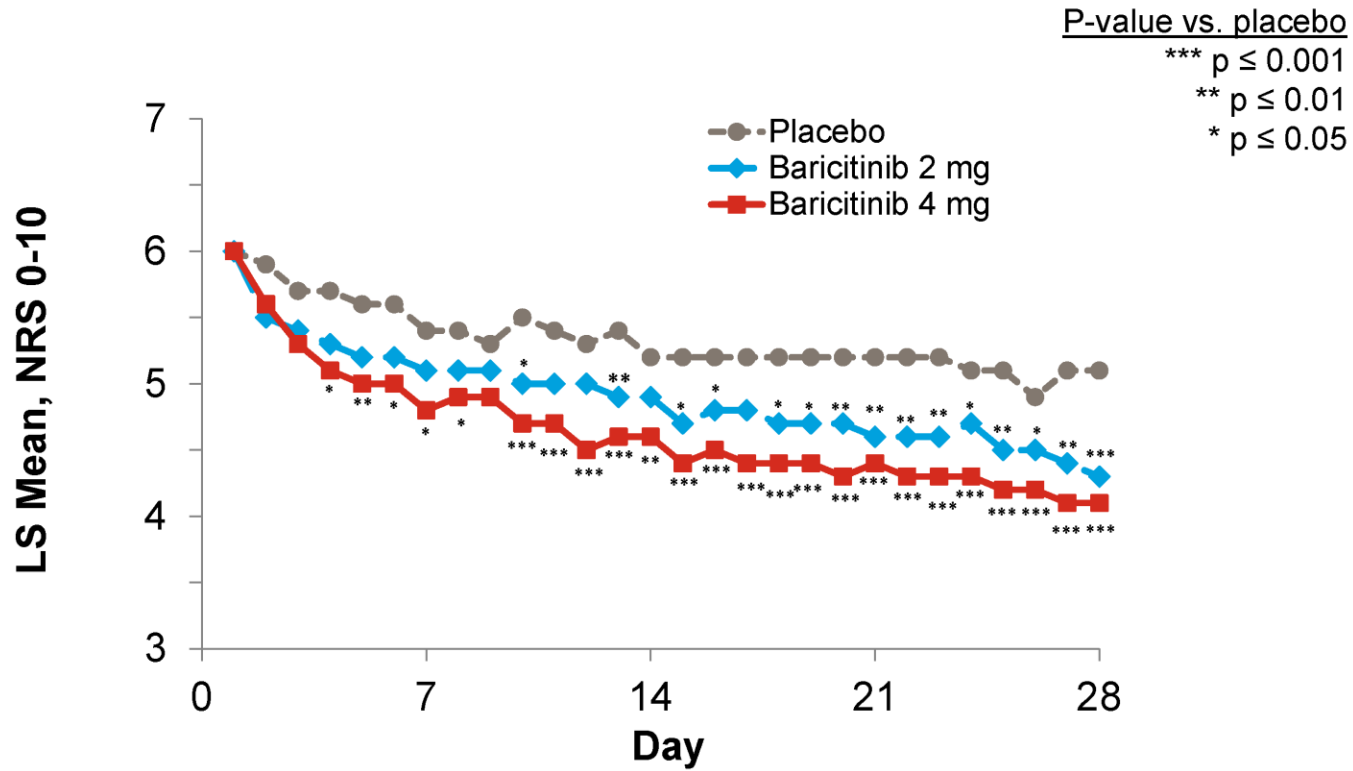
Data are LS mean scores for severity of morning joint stiffness, based on daily diary entries. Higher values indicate greater severity with numeric rating scale anchors (0 to 10). Daily question: "Please rate the overall level of morning joint stiffness you had from the time you woke up today."

Abbreviations: LS =Least Squares; NRS= numeric rating scale



Data are LS mean scores for worst tiredness, based on daily diary entries. Higher values indicate greater tiredness with numeric rating scale anchors (0 to 10) . Daily question: "Please rate your tiredness by selecting the one number that describes your tiredness at its worst in the last 24 hours."

Abbreviations: LS =Least Squares; NRS= numeric rating scale



Data are LS mean scores for worst joint pain, based on daily diary entries. Higher values indicate greater pain with numeric rating scale anchors (0 to 10). Daily question: "Please rate your joint pain by selecting the one number that describes your joint pain at its worst in the last 24 hours."

Abbreviations: LS =Least Squares; NRS= numeric rating scale