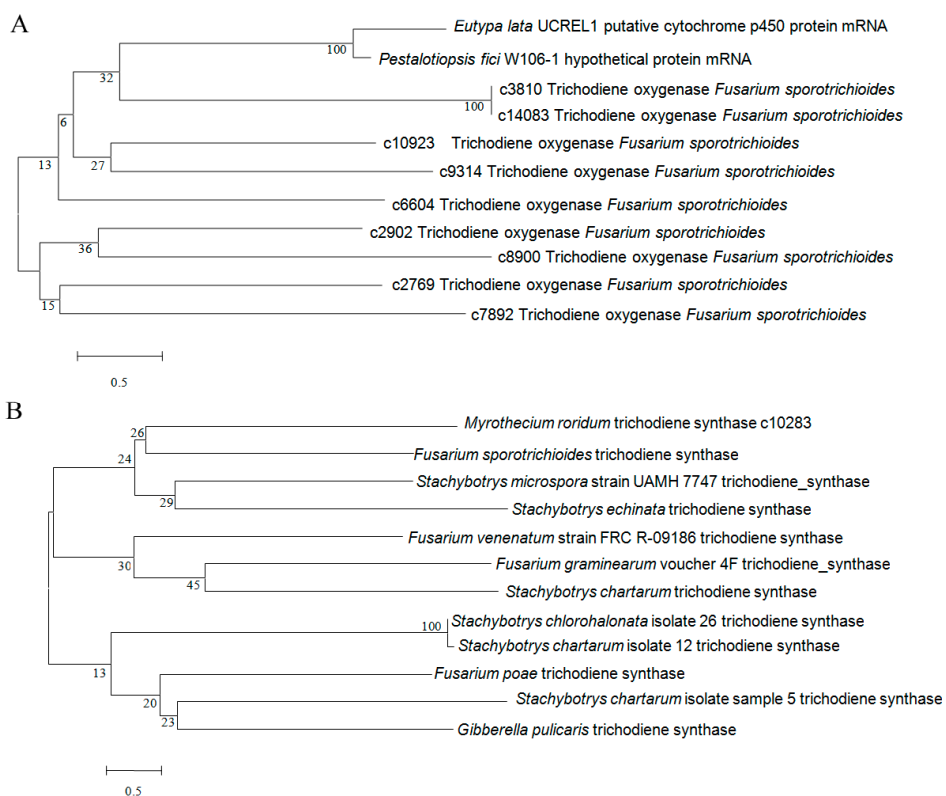
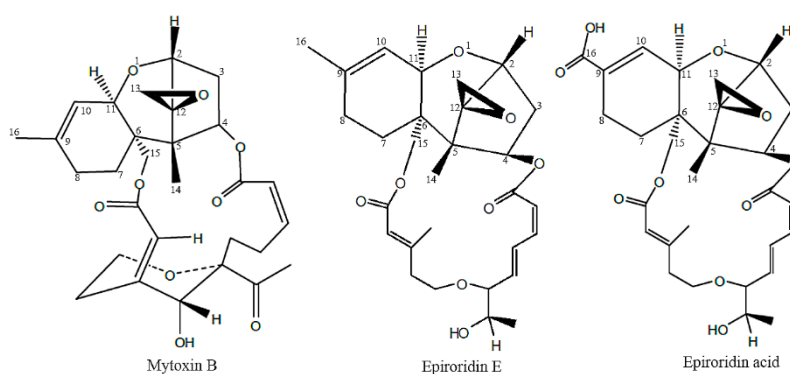


# Supplementary Materials: De Novo Transcriptome Analysis of Plant Pathogenic Fungus *Myrothecium roridum* and Identification of Genes Associated with Trichothecene Mycotoxin Biosynthesis

Wei Ye, Taomei Liu, Muzi Zhu, Weimin Zhang, Haohua Li, Zilei Huang and Saini Li



**Figure S1.** The phylogenetic tree analysis of *Tri4* and *Tri5* gene in *Myrothecium roridum*.



**Figure S2.** The structure of trichothecene mycotoxins isolated from *Myrothecium roridum*.

**Table S1.** Unigenes involved in the biosynthesis of trichothecenes in *M. roridum*.

| #Gene ID        | Swissprot_annotation   |
|-----------------|--|
| c9314.graph_c0  | Trichodiene oxygenase GN=TRI4 OS= <i>Fusarium sporotrichioides</i> PE=3 SV=1             |
| c21357.graph_c0 | Isotrichodermin C-15 hydroxylase GN=TRI11 OS= <i>Fusarium sporotrichioides</i> PE=3 SV=1 |
| c15279.graph_c0 | Isotrichodermin C-15 hydroxylase GN=TRI11 OS= <i>Fusarium sporotrichioides</i> PE=3 SV=1 |
| c6640.graph_c0  | Trichodiene oxygenase GN=TRI4 OS= <i>Fusarium sporotrichioides</i> PE=3 SV=1             |
| c12743.graph_c0 | Isotrichodermin C-15 hydroxylase GN=TRI11 OS= <i>Fusarium sporotrichioides</i> PE=3 SV=1 |
| c5491.graph_c0  | Isotrichodermin C-15 hydroxylase GN=TRI11 OS= <i>Fusarium sporotrichioides</i> PE=3 SV=1 |
| c12125.graph_c0 | Isotrichodermin C-15 hydroxylase GN=TRI11 OS= <i>Fusarium sporotrichioides</i> PE=3 SV=1 |
| c22090.graph_c0 | Isotrichodermin C-15 hydroxylase GN=TRI11 OS= <i>Fusarium sporotrichioides</i> PE=3 SV=1 |
| c25252.graph_c0 | Isotrichodermin C-15 hydroxylase GN=TRI11 OS= <i>Fusarium sporotrichioides</i> PE=3 SV=1 |
| c5491.graph_c1  | Isotrichodermin C-15 hydroxylase GN=TRI11 OS= <i>Fusarium sporotrichioides</i> PE=3 SV=1 |
| c21206.graph_c0 | Isotrichodermin C-15 hydroxylase GN=TRI11 OS= <i>Fusarium sporotrichioides</i> PE=3 SV=1 |
| c13046.graph_c0 | Isotrichodermin C-15 hydroxylase GN=TRI11 OS= <i>Fusarium sporotrichioides</i> PE=3 SV=1 |
| c12970.graph_c0 | Isotrichodermin C-15 hydroxylase GN=TRI11 OS= <i>Fusarium sporotrichioides</i> PE=3 SV=1 |
| c9277.graph_c0  | Trichodiene oxygenase GN=TRI4 OS= <i>Fusarium sporotrichioides</i> PE=3 SV=1             |

**Table S2.** Primers used for the qRT-PCR of genes related to the trichothecene biosynthesis in *M. roridum*.

| Genes          | Sequences (5'-3')        |
|----------------|--------------------------|
| <i>Tri3</i> F  | TTCCATCCATGGCAGACTTG     |
| <i>Tri3</i> R  | ATCCATCTCGTAGGAGTCC      |
| <i>Tri4</i> F  | GCGGCTGCCACATATTTGCCCG   |
| <i>Tri4</i> R  | TGGTTGTGATAAAAAGGAAGTAGG |
| <i>Tri5</i> F  | TTTCTGCCCAGAAATATCTATC   |
| <i>Tri5</i> R  | ACGGTGAGCTTCTCCAGAGCCTGG |
| <i>Tri6</i> F  | GGCTTCTTCCACGACTATGAAATG |
| <i>Tri6</i> R  | CCTCCGTTCCGATCTTGCCA     |
| <i>Tri11</i> F | ATGCCCGTTTTGAGAACC       |
| <i>Tri11</i> R | CAGGCTCCTTCTCCCTTG       |
| <i>Tri12</i> F | ATCGCTTCGGTCGCCGGC       |
| <i>Tri12</i> R | TTCCGGAAGCCCAGCCTC       |

**Table S3.** Primers used for the amplification of genes related to the trichothecene biosynthesis in *M. roridum*.

| Genes          | Sequences (5'-3')                   |
|----------------|-------------------------------------|
| <i>Tri4</i> F  | GGAATTCCATATGGCTGTTCCAGAGGATGTG     |
| <i>Tri4</i> R  | CCGCTCGAGCTTCTCCTCTGCGTACACC        |
| <i>Tri11</i> F | GGAATTCCATATGCGCTATGGCCAAATCG       |
| <i>Tri11</i> R | CCGCTCGAGTCCACGAGACGTGAAGTTG        |
| <i>Tri5</i> F  | GGAATTCCATATGTTTCTGCCCAGAAATATCTATC |
| <i>Tri5</i> R  | CCGCTCGAGACGGTGAGCTTCTCCAGAGCCTGG   |