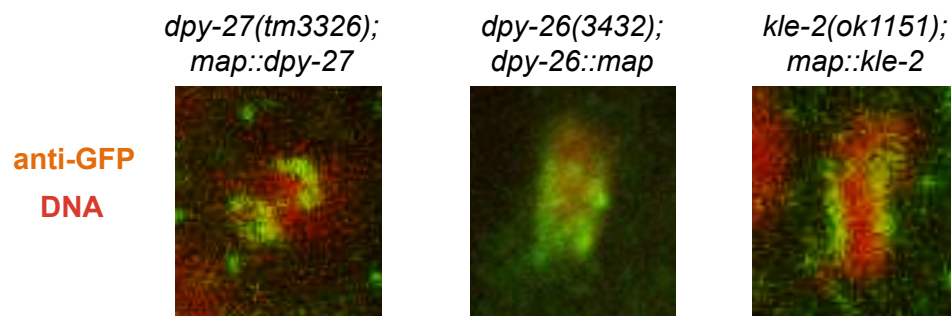


**A**

genotype	<i>dpy-27(tm3326)</i>	<i>dpy-26(tm3432)</i>	<i>kle-2(ok1151)</i>
<i>m+z-</i> mutant	dumpy	dumpy	germline-less, sterile, uncoordinated, protruding vulvae
<i>m-z-</i> mutant	dumpy; sterile	dumpy; sterile	n/a
<i>m-z-</i> mutant; <i>map</i> -tagged transgene	appear wild-type	appear wild-type	appear wild-type, but temperature-sensitive

**B**



**C**

