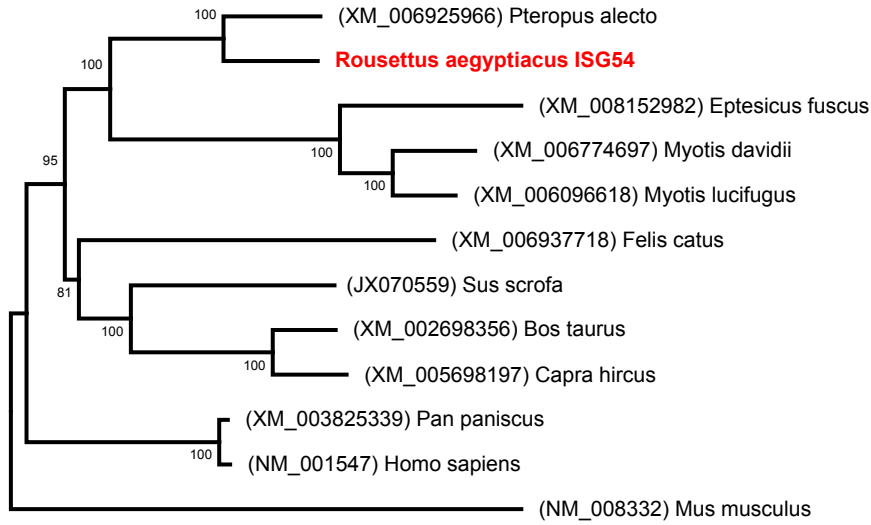
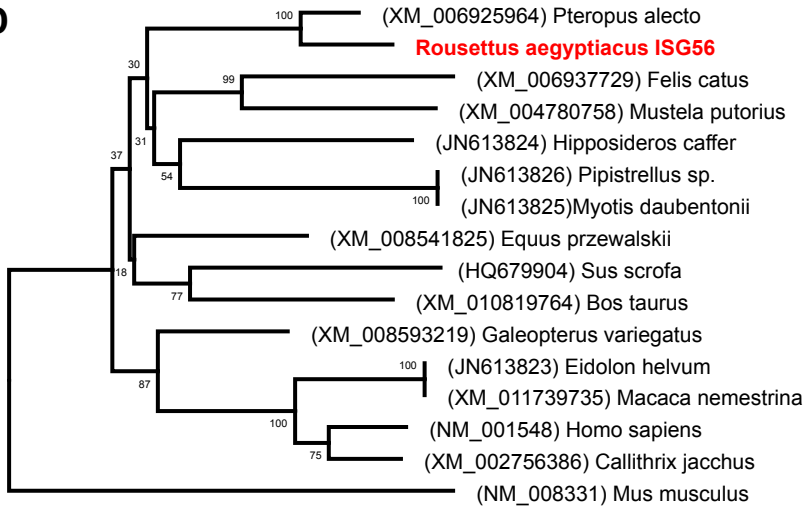


Fig. S1. Innate immune genes of Egyptian rousette demonstrate sequence similarity to those from other bats. Phylogenetic neighbor-joining trees based on p-distances with pairwise gap deletion. Bootstrap values (1,000 replicates) are present at the nodes, and sequences generated during this study are shown in red. **A**, *IFN α* ; **B**, *IFN β* ; **C**, *ISG54*; **D**, *ISG56*; **E**, *IFN λ* ; **F**, *MAVS*; **G**, *TMEM173*; **H**, *TOMM70A*.

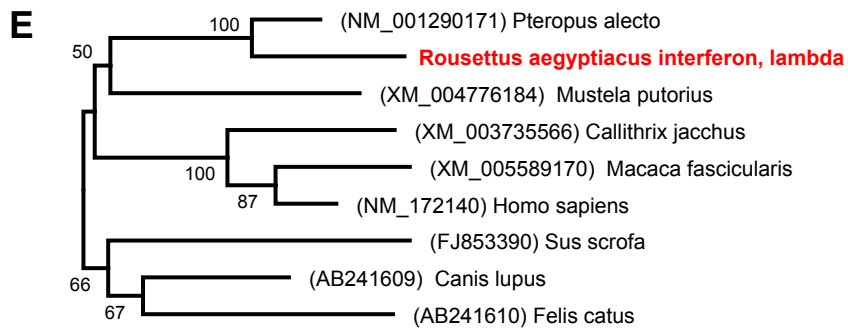
C

0.05

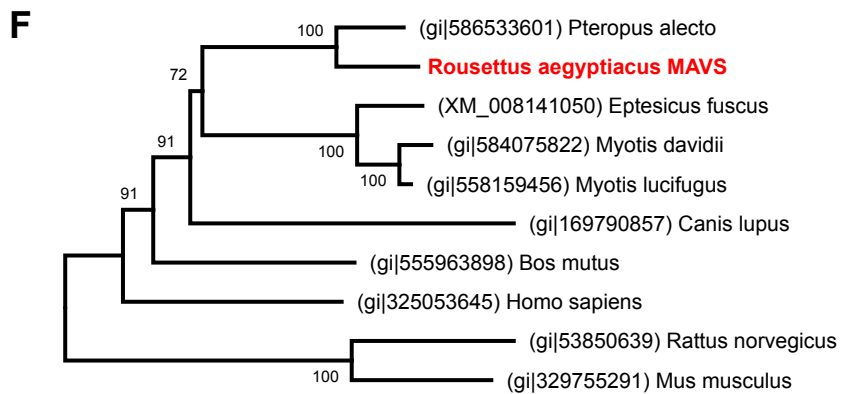
D

0.02

Fig. S1 (continued).



0.02



0.05

Fig. S1 (continued).

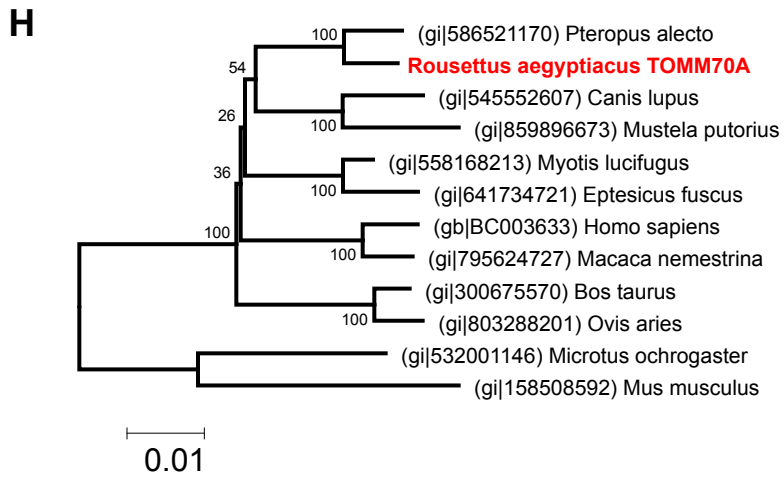
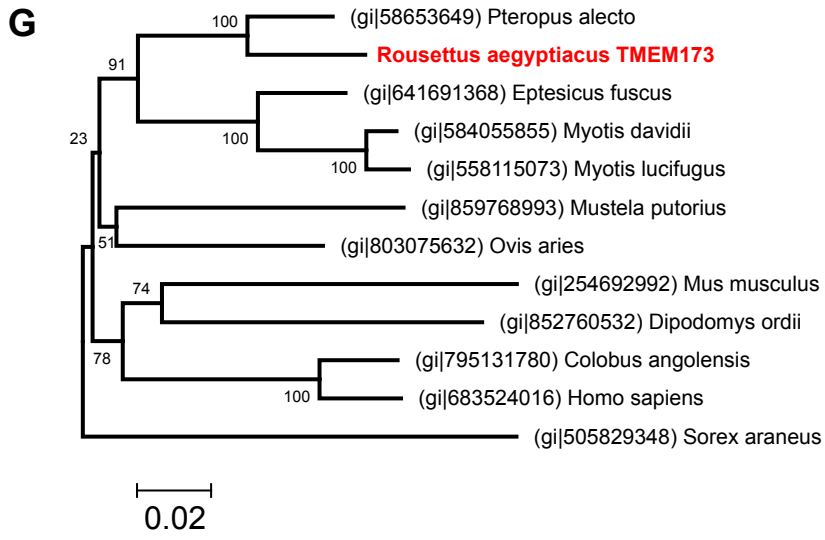


Fig. S1 (continued).