

Okanin, effective constituent of the flower tea *Coreopsis tinctoria*,  
attenuates LPS-induced microglial activation through inhibition of the  
TLR4/NF- $\kappa$ B signaling pathways

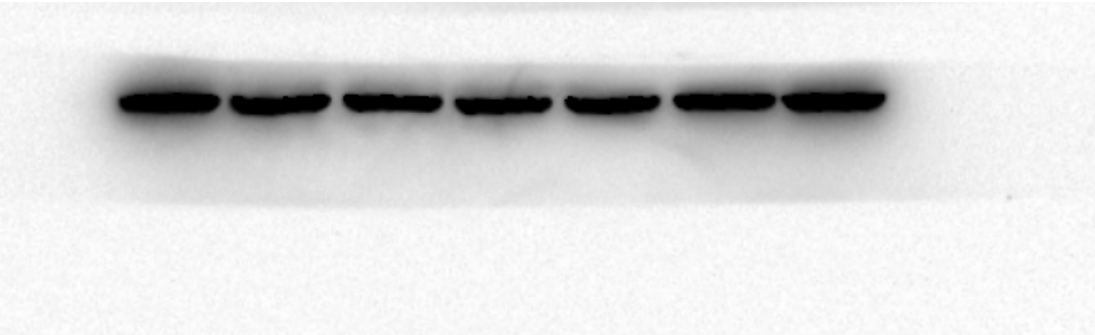
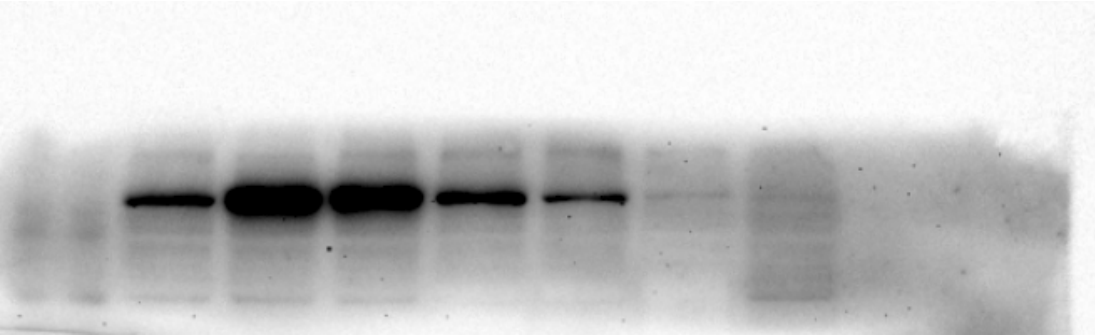
Yue Hou<sup>1</sup>, Guoxun Li<sup>1</sup>, Jian Wang<sup>2</sup>, Yingni Pan<sup>3</sup>, Kun Jiao<sup>1</sup>, Juan Du<sup>1</sup>, Ru Chen<sup>1</sup>, Bing Wang<sup>1\*</sup> & Ning Li<sup>3,\*</sup>

<sup>1</sup>College of Life and Health Sciences, Northeastern University, Shenyang 110819, China

<sup>2</sup>School of Pharmaceutical Engineering, Shenyang Pharmaceutical University, Shenyang 110016, China

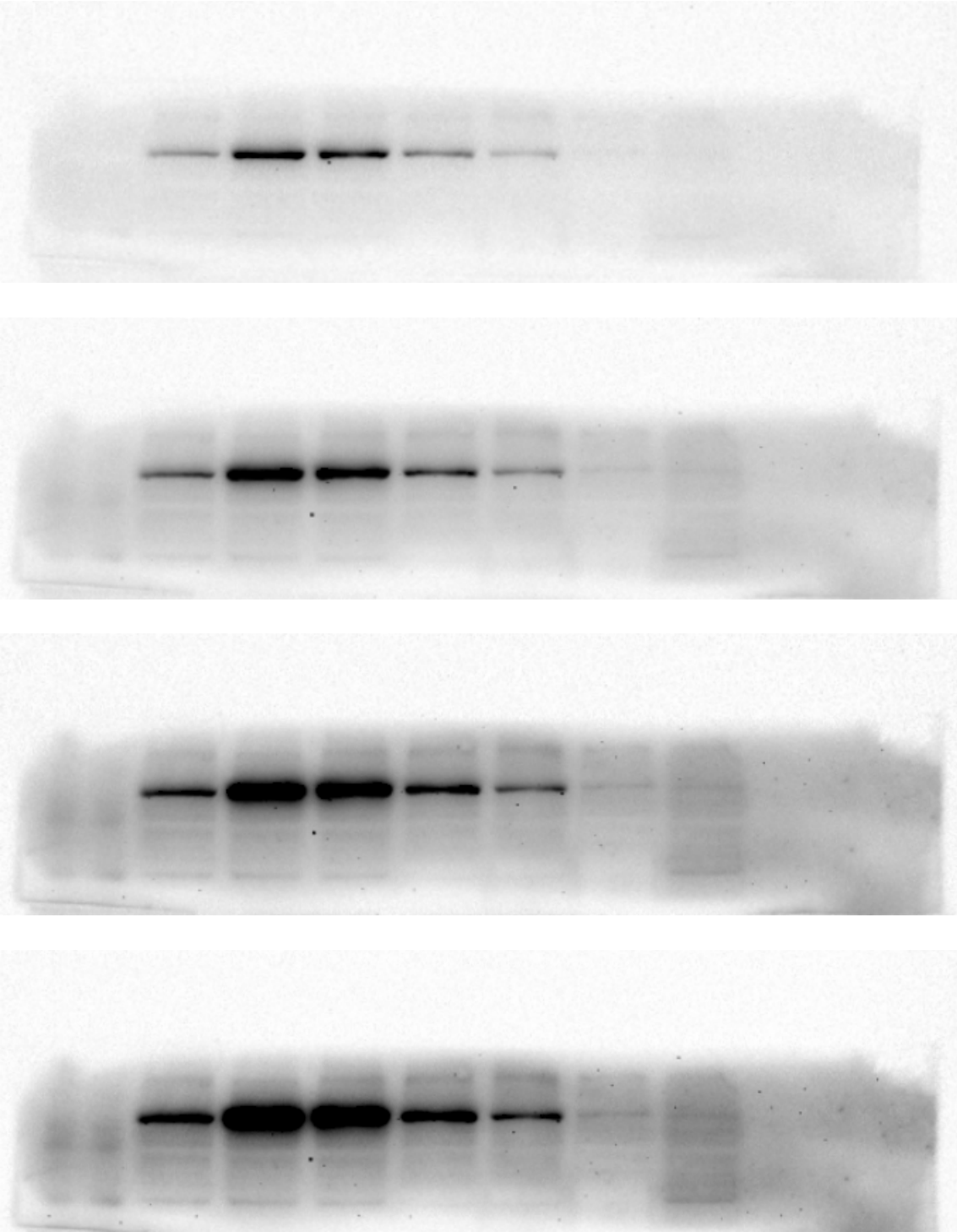
<sup>3</sup>School of Traditional Chinese Materia Medica, Key Laboratory of Structure-Based Drug Design and Discovery, Shenyang Pharmaceutical University, Ministry of Education, Shenyang 110016, China

Supplementary Figure 1A. Full-length blots of iNOS (up) and  $\beta$ -actin (down).



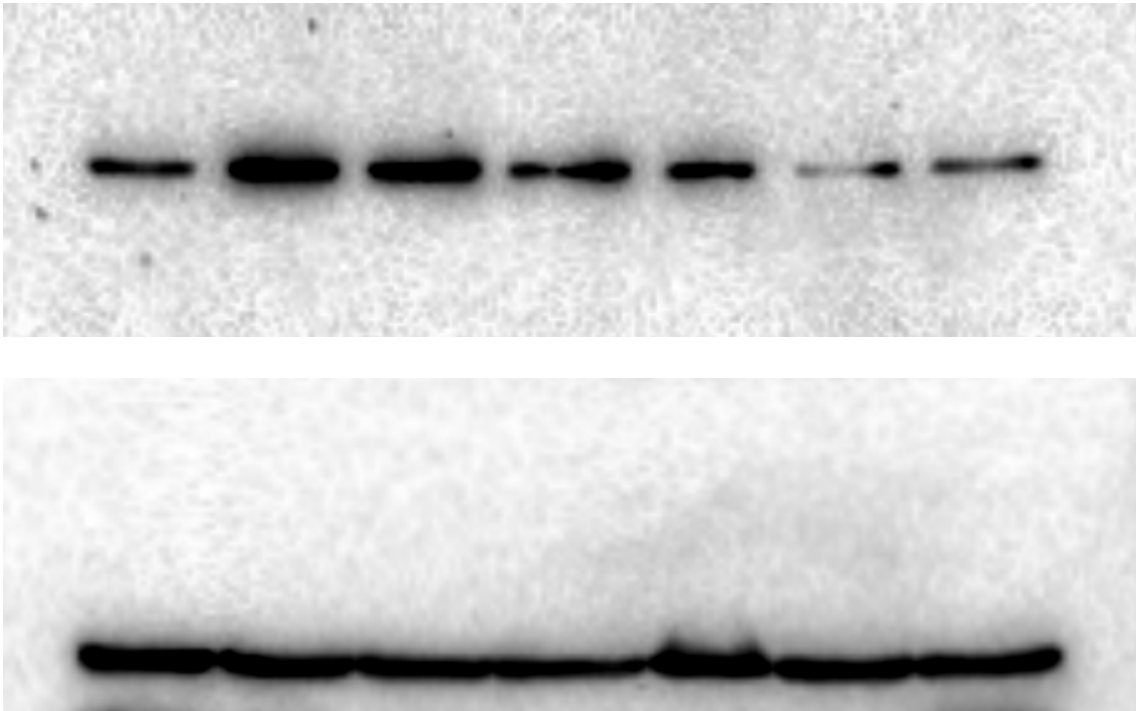
LPS	-	+	+	+	+	+	+
Okanin ( $\mu$ M)	-	-	1	10	30	100	-
MINO ( $\mu$ M)	-	-	-	-	-	-	30

Supplementary Figure 1B. Multiple exposures of full-length blots of iNOS.



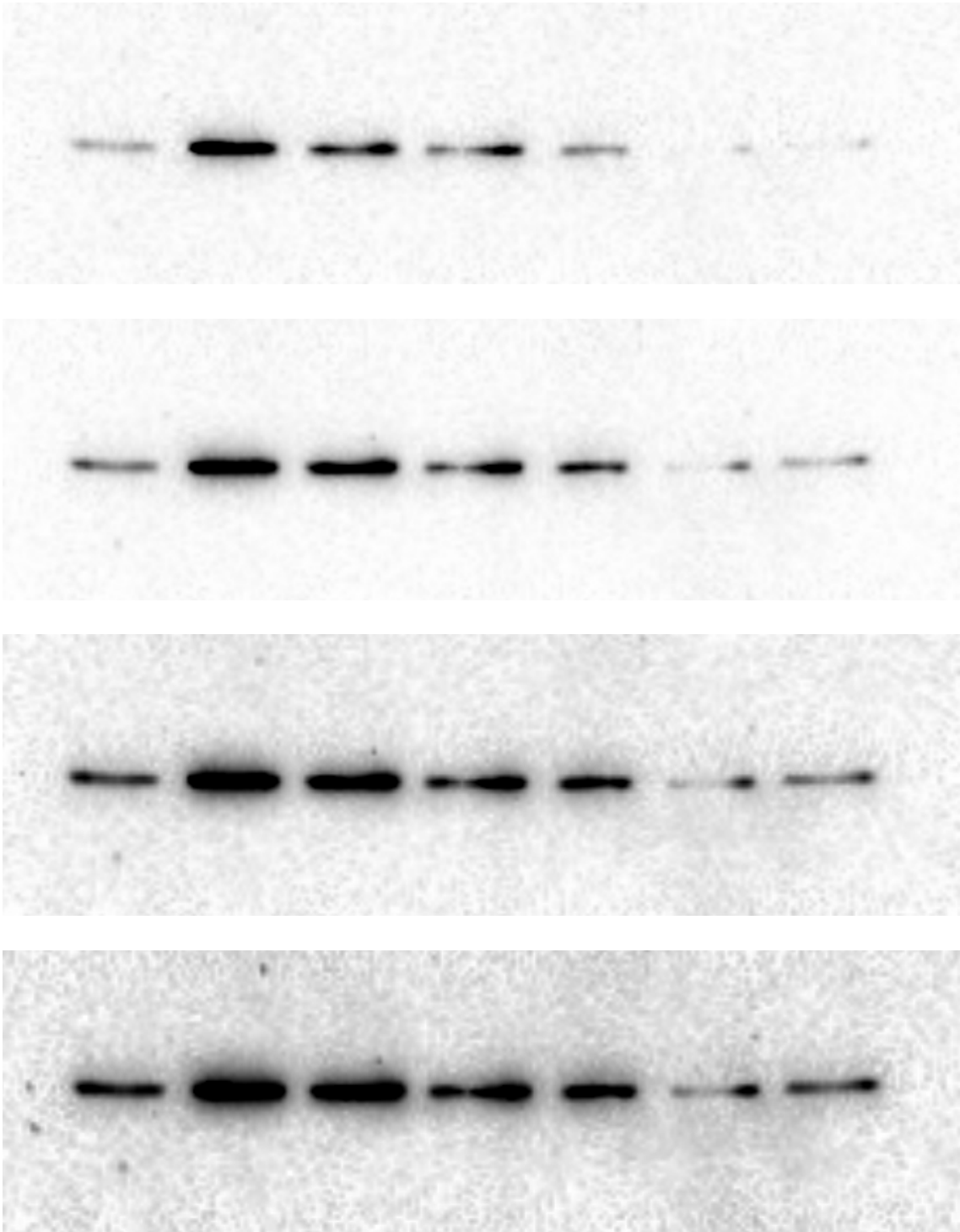
LPS	-	+	+	+	+	+	+
Okanin (μM)	-	-	1	10	30	100	-
MINO (μM)	-	-	-	-	-	-	30

Supplementary Figure 2A. Full-length blots of p-I $\kappa$ B $\alpha$  (up) and  $\beta$ -actin (down).



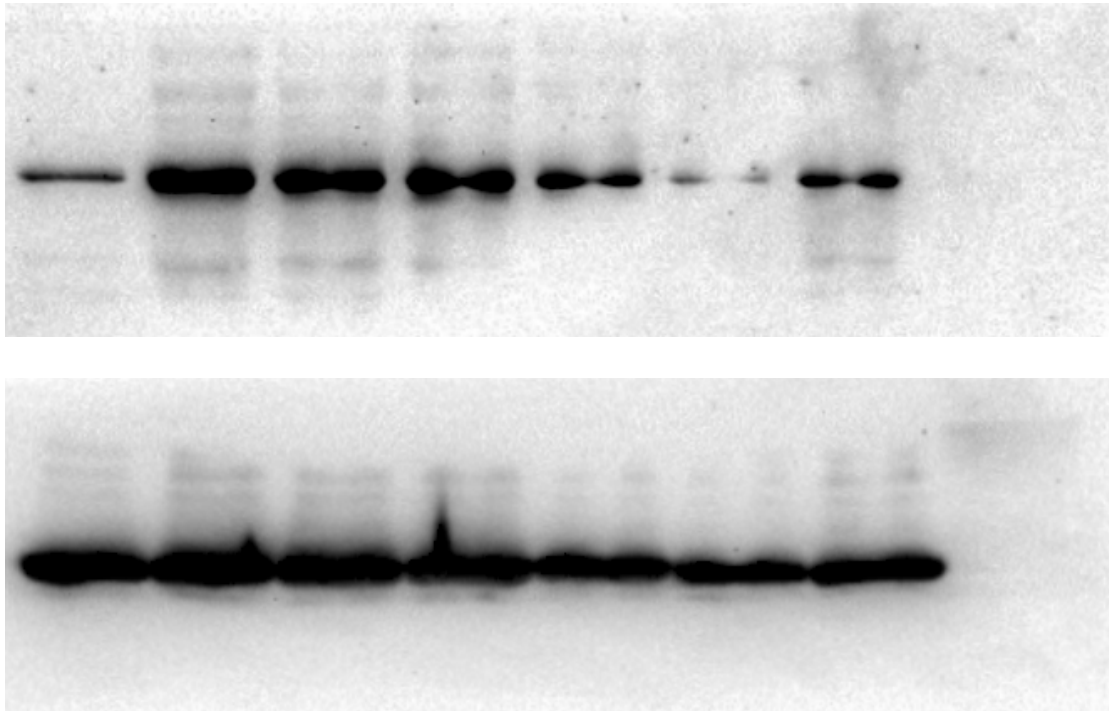
LPS	-	+	+	+	+	+	+
Okanin ( $\mu$ M)	-	-	1	10	30	100	-
MINO ( $\mu$ M)	-	-	-	-	-	-	30

Supplementary Figure 2B. Multiple exposures of full-length blots of p-I $\kappa$ B $\alpha$ .



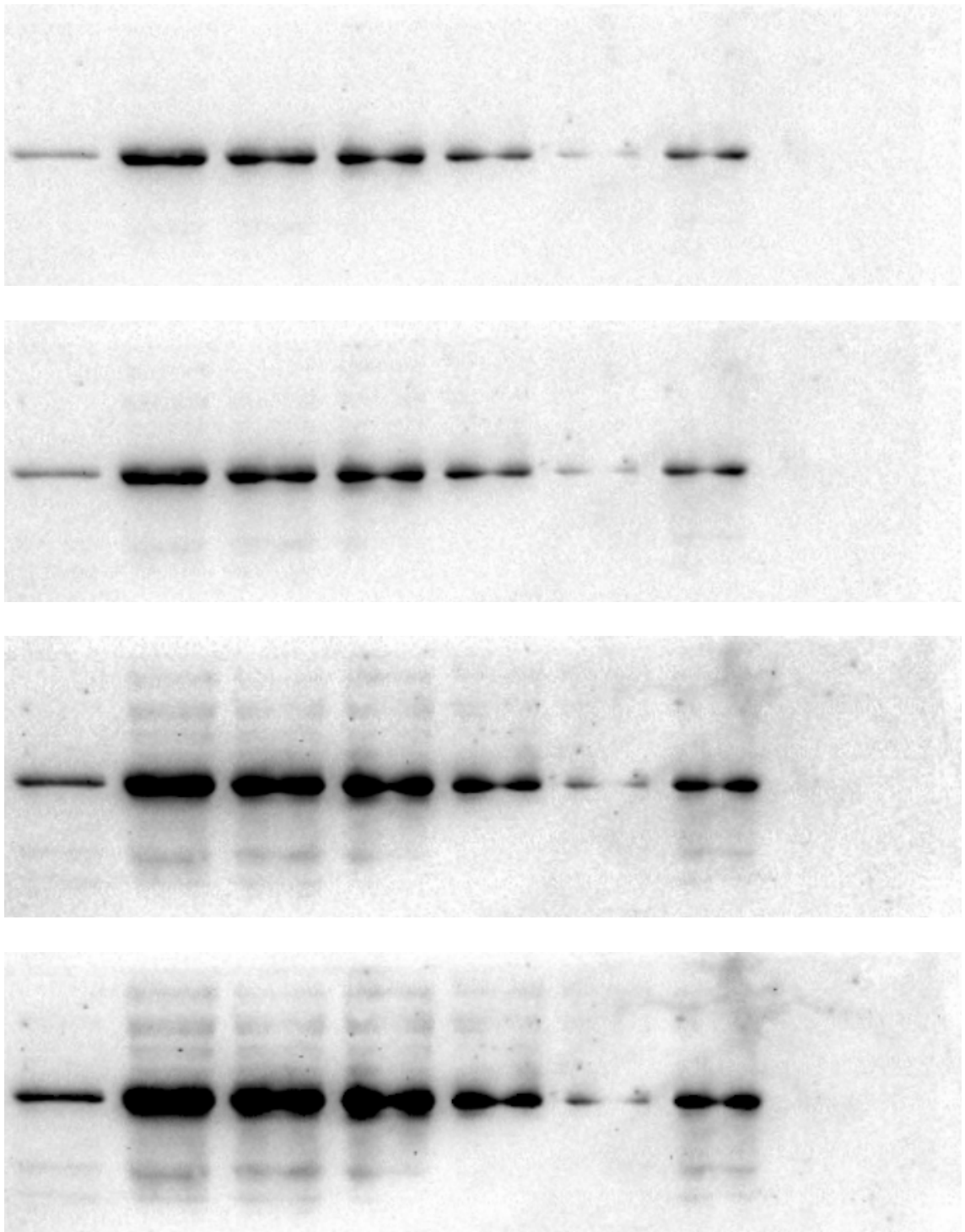
LPS	-	+	+	+	+	+	+
Okanin (μM)	-	-	1	10	30	100	-
MINO (μM)	-	-	-	-	-	-	30

Supplementary Figure 3A. Full-length blots of NF- $\kappa$ B p65 (up) and Histone (down).



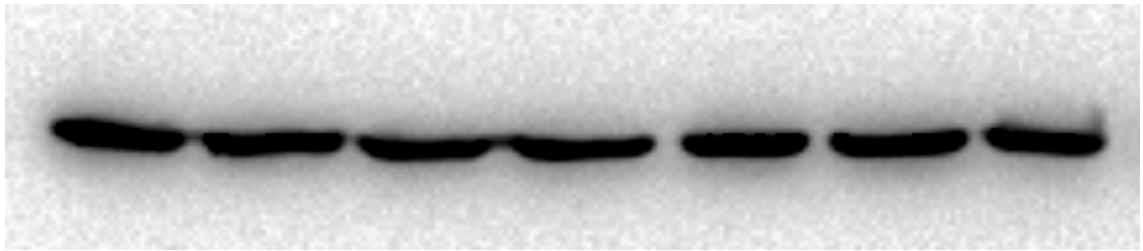
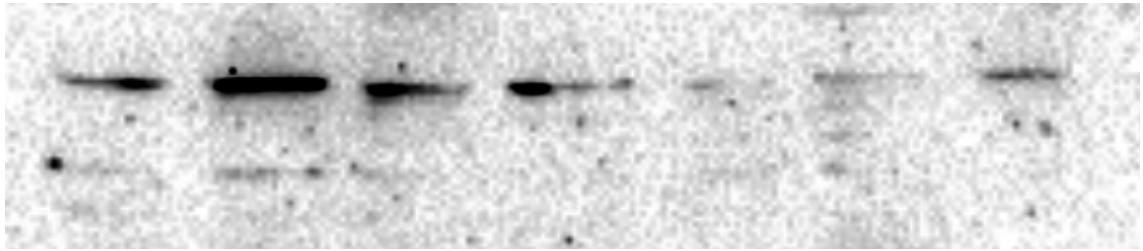
LPS	-	+	+	+	+	+	+
Okanin ( $\mu$ M)	-	-	1	10	30	100	-
MINO ( $\mu$ M)	-	-	-	-	-	-	30

Supplementary Figure 3B. Multiple exposures of full-length blots of NF-κB p65.



LPS	-	+	+	+	+	+	+
Okanin (μM)	-	-	1	10	30	100	-
MINO (μM)	-	-	-	-	-	-	30

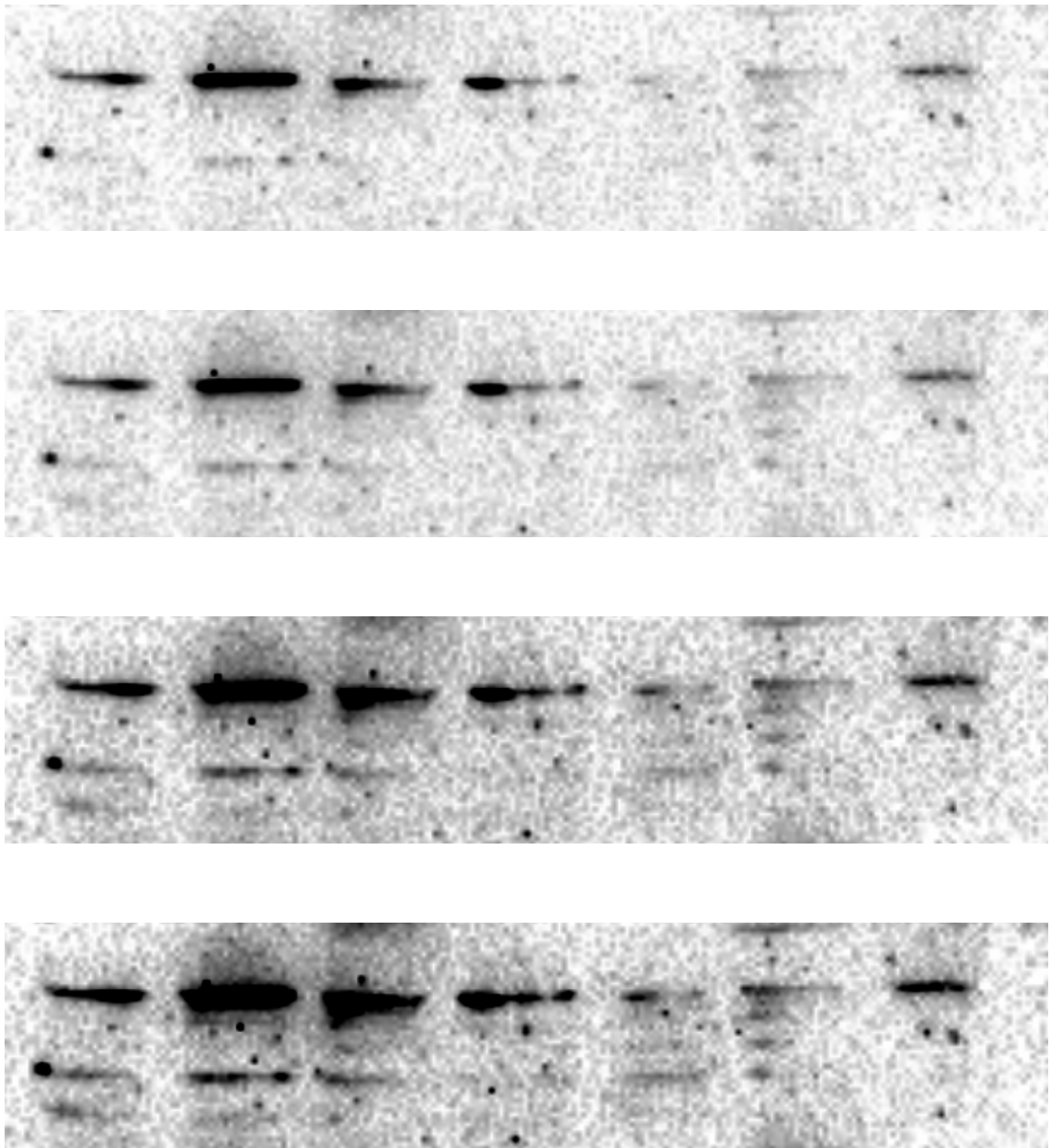
Supplementary Figure 4A. Full-length blots of TLR4 (up) and  $\beta$ -actin (down).



LPS	-	+	+	+	+	+	+
Okanin ( $\mu$ M)	-	-	1	10	30	100	-
MINO ( $\mu$ M)	-	-	-	-	-	-	30



Supplementary Figure 8. Multiple exposures of full-length blots of TLR4.



LPS	—	+	+	+	+	+	+
Okanin (μM)	—	—	1	10	30	100	—
MINO (μM)	—	—	—	—	—	—	30