

Supplementary Figures to:

Genome-wide identification and expression analysis of TCP transcription factors in *Gossypium raimondii*

Jun Ma ¹, Qinglian Wang ², Runrun Sun ^{1,2}, Fuliang Xie ¹, Don C. Jones ³, Baohong Zhang ^{1,2*}

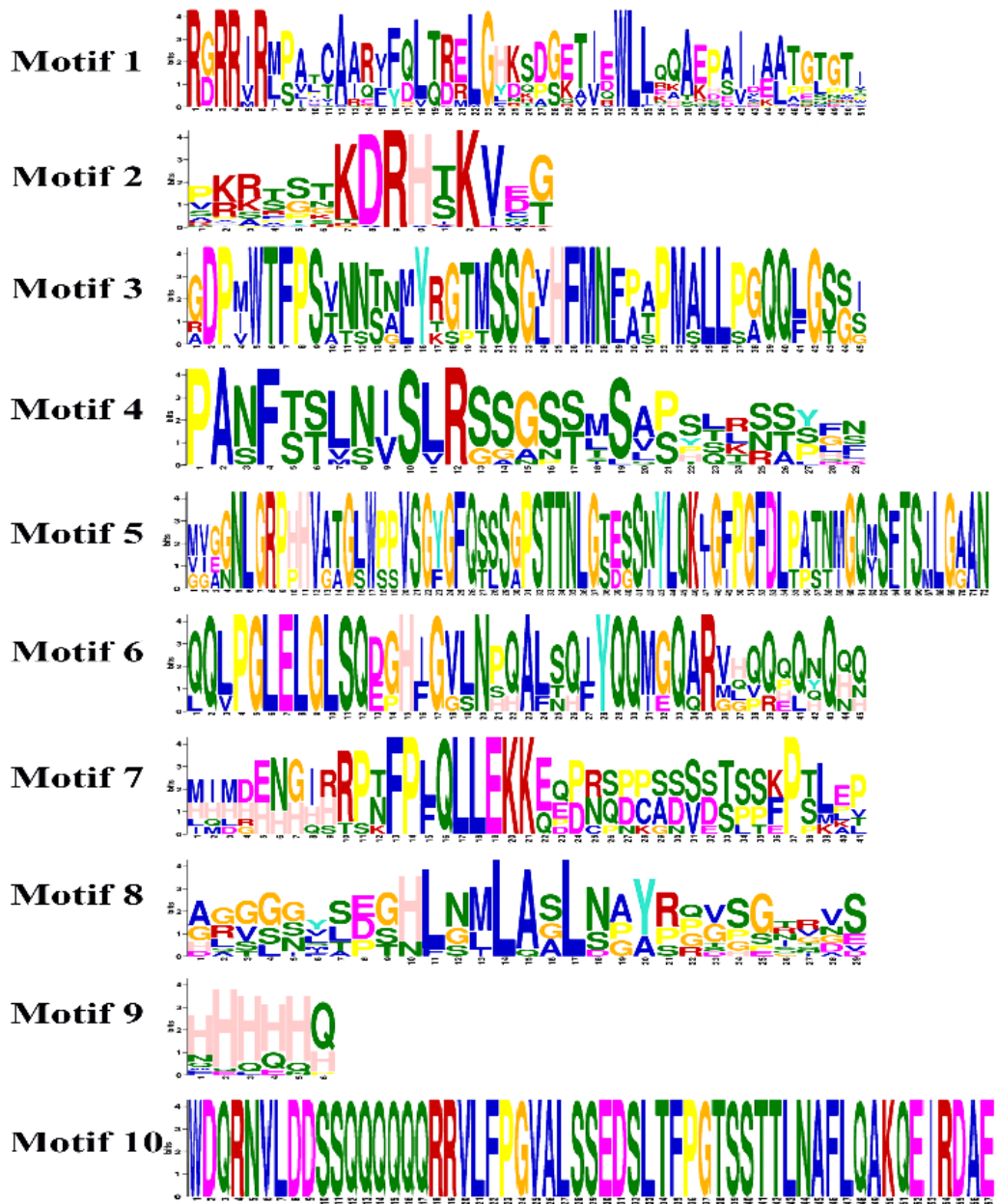
¹ Department of Biology, East Carolina University, Greenville, NC 27858, USA

² Henan Institute of Sciences and Technology, Xinxiang, Henan 453003, P. R. China

³ Cotton Incorporated, Cary, NC 27513, USA

*Corresponding Author

Dr. Baohong Zhang
Department of Biology
East Carolina University
Greenville, NC 27858
Phone: 252-328-2021
Fax: 252-328-4178
Email: zhangb@ecu.edu

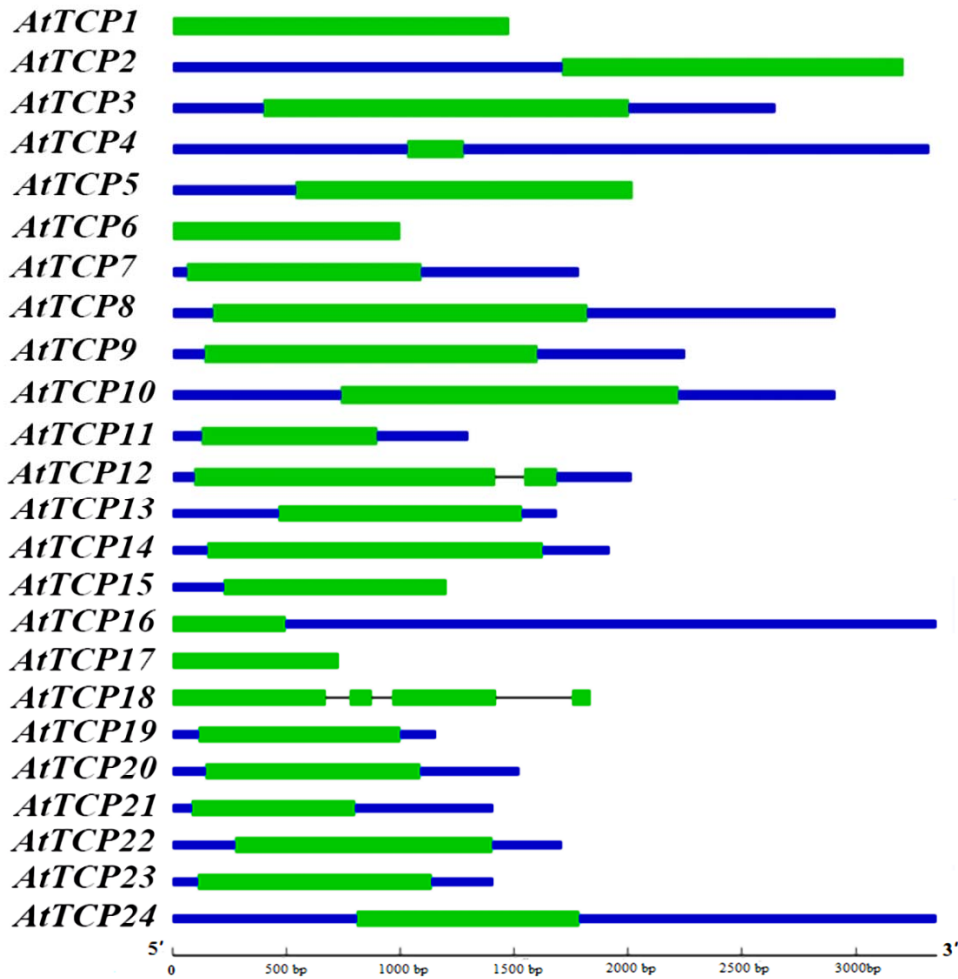


(Continued)



Supplementary Figure 1. Sequence logos for conserved motifs identified in GrTCP proteins.

The total height of the letters stands for the information content of the position in bits and numbers on the horizontal axis represent the sequence positions in the motifs.



Supplementary Figure 2. Exon/intron structure of Arabidopsis TCP genes. The blue lines represent 5'-UTR or 3'-UTR, green boxes represent exons and black lines indicate introns.