

## Supplementary Information for

### Glycation of paraoxonase 1 by high glucose instigates endoplasmic reticulum stress to induce endothelial dysfunction *in vivo*

Wei Yu<sup>1,2,#</sup>, Xiaoli Liu<sup>2,#</sup>, Liru Feng<sup>2</sup>, Hui Yang<sup>2</sup>, Weiye Yu<sup>2</sup>, Tiejian Feng<sup>2</sup>, Shuangxi Wang<sup>3</sup>, Jun Wang<sup>2,\*</sup>, Ning Liu<sup>1,\*</sup>

<sup>1</sup>Central Laboratory, Second Hospital, Jilin University, Changchun 130041, China; <sup>2</sup>Shenzhen Center for Chronic Disease Control, Shenzhen 518020, China; <sup>3</sup>Department of Pharmacology, College of Pharmacy, Xinxiang Medical University, Xinxiang, 453003, China

# These authors contributed equally to this work.

\* Correspondence to Jun Wang or Ning Liu, Email [junwangwh@hotmail.com](mailto:junwangwh@hotmail.com) or [liu\\_ning@jlu.edu.cn](mailto:liu_ning@jlu.edu.cn)

Running Title: PON1 glycation induces ER stress

#### Contents

1. Supplementary Figure Legends S1-S11
2. Supplementary Figure S1-S11

## **Supplementary Figure Legends**

**Supplementary Figure S1.** Full western blot pictures shown in Figure 1A.

**Supplementary Figure S2.** Full blots for blots shown in Figure 1D.

**Supplementary Figure S3.** Full blots for blots shown in Figure 1E.

**Supplementary Figure S4.** Full blots for blots shown in Figure 2A.

**Supplementary Figure S5.** Full blots for blots shown in Figure 2D.

**Supplementary Figure S6.** Full blots for blots shown in Figure 2E.

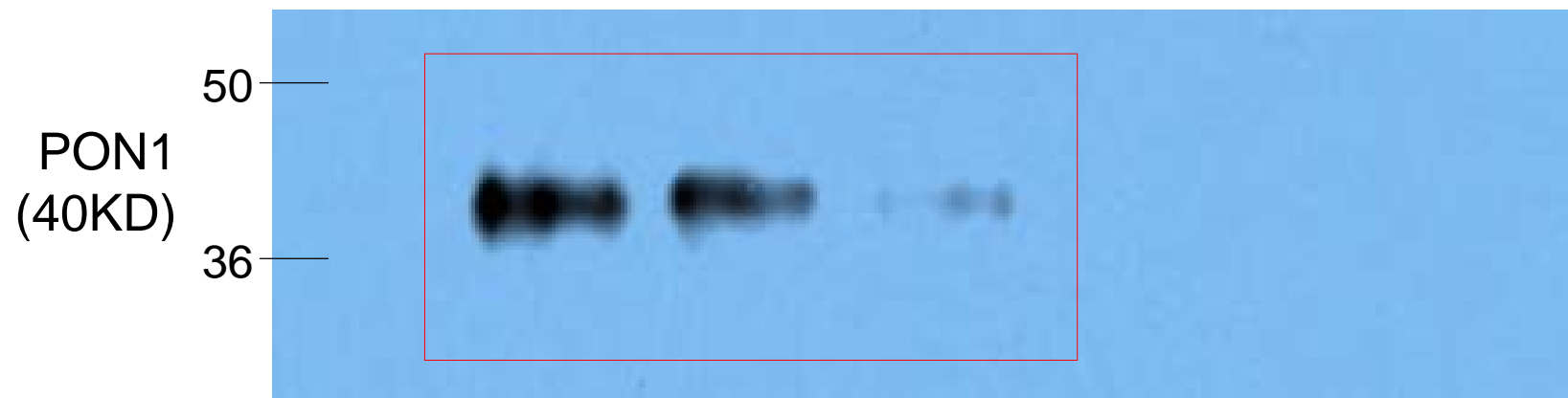
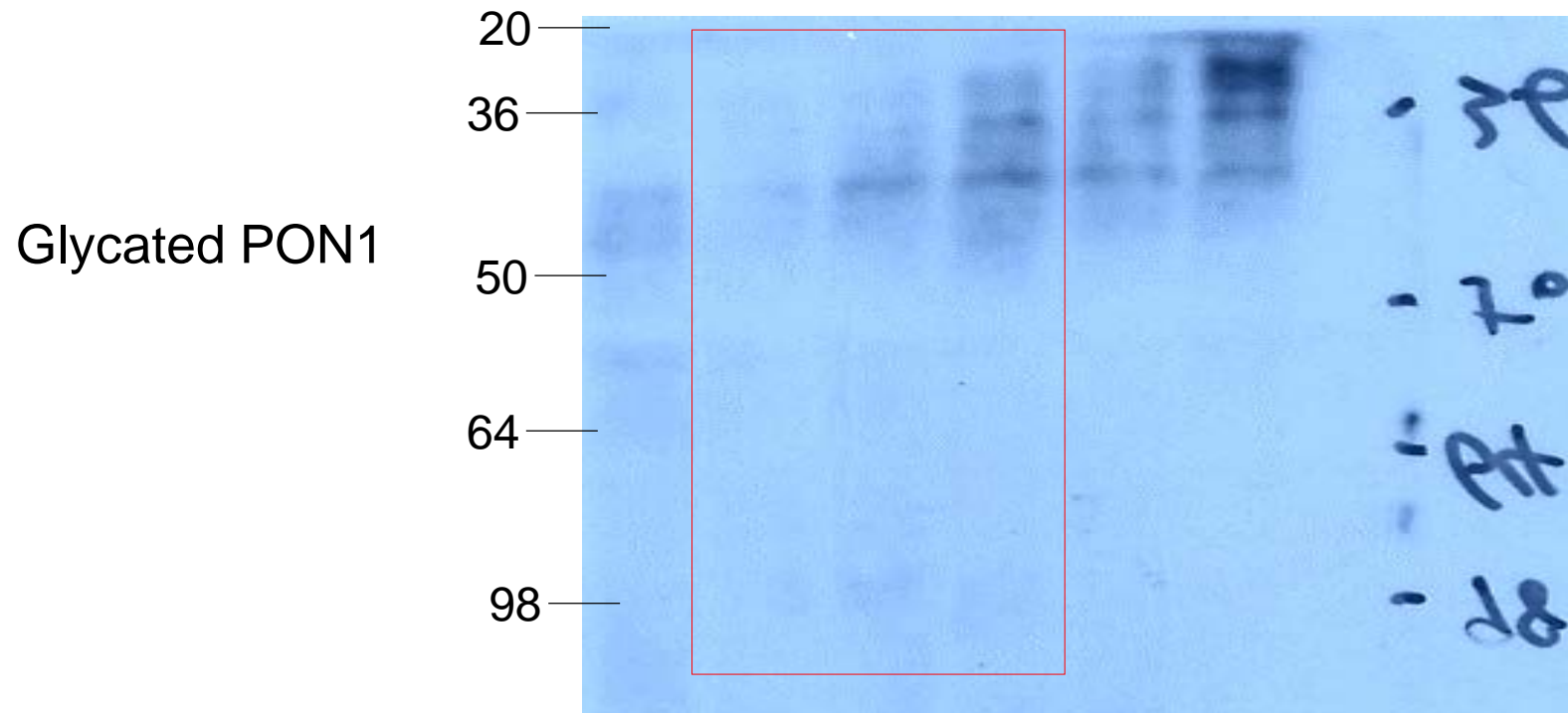
**Supplementary Figure S7.** Full blots for blots shown in Figure 2G.

**Supplementary Figure S8.** Full blots for blots shown in Figure 2G.

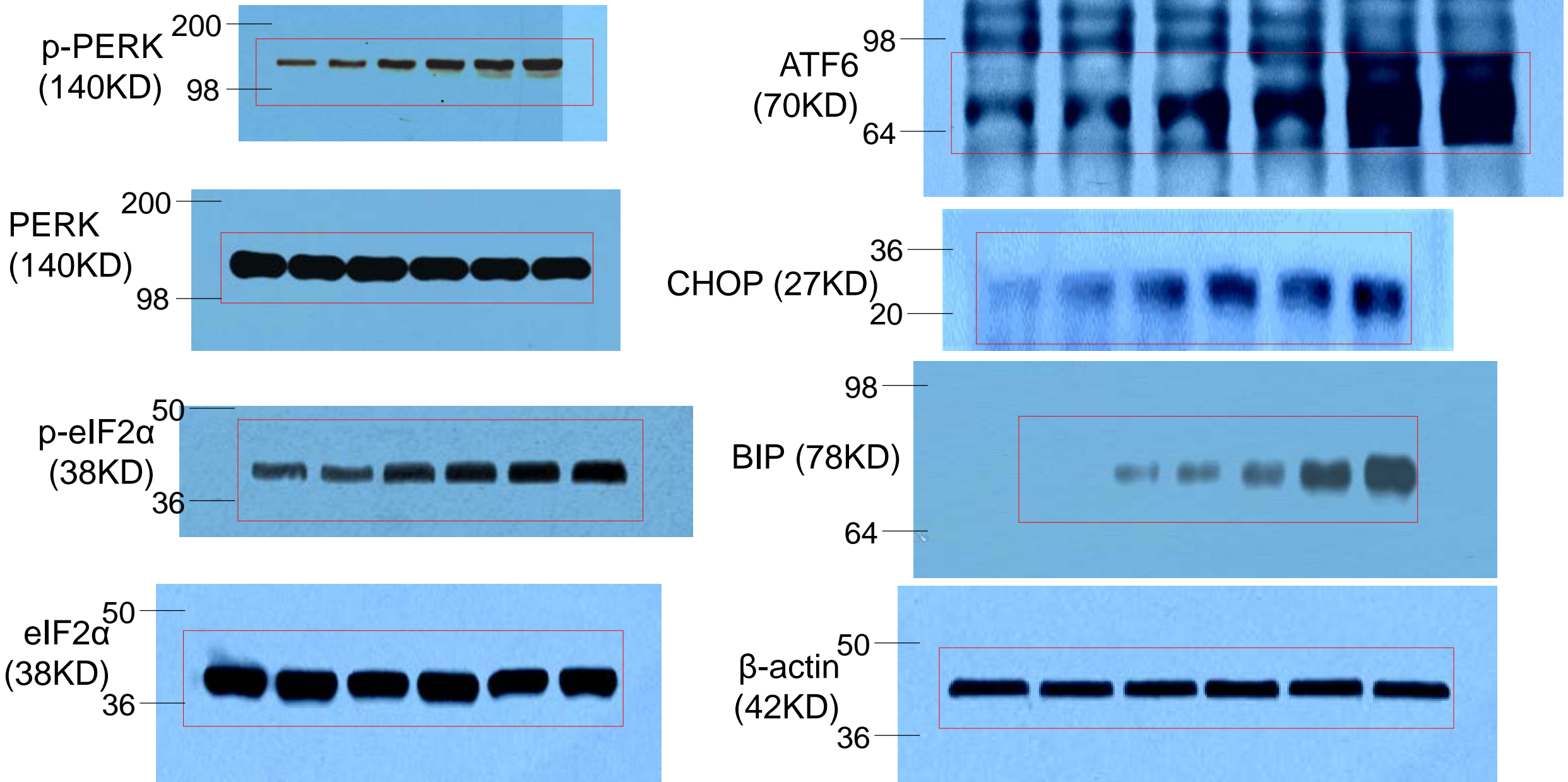
**Supplementary Figure S9.** Full blots for blots shown in Figure 3B.

**Supplementary Figure S10.** Full blots for blots shown in Figure 3C.

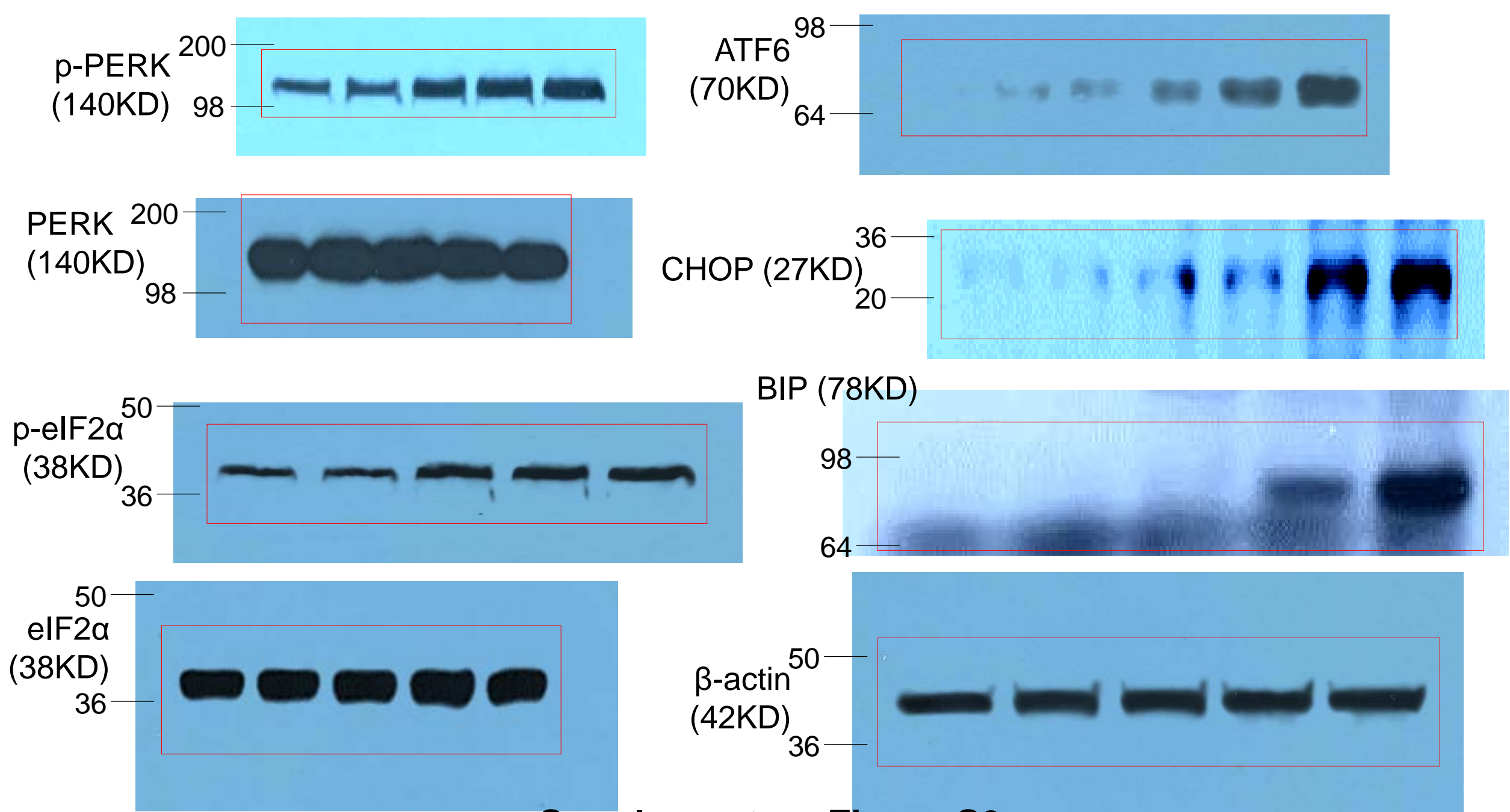
**Supplementary Figure S11.** Full blots for blots shown in Figure 5D.



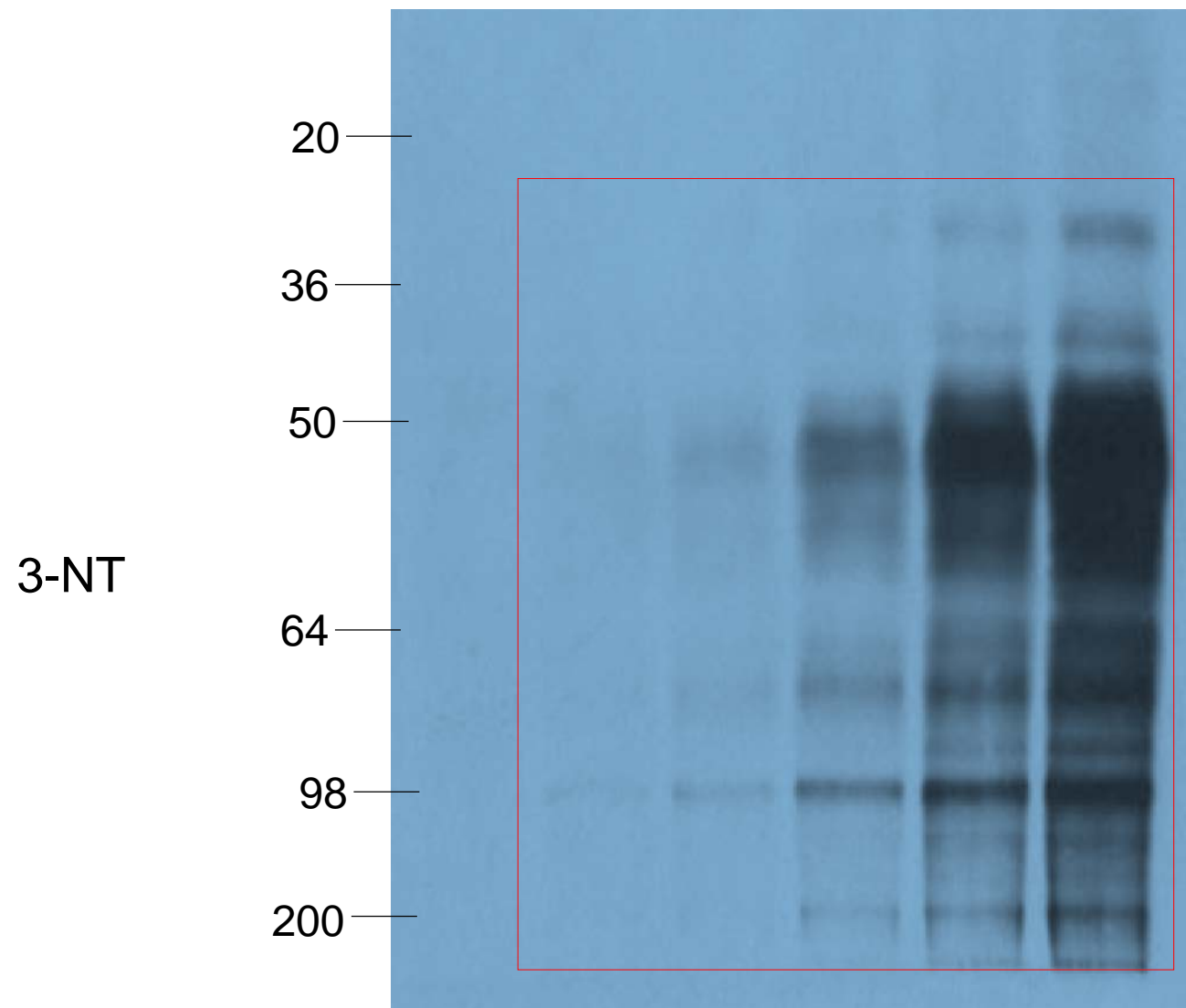
**Supplementary Figure S1**



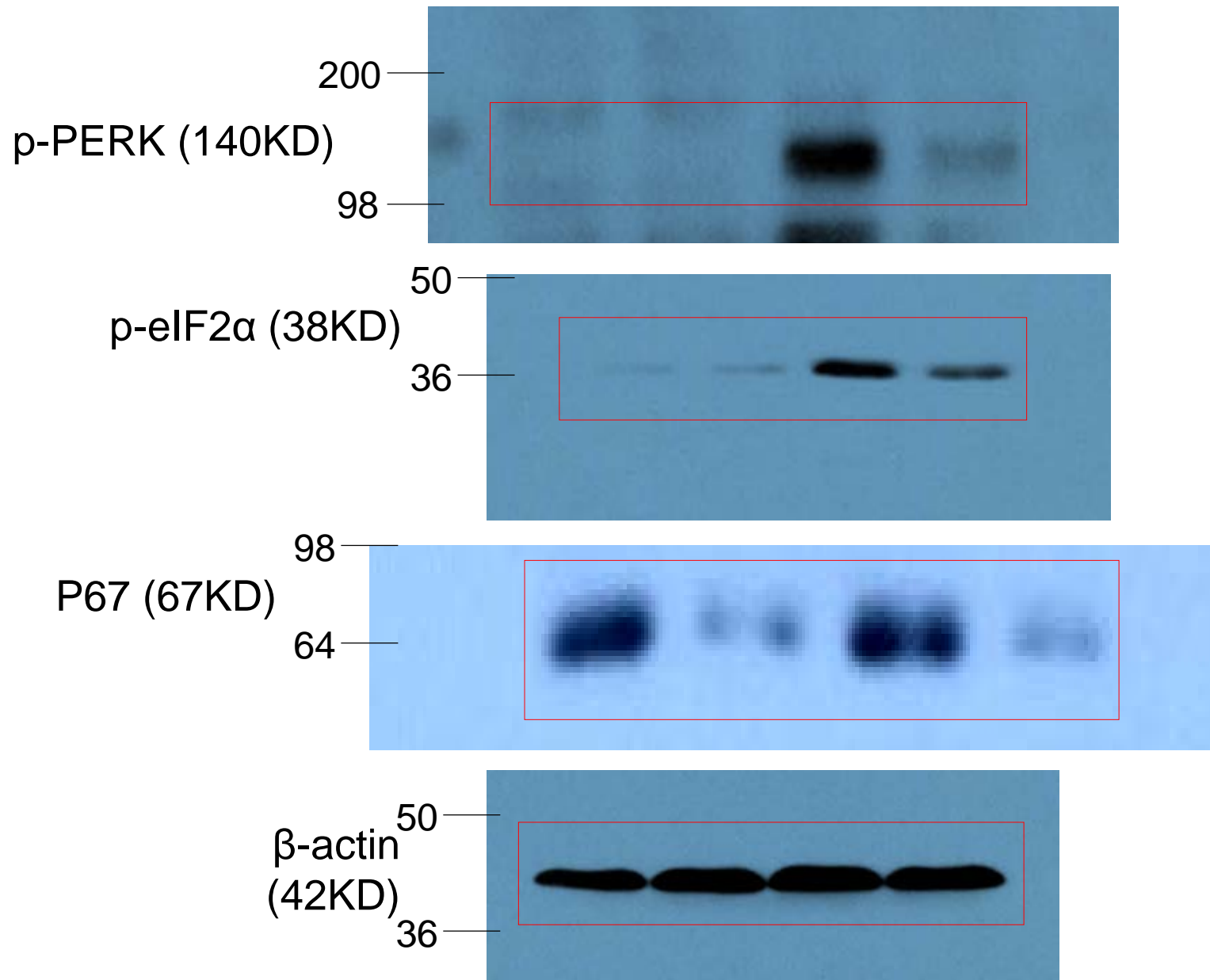
**Supplementary Figure S2**



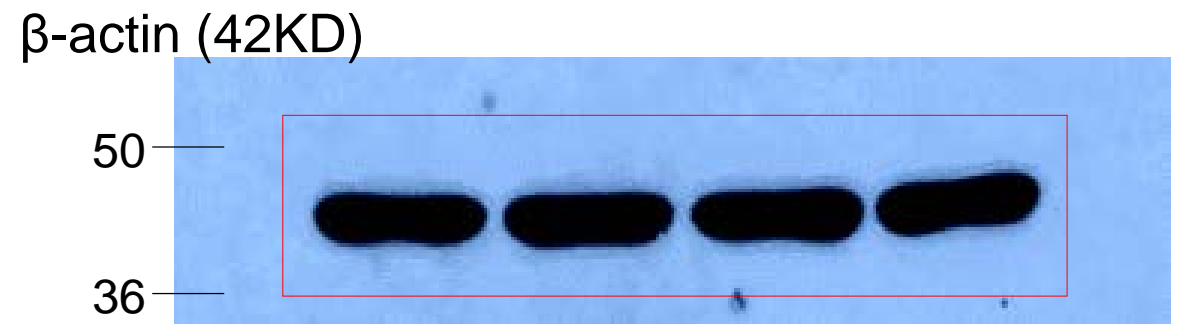
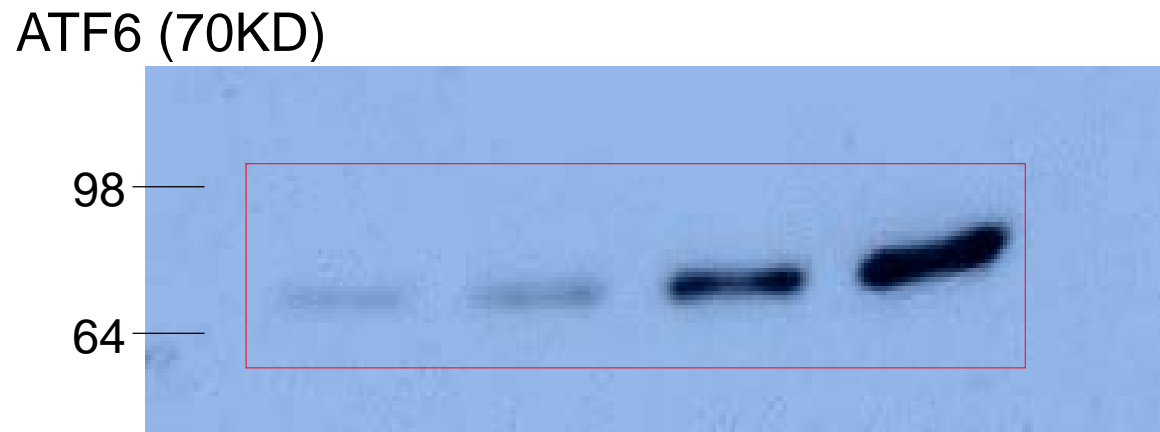
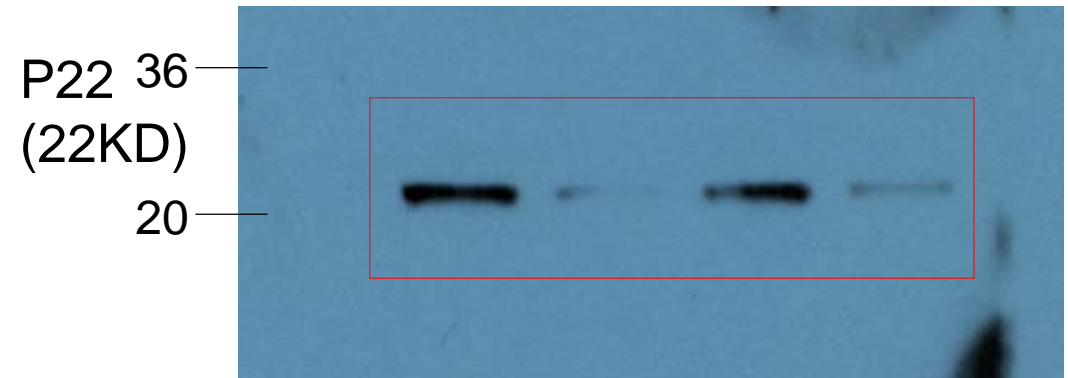
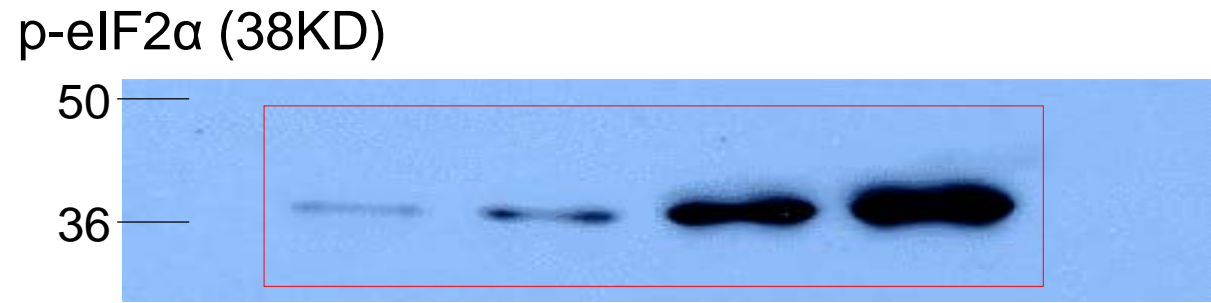
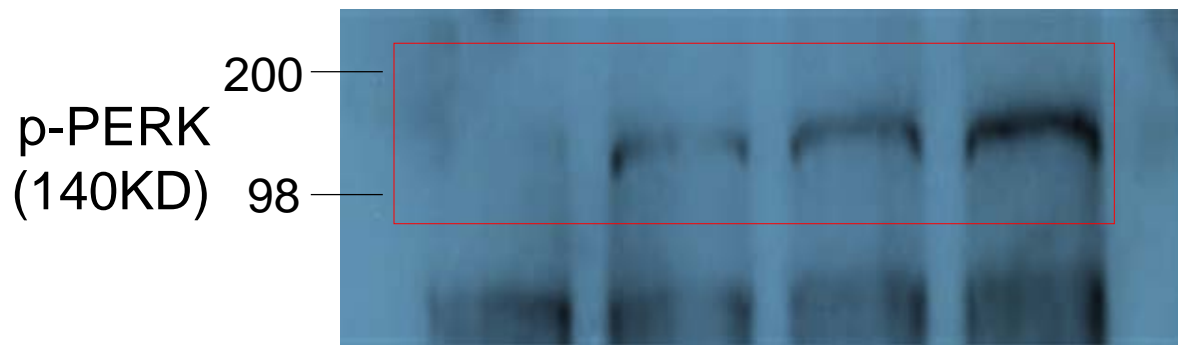
**Supplementary Figure S3**



**Supplementary Figure S4**

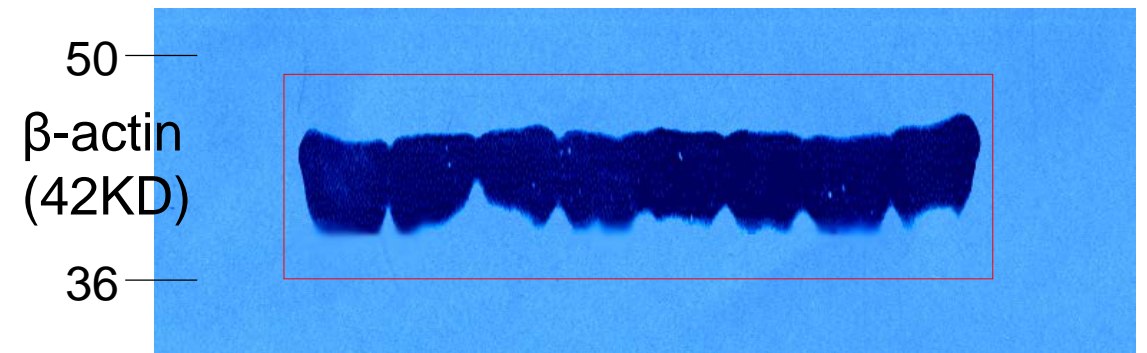
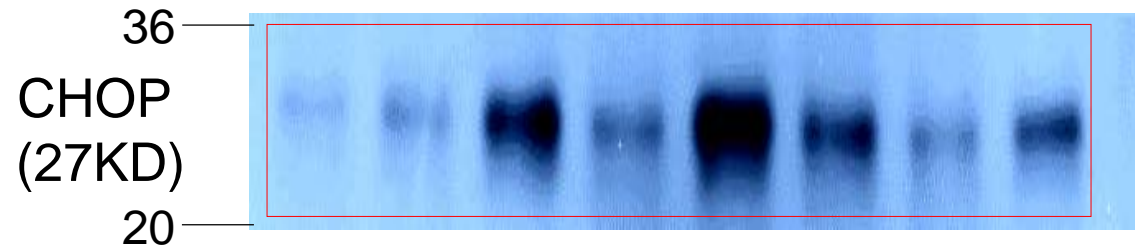
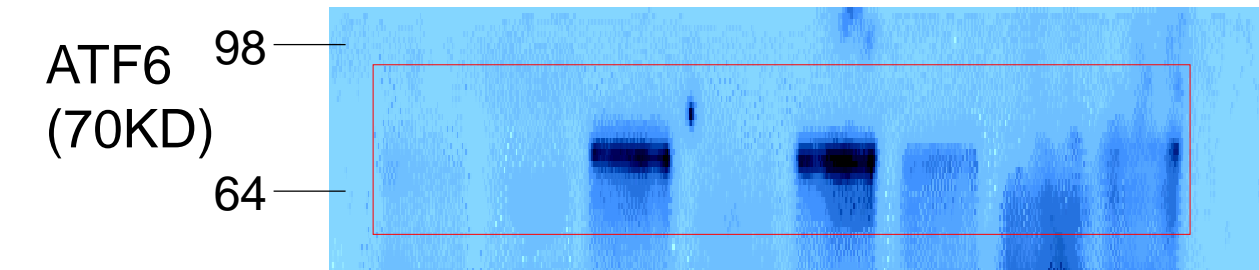
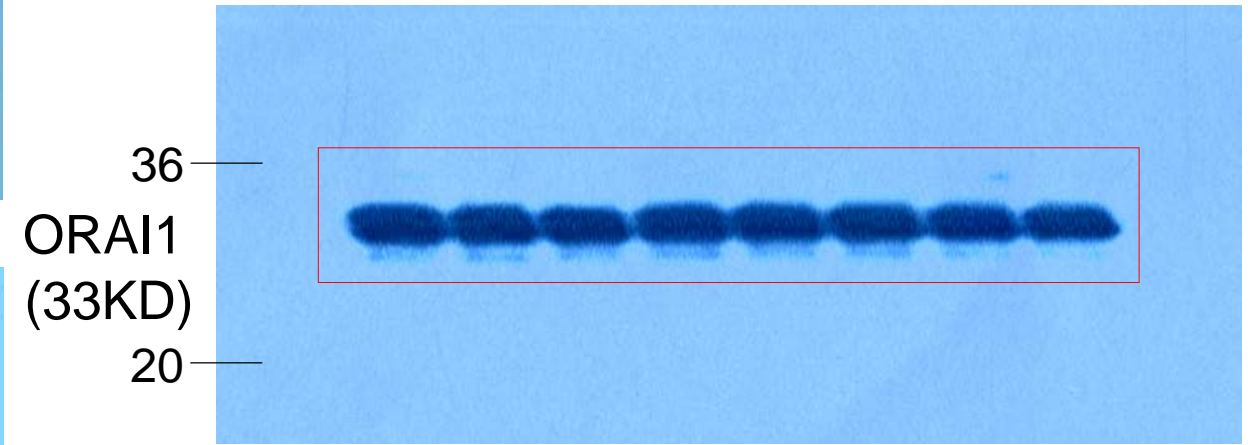
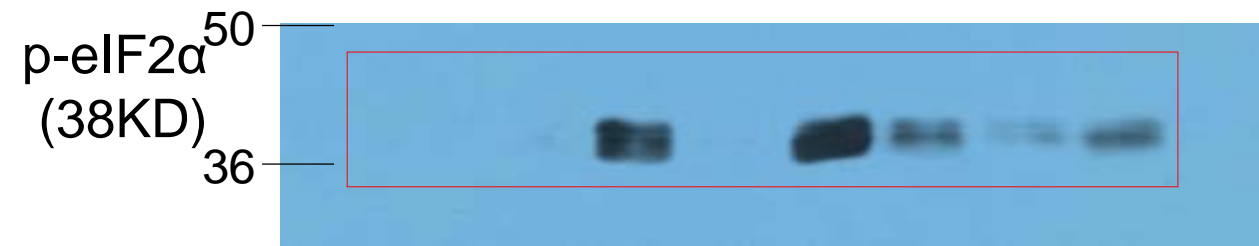
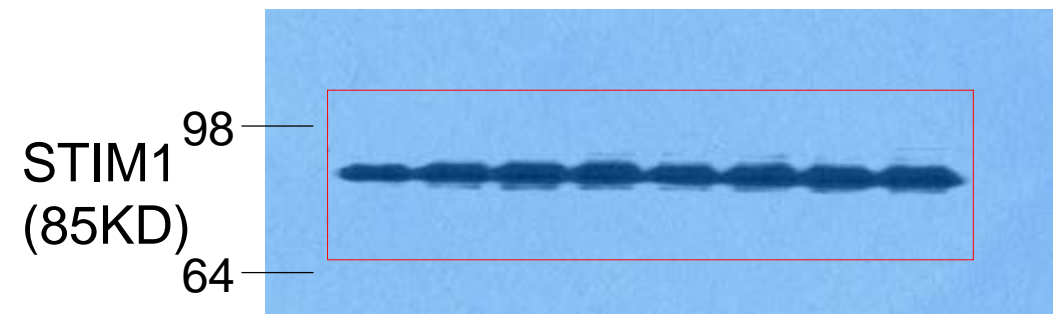
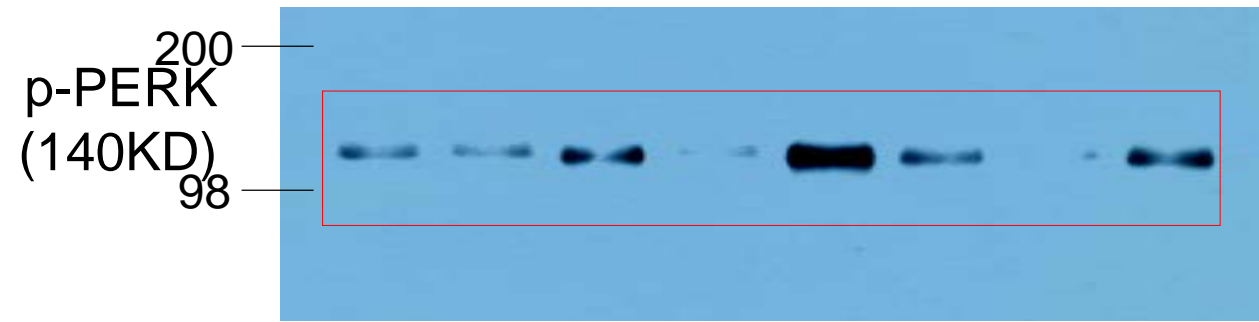


**Supplementary Figure S5**

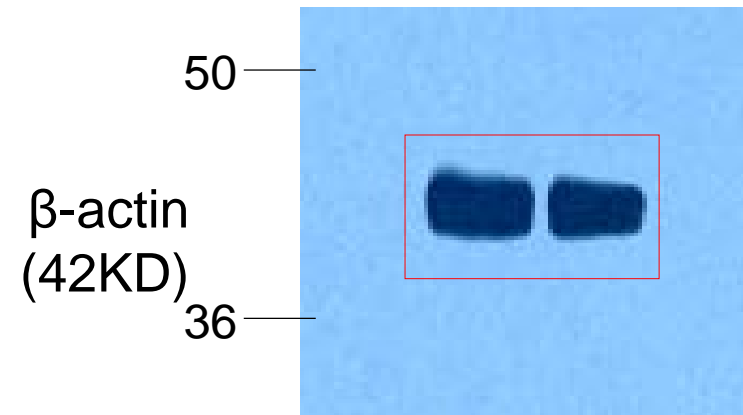
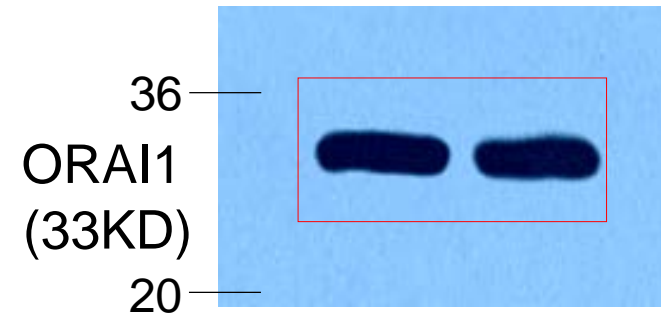
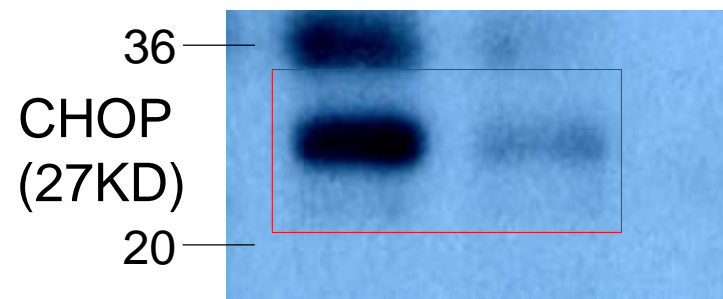
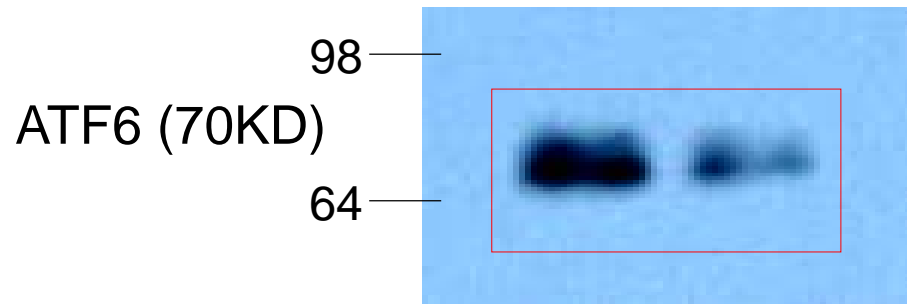
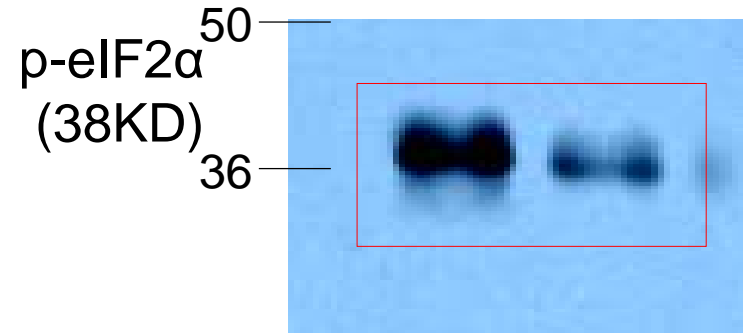
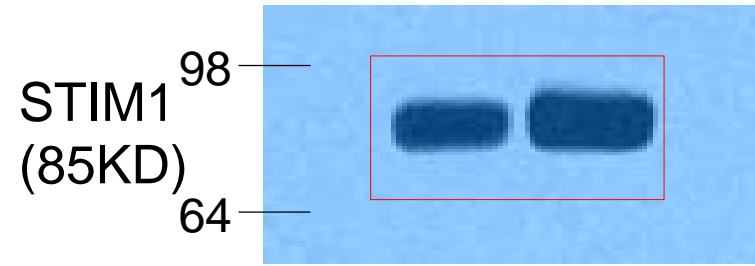
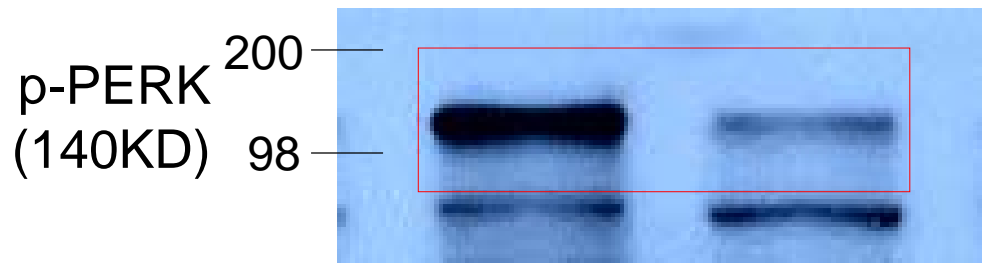


**Supplementary Figure S6**

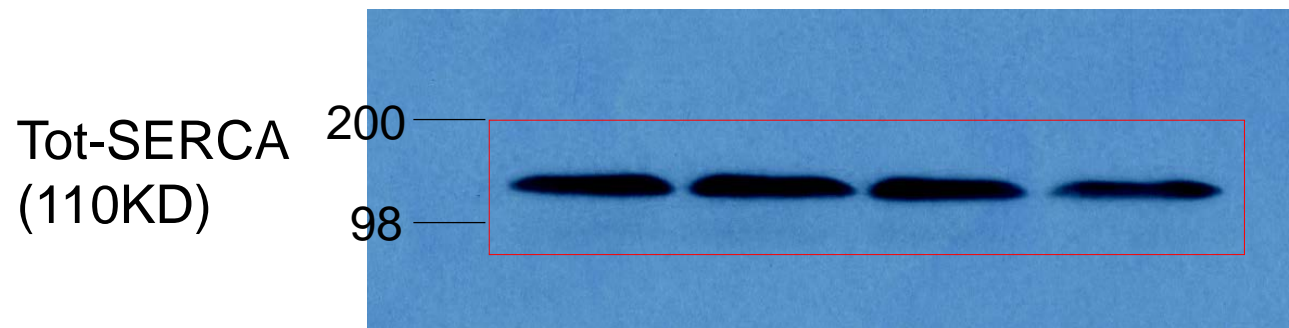
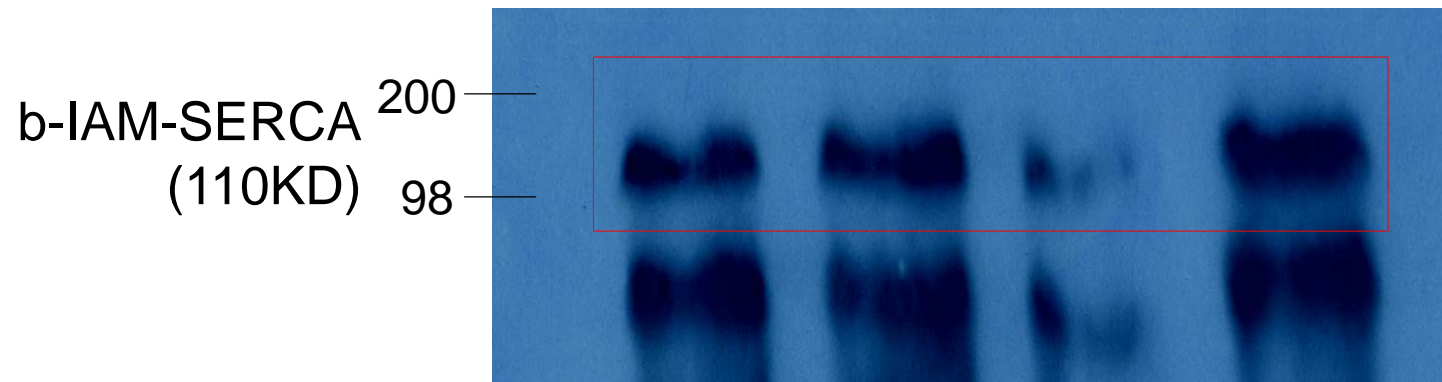




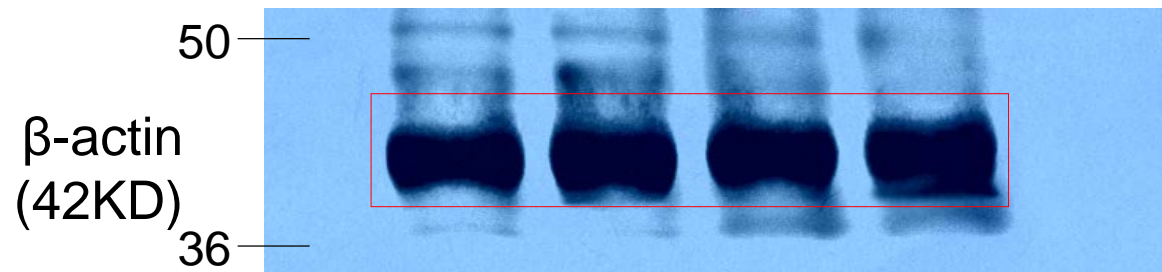
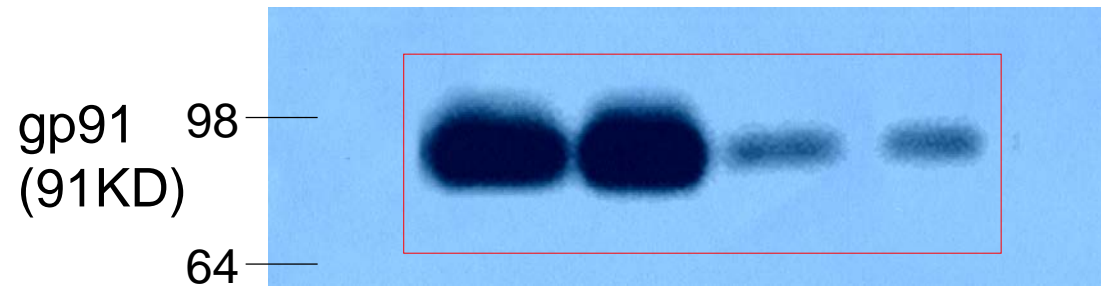
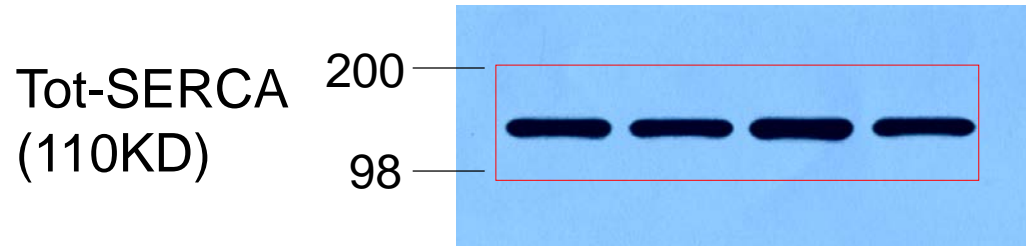
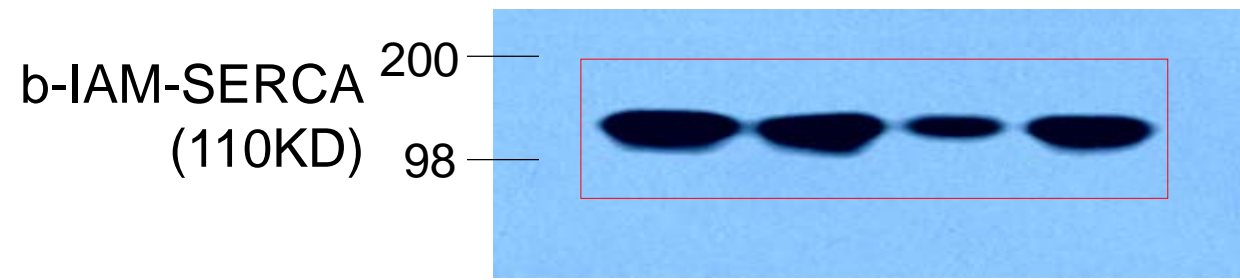
**Supplementary Figure S7**



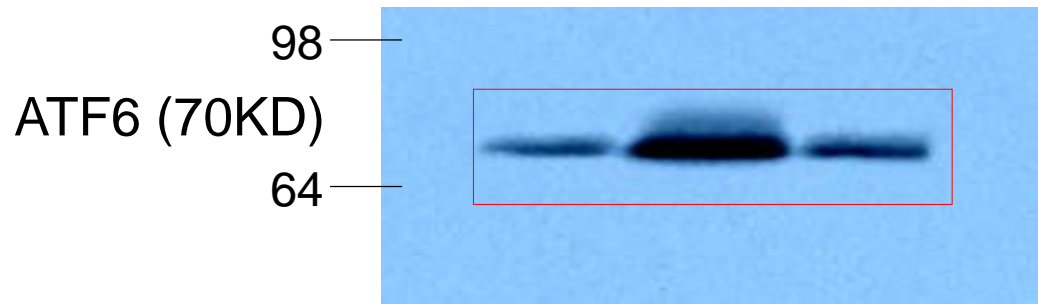
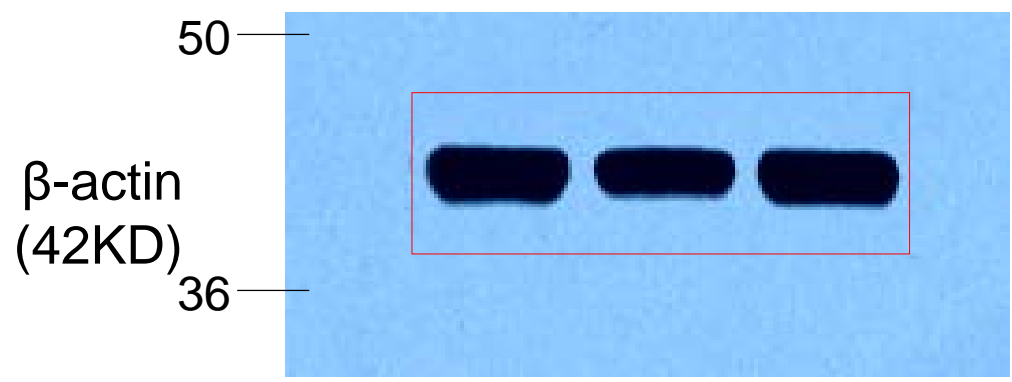
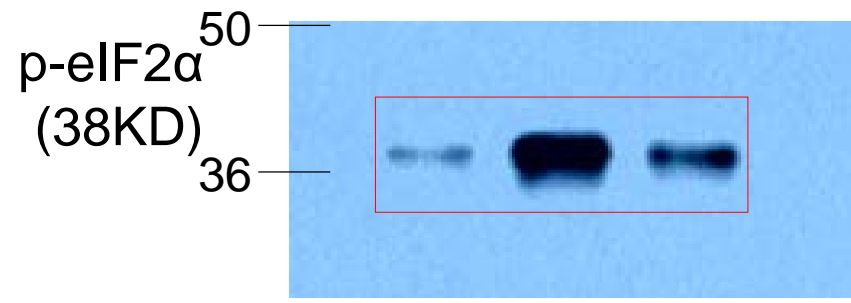
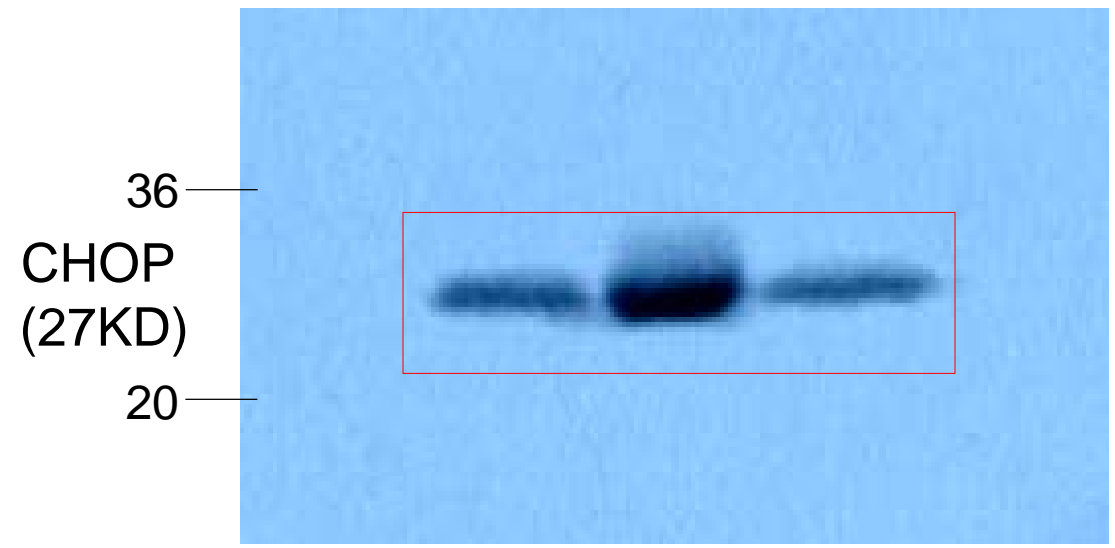
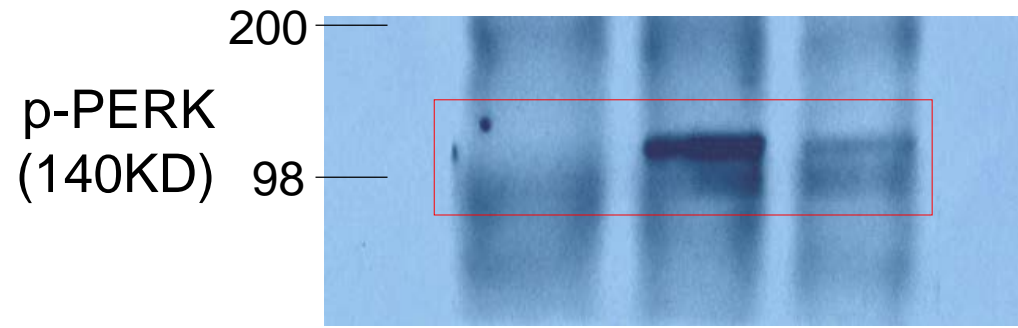
**Supplementary Figure S8**



**Supplementary Figure S9**



**Supplementary Figure S10**



**Supplementary Figure S11**