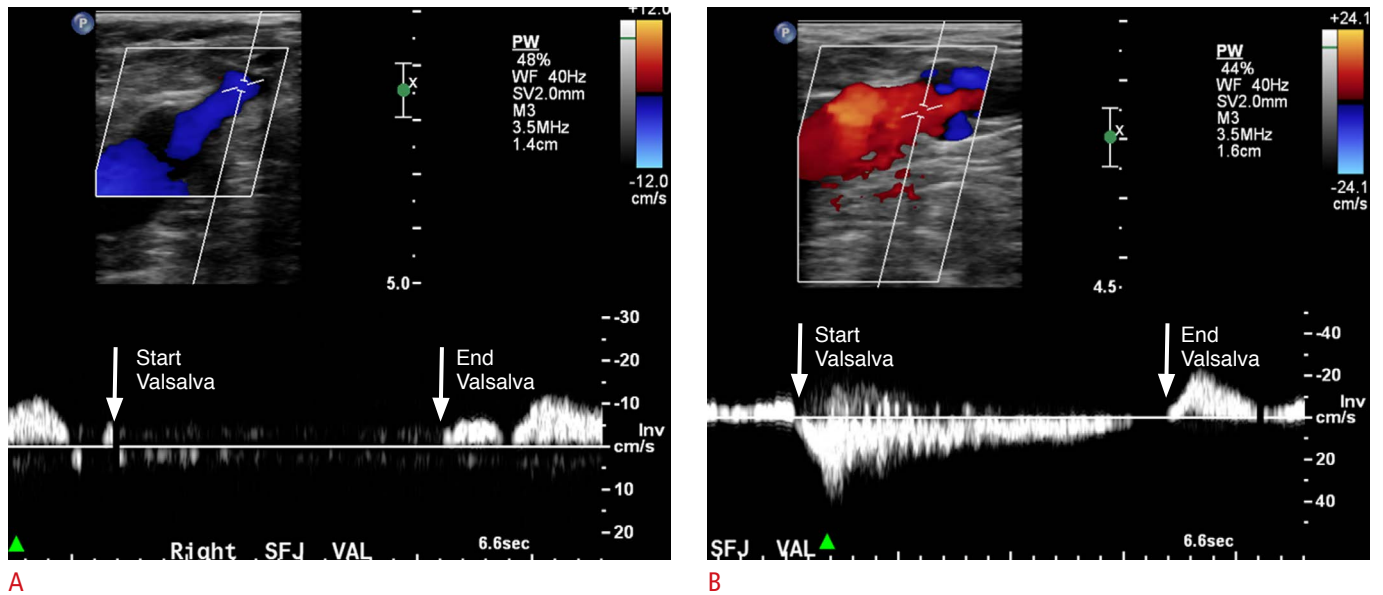


**Supplementary Fig. 1.** Transverse ultrasonography of an 88-year-old man with a pulmonary embolism. The patient shows duplication of the popliteal vein and thrombosis (arrowheads) in one of the popliteal lumens. On the compression view, the nonthrombosed lumen shows complete obliteration (arrows), while the thrombosed lumen is not fully compressed (open arrows).



**Supplementary Fig. 2.** Competent (A) and incompetent (B) saphenofemoral junction. **A.** After initiation of the Valsalva maneuver, there was no retrograde flow in the proximal great saphenous vein. **B.** In contrast, retrograde flow that persisted over 3 seconds was observed during the Valsalva maneuver, which suggests abnormal function of the terminal valve.