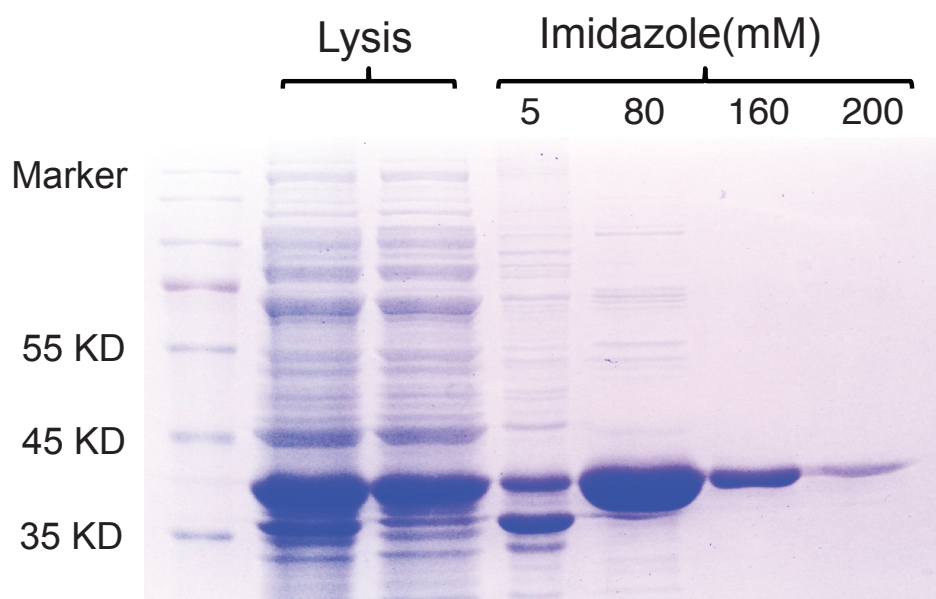


A



B

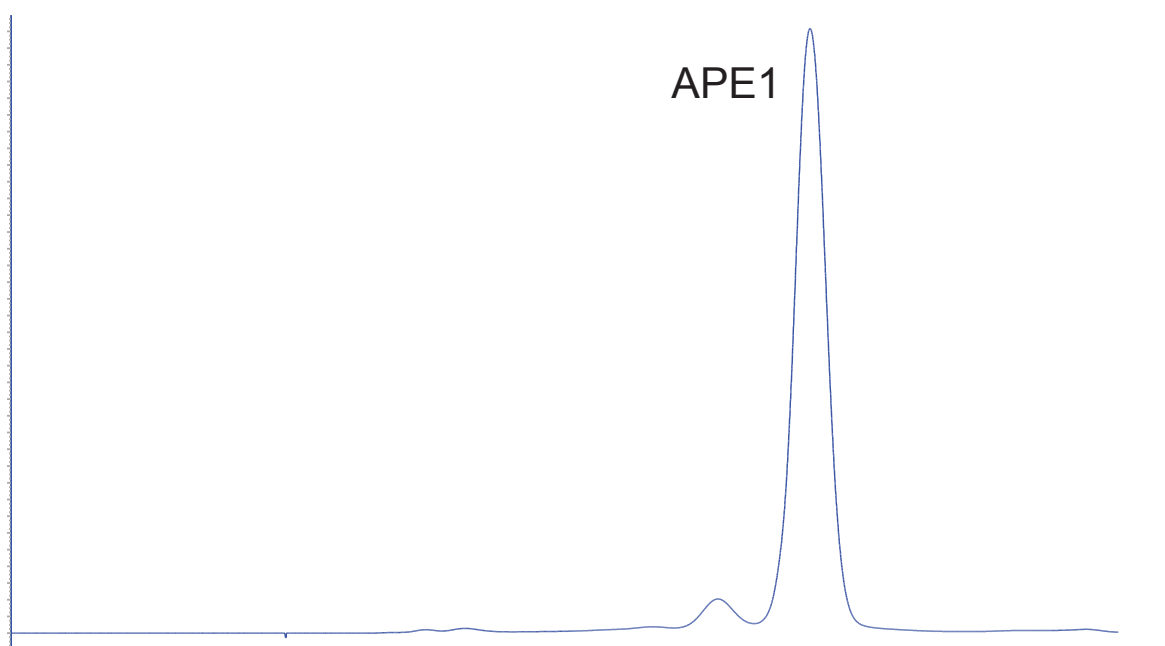


Fig. S7. Purification and purity of APE1 protein used in the study. (A) His-tagged APE1 was expressed in *E. coli*, purified with Ni²⁺-NTA-resin and eluted with buffer containing imidazole. (B) HPLC spectrum of obtained APE1 to show purify of APE1 used in the DSF, CD, SPR and EMSA assays.