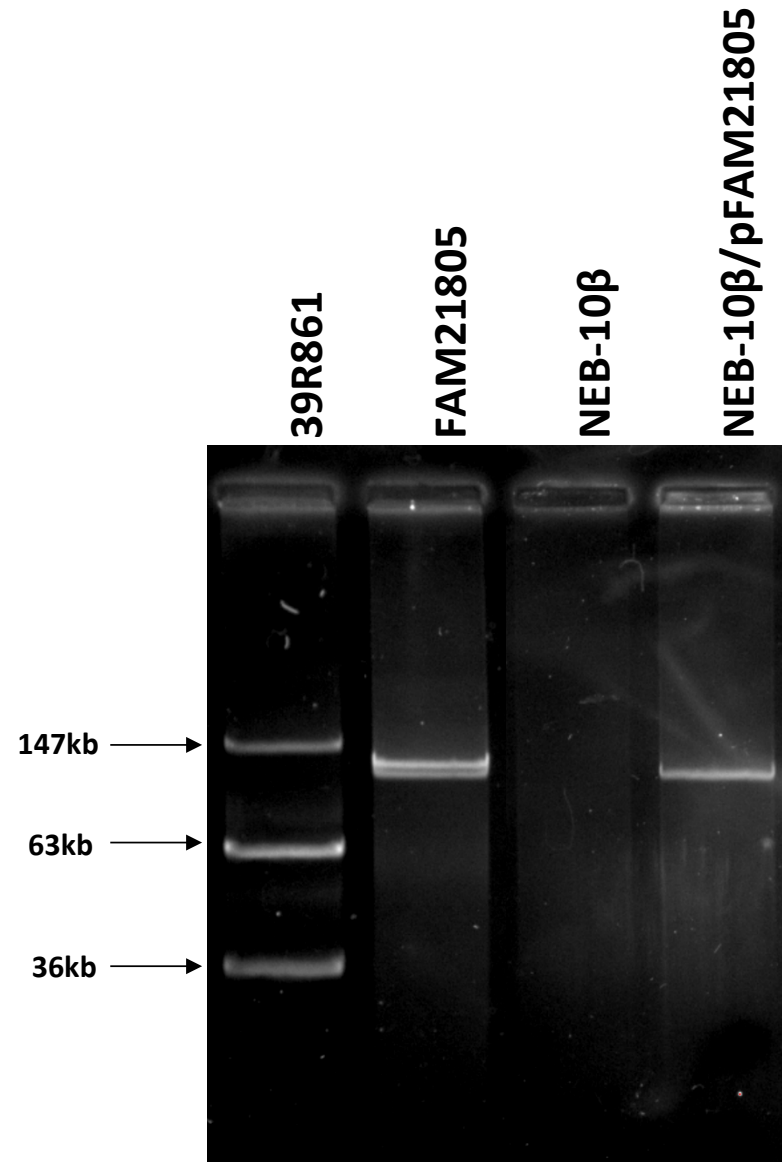


# Supplementary Figure 1



**Suppl. Fig. 1.** Gel electrophoresis of plasmids purified from *E. coli* strain 39R861 (reference with plasmids of known depicted sizes), FAM21805 (two plasmids), laboratory *E. coli* strain NEB-10 $\beta$  and NEB-10 $\beta$  with pFAM21805 inserted by electroporation.