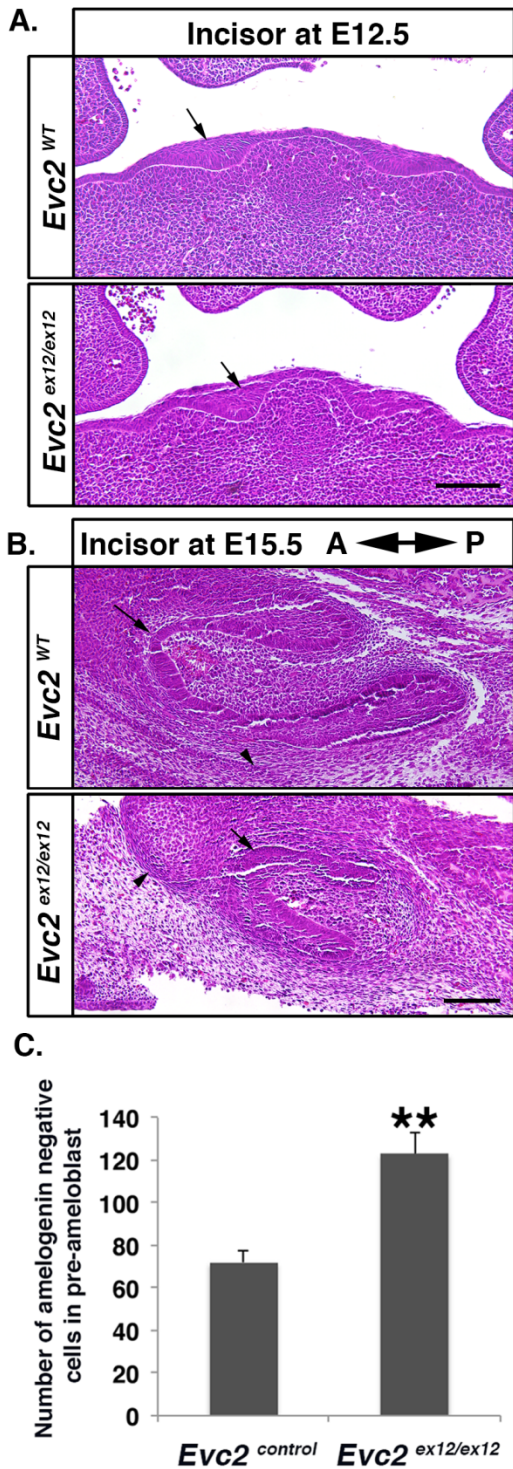


# Loss of Function of *Evc2* in Dental Mesenchyme Leads to Hypomorphic Enamel

H. Zhang, H. Takeda, T. Tsuji, N. Kamiya, T. Kunieda, Y. Mochida, and Y. Mishina

## Appendix



**Appendix Figure.** A. Frontal view of the embryonic head at E12.5 from controls and *Evc2* mutants. Arrows indicate the thickened dental epithelium during initiation of incisor development.

Scale bar: 200  $\mu$ m.

B. Sagittal view of bell stage incisor from controls and *Evc2* mutants at E15.5 indicated not overt differences in incisors. Arrows indicate bell stage incisors. Arrowheads indicate vestibular lamina. Scale bar: 200um.

C. Quantification of amelogenin negative cells in Fig2 D. n=4, \*\*, p<0.01.