

## Supplementary data

Table 1. Summary of the fast-track protocol that was used

<ul style="list-style-type: none"> <li>• Preoperative education</li> <li>• Low-dose spinal anesthesia</li> <li>• Standardized protocol for pain medication</li> <li>• Opioid medication only on request (rescue medication)</li> <li>• No drains</li> <li>• No standard urine catheters</li> <li>• Start rehabilitation and mobilization on day of surgery</li> <li>• Checking of fulfillment of discharge criteria twice a day</li> <li>• Optimization of the aftercare if needed (home care, hotel with care facilities)</li> </ul>
---

Table 2. English translation of general questions

<p><b>Pain</b></p> <ul style="list-style-type: none"> <li>• Give an average pain score between 0 and 10, in which 0 is no pain and 10 is the worst possible pain.</li> </ul> <p><b>Medication</b></p> <ul style="list-style-type: none"> <li>• What medication and which doses did you use today?</li> </ul> <p><b>Sleep</b></p> <ul style="list-style-type: none"> <li>• How did you sleep last night?</li> </ul> <p><b>Physiotherapy</b></p> <ul style="list-style-type: none"> <li>• Did you have physiotherapy this week?</li> <li>• What kind of treatment did you receive?</li> </ul> <p><b>Wound</b></p> <ul style="list-style-type: none"> <li>• Did the wound leak?</li> <li>• Did you change the bandage?</li> <li>• Did you experience problems/anxiety regarding changing of the bandage?</li> </ul> <p><b>Home care service</b></p> <ul style="list-style-type: none"> <li>• Did you use the home care service this week?</li> </ul> <p><b>Thrombosis injections</b></p> <ul style="list-style-type: none"> <li>• Did you experience problems with the thrombosis prophylaxis injection?</li> </ul> <p><b>Complications</b></p> <ul style="list-style-type: none"> <li>• Did you contact a doctor this week for your operated hip?</li> </ul>
--

Walking devices indoors (%)

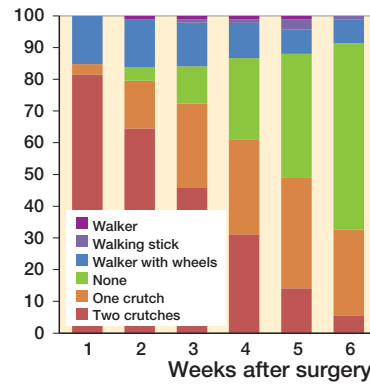


Figure 3. The use of walking devices indoors.

Walking devices out of doors (%)

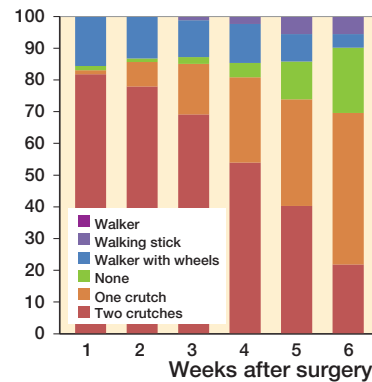


Figure 4. The use of walking devices out of doors.

Mean ICOAP total score

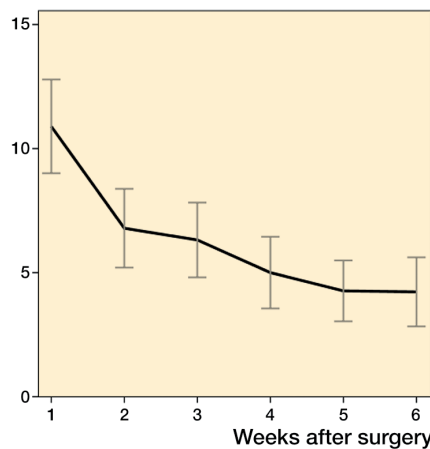


Figure 2. Mean ICOAP total score, week 1 to week 6 after discharge. Error bars show 95% CI.

Mean OHS score

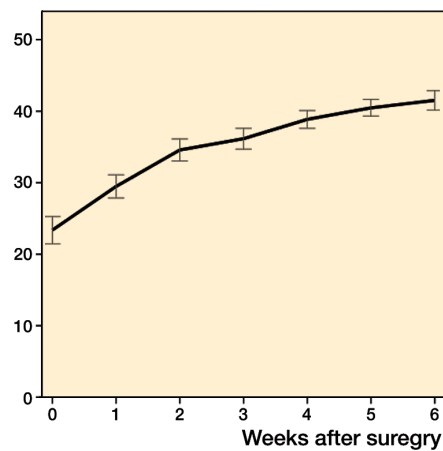


Figure 5. Mean OHS score preoperatively to week 6 after discharge. Error bars show 95% CI.

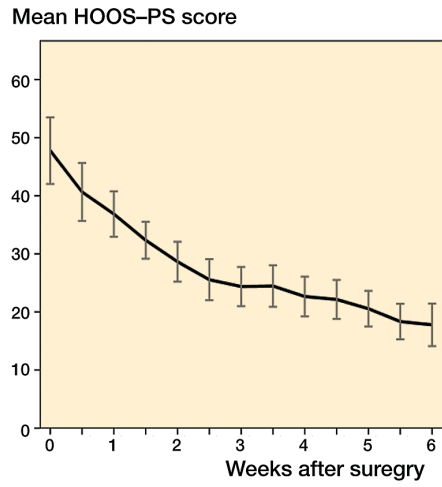


Figure 6. Mean HOOS-PS score preoperatively to week 6 after discharge, scored twice weekly. Error bars show 95% CI.

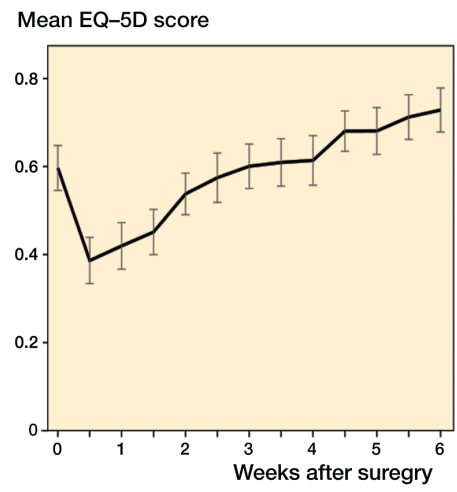


Figure 7. Mean EQ-5D score preoperatively to week 6 after discharge, scored twice weekly. Error bars show 95% CI.