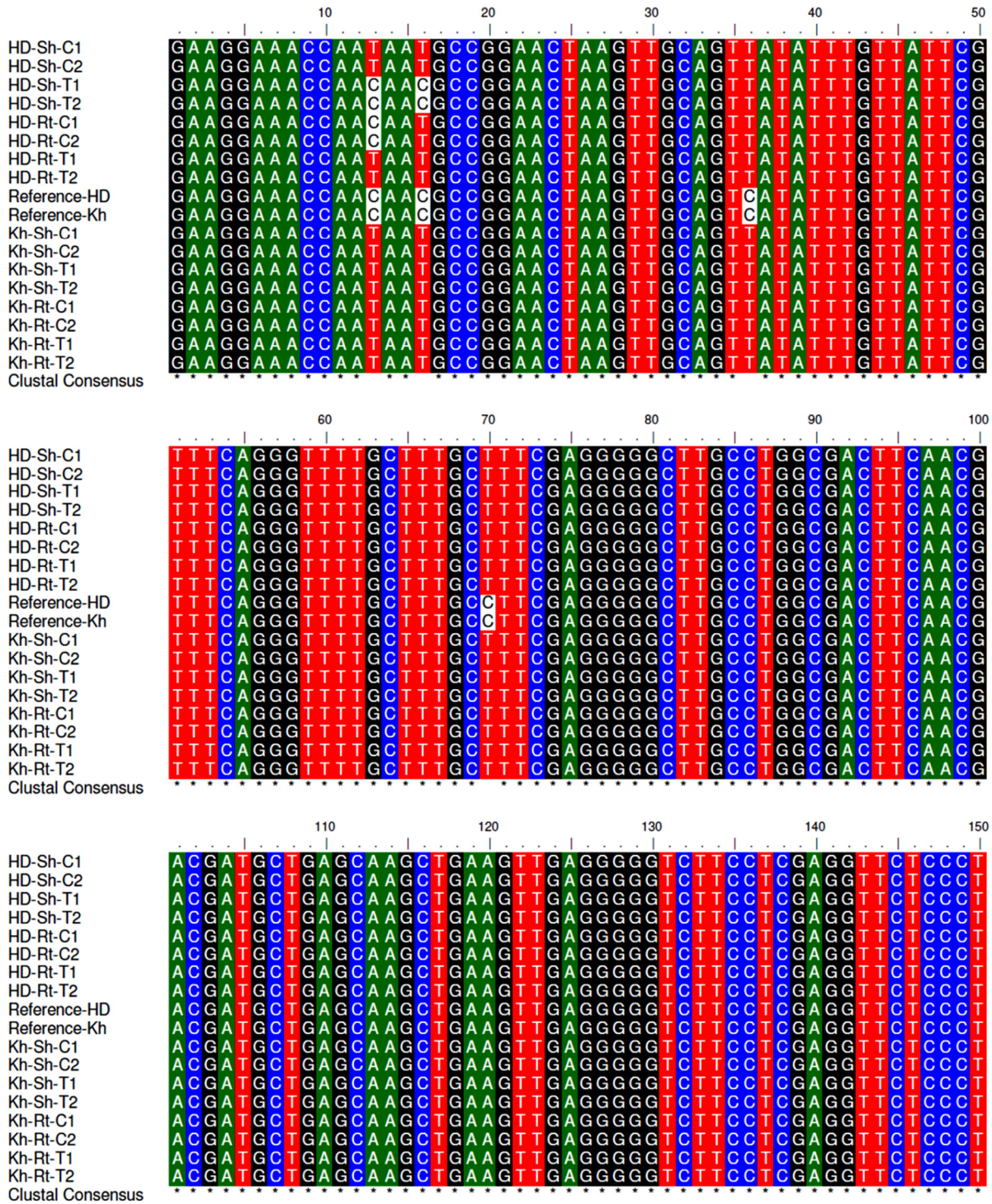
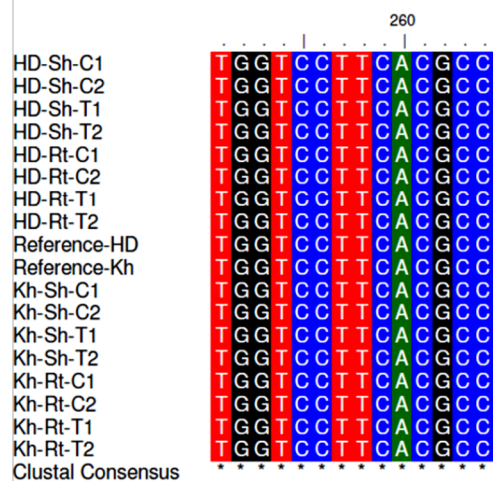
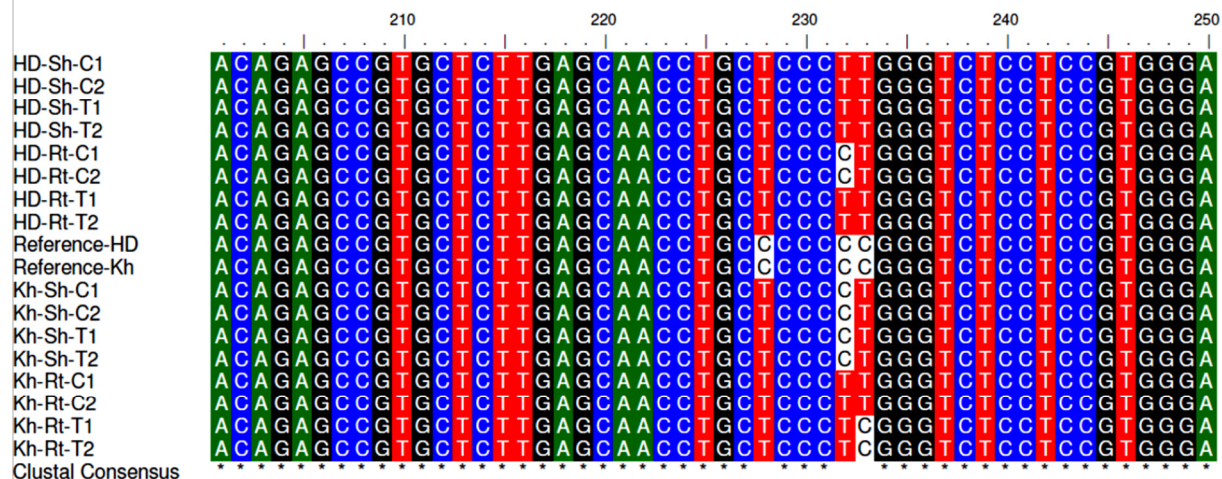
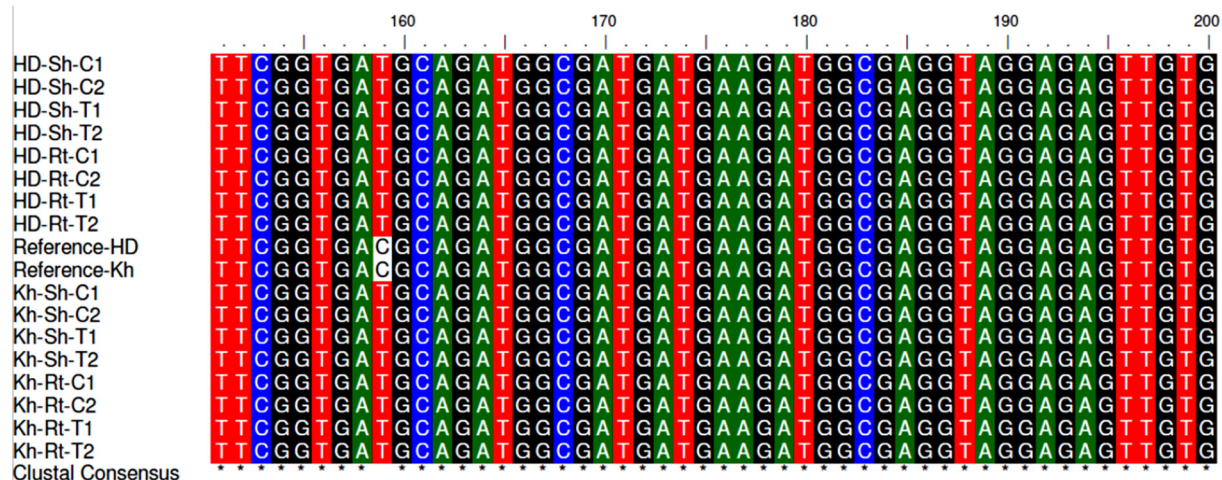


Supplementary Figure S3: Alignment of bisulfite sequences of *TaHKT1;4* gene along with the reference (unmodified) DNA sequences in shoot (Sh) and root (Rt) of Kharchia-65 (Kh) and HD-2329 (HD) grown under control (C) and salt stress (T) conditions.





Bisulfate sequences in duplicate only were used for alignment.