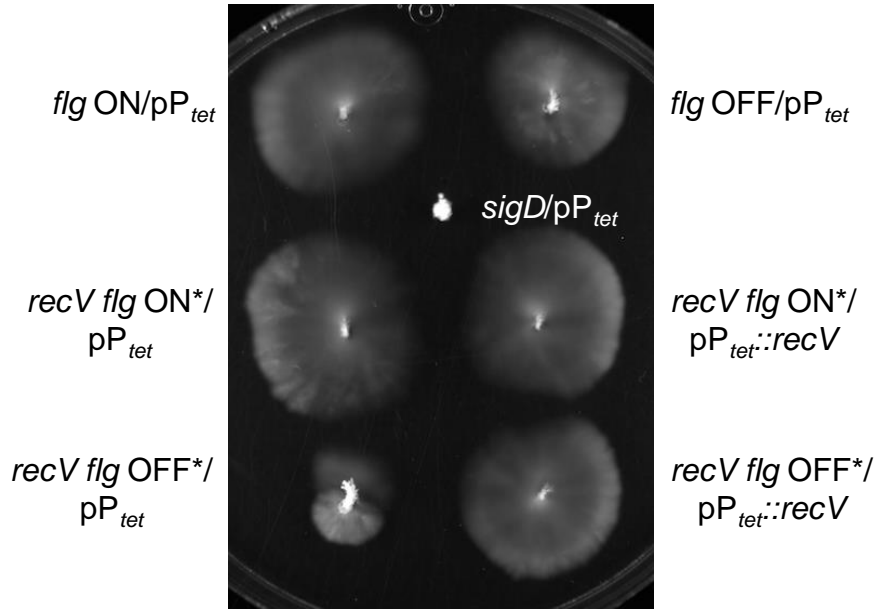
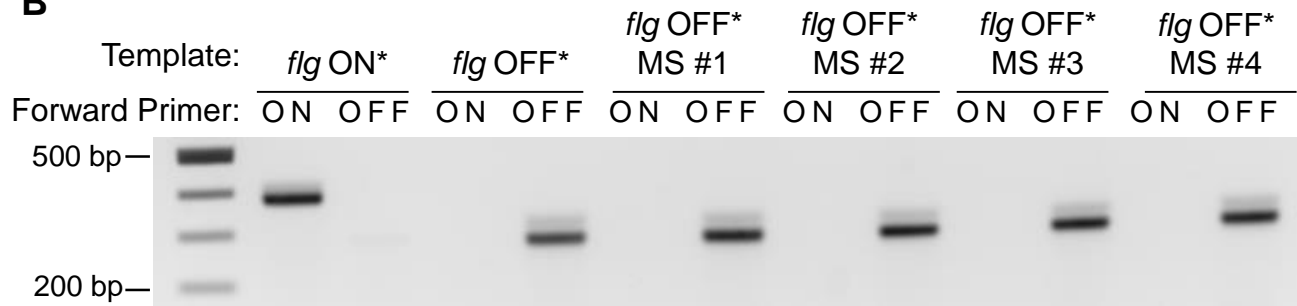


**A****B**

**S10 Fig. Isolation of motile *recV flg OFF\** suppressor mutants.** (A) Representative image of a motility assay after 72 hours, with *flg ON/pP<sub>tet</sub>* (RT1615), *flg OFF/pP<sub>tet</sub>* (RT1617), *sigD/pP<sub>tet</sub>* (RT1690), *recV flg ON\*/pP<sub>tet</sub>* (RT1715), *recV flg ON\*/pP<sub>tet</sub>::recV* (RT1716), *recV flg OFF\*/pP<sub>tet</sub>* (RT1691), and *recV flg OFF\*/pP<sub>tet</sub>::recV* (RT1697). Strain numbers are listed in parentheses. The *recV flg OFF\*/pP<sub>tet</sub>::recV* (RT1691) showed motility upon this prolonged incubation. (B) Orientation-specific PCR assay of the flagellar switch from *recV flg ON\**, *recV flg OFF\**, and three motile suppressor (MS) mutants of *recV flg OFF\** (pRT1719 – RT1724). Image representative of two independent experiments with eight biological replicates of motile suppressor mutants of *recV flg OFF\**.