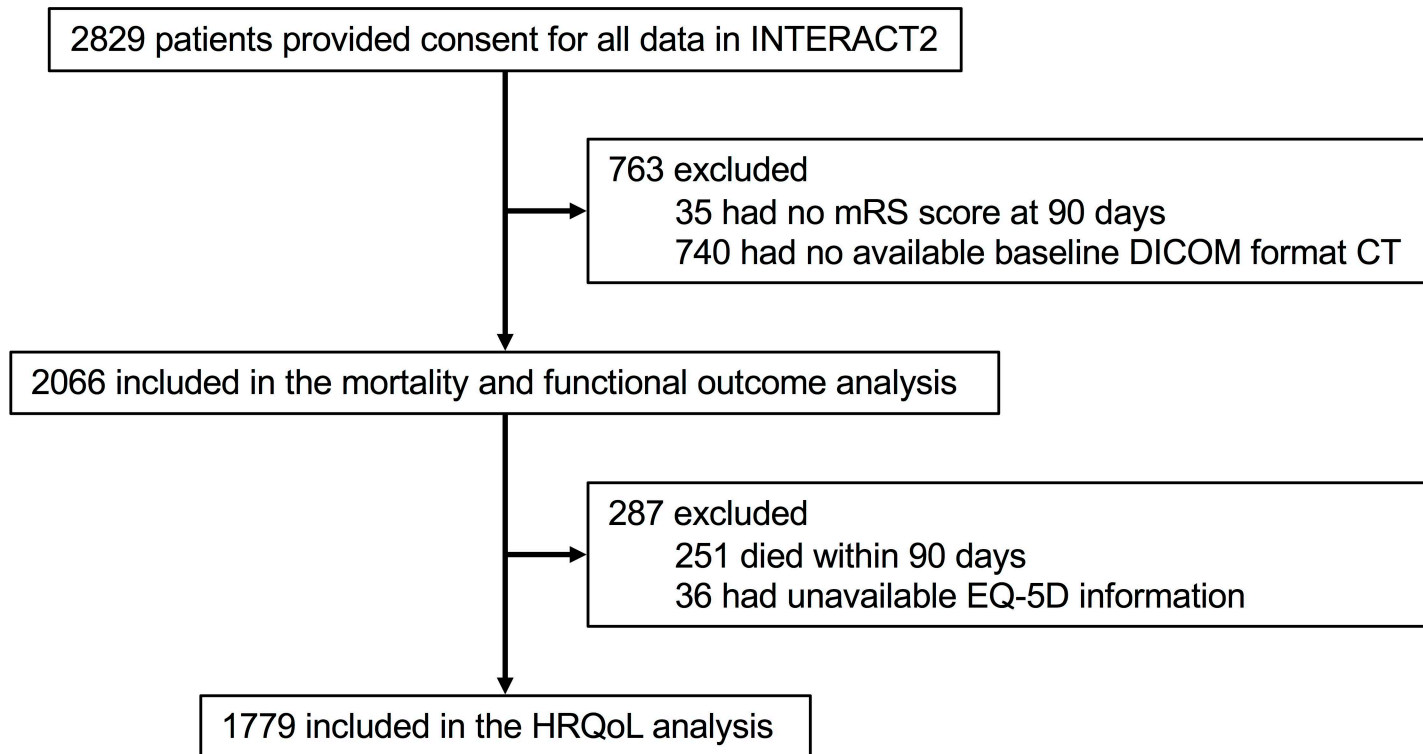


Figure e-1. Patient selection flow chart



Abbreviations: INTERACT2 = the main phase of Intensive Blood Pressure Reduction in Acute Cerebral Hemorrhage Trial; mRS = modified Rankin Scale; DICOM = Digital Imaging and Communication in Medicine; CT = computed tomography; EQ-5D = European Quality of Life Scale; HRQoL = Health-related Quality of Life.