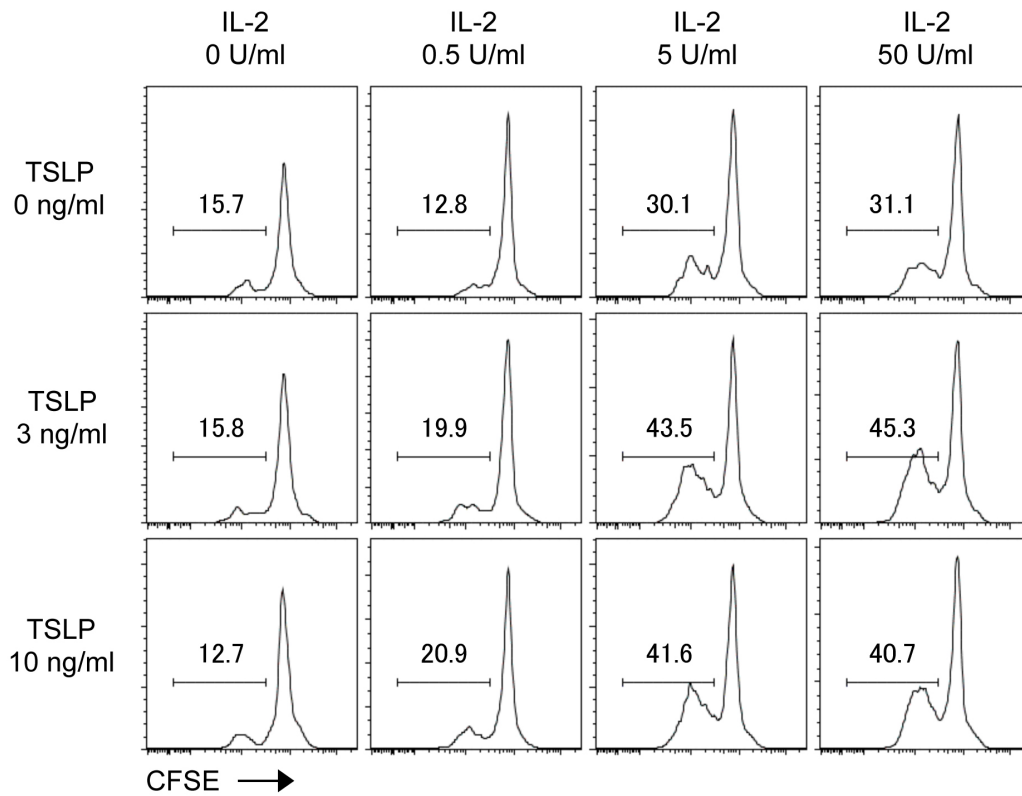
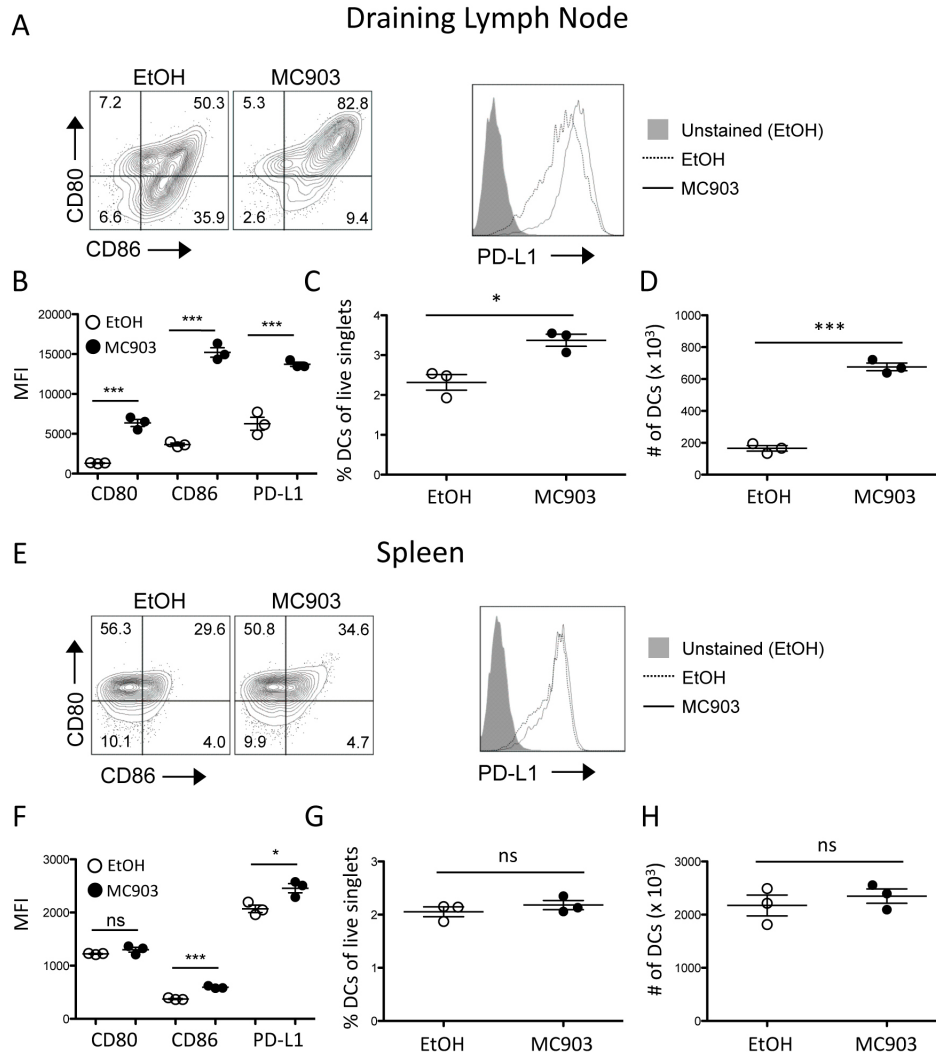


Supplementary Figure 1



Supplementary Figure 1. Physiologically relevant concentrations of TSLP stimulate Treg proliferation *in vitro*. CFSE-labeled WT Tregs were co-cultured with dendritic cells for 96 hours with the indicated concentration of TSLP and/or IL-2 and analyzed by flow cytometry. The % of CFSE¹⁰ Tregs is indicated in the histogram plots.

Supplementary Figure 2



Supplementary Figure 2. The number and phenotype of DCs in draining lymph node and spleen of MC903-treated mice. (A) Representative plots and the (B) MFI plotted as mean \pm SEM ($n = 3$ mice/group) of CD80, CD86, and PD-L1 expression by draining lymph node and splenic (E, F) DCs from EtOH and MC903-treated mice at Day 4 is shown. (C) The fraction and (D) absolute number of DCs in the draining lymph node and spleen (G, H) from EtOH and MC903-treated mice at Day 4 are plotted. One representative of 3 independent experiments is shown.