

# THE LANCET

## Supplementary appendix

This appendix formed part of the original submission and has been peer reviewed. We post it as supplied by the authors.

Supplement to: Shiels MS, Chernyavskiy P, Anderson WF, et al. Trends in premature mortality in the USA by sex, race, and ethnicity from 1999 to 2014: an analysis of death certificate data. *Lancet* 2017; published online Jan 25. [http://dx.doi.org/10.1016/S0140-6736\(17\)30187-3](http://dx.doi.org/10.1016/S0140-6736(17)30187-3).

## **Supplemental Appendix Table of Contents**

**Page 2: Supplemental Methods**

**Page 4: Supplemental Table 1. Cause of death definitions based on ICD-10 codes.**

**Page 5: Supplemental Table 2: Estimated annual percentage change (APC) in all-cause mortality by age and sex in Canada, and England and Wales and by age, sex and race and ethnicity in the USA, 1999-2014**

**Page 10: Supplemental Table 3. Age-adjusted all-cause mortality rates in U.S. men and women by race/ethnicity, age group and calendar period, 1999-2014.**

**Page 13: Supplemental Table 4: Age-standardized mortality rates by race/ethnicity, sex, age group, calendar period and cause of death.**

**Page 29: Supplemental Table 5: ICD-10 codes for sub-categories of accidental deaths.**

**Page 31: Supplemental Figure 1. Birth cohort relative risks of mortality among 25-64 year-olds by sex in A) Canada, England/Wales, and the United States, and B) the United States by race and ethnicity.**

**Page 33: Supplemental Figure 2. Age-adjusted mortality rates for deaths due to accidental poisonings by sex and race/ethnicity among 25-49 year-olds during 2011-2014.**

## Supplemental Methods

The traditional age-period-cohort (APC) model represents expected mortality rates as a log-linear model with additive age, period, and cohort effects. Because cohort is collinear with age and period, APC models can be written in either the age-period cross-sectional form or the age-cohort longitudinal form.<sup>1</sup> In this paper, we use the latter specification, but the fitted rates are identical. Omitting the offset, the linear predictor can be expressed in scalar notation as:

$$\log(\mu_{apc}) = \beta_0 + \beta_a(a - \bar{a}) + \beta_c(c - \bar{c}) + \tilde{\alpha}_a + \tilde{\pi}_p + \tilde{\gamma}_c \quad (1)$$

In equation (1), the intercept  $\beta_0$  represents the log-rate centered at mean age  $\bar{a}$  and mean birth cohort  $\bar{c}$ ,  $(a - \bar{a})$  and  $(c - \bar{c})$  are the centered effects of age and birth cohort,  $\beta_a$  and  $\beta_c$  are the corresponding linear trend parameters, and  $\tilde{\alpha}_a$ ,  $\tilde{\pi}_p$ , and  $\tilde{\gamma}_c$  are the categorical age, period, and cohort deviations from linear trends. Deviation parameters must be constrained for identifiability, such that:  $\sum_a \tilde{\alpha}_a = \sum_p \tilde{\pi}_p = \sum_c \tilde{\gamma}_c = 0$  and  $\sum_a \tilde{\alpha}_a(a - \bar{a}) = \sum_p \tilde{\pi}_p(p - \bar{p}) = \sum_c \tilde{\gamma}_c(c - \bar{c}) = 0$ .<sup>2</sup> Note that this constraint does not limit the magnitude of trends *a priori*, but instead reflects the uncertainty in modeling the effects of age separately from period/cohort, and vice versa.<sup>1</sup> Parameters are estimated by numerically maximizing the Poisson log-likelihood with respect to  $\beta_0$ ,  $\beta_a$ ,  $\beta_c$ ,  $\tilde{\alpha}_a$ ,  $\tilde{\pi}_p$ , and  $\tilde{\gamma}_c$ .

In practice,  $\beta_a$  is called the ‘Longitudinal Age Trend’ (LAT) and  $\beta_c$  the ‘Net Drift’.<sup>3</sup> Age, period, and cohort deviations are combined with trend parameters to construct APC estimable functions, for example: cohort relative risk (RR), and age-specific annual percent change, called the “Local Drifts”.<sup>4</sup> Rosenberg and Anderson provide a comprehensive overview of such estimable functions and demonstrate their utility in studies of incidence rates.<sup>3</sup>

APC models are a subset of General Linear Models (GLM), thus the uncertainty in parameter estimates can be computed using standard methods. More specifically, the variance-covariance matrix for all model parameters is expressed as  $\sigma^2 (X^T V X)^{-1}$ , where  $X$  is the APC design matrix,  $V$  is a diagonal matrix with the fitted means  $\hat{\mu}_{apc}$  on the main diagonal, and  $\sigma^2$  is assumed to be 1 following standard Poisson GLM specifications. For computational details of APC parameter standard errors, including cohort RR and Local Drifts, please see descriptions by Rosenberg et al.<sup>4</sup> and the R code for the APC analysis web-tool (<https://analysistools.nci.nih.gov/apc/>).

## References

1. Rosenberg PS, Anderson WF. Proportional hazards models and age-period-cohort analysis of cancer rates. *Stat Med* 2010; **29**(11): 1228-38.
2. Holford TR. Understanding the effects of age, period, and cohort on incidence and mortality rates. *Annu Rev Public Health* 1991; **12**: 425-57.
3. Rosenberg PS, Anderson WF. Age-period-cohort models in cancer surveillance research: ready for prime time? *Cancer Epidemiol Biomarkers Prev* 2011; **20**(7): 1263-8.
4. Rosenberg PS, Check DP, Anderson WF. A web tool for age-period-cohort analysis of cancer incidence and mortality rates. *Cancer Epidemiol Biomarkers Prev* 2014; **23**(11): 2296-302.

**Table S1. Cause of death definitions based on ICD-10 codes.**

Cause of Death	SEER Cause of Death Label	ICD-10 codes
Cancer	All Malignant Cancers	C00-C97
In situ, benign or unknown behavior neoplasm	In situ, benign or unknown behavior neoplasm	D00-D48
Tuberculosis	Tuberculosis	A15-A19
Syphilis	Syphilis	A50-A53
HIV	Human Immunodeficiency Virus (HIV) (1987+)	B20-B24
Septicemia	Septicemia	A40-A41
Other Infectious/Parasitic Diseases	Other Infectious and Parasitic Diseases	A00-A08, A20-A33, A35-A39, A42-A49, A54-B19, B25-B99
Diabetes Mellitus	Diabetes Mellitus	E10-E14
Alzheimers	Alzheimers (ICD-9 and 10 only)	G30
Heart Disease	Diseases of Heart	I00-I09, I11, I13, I20-I51
Hypertension	Hypertension without Heart Disease	I10, I12
Cerebrovascular Diseases	Cerebrovascular Diseases	I60-I69
Atherosclerosis	Atherosclerosis	I70
Aortic Aneurysm and Dissection	Aortic Aneurysm and Dissection	I71
Other Diseases of Arteries, Arterioles, Capillaries	Other Diseases of Arteries, Arterioles, Capillaries	I72-I78
Pneumonia and Influenza	Pneumonia and Influenza	J09-J18
COPD	Chronic Obstructive Pulmonary Disease and Allied Cond	J40-J47
Stomach and Duodenal Ulcers	Stomach and Duodenal Ulcers	K25-K28
Chronic Liver Disease/Cirrhosis	Chronic Liver Disease and Cirrhosis	K70, K73-K74
Nephritis	Nephritis, Nephrotic Syndrome and Nephrosis	N00-N07, N17-N19, N25-N27
Complications of Pregnancy	Complications of Pregnancy, Childbirth, Puerperium	A34, O00-O95, O98-O99
Congenital Anomalies	Congenital Anomalies	Q00-Q99
Conditions of the Perinatal Period	Certain Conditions Originating in Perinatal Period	P00-P96
Ill-Defined Conditions	Symptoms, Signs and Ill-Defined Conditions	R00-R99
Accidents	Accidents and Adverse Effects	V01-X59, Y85-Y86
Suicide	Suicide and Self-Inflicted Injury	U03, X60-X84, Y87.0
Homicide and Legal Intervention	Homicide and Legal Intervention	U01-U02, X85-Y09, Y35, Y87.1, Y89.0
Other Cause of Death	Other Cause of Death	--

**Table S2. Estimated annual percentage change (APC) in all-cause mortality by age and sex in Canada, and England and Wales and by age, sex and race and ethnicity in the USA, 1999-2014**

Country	Age	Estimated APC	Women		Estimated APC	Men		
			95% CI LL	95% CI UL		95% CI LL	95% CI UL	
Canada	25	-0.57	-0.98	-0.16	-0.72	-1.03	-0.41	
	26	-0.13	-0.50	0.24	-0.60	-0.88	-0.33	
	27	0.02	-0.33	0.38	-0.73	-0.99	-0.46	
	28	-0.12	-0.46	0.22	-0.99	-1.24	-0.73	
	29	-0.33	-0.66	0.00	-1.31	-1.56	-1.06	
	30	-0.60	-0.93	-0.27	-1.61	-1.86	-1.37	
	31	-0.88	-1.20	-0.55	-1.89	-2.14	-1.65	
	32	-1.07	-1.39	-0.74	-2.07	-2.31	-1.83	
	33	-1.19	-1.51	-0.87	-2.19	-2.42	-1.95	
	34	-1.31	-1.63	-0.99	-2.23	-2.47	-2.00	
	35	-1.43	-1.74	-1.11	-2.23	-2.47	-2.00	
	36	-1.51	-1.82	-1.19	-2.20	-2.43	-1.96	
	37	-1.57	-1.89	-1.26	-2.13	-2.36	-1.89	
	38	-1.61	-1.92	-1.29	-2.02	-2.25	-1.79	
	39	-1.60	-1.91	-1.28	-1.89	-2.12	-1.66	
	40	-1.55	-1.86	-1.23	-1.75	-1.98	-1.52	
	41	-1.46	-1.78	-1.15	-1.63	-1.86	-1.39	
	42	-1.36	-1.67	-1.04	-1.54	-1.78	-1.31	
	43	-1.24	-1.56	-0.93	-1.51	-1.74	-1.27	
	44	-1.13	-1.45	-0.81	-1.52	-1.76	-1.28	
	45	-1.02	-1.34	-0.70	-1.57	-1.81	-1.33	
	46	-0.91	-1.24	-0.59	-1.63	-1.87	-1.39	
	47	-0.81	-1.14	-0.48	-1.68	-1.92	-1.43	
	48	-0.73	-1.07	-0.39	-1.69	-1.94	-1.44	
	49	-0.67	-1.01	-0.32	-1.66	-1.91	-1.41	
	50	-0.63	-0.99	-0.28	-1.60	-1.85	-1.33	
	51	-0.65	-1.01	-0.28	-1.51	-1.78	-1.24	
	52	-0.72	-1.10	-0.35	-1.43	-1.71	-1.15	
	53	-0.88	-1.27	-0.49	-1.39	-1.68	-1.11	
	54	-1.05	-1.84	-0.26	-1.54	-2.05	-1.03	
	55	-1.47	-2.29	-0.64	-1.90	-2.43	-1.36	
	56	-2.08	-2.87	-1.29	-2.21	-2.73	-1.68	
	57	-2.82	-3.54	-2.09	-2.49	-2.99	-1.99	
	58	-3.18	-3.85	-2.51	-2.76	-3.22	-2.30	
	59	-3.31	-3.93	-2.68	-2.86	-3.29	-2.42	
	60	-3.06	-3.66	-2.46	-2.77	-3.19	-2.36	
	61	-2.66	-3.29	-2.03	-2.56	-2.98	-2.14	
	62	-2.11	-2.82	-1.39	-2.22	-2.68	-1.76	
	63	-1.45	-2.30	-0.60	-1.75	-2.29	-1.21	
	64	-0.80	-1.82	0.22	-1.24	-1.87	-0.59	
	England and Wales	25	-0.47	-0.89	-0.04	0.00	-0.33	0.32
		26	-0.36	-0.74	0.03	0.20	-0.10	0.49
		27	-0.61	-0.98	-0.24	-0.07	-0.36	0.21
		28	-0.99	-1.35	-0.63	-0.57	-0.84	-0.29
		29	-1.37	-1.73	-1.01	-1.14	-1.41	-0.87
		30	-1.67	-2.02	-1.32	-1.66	-1.92	-1.39
		31	-1.88	-2.23	-1.53	-2.04	-2.31	-1.78
		32	-1.97	-2.32	-1.62	-2.21	-2.47	-1.94
		33	-1.96	-2.31	-1.62	-2.20	-2.46	-1.94
		34	-1.89	-2.23	-1.54	-2.05	-2.31	-1.79
		35	-1.77	-2.11	-1.42	-1.85	-2.11	-1.59
		36	-1.64	-1.98	-1.29	-1.65	-1.91	-1.39
		37	-1.54	-1.88	-1.19	-1.50	-1.76	-1.24
		38	-1.45	-1.79	-1.11	-1.42	-1.68	-1.16
	39	-1.38	-1.72	-1.03	-1.40	-1.66	-1.14	
	40	-1.32	-1.66	-0.98	-1.46	-1.72	-1.20	
	41	-1.30	-1.65	-0.96	-1.58	-1.84	-1.33	
	42	-1.33	-1.67	-0.99	-1.77	-2.03	-1.51	
	43	-1.41	-1.75	-1.07	-2.00	-2.25	-1.74	
	44	-1.54	-1.88	-1.19	-2.25	-2.51	-2.00	
	45	-1.71	-2.05	-1.36	-2.52	-2.78	-2.26	
	46	-1.89	-2.24	-1.54	-2.78	-3.04	-2.52	
	47	-2.07	-2.42	-1.72	-3.01	-3.27	-2.75	

	48	-2.20	-2.56	-1.85	-3.20	-3.46	-2.93
	49	-2.28	-2.65	-1.92	-3.31	-3.58	-3.04
	50	-2.30	-2.67	-1.92	-3.34	-3.61	-3.06
	51	-2.25	-2.64	-1.87	-3.26	-3.54	-2.98
	52	-2.17	-2.57	-1.77	-3.08	-3.37	-2.79
	53	-2.07	-2.48	-1.66	-2.79	-3.09	-2.48
	54	-1.32	-2.23	-0.40	-1.69	-2.29	-1.09
	55	-1.37	-2.31	-0.43	-0.55	-1.19	0.09
	56	-1.49	-2.38	-0.59	-0.06	-0.68	0.56
	57	-1.44	-2.27	-0.61	0.20	-0.38	0.79
	58	-1.38	-2.13	-0.61	0.31	-0.22	0.85
	59	-1.55	-2.25	-0.84	0.19	-0.31	0.68
	60	-1.70	-2.38	-1.02	-0.13	-0.60	0.35
	61	-1.86	-2.57	-1.15	-0.75	-1.24	-0.26
	62	-2.02	-2.84	-1.20	-1.53	-2.07	-0.98
	63	-2.15	-3.12	-1.17	-2.47	-3.11	-1.83
	64	-2.33	-3.49	-1.15	-3.47	-4.22	-2.72
United States - All	25	1.09	0.98	1.19	0.17	0.07	0.27
	26	1.03	0.93	1.12	-0.07	-0.16	0.02
	27	0.90	0.81	0.99	-0.34	-0.43	-0.25
	28	0.75	0.66	0.84	-0.60	-0.68	-0.52
	29	0.56	0.48	0.65	-0.81	-0.89	-0.73
	30	0.39	0.31	0.48	-0.94	-1.02	-0.87
	31	0.17	0.09	0.25	-1.11	-1.18	-1.03
	32	-0.07	-0.15	0.01	-1.27	-1.34	-1.19
	33	-0.31	-0.39	-0.23	-1.37	-1.45	-1.30
	34	-0.53	-0.61	-0.45	-1.41	-1.48	-1.34
	35	-0.69	-0.77	-0.61	-1.38	-1.45	-1.31
	36	-0.84	-0.92	-0.76	-1.32	-1.40	-1.25
	37	-1.03	-1.11	-0.95	-1.32	-1.39	-1.25
	38	-1.05	-1.12	-0.97	-1.13	-1.20	-1.06
	39	-1.04	-1.12	-0.97	-0.97	-1.04	-0.90
	40	-0.94	-1.02	-0.87	-0.74	-0.81	-0.67
	41	-0.78	-0.86	-0.71	-0.53	-0.60	-0.46
	42	-0.63	-0.70	-0.55	-0.37	-0.44	-0.30
	43	-0.46	-0.54	-0.39	-0.22	-0.29	-0.15
	44	-0.29	-0.37	-0.22	-0.10	-0.17	-0.03
	45	-0.08	-0.15	0.00	0.06	-0.01	0.13
	46	0.11	0.04	0.19	0.12	0.05	0.19
	47	0.16	0.09	0.24	0.10	0.03	0.16
	48	0.16	0.08	0.23	0.01	-0.05	0.08
	49	-0.10	-0.24	0.03	-0.37	-0.48	-0.26
	50	-0.39	-0.53	-0.25	-0.70	-0.81	-0.58
	51	-0.60	-0.73	-0.46	-0.96	-1.07	-0.85
	52	-0.88	-1.01	-0.76	-1.29	-1.39	-1.18
	53	-1.08	-1.20	-0.97	-1.53	-1.63	-1.43
	54	-1.23	-1.35	-1.12	-1.77	-1.87	-1.67
	55	-1.34	-1.44	-1.23	-1.97	-2.06	-1.87
	56	-1.37	-1.48	-1.26	-2.02	-2.11	-1.92
	57	-1.41	-1.51	-1.30	-2.09	-2.18	-1.99
	58	-1.33	-1.44	-1.22	-2.05	-2.15	-1.96
	59	-1.25	-1.37	-1.13	-1.98	-2.08	-1.87
	60	-1.06	-1.19	-0.93	-1.77	-1.88	-1.66
	61	-0.76	-0.91	-0.62	-1.39	-1.51	-1.27
	62	-0.43	-0.59	-0.27	-1.01	-1.14	-0.88
	63	-0.05	-0.22	0.13	-0.55	-0.69	-0.40
	64	0.28	0.09	0.48	-0.11	-0.27	0.05
USA - American Indian or Alaska Native	25	4.96	3.86	6.07	2.70	1.79	3.62
	26	4.94	3.98	5.90	2.59	1.82	3.36
	27	4.94	4.07	5.81	2.58	1.90	3.27
	28	4.78	3.96	5.60	2.29	1.65	2.93
	29	4.47	3.69	5.26	1.99	1.38	2.60
	30	4.27	3.51	5.03	1.90	1.32	2.48
	31	3.91	3.17	4.65	1.91	1.35	2.48
	32	3.50	2.78	4.22	1.69	1.14	2.24
	33	3.10	2.40	3.81	1.32	0.79	1.86
	34	2.73	2.05	3.42	1.20	0.68	1.72
	35	2.45	1.78	3.13	1.29	0.78	1.80
	36	2.25	1.59	2.92	1.14	0.64	1.64
	37	1.76	1.12	2.41	1.05	0.57	1.54

	38	1.60	0.97	2.24	1.05	0.57	1.53
	39	1.28	0.66	1.91	1.11	0.64	1.58
	40	1.15	0.54	1.77	1.03	0.57	1.50
	41	0.92	0.31	1.54	0.85	0.40	1.32
	42	0.88	0.27	1.49	0.79	0.33	1.24
	43	0.77	0.16	1.38	0.65	0.19	1.10
	44	0.87	0.26	1.48	0.65	0.19	1.10
	45	0.99	0.38	1.59	0.75	0.30	1.21
	46	1.08	0.48	1.69	0.85	0.40	1.31
	47	0.99	0.39	1.59	0.84	0.39	1.29
	48	0.95	0.35	1.55	0.97	0.52	1.42
	49	1.10	0.13	2.08	1.16	0.47	1.84
	50	1.23	0.22	2.25	1.15	0.45	1.87
	51	1.16	0.17	2.16	1.18	0.49	1.88
	52	0.78	-0.15	1.72	1.10	0.43	1.78
	53	1.06	0.16	1.98	0.88	0.23	1.54
	54	0.73	-0.13	1.61	0.85	0.21	1.50
	55	0.60	-0.26	1.46	0.98	0.34	1.62
	56	0.33	-0.51	1.18	0.89	0.26	1.52
	57	0.67	-0.19	1.54	0.83	0.20	1.47
	58	0.73	-0.15	1.61	0.74	0.10	1.38
	59	1.05	0.13	1.97	0.71	0.06	1.37
	60	1.36	0.39	2.34	0.68	0.00	1.36
	61	1.84	0.79	2.91	0.85	0.13	1.58
	62	2.23	1.08	3.40	0.93	0.16	1.71
	63	2.22	0.95	3.51	1.12	0.28	1.98
	64	2.33	0.92	3.76	1.27	0.34	2.21
USA - Asian or Pacific Islander	25	-0.53	-1.14	0.09	0.07	-0.43	0.57
	26	-0.74	-1.29	-0.19	-0.11	-0.54	0.32
	27	-0.98	-1.49	-0.46	-0.41	-0.81	-0.01
	28	-0.97	-1.47	-0.48	-0.67	-1.05	-0.28
	29	-1.09	-1.57	-0.60	-0.76	-1.13	-0.39
	30	-0.88	-1.35	-0.40	-0.92	-1.27	-0.56
	31	-0.75	-1.21	-0.28	-0.98	-1.33	-0.63
	32	-0.95	-1.41	-0.49	-1.11	-1.45	-0.76
	33	-0.92	-1.37	-0.47	-1.17	-1.51	-0.83
	34	-1.17	-1.62	-0.73	-1.18	-1.52	-0.85
	35	-1.27	-1.71	-0.83	-1.20	-1.53	-0.87
	36	-1.28	-1.71	-0.84	-1.23	-1.56	-0.90
	37	-1.44	-1.87	-1.01	-1.25	-1.57	-0.93
	38	-1.49	-1.91	-1.06	-1.20	-1.52	-0.88
	39	-1.59	-2.01	-1.17	-1.10	-1.41	-0.78
	40	-1.63	-2.05	-1.22	-1.05	-1.36	-0.74
	41	-1.69	-2.11	-1.28	-0.97	-1.28	-0.66
	42	-1.77	-2.18	-1.35	-0.91	-1.22	-0.60
	43	-1.73	-2.14	-1.32	-0.82	-1.13	-0.52
	44	-1.65	-2.06	-1.24	-0.76	-1.06	-0.45
	45	-1.63	-2.03	-1.22	-0.74	-1.04	-0.43
	46	-1.51	-1.92	-1.11	-0.73	-1.03	-0.42
	47	-1.49	-1.90	-1.09	-0.71	-1.01	-0.41
	48	-1.55	-1.95	-1.15	-0.84	-1.13	-0.54
	49	-1.93	-2.58	-1.27	-1.37	-1.82	-0.92
	50	-2.06	-2.76	-1.36	-1.54	-2.02	-1.06
	51	-1.97	-2.66	-1.27	-1.69	-2.17	-1.21
	52	-2.06	-2.72	-1.39	-1.90	-2.36	-1.44
	53	-2.27	-2.90	-1.63	-2.15	-2.60	-1.71
	54	-2.35	-2.96	-1.75	-2.35	-2.78	-1.92
	55	-2.24	-2.83	-1.64	-2.32	-2.74	-1.89
	56	-2.41	-2.99	-1.83	-2.24	-2.67	-1.82
	57	-2.51	-3.09	-1.93	-2.01	-2.44	-1.58
	58	-2.62	-3.21	-2.03	-1.87	-2.31	-1.43
	59	-2.33	-2.95	-1.70	-1.53	-1.98	-1.08
	60	-2.18	-2.84	-1.50	-1.17	-1.65	-0.69
	61	-1.88	-2.61	-1.14	-0.75	-1.26	-0.24
	62	-1.63	-2.43	-0.82	-0.39	-0.94	0.17
	63	-1.43	-2.32	-0.54	0.02	-0.58	0.63
	64	-1.16	-2.15	-0.17	0.18	-0.49	0.84
USA - Black	25	-2.10	-2.31	-1.89	-3.05	-3.25	-2.86
	26	-2.14	-2.33	-1.95	-3.25	-3.42	-3.08
	27	-2.31	-2.48	-2.13	-3.43	-3.59	-3.27



	28	-2.50	-2.67	-2.33	-3.51	-3.66	-3.36
	29	-2.64	-2.80	-2.47	-3.50	-3.65	-3.35
	30	-2.75	-2.91	-2.59	-3.41	-3.56	-3.27
	31	-2.80	-2.95	-2.64	-3.31	-3.45	-3.17
	32	-2.92	-3.08	-2.77	-3.26	-3.40	-3.12
	33	-3.01	-3.17	-2.86	-3.14	-3.28	-3.00
	34	-3.05	-3.20	-2.89	-2.98	-3.12	-2.85
	35	-2.95	-3.10	-2.80	-2.70	-2.84	-2.57
	36	-2.92	-3.07	-2.77	-2.46	-2.59	-2.33
	37	-2.88	-3.03	-2.73	-2.27	-2.40	-2.13
	38	-2.80	-2.95	-2.65	-1.98	-2.11	-1.85
	39	-2.65	-2.79	-2.50	-1.79	-1.92	-1.66
	40	-2.38	-2.52	-2.23	-1.56	-1.69	-1.44
	41	-2.09	-2.24	-1.95	-1.40	-1.53	-1.27
	42	-1.96	-2.10	-1.81	-1.39	-1.51	-1.26
	43	-1.88	-2.03	-1.74	-1.46	-1.58	-1.33
	44	-1.76	-1.91	-1.62	-1.53	-1.65	-1.40
	45	-1.57	-1.71	-1.43	-1.50	-1.62	-1.37
	46	-1.43	-1.57	-1.28	-1.62	-1.74	-1.50
	47	-1.44	-1.59	-1.30	-1.78	-1.90	-1.66
	48	-1.51	-1.66	-1.37	-2.01	-2.14	-1.89
	49	-1.68	-1.94	-1.41	-2.55	-2.74	-2.36
	50	-1.81	-2.08	-1.53	-2.83	-3.03	-2.63
	51	-1.90	-2.16	-1.63	-3.09	-3.28	-2.89
	52	-2.05	-2.30	-1.80	-3.44	-3.63	-3.26
	53	-2.21	-2.44	-1.98	-3.63	-3.81	-3.45
	54	-2.34	-2.56	-2.12	-3.76	-3.94	-3.59
	55	-2.51	-2.72	-2.30	-3.87	-4.05	-3.70
	56	-2.55	-2.75	-2.34	-3.79	-3.97	-3.62
	57	-2.60	-2.81	-2.39	-3.85	-4.02	-3.67
	58	-2.60	-2.82	-2.38	-3.79	-3.97	-3.62
	59	-2.72	-2.95	-2.49	-3.76	-3.94	-3.58
	60	-2.67	-2.93	-2.42	-3.62	-3.81	-3.43
	61	-2.55	-2.83	-2.27	-3.25	-3.46	-3.05
	62	-2.41	-2.72	-2.10	-2.95	-3.18	-2.73
	63	-2.25	-2.60	-1.91	-2.52	-2.77	-2.28
	64	-2.09	-2.48	-1.71	-2.16	-2.43	-1.89
USA - Hispanic	25	-0.83	-1.15	-0.52	-2.54	-2.81	-2.27
	26	-1.05	-1.33	-0.77	-2.61	-2.84	-2.38
	27	-1.04	-1.30	-0.79	-2.78	-2.99	-2.57
	28	-1.13	-1.37	-0.89	-3.04	-3.23	-2.84
	29	-1.22	-1.46	-0.99	-3.18	-3.37	-3.00
	30	-1.22	-1.45	-1.00	-3.10	-3.28	-2.93
	31	-1.23	-1.45	-1.00	-3.09	-3.26	-2.91
	32	-1.30	-1.51	-1.08	-3.19	-3.36	-3.02
	33	-1.43	-1.65	-1.22	-3.23	-3.40	-3.07
	34	-1.49	-1.70	-1.28	-3.14	-3.30	-2.98
	35	-1.48	-1.69	-1.28	-3.08	-3.24	-2.93
	36	-1.45	-1.66	-1.25	-2.92	-3.08	-2.77
	37	-1.41	-1.61	-1.21	-2.78	-2.93	-2.63
	38	-1.43	-1.63	-1.23	-2.63	-2.78	-2.48
	39	-1.49	-1.69	-1.30	-2.42	-2.56	-2.27
	40	-1.39	-1.58	-1.20	-2.15	-2.30	-2.01
	41	-1.23	-1.42	-1.03	-1.89	-2.04	-1.75
	42	-1.10	-1.29	-0.91	-1.68	-1.82	-1.54
	43	-1.00	-1.19	-0.81	-1.55	-1.69	-1.40
	44	-0.93	-1.12	-0.74	-1.40	-1.54	-1.25
	45	-0.82	-1.01	-0.63	-1.24	-1.38	-1.10
	46	-0.64	-0.82	-0.45	-1.10	-1.24	-0.95
	47	-0.56	-0.75	-0.37	-1.07	-1.21	-0.92
	48	-0.49	-0.68	-0.31	-1.12	-1.26	-0.97
	49	-0.94	-1.25	-0.63	-1.56	-1.77	-1.35
	50	-1.54	-1.85	-1.23	-1.79	-2.01	-1.57
	51	-1.94	-2.24	-1.63	-1.90	-2.12	-1.67
	52	-2.26	-2.55	-1.96	-2.10	-2.31	-1.89
	53	-2.38	-2.66	-2.10	-2.27	-2.48	-2.06
	54	-2.53	-2.80	-2.26	-2.44	-2.64	-2.23
	55	-2.65	-2.91	-2.38	-2.60	-2.81	-2.40
	56	-2.56	-2.83	-2.30	-2.66	-2.86	-2.46
	57	-2.45	-2.72	-2.18	-2.80	-3.00	-2.61

	58	-2.29	-2.56	-2.01	-2.86	-3.05	-2.66
	59	-2.07	-2.35	-1.78	-2.91	-3.11	-2.71
	60	-1.79	-2.09	-1.49	-2.79	-3.00	-2.58
	61	-1.37	-1.70	-1.05	-2.57	-2.79	-2.35
	62	-0.90	-1.26	-0.55	-2.31	-2.55	-2.07
	63	-0.31	-0.70	0.08	-2.02	-2.28	-1.75
	64	0.19	-0.24	0.63	-1.69	-1.98	-1.41
USA - White	25	2.95	2.83	3.08	1.86	1.75	1.97
	26	2.92	2.80	3.04	1.61	1.51	1.71
	27	2.81	2.70	2.93	1.33	1.23	1.42
	28	2.66	2.55	2.77	1.03	0.94	1.13
	29	2.47	2.36	2.57	0.77	0.68	0.86
	30	2.25	2.15	2.36	0.57	0.49	0.66
	31	1.97	1.86	2.07	0.34	0.25	0.43
	32	1.68	1.57	1.78	0.12	0.04	0.21
	33	1.37	1.27	1.47	-0.05	-0.13	0.04
	34	1.07	0.97	1.17	-0.17	-0.25	-0.08
	35	0.81	0.71	0.91	-0.22	-0.31	-0.14
	36	0.57	0.47	0.67	-0.24	-0.32	-0.15
	37	0.26	0.16	0.36	-0.33	-0.41	-0.25
	38	0.16	0.06	0.26	-0.21	-0.29	-0.13
	39	0.09	-0.01	0.19	-0.10	-0.18	-0.02
	40	0.10	0.01	0.20	0.10	0.02	0.18
	41	0.18	0.09	0.28	0.29	0.21	0.37
	42	0.32	0.22	0.41	0.45	0.38	0.53
	43	0.45	0.36	0.55	0.61	0.53	0.69
	44	0.59	0.49	0.68	0.73	0.65	0.81
	45	0.78	0.68	0.87	0.88	0.80	0.96
	46	0.93	0.84	1.03	0.94	0.86	1.02
	47	0.95	0.86	1.04	0.90	0.82	0.98
	48	0.91	0.81	1.00	0.81	0.73	0.89
	49	0.62	0.44	0.79	0.44	0.31	0.57
	50	0.30	0.13	0.48	0.01	-0.12	0.15
	51	0.04	-0.12	0.21	-0.33	-0.46	-0.20
	52	-0.29	-0.45	-0.13	-0.72	-0.84	-0.59
	53	-0.55	-0.70	-0.40	-1.01	-1.13	-0.90
	54	-0.71	-0.85	-0.57	-1.32	-1.43	-1.21
	55	-0.78	-0.92	-0.65	-1.56	-1.67	-1.45
	56	-0.81	-0.95	-0.68	-1.63	-1.74	-1.53
	57	-0.84	-0.98	-0.70	-1.66	-1.77	-1.55
	58	-0.71	-0.85	-0.56	-1.57	-1.68	-1.46
	59	-0.56	-0.72	-0.41	-1.41	-1.53	-1.29
	60	-0.32	-0.48	-0.15	-1.12	-1.25	-0.99
	61	0.05	-0.13	0.24	-0.64	-0.78	-0.50
	62	0.46	0.25	0.66	-0.14	-0.30	0.01
	63	0.94	0.71	1.17	0.42	0.25	0.59
	64	1.32	1.07	1.58	0.98	0.79	1.16

**Table S3. Age-adjusted mortality rates in U.S. men and women by race/ethnicity, age group and calendar period, 1999-2014.**

<i>Age, years</i>	<i>Calendar period</i>	<i>Men</i>		<i>Women</i>	
		<i>Deaths</i>	<i>Rate</i>	<i>Deaths</i>	<i>Rate</i>
<b>White</b>					
25-39	1999-2002	124,802	151.8	62,145	76.1
	2003-2006	117,160	155.9	58,507	78.8
	2007-2010	116,008	159.1	57,871	81.2
	2011-2014	119,320	165.5	60,360	86.5
	Rate Ratio*		1.09		1.14
40-49	1999-2002	217,436	343.6	121,853	191.2
	2003-2006	224,258	349.4	131,652	203.6
	2007-2010	203,692	334.8	125,337	205.0
	2011-2014	177,779	321.4	113,601	205.2
	Rate Ratio*		0.94		1.07
50-64	1999-2002	603,917	919.3	393,672	569.8
	2003-2006	668,658	886.8	429,116	543.3
	2007-2010	733,347	863.2	461,701	520.9
	2011-2014	790,656	871.8	498,261	527.7
	Rate Ratio*		0.95		0.93
<b>Hispanic</b>					
25-39	1999-2002	27,521	139.7	9,781	57.1
	2003-2006	29,805	133.3	10,259	52.0
	2007-2010	29,111	118.0	10,901	48.8
	2011-2014	28,605	109.0	11,412	47.8
	Rate Ratio*		0.78		0.84
40-49	1999-2002	26,319	309.6	12,370	148.7
	2003-2006	30,166	285.2	14,382	139.8
	2007-2010	30,616	244.3	15,418	126.9
	2011-2014	30,752	216.5	16,283	118.4
	Rate Ratio*		0.70		0.80
50-64	1999-2002	46,619	775.2	28,643	432.2
	2003-2006	57,138	739.9	34,003	404.6
	2007-2010	67,809	680.0	39,730	370.1
	2011-2014	81,513	650.3	47,055	353.5
	Rate Ratio*		0.84		0.82
<b>Black</b>					
25-39	1999-2002	46,469	311.5	26,693	160.8
	2003-2006	43,834	301.4	24,150	149.7
	2007-2010	39,721	266.1	21,395	131.0

	2011-2014	38,847	249.1	20,431	122.9
	Rate Ratio*		0.80		0.76
40-49	1999-2002	65,378	691.0	45,198	417.3
	2003-2006	63,722	614.3	46,326	394.3
	2007-2010	53,699	508.3	40,658	341.7
	2011-2014	46,467	450.6	35,189	303.3
	Rate Ratio*		0.65		0.73
50-64	1999-2002	133,803	1728	95,790	1,014
	2003-2006	151,680	1624	106,414	946.8
	2007-2010	164,009	1444	115,662	857.6
	2011-2014	176,472	1335	127,287	814.8
	Rate Ratio*		0.77		0.80
<b>Asian Pacific/Alaska Natives</b>					
25-39	1999-2002	4,148	68.1	2,294	35.9
	2003-2006	4,203	60.9	2,453	33.2
	2007-2010	4,428	58.6	2,669	31.9
	2011-2014	4,984	60.1	2,788	30.7
	Rate Ratio*		0.88		0.86
40-49	1999-2002	5,382	159.8	3,742	98.3
	2003-2006	5,942	151.5	4,046	92.1
	2007-2010	6,110	138.7	4,001	80.9
	2011-2014	6,843	137.6	4,496	80.1
	Rate Ratio*		0.86		0.81
50-64	1999-2002	14,245	488.3	10,127	304.2
	2003-2006	16,589	444.4	11,853	271.7
	2007-2010	19,386	414.3	13,558	242.9
	2011-2014	22,969	407.6	15,871	235.7
	Rate Ratio*		0.83		0.78
<b>American Indian/Alaska Natives</b>					
25-39	1999-2002	2,304	377.2	1,160	182.2
	2003-2006	2,493	419.1	1,224	200.4
	2007-2010	2,630	423.3	1,371	216.4
	2011-2014	2,935	442.7	1,585	240.0
	Rate Ratio*		1.17		1.32
40-49	1999-2002	2,395	635.1	1,429	342.8
	2003-2006	2,862	690.7	1,819	401.7
	2007-2010	3,027	722.7	1,908	422.3
	2011-2014	3,034	755.1	1,996	467.9
	Rate Ratio*		1.19		1.37

50-64	1999-2002	4,260	1317	3,078	860.8
	2003-2006	5,182	1349	3,712	867.4
	2007-2010	6,082	1335	4,301	839.8
	2011-2014	7,261	1409	5,055	863.1
	Rate Ratio*		1.07		1.00

---

\*Age-adjusted rate ratio comparing mortality rates in 2011-2014 to 1999-2002.

**Table S4. Age-standardized mortality rates by race/ethnicity, sex, age group, calendar period and cause of death.**

		1999-2002		2011-2014		Absolute change	Rate Ratio
		Deaths	IR	Deaths	IR		
<b>Whites</b>							
<b>Men</b>							
<b>25-39</b>	All Causes of Death	124,802	151.8	119,320	165.5	13.7	1.09
	Accidents & Adverse Effects	39,272	47.9	48,252	65.6	17.7	1.37
	Suicide & Self-Inflicted Injury	20,644	25.2	22,370	30.7	5.5	1.22
	Diseases of Heart	12,709	15.4	10,534	15.3	-0.1	1.00
	All Malignant Cancers	11,704	14.2	8,394	12.1	-2.1	0.85
	Homicide & Legal Intervention	5,682	6.9	4,127	5.6	-1.3	0.81
	Ill-Defined Conditions	4,246	5.2	2,327	3.2	-2.0	0.62
	Chronic Liver Disease and Cirrhosis	2,283	2.8	2,092	3.1	0.3	1.12
	Diabetes Mellitus	1,926	2.3	1,743	2.5	0.2	1.08
	Cerebrovascular Diseases	1,508	1.8	1,122	1.6	-0.2	0.89
	Pneumonia & Influenza	982	1.2	1,022	1.4	0.2	1.21
	Congenital Anomalies	1,192	1.5	946	1.3	-0.2	0.89
	Septicemia	680	0.8	722	1.0	0.2	1.24
	HIV	5,078	6.1	692	1.0	-5.1	0.16
	COPD	612	0.7	583	0.8	0.1	1.10
	Nephritis, Nephrotic Syndrome & Nephrosis	532	0.6	484	0.7	0.1	1.09
	Other Infectious & Parasitic Diseases	912	1.1	432	0.6	-0.5	0.56
	Aortic Aneurysm & Dissection	429	0.5	370	0.5	0.0	1.03
	In situ, benign or unknown behavior neoplasm	464	0.6	321	0.4	-0.1	0.80
	Hypertension without Heart Disease	163	0.2	237	0.3	0.1	1.75
	Other Diseases of Arteries, Arterioles, Capillaries	115	0.1	93	0.1	0.0	0.95
	Stomach & Duodenal Ulcers	92	0.1	64	0.1	0.0	0.82
	Atherosclerosis	44	0.1	19	0.0	0.0	0.52
	Perinatal Period	16	0.0	12	0.0	0.0	0.79
	Tuberculosis	19	0.0	^	^	n.e.	n.e.
	Syphilis	^	^	^	^	n.e.	n.e.
	Alzheimers (ICD-9 & 10 only)	^	^	^	^	n.e.	n.e.
	Other Cause of Death	13,489	16.4	12,347	17.3	0.9	1.06
<b>40-49</b>	All Causes of Death	217,436	343.6	177,779	321.4	-22.2	0.94
	Diseases of Heart	48,589	76.6	35,957	64.4	-12.1	0.84
	Accidents & Adverse Effects	33,064	52.6	34,913	64.2	11.6	1.22
	All Malignant Cancers	41,320	65.0	29,008	51.6	-13.4	0.79
	Suicide & Self-Inflicted Injury	17,488	27.8	19,336	35.6	7.8	1.28
	Chronic Liver Disease/Cirrhosis	10,947	17.3	8,757	15.7	-1.6	0.91
	Diabetes Mellitus	5,069	8.0	5,015	9.0	1.0	1.13
	Cerebrovascular Diseases	4,728	7.5	3,480	6.2	-1.2	0.84
	Homicide & Legal Intervention	3,786	6.0	2,664	4.9	-1.1	0.82
	Ill-Defined Conditions	5,523	8.8	2,504	4.6	-4.2	0.52
	COPD	2,517	4.0	2,295	4.1	0.1	1.03
	HIV	6,186	9.8	2,097	3.8	-6.0	0.39
	Pneumonia & Influenza	2,116	3.3	1,909	3.4	0.1	1.03
	Other Infectious & Parasitic Diseases	4,166	6.6	1,878	3.3	-3.3	0.50
	Septicemia	1,706	2.7	1,673	3.0	0.3	1.12
	Nephritis, Nephrotic Syndrome & Nephrosis	1,308	2.1	1,224	2.2	0.1	1.06
	Hypertension without Heart Disease	638	1.0	946	1.7	0.7	1.68
	Aortic Aneurysm & Dissection	955	1.5	827	1.5	0.0	0.99
	Congenital Anomalies	1,014	1.6	820	1.5	-0.1	0.93
	In situ, benign or unknown behavior neoplasm	814	1.3	560	1.0	-0.3	0.79
	Other Diseases of Arteries, Arterioles, Capillaries	338	0.5	255	0.5	-0.1	0.86
	Stomach & Duodenal Ulcers	338	0.5	213	0.4	-0.2	0.71
	Atherosclerosis	191	0.3	107	0.2	-0.1	0.63

	Alzheimers (ICD-9 & 10 only)	38	0.1	35	0.1	0.0	1.03
	Tuberculosis	60	0.1	27	0.0	0.0	0.50
	Complications of Pregnancy, Childbirth, Puerperium	0	0.0	0	0.0	0.0	n.e.
	Syphilis	^	^	^	^	n.e.	n.e.
	Perinatal Period	11	0.0	^	^	n.e.	n.e.
	Other Cause of Death	24,524	38.8	21,269	38.5	-0.3	0.99
	All Causes of Death	603,917	919.3	790,656	871.8	-47.5	0.95
<b>50-64</b>	All Malignant Cancers	202,059	307.6	235,777	256.0	-51.6	0.83
	Diseases of Heart	178,680	272.0	191,189	210.3	-61.7	0.77
	Accidents & Adverse Effects	27,758	42.2	55,651	64.4	22.2	1.53
	Chronic Liver Disease/Cirrhosis	19,055	29.0	34,524	38.9	10.0	1.34
	COPD	23,014	35.1	32,499	34.7	-0.4	0.99
	Suicide & Self-Inflicted Injury	15,750	23.9	31,364	36.3	12.3	1.51
	Diabetes Mellitus	18,520	28.2	26,194	28.6	0.4	1.02
	Cerebrovascular Diseases	18,135	27.6	20,371	22.2	-5.4	0.80
	Other Infectious & Parasitic Diseases	5,381	8.2	12,882	14.3	6.1	1.75
	Septicemia	5,603	8.5	9,658	10.6	2.0	1.24
	Pneumonia & Influenza	6,153	9.4	9,518	10.4	1.1	1.11
	Nephritis, Nephrotic Syndrome & Nephrosis	5,110	7.8	8,003	8.7	0.9	1.12
	Ill-Defined Conditions	6,338	9.6	7,473	8.4	-1.3	0.87
	Hypertension without Heart Disease	2,377	3.6	5,950	6.5	2.9	1.80
	Aortic Aneurysm & Dissection	4,360	6.6	3,675	4.0	-2.6	0.60
	HIV	3,266	5.0	3,508	4.1	-0.9	0.83
	In situ, benign or unknown behavior neoplasm	2,850	4.3	3,381	3.7	-0.7	0.84
	Homicide & Legal Intervention	2,619	4.0	3,191	3.7	-0.2	0.94
	Congenital Anomalies	1,534	2.3	2,276	2.6	0.2	1.10
	Other Diseases of Arteries, Arterioles, Capillaries	1,589	2.4	1,965	2.1	-0.3	0.87
	Alzheimers (ICD-9 & 10 only)	868	1.3	1,286	1.3	0.0	1.00
	Stomach & Duodenal Ulcers	1,063	1.6	1,125	1.2	-0.4	0.76
	Atherosclerosis	1,144	1.7	915	1.0	-0.8	0.57
	Tuberculosis	183	0.3	158	0.2	-0.1	0.63
	Syphilis	^	^	11	0.0	n.e.	n.e.
	Complications of Pregnancy, Childbirth, Puerperium	0	0.0	0	0.0	0.0	n.e.
	Perinatal Period	^	^	^	^	n.e.	n.e.
	Other Cause of Death	50,496	76.9	88,105	97.4	20.6	1.27
<b>Women</b>	All Causes of Death	62,145	76.1	60,360	86.5	10.4	1.14
<b>25-39</b>	Accidents & Adverse Effects	13,615	16.7	19,305	27.0	10.3	1.62
	All Malignant Cancers	13,718	16.7	9,182	13.6	-3.1	0.81
	Suicide & Self-Inflicted Injury	5,110	6.3	6,208	8.8	2.5	1.40
	Diseases of Heart	5,600	6.8	4,757	7.0	0.2	1.02
	Homicide & Legal Intervention	2,497	3.1	1,689	2.3	-0.7	0.76
	Ill-Defined Conditions	2,153	2.6	1,468	2.1	-0.6	0.79
	Chronic Liver Disease/Cirrhosis	1,358	1.6	1,364	2.0	0.4	1.23
	Diabetes Mellitus	1,330	1.6	1,088	1.6	0.0	0.98
	Cerebrovascular Diseases	1,553	1.9	983	1.4	-0.5	0.76
	Pneumonia & Influenza	857	1.0	892	1.3	0.2	1.22
	Complications of Pregnancy, Childbirth, Puerperium	405	0.5	790	1.1	0.6	2.19
	Congenital Anomalies	942	1.2	695	1.0	-0.2	0.84
	Septicemia	605	0.7	661	1.0	0.2	1.31
	COPD	698	0.9	574	0.8	0.0	0.99
	Other Infectious & Parasitic Diseases	552	0.7	362	0.5	-0.2	0.78
	Nephritis, Nephrotic Syndrome & Nephrosis	431	0.5	357	0.5	0.0	0.99
	In situ, benign or unknown behavior neoplasm	370	0.5	263	0.4	-0.1	0.83
	HIV	1,090	1.3	235	0.3	-1.0	0.26
	Hypertension without Heart Disease	88	0.1	116	0.2	0.1	1.60
	Aortic Aneurysm & Dissection	148	0.2	107	0.2	0.0	0.86

	Other Diseases of Arteries, Arterioles, Capillaries	132	0.2	85	0.1	0.0	0.76
	Stomach & Duodenal Ulcers	44	0.1	40	0.1	0.0	1.11
	Syphilis	^	^	0	0.0	0.0	n.e.
	Tuberculosis	^	^	^	^	n.e.	n.e.
	Alzheimers (ICD-9 & 10 only)	^	^	^	^	n.e.	n.e.
	Atherosclerosis	22	0.0	^	^	n.e.	n.e.
	Perinatal Period	14	0.0	^	^	n.e.	n.e.
	Other Cause of Death	8,802	10.8	9,113	13.1	2.3	1.21
	All Causes of Death	121,853	191.2	113,601	205.2	14.0	1.07
<b>40-49</b>	All Malignant Cancers	44,608	69.8	32,833	58.7	-11.0	0.84
	Accidents & Adverse Effects	12,211	19.3	17,978	33.0	13.7	1.71
	Diseases of Heart	15,492	24.3	14,633	26.3	2.1	1.08
	Suicide & Self-Inflicted Injury	5,491	8.7	6,704	12.3	3.6	1.42
	Chronic Liver Disease/Cirrhosis	4,417	6.9	5,051	9.0	2.1	1.30
	Cerebrovascular Diseases	4,287	6.7	2,977	5.3	-1.4	0.80
	Diabetes Mellitus	3,092	4.8	2,922	5.3	0.4	1.09
	COPD	2,419	3.8	2,891	5.1	1.3	1.35
	Ill-Defined Conditions	2,900	4.6	1,773	3.2	-1.3	0.71
	Pneumonia & Influenza	1,539	2.4	1,689	3.1	0.7	1.27
	Septicemia	1,429	2.2	1,622	2.9	0.7	1.31
	Homicide & Legal Intervention	1,589	2.5	1,181	2.2	-0.3	0.87
	Other Infectious & Parasitic Diseases	1,663	2.6	1,123	2.0	-0.6	0.77
	Nephritis, Nephrotic Syndrome & Nephrosis	925	1.5	866	1.6	0.1	1.07
	Congenital Anomalies	880	1.4	755	1.4	0.0	0.99
	In situ, benign or unknown behavior neoplasm	649	1.0	470	0.8	-0.2	0.83
	HIV	1,017	1.6	465	0.8	-0.8	0.53
	Hypertension without Heart Disease	331	0.5	451	0.8	0.3	1.56
	Complications of Pregnancy, Childbirth, Puerperium	64	0.1	291	0.5	0.4	5.32
	Aortic Aneurysm & Dissection	277	0.4	226	0.4	0.0	0.93
	Other Diseases of Arteries, Arterioles, Capillaries	300	0.5	223	0.4	-0.1	0.85
	Stomach & Duodenal Ulcers	202	0.3	146	0.3	-0.1	0.83
	Atherosclerosis	77	0.1	53	0.1	0.0	0.78
	Alzheimers (ICD-9 & 10 only)	30	0.0	44	0.1	0.0	1.68
	Tuberculosis	18	0.0	12	0.0	0.0	0.80
	Syphilis	^	^	0	0.0	n.e.	n.e.
	Perinatal Period	^	^	^	^	n.e.	n.e.
	Other Cause of Death	15,941	25.0	16,216	29.4	4.3	1.17
	All Causes of Death	393,672	569.8	498,261	527.7	-42.0	0.93
<b>50-64</b>	All Malignant Cancers	174,141	252.1	193,890	204.0	-48.1	0.81
	Diseases of Heart	72,253	104.4	75,972	79.9	-24.5	0.77
	COPD	22,226	32.0	31,357	32.4	0.4	1.01
	Accidents & Adverse Effects	12,248	17.8	27,969	31.5	13.6	1.76
	Chronic Liver Disease/Cirrhosis	7,728	11.2	15,511	17.0	5.8	1.52
	Diabetes Mellitus	13,422	19.4	15,333	16.0	-3.4	0.83
	Cerebrovascular Diseases	15,015	21.7	15,286	16.1	-5.7	0.74
	Suicide & Self-Inflicted Injury	4,818	7.0	10,336	11.7	4.6	1.66
	Septicemia	5,076	7.3	8,348	8.8	1.4	1.19
	Pneumonia & Influenza	4,582	6.6	7,132	7.5	0.9	1.14
	Other Infectious & Parasitic Diseases	2,860	4.2	6,376	6.8	2.7	1.64
	Nephritis, Nephrotic Syndrome & Nephrosis	4,152	6.0	5,743	5.9	-0.1	0.99
	Ill-Defined Conditions	3,577	5.2	4,716	5.1	-0.1	0.98
	Hypertension without Heart Disease	1,588	2.3	3,183	3.3	1.0	1.45
	In situ, benign or unknown behavior neoplasm	2,237	3.2	2,473	2.6	-0.6	0.80
	Congenital Anomalies	1,527	2.2	2,001	2.2	0.0	0.98
	Alzheimers (ICD-9 & 10 only)	1,047	1.5	1,738	1.7	0.2	1.14
	Homicide & Legal Intervention	1,125	1.6	1,422	1.6	0.0	0.98
	Other Diseases of Arteries, Arterioles, Capillaries	1,301	1.9	1,274	1.3	-0.6	0.71



	Aortic Aneurysm & Dissection	1,339	1.9	1,175	1.2	-0.7	0.63
	Stomach & Duodenal Ulcers	627	0.9	695	0.7	-0.2	0.82
	HIV	404	0.6	658	0.7	0.2	1.26
	Atherosclerosis	643	0.9	488	0.5	-0.4	0.54
	Complications of Pregnancy, Childbirth, Puerperium	^	^	222	0.3	n.e.	n.e.
	Tuberculosis	52	0.1	65	0.1	0.0	0.91
	Syphilis	^	^	^	^	n.e.	n.e.
	Perinatal Period	^	^	^	^	n.e.	n.e.
	Other Cause of Death	39,675	57.5	64,884	68.7	11.2	1.20
	All Causes of Death	124,802	151.8	119,320	165.5	13.7	1.09
<b>Hispanics</b>							
<b>Men</b>							
<b>25-39</b>	All Causes of Death	27,521	139.7	28,605	109.0	-30.7	0.78
	Accidents & Adverse Effects	9,170	45.2	10,051	37.6	-7.6	0.83
	Homicide & Legal Intervention	3,971	18.8	3,582	13.2	-5.7	0.70
	Suicide & Self-Inflicted Injury	2,313	11.5	3,206	12.0	0.5	1.05
	All Malignant Cancers	1,784	9.4	2,354	9.2	-0.2	0.98
	Diseases of Heart	1,762	9.4	2,206	8.8	-0.6	0.93
	Chronic Liver Disease/Cirrhosis	838	4.8	918	3.8	-1.0	0.79
	HIV	2,212	12.1	618	2.4	-9.6	0.20
	Ill-Defined Conditions	1,023	5.2	541	2.0	-3.2	0.39
	Cerebrovascular Diseases	465	2.5	518	2.1	-0.4	0.84
	Diabetes Mellitus	271	1.5	434	1.7	0.3	1.20
	Pneumonia & Influenza	180	1.0	319	1.2	0.3	1.28
	Septicemia	148	0.8	209	0.8	0.0	1.04
	Congenital Anomalies	159	0.8	196	0.7	0.0	0.95
	Other Infectious & Parasitic Diseases	328	1.8	178	0.7	-1.1	0.40
	Nephritis, Nephrotic Syndrome & Nephrosis	90	0.5	136	0.5	0.1	1.13
	COPD	106	0.6	120	0.5	-0.1	0.83
	Aortic Aneurysm & Dissection	68	0.4	119	0.5	0.1	1.35
	In situ, benign or unknown behavior neoplasm	67	0.3	80	0.3	0.0	0.90
	Hypertension without Heart Disease	46	0.2	64	0.3	0.0	1.04
	Other Diseases of Arteries, Arterioles, Capillaries	11	0.1	26	0.1	0.0	1.76
	Tuberculosis	29	0.1	25	0.1	-0.1	0.65
	Stomach & Duodenal Ulcers	11	0.1	14	0.1	0.0	1.01
	Syphilis	0	0.0	0	0.0	0.0	n.e.
	Complications of Pregnancy, Childbirth, Puerperium	0	0.0	0	0.0	0.0	n.e.
	Perinatal Period	^	^	0	0.0	n.e.	n.e.
	Alzheimers (ICD-9 & 10 only)	0	0.0	^	^	n.e.	n.e.
	Atherosclerosis	^	^	^	^	n.e.	n.e.
	Other Cause of Death	2,465	12.9	2,686	10.4	-2.5	0.81
<b>40-49</b>	All Causes of Death	26,319	309.6	30,752	216.5	-93.1	0.70
	Accidents & Adverse Effects	4,542	52.5	5,755	40.5	-12.0	0.77
	Diseases of Heart	3,692	44.0	4,907	34.6	-9.4	0.79
	All Malignant Cancers	3,598	42.9	4,590	32.3	-10.6	0.75
	Chronic Liver Disease/Cirrhosis	2,609	30.9	2,776	19.6	-11.4	0.63
	Suicide & Self-Inflicted Injury	1,020	11.8	1,592	11.2	-0.6	0.95
	Cerebrovascular Diseases	969	11.5	1,182	8.3	-3.2	0.72
	Homicide & Legal Intervention	1,107	12.7	1,146	8.1	-4.7	0.63
	Diabetes Mellitus	721	8.6	1,128	7.9	-0.7	0.92
	HIV	2,232	25.9	889	6.3	-19.6	0.24
	Other Infectious & Parasitic Diseases	831	9.9	697	4.9	-5.0	0.50
	Pneumonia & Influenza	273	3.2	443	3.1	-0.1	0.96
	Ill-Defined Conditions	682	8.0	413	2.9	-5.1	0.36
	Septicemia	249	2.9	368	2.6	-0.3	0.88
	Nephritis, Nephrotic Syndrome & Nephrosis	222	2.6	352	2.5	-0.1	0.95
	Hypertension without Heart Disease	111	1.3	210	1.5	0.2	1.12
	COPD	155	1.8	174	1.2	-0.6	0.67
	Aortic Aneurysm & Dissection	90	1.1	146	1.0	0.0	0.97

	Congenital Anomalies	97	1.1	107	0.8	-0.4	0.66
	In situ, benign or unknown behavior neoplasm	98	1.1	98	0.7	-0.5	0.60
	Other Diseases of Arteries, Arterioles, Capillaries	39	0.4	43	0.3	-0.1	0.68
	Stomach & Duodenal Ulcers	31	0.4	41	0.3	-0.1	0.77
	Tuberculosis	27	0.3	27	0.2	-0.1	0.60
	Atherosclerosis	11	0.1	16	0.1	0.0	0.84
	Syphilis	^	^	0	0.0	n.e.	n.e.
	Complications of Pregnancy, Childbirth, Puerperium	0	0.0	0	0.0	0.0	n.e.
	Perinatal Period	^	^	0	0.0	n.e.	n.e.
	Alzheimers (ICD-9 & 10 only)	^	^	^	^	n.e.	n.e.
	Other Cause of Death	2,906	34.2	3,644	25.7	-8.5	0.75
<b>50-64</b>	All Causes of Death	46,619	775.2	81,513	650.3	-124.9	0.84
	All Malignant Cancers	11,720	196.6	20,888	167.6	-29.0	0.85
	Diseases of Heart	11,979	200.6	17,214	137.8	-62.8	0.69
	Chronic Liver Disease/Cirrhosis	3,550	58.0	7,000	55.4	-2.7	0.95
	Accidents & Adverse Effects	2,792	45.2	6,035	47.4	2.2	1.05
	Diabetes Mellitus	2,720	45.8	4,449	35.6	-10.2	0.78
	Cerebrovascular Diseases	2,175	36.3	3,376	27.0	-9.3	0.74
	Other Infectious & Parasitic Diseases	1,036	16.8	2,472	19.6	2.8	1.17
	Suicide & Self-Inflicted Injury	730	11.8	1,531	12.0	0.2	1.02
	Nephritis, Nephrotic Syndrome & Nephrosis	692	11.6	1,403	11.2	-0.4	0.97
	Septicemia	501	8.3	1,222	9.8	1.5	1.18
	Pneumonia & Influenza	591	9.9	1,212	9.7	-0.2	0.98
	HIV	1,163	18.5	1,206	9.4	-9.1	0.51
	COPD	722	12.3	1,194	9.6	-2.7	0.78
	Hypertension without Heart Disease	279	4.7	765	6.1	1.4	1.30
	Homicide & Legal Intervention	503	8.1	713	5.6	-2.5	0.69
	Ill-Defined Conditions	485	7.9	659	5.2	-2.7	0.66
	In situ, benign or unknown behavior neoplasm	177	3.0	298	2.4	-0.6	0.81
	Aortic Aneurysm & Dissection	231	3.9	268	2.1	-1.7	0.55
	Congenital Anomalies	94	1.5	194	1.5	0.0	1.00
	Other Diseases of Arteries, Arterioles, Capillaries	99	1.7	188	1.5	-0.2	0.90
	Alzheimers (ICD-9 & 10 only)	32	0.6	118	1.0	0.4	1.74
	Stomach & Duodenal Ulcers	112	1.9	116	0.9	-1.0	0.49
	Atherosclerosis	67	1.1	76	0.6	-0.5	0.55
	Tuberculosis	59	1.0	61	0.5	-0.5	0.50
	Complications of Pregnancy, Childbirth, Puerperium	0	0.0	0	0.0	0.0	n.e.
	Syphilis	^	^	^	^	n.e.	n.e.
	Perinatal Period	0	0.0	^	^	n.e.	n.e.
	Other Cause of Death	4,108	68.0	8,849	70.5	2.5	1.04
<b>Women</b>	All Causes of Death	9,781	57.1	11,412	47.8	-9.2	0.84
<b>25-39</b>	All Malignant Cancers	2,188	13.2	2,695	11.6	-1.6	0.88
	Accidents & Adverse Effects	1,901	10.8	2,531	10.3	-0.4	0.96
	Diseases of Heart	658	3.9	738	3.2	-0.8	0.80
	Suicide & Self-Inflicted Injury	372	2.1	662	2.7	0.6	1.27
	Homicide and Legal Intervention	714	4.0	622	2.5	-1.5	0.64
	Cerebrovascular Diseases	317	1.9	314	1.3	-0.5	0.71
	Chronic Liver Disease/Cirrhosis	205	1.3	278	1.2	-0.1	0.93
	Diabetes Mellitus	188	1.1	275	1.2	0.0	1.04
	Ill-Defined Conditions	323	1.9	261	1.1	-0.8	0.58
	Complications of Pregnancy, Childbirth, Puerperium	184	1.0	250	1.0	0.0	1.00
	Pneumonia & Influenza	106	0.6	187	0.8	0.2	1.26
	Septicemia	83	0.5	157	0.7	0.2	1.36
	HIV	634	3.8	156	0.7	-3.1	0.18
	Congenital Anomalies	120	0.7	132	0.5	-0.1	0.80
	COPD	103	0.6	97	0.4	-0.2	0.65

	Nephritis, Nephrotic Syndrome & Nephrosis	104	0.6	93	0.4	-0.2	0.66
	Other Infectious & Parasitic Diseases	148	0.9	88	0.4	-0.5	0.44
	In situ, benign or unknown behavior neoplasm	67	0.4	76	0.3	-0.1	0.83
	Hypertension without Heart Disease	19	0.1	39	0.2	0.1	1.52
	Other Diseases of Arteries, Arterioles, Capillaries	35	0.2	29	0.1	-0.1	0.62
	Aortic Aneurysm & Dissection	20	0.1	22	0.1	0.0	0.77
	Syphilis	0	0.0	0	0.0	0.0	n.e.
	Perinatal Period	^	^	0	0.0	n.e.	n.e.
	Tuberculosis	11	0.1	^	^	n.e.	n.e.
	Alzheimers (ICD-9 & 10 only)	0	0.0	^	^	n.e.	n.e.
	Atherosclerosis	^	^	^	^	n.e.	n.e.
	Stomach & Duodenal Ulcers	^	^	^	^	n.e.	n.e.
	Other Cause of Death	1,267	7.3	1,698	7.1	-0.2	0.97
<b>40-49</b>	All Causes of Death	12,370	148.7	16,283	118.4	-30.3	0.80
	All Malignant Cancers	4,222	50.9	5,762	41.9	-9.0	0.82
	Accidents & Adverse Effects	1,144	13.6	1,754	12.8	-0.9	0.94
	Diseases of Heart	1,224	14.8	1,654	12.0	-2.8	0.81
	Chronic Liver Disease/Cirrhosis	559	6.7	838	6.1	-0.6	0.91
	Cerebrovascular Diseases	672	8.1	744	5.4	-2.7	0.67
	Diabetes Mellitus	478	5.8	592	4.3	-1.5	0.74
	Suicide & Self-Inflicted Injury	211	2.5	432	3.1	0.6	1.25
	Homicide & Legal Intervention	286	3.4	279	2.0	-1.4	0.60
	HIV	656	7.8	265	1.9	-5.9	0.25
	Septicemia	142	1.7	254	1.8	0.1	1.08
	Pneumonia & Influenza	104	1.3	250	1.8	0.6	1.45
	Other Infectious & Parasitic Diseases	295	3.6	249	1.8	-1.8	0.51
	Nephritis, Nephrotic Syndrome & Nephrosis	146	1.8	214	1.6	-0.2	0.88
	Ill-Defined Conditions	245	2.9	194	1.4	-1.5	0.48
	COPD	190	2.3	154	1.1	-1.2	0.49
	Hypertension without Heart Disease	45	0.5	99	0.7	0.2	1.33
	In situ, benign or unknown behavior neoplasm	81	1.0	86	0.6	-0.3	0.65
	Complications of Pregnancy, Childbirth, Puerperium	22	0.3	84	0.6	0.4	2.43
	Congenital Anomalies	72	0.9	69	0.5	-0.4	0.58
	Other Diseases of Arteries, Arterioles, Capillaries	37	0.4	46	0.3	-0.1	0.75
	Aortic Aneurysm & Dissection	23	0.3	20	0.1	-0.1	0.53
	Tuberculosis	10	0.1	10	0.1	0.0	0.61
	Stomach & Duodenal Ulcers	10	0.1	10	0.1	0.0	0.60
	Syphilis	^	^	0	0.0	n.e.	n.e.
	Perinatal Period	^	^	0	0.0	n.e.	n.e.
	Alzheimers (ICD-9 & 10 only)	^	^	^	^	n.e.	n.e.
	Atherosclerosis	^	^	^	^	n.e.	n.e.
	Other Cause of Death	1,486	17.9	2,209	16.1	-1.8	0.90
<b>50-64</b>	All Causes of Death	28,643	432.2	47,055	353.5	-78.7	0.82
	All Malignant Cancers	10,274	154.8	17,544	131.8	-23.0	0.85
	Diseases of Heart	5,399	81.9	6,953	52.3	-29.6	0.64
	Diabetes Mellitus	2,277	34.6	2,876	21.6	-13.0	0.63
	Chronic Liver Disease/Cirrhosis	1,029	15.5	2,251	16.9	1.4	1.09
	Cerebrovascular Diseases	1,543	23.3	2,090	15.7	-7.6	0.67
	Accidents & Adverse Effects	1,021	15.3	2,087	15.7	0.4	1.03
	Other Infectious & Parasitic Diseases	523	7.9	1,082	8.1	0.3	1.03
	Nephritis, Nephrotic Syndrome & Nephrosis	576	8.7	983	7.4	-1.3	0.85
	COPD	570	8.6	922	6.9	-1.7	0.80
	Septicemia	362	5.5	896	6.7	1.3	1.23
	Pneumonia & Influenza	380	5.8	783	5.9	0.1	1.02
	Hypertension without Heart Disease	244	3.7	430	3.2	-0.5	0.87
	Suicide & Self-Inflicted Injury	152	2.2	405	3.0	0.8	1.35
	HIV	298	4.4	319	2.4	-2.0	0.54

	Ill-Defined Conditions	239	3.6	318	2.4	-1.2	0.67
	In situ, benign or unknown behavior neoplasm	162	2.4	227	1.7	-0.7	0.70
	Homicide & Legal Intervention	149	2.2	175	1.3	-0.9	0.59
	Congenital Anomalies	78	1.2	144	1.1	-0.1	0.92
	Alzheimers (ICD-9 & 10 only)	48	0.7	143	1.1	0.3	1.47
	Other Diseases of Arteries, Arterioles, Capillaries	112	1.7	131	1.0	-0.7	0.58
	Aortic Aneurysm & Dissection	91	1.4	79	0.6	-0.8	0.43
	Stomach & Duodenal Ulcers	33	0.5	53	0.4	-0.1	0.80
	Complications of Pregnancy, Childbirth, Puerperium	0	0.0	37	0.3	0.3	n.e.
	Atherosclerosis	44	0.7	33	0.3	-0.4	0.38
	Tuberculosis	37	0.6	26	0.2	-0.4	0.35
	Syphilis	0	0.0	0	0.0	0.0	n.e.
	Perinatal Period	0	0.0	0	0.0	0.0	n.e.
	Other Cause of Death	3,002	45.2	6,068	45.6	0.4	1.01
<b>Black Men</b>							
<b>25-39</b>	All Causes of Death	46,469	311.5	38,847	249.1	-62.4	0.80
	Homicide & Legal Intervention	10,259	67.1	11,171	68.1	1.0	1.01
	Accidents & Adverse Effects	8,117	54.0	7,490	47.4	-6.7	0.88
	Diseases of Heart	5,164	35.1	4,903	33.4	-1.7	0.95
	Suicide & Self-Inflicted Injury	2,442	16.1	2,562	16.0	-0.2	0.99
	All Malignant Cancers	2,576	17.5	2,090	14.0	-3.5	0.80
	HIV	6,906	47.0	1,659	10.8	-36.3	0.23
	Diabetes Mellitus	856	5.8	877	5.9	0.1	1.02
	Cerebrovascular Diseases	759	5.2	684	4.7	-0.5	0.91
	Ill-Defined Conditions	1,209	8.1	681	4.4	-3.8	0.54
	COPD	475	3.2	410	2.7	-0.5	0.84
	Nephritis, Nephrotic Syndrome & Nephrosis	442	3.0	396	2.7	-0.3	0.90
	Pneumonia & Influenza	427	2.9	331	2.2	-0.7	0.75
	Septicemia	397	2.7	319	2.1	-0.6	0.79
	Hypertension without Heart Disease	230	1.6	268	1.9	0.3	1.18
	Congenital Anomalies	226	1.5	210	1.3	-0.2	0.89
	Chronic Liver Disease/Cirrhosis	395	2.7	194	1.3	-1.4	0.49
	Aortic Aneurysm & Dissection	150	1.0	192	1.3	0.3	1.30
	Other Infectious & Parasitic Diseases	357	2.4	189	1.2	-1.2	0.51
	In situ, benign or unknown behavior neoplasm	99	0.7	84	0.5	-0.1	0.81
	Other Diseases of Arteries, Arterioles, Capillaries	40	0.3	42	0.3	0.0	1.03
	Stomach & Duodenal Ulcers	58	0.4	33	0.2	-0.2	0.57
	Tuberculosis	37	0.3	10	0.1	-0.2	0.25
	Syphilis	^	^	0	0.0	n.e.	n.e.
	Perinatal Period	0	0.0	0	0.0	0.0	n.e.
	Alzheimers (ICD-9 & 10 only)	^	^	^	^	n.e.	n.e.
	Atherosclerosis	^	^	^	^	n.e.	n.e.
	Other Cause of Death	4,828	32.6	4,043	26.5	-6.1	0.81
<b>40-49</b>	All Causes of Death	65,378	691.0	46,467	450.6	-240.5	0.65
	Diseases of Heart	13,718	145.2	11,806	114.2	-31.0	0.79
	All Malignant Cancers	10,012	106.2	6,407	61.2	-45.0	0.58
	Accidents & Adverse Effects	6,856	72.3	5,426	53.1	-19.1	0.74
	Homicide & Legal Intervention	3,121	32.8	3,054	30.3	-2.4	0.93
	HIV	8,414	88.6	2,489	24.2	-64.4	0.27
	Diabetes Mellitus	1,831	19.4	2,032	19.7	0.3	1.01
	Cerebrovascular Diseases	2,656	28.1	1,994	19.2	-8.9	0.68
	Suicide & Self-Inflicted Injury	1,082	11.4	1,222	12.1	0.7	1.06
	Nephritis, Nephrotic Syndrome & Nephrosis	1,120	11.9	950	9.2	-2.7	0.78
	Chronic Liver Disease/Cirrhosis	1,973	20.9	844	8.1	-12.8	0.39
	Hypertension without Heart Disease	666	7.0	758	7.3	0.3	1.04
	Septicemia	858	9.1	727	7.0	-2.1	0.77
	Ill-Defined Conditions	1,454	15.4	660	6.4	-8.9	0.42

	COPD	778	8.2	636	6.2	-2.1	0.75
	Pneumonia & Influenza	907	9.6	578	5.6	-4.0	0.58
	Other Infectious & Parasitic Diseases	1,068	11.3	422	4.0	-7.3	0.36
	Aortic Aneurysm & Dissection	376	4.0	380	3.7	-0.2	0.94
	In situ, benign or unknown behavior neoplasm	145	1.5	138	1.3	-0.2	0.88
	Congenital Anomalies	194	2.0	138	1.4	-0.7	0.66
	Other Diseases of Arteries, Arterioles, Capillaries	97	1.0	92	0.9	-0.2	0.85
	Stomach & Duodenal Ulcers	132	1.4	60	0.6	-0.8	0.41
	Atherosclerosis	48	0.5	27	0.3	-0.2	0.52
	Tuberculosis	95	1.0	20	0.2	-0.8	0.19
	Complications of Pregnancy, Childbirth, Puerperium	0	0.0	0	0.0	0.0	n.e.
	Syphilis	^	^	^	^	n.e.	n.e.
	Alzheimers (ICD-9 & 10 only)	^	^	^	^	n.e.	n.e.
	Perinatal Period	^	^	^	^	n.e.	n.e.
	Other Cause of Death	7,770	82.1	5,596	54.3	-27.9	0.66
<b>50-64</b>	All Causes of Death	133,803	1728.4	176,472	1334.6	-393.7	0.77
	All Malignant Cancers	37,628	488.9	47,991	361.7	-127.2	0.74
	Diseases of Heart	38,742	501.9	46,733	353.5	-148.4	0.70
	Accidents & Adverse Effects	5,585	70.9	9,843	75.0	4.1	1.06
	Cerebrovascular Diseases	7,195	93.1	8,513	64.4	-28.8	0.69
	Diabetes Mellitus	5,656	73.4	8,109	61.2	-12.1	0.83
	HIV	4,646	58.3	4,495	34.3	-23.9	0.59
	Chronic Liver Disease/Cirrhosis	3,141	40.0	4,468	33.8	-6.2	0.85
	Nephritis, Nephrotic Syndrome & Nephrosis	2,852	36.9	4,320	32.6	-4.3	0.88
	COPD	3,053	39.9	4,279	32.2	-7.7	0.81
	Septicemia	2,291	29.7	3,250	24.6	-5.1	0.83
	Hypertension without Heart Disease	1,658	21.4	2,859	21.6	0.2	1.01
	Other Infectious & Parasitic Diseases	1,393	17.6	2,853	21.5	3.8	1.22
	Pneumonia & Influenza	1,784	23.1	2,383	18.0	-5.1	0.78
	Homicide & Legal Intervention	1,443	18.2	2,213	17.0	-1.1	0.94
	Ill-Defined Conditions	1,719	21.9	1,756	13.3	-8.6	0.61
	Suicide & Self-Inflicted Injury	700	8.9	1,227	9.4	0.5	1.06
	Aortic Aneurysm & Dissection	719	9.3	737	5.6	-3.7	0.60
	Other Diseases of Arteries, Arterioles, Capillaries	397	5.2	550	4.1	-1.0	0.80
	In situ, benign or unknown behavior neoplasm	410	5.3	546	4.1	-1.2	0.77
	Congenital Anomalies	175	2.2	262	2.0	-0.2	0.90
	Stomach & Duodenal Ulcers	281	3.6	235	1.8	-1.8	0.49
	Atherosclerosis	244	3.2	186	1.4	-1.8	0.44
	Alzheimers (ICD-9 & 10 only)	71	0.9	157	1.2	0.2	1.25
	Tuberculosis	170	2.2	88	0.7	-1.5	0.30
	Syphilis	11	0.1	15	0.1	0.0	0.82
	Complications of Pregnancy, Childbirth, Puerperium	0	0.0	0	0.0	0.0	n.e.
	Perinatal Period	0	0.0	^	^	0.0	n.e.
	Other Cause of Death	11,839	152.2	18,402	139.3	-12.8	0.92
<b>Women</b>							
<b>25-39</b>	All Causes of Death	26,693	160.8	20,431	122.9	-37.8	0.76
	All Malignant Cancers	3,990	24.3	3,149	19.5	-4.7	0.81
	Diseases of Heart	3,325	20.1	2,952	18.2	-1.9	0.91
	Accidents & Adverse Effects	2,852	17.0	2,778	16.2	-0.9	0.95
	Homicide & Legal Intervention	2,084	12.4	1,367	7.7	-4.6	0.63
	HIV	4,021	24.2	1,151	7.1	-17.1	0.29
	Diabetes Mellitus	661	4.0	751	4.5	0.5	1.14
	Complications of Pregnancy, Childbirth, Puerperium	364	2.2	617	3.5	1.4	1.65
	Cerebrovascular Diseases	885	5.4	565	3.5	-1.9	0.65
	Suicide & Self-Inflicted Injury	398	2.4	501	2.9	0.5	1.22
	Ill-Defined Conditions	788	4.7	462	2.7	-2.0	0.58

	Nephritis, Nephrotic Syndrome & Nephrosis	436	2.6	358	2.2	-0.4	0.83
	Septicemia	418	2.5	334	2.0	-0.5	0.80
	COPD	444	2.7	318	1.9	-0.7	0.72
	Pneumonia & Influenza	348	2.1	315	1.9	-0.2	0.90
	Chronic Liver Disease/Cirrhosis	281	1.7	204	1.3	-0.4	0.75
	Hypertension without Heart Disease	199	1.2	180	1.1	-0.1	0.91
	Congenital Anomalies	221	1.3	162	0.9	-0.4	0.71
	Other Infectious & Parasitic Diseases	314	1.9	121	0.7	-1.2	0.39
	In situ, benign or unknown behavior neoplasm	113	0.7	105	0.7	0.0	0.96
	Aortic Aneurysm & Dissection	53	0.3	59	0.4	0.0	1.14
	Other Diseases of Arteries, Arterioles, Capillaries	58	0.4	43	0.3	-0.1	0.74
	Stomach & Duodenal Ulcers	26	0.2	10	0.1	-0.1	0.39
	Syphilis	^	^	0	0.0	n.e.	n.e.
	Alzheimers (ICD-9 & 10 only)	0	0.0	0	0.0	0.0	n.e.
	Tuberculosis	31	0.2	^	^	n.e.	n.e.
	Atherosclerosis	10	0.1	^	^	n.e.	n.e.
	Perinatal Period	^	^	^	^	n.e.	n.e.
	Other Cause of Death	4,370	26.3	3,913	23.5	-2.8	0.89
<b>40-49</b>	All Causes of Death	45,198	417.3	35,189	303.3	-114.1	0.73
	All Malignant Cancers	11,484	106.1	9,235	79.2	-27.0	0.75
	Diseases of Heart	8,500	78.6	6,712	57.7	-20.9	0.73
	Accidents & Adverse Effects	2,593	23.9	2,544	22.1	-1.8	0.93
	Cerebrovascular Diseases	2,707	25.0	1,619	13.9	-11.1	0.56
	HIV	3,656	33.6	1,557	13.6	-20.1	0.40
	Diabetes Mellitus	1,487	13.8	1,491	12.8	-0.9	0.93
	Nephritis, Nephrotic Syndrome & Nephrosis	804	7.4	730	6.3	-1.1	0.85
	Septicemia	797	7.4	720	6.2	-1.2	0.84
	COPD	848	7.8	707	6.0	-1.8	0.77
	Homicide & Legal Intervention	962	8.8	685	6.0	-2.8	0.68
	Chronic Liver Disease/Cirrhosis	1,049	9.7	671	5.7	-4.0	0.59
	Pneumonia & Influenza	592	5.5	494	4.3	-1.2	0.78
	Hypertension without Heart Disease	481	4.4	489	4.2	-0.2	0.95
	Ill-Defined Conditions	913	8.4	428	3.7	-4.7	0.44
	Suicide & Self-Inflicted Injury	315	2.9	388	3.4	0.5	1.18
	Other Infectious & Parasitic Diseases	575	5.3	283	2.4	-2.9	0.46
	Complications of Pregnancy, Childbirth, Puerperium	45	0.4	191	1.7	1.3	4.14
	In situ, benign or unknown behavior neoplasm	198	1.8	164	1.4	-0.4	0.77
	Aortic Aneurysm & Dissection	169	1.6	124	1.1	-0.5	0.68
	Congenital Anomalies	153	1.4	120	1.0	-0.4	0.74
	Other Diseases of Arteries, Arterioles, Capillaries	134	1.2	80	0.7	-0.5	0.56
	Stomach & Duodenal Ulcers	69	0.6	28	0.2	-0.4	0.37
	Atherosclerosis	29	0.3	23	0.2	-0.1	0.71
	Tuberculosis	29	0.3	13	0.1	-0.2	0.43
	Syphilis	^	^	0	0.0	n.e.	n.e.
	Alzheimers (ICD-9 & 10 only)	^	^	^	^	n.e.	n.e.
	Perinatal Period	0	0.0	^	^	n.e.	n.e.
	Other Cause of Death	6,602	60.9	5,685	49.2	-11.7	0.81
<b>50-64</b>	All Causes of Death	95,790	1014.2	127,287	814.8	-199.3	0.80
	All Malignant Cancers	30,504	323.2	42,059	268.7	-54.4	0.83
	Diseases of Heart	24,542	260.2	27,553	176.0	-84.1	0.68
	Diabetes Mellitus	5,924	62.8	6,480	41.3	-21.6	0.66
	Cerebrovascular Diseases	5,927	62.7	6,446	41.3	-21.4	0.66
	Accidents & Adverse Effects	2,020	21.2	4,162	27.2	5.9	1.28
	COPD	2,502	26.5	4,121	26.2	-0.3	0.99
	Nephritis, Nephrotic Syndrome & Nephrosis	2,681	28.4	3,431	21.8	-6.6	0.77
	Septicemia	2,123	22.5	2,996	19.1	-3.4	0.85
	Chronic Liver Disease/Cirrhosis	1,391	14.7	2,237	14.5	-0.2	0.98

	Hypertension without Heart Disease	1,445	15.3	2,065	13.2	-2.1	0.86
	HIV	1,448	15.1	2,005	13.2	-1.9	0.87
	Pneumonia & Influenza	1,110	11.8	1,843	11.8	0.0	1.00
	Other Infectious & Parasitic Diseases	840	8.9	1,631	10.4	1.5	1.17
	Ill-Defined Conditions	923	9.7	1,125	7.2	-2.5	0.75
	Homicide & Legal Intervention	366	3.8	519	3.5	-0.4	0.90
	In situ, benign or unknown behavior neoplasm	391	4.1	505	3.2	-0.9	0.78
	Other Diseases of Arteries, Arterioles, Capillaries	386	4.1	403	2.5	-1.6	0.62
	Aortic Aneurysm & Dissection	333	3.5	362	2.3	-1.2	0.66
	Suicide & Self-Inflicted Injury	198	2.1	343	2.3	0.2	1.09
	Congenital Anomalies	175	1.9	259	1.7	-0.2	0.90
	Alzheimers (ICD-9 & 10 only)	56	0.6	169	1.0	0.4	1.75
	Stomach & Duodenal Ulcers	118	1.3	140	0.9	-0.4	0.72
	Atherosclerosis	174	1.8	118	0.7	-1.1	0.40
	Complications of Pregnancy, Childbirth, Puerperium	0	0.0	86	0.6	0.6	n.e.
	Tuberculosis	51	0.5	29	0.2	-0.4	0.34
	Syphilis	^	^	^	^	n.e.	n.e.
	Perinatal Period	0	0.0	^	^	n.e.	n.e.
	Other Cause of Death	10,160	107.3	16,194	103.9	-3.4	0.97
<b>Asian/Pacific Islanders</b>							
<b>Men</b>							
<b>25-39</b>	All Causes of Death	4,148	68.1	4,984	60.1	-8.1	0.88
	Accidents & Adverse Effects	949	15.1	1,176	13.8	-1.3	0.91
	Suicide & Self-Inflicted Injury	631	10.0	957	11.3	1.3	1.13
	All Malignant Cancers	682	11.5	732	9.0	-2.5	0.78
	Diseases of Heart	477	8.2	646	8.1	-0.1	0.99
	Homicide & Legal Intervention	372	5.9	301	3.5	-2.4	0.59
	Cerebrovascular Diseases	139	2.5	127	1.6	-0.8	0.66
	Ill-Defined Conditions	140	2.3	98	1.2	-1.1	0.50
	Chronic Liver Disease/Cirrhosis	57	1.0	88	1.1	0.1	1.11
	Diabetes Mellitus	34	0.6	60	0.8	0.2	1.26
	Other Infectious & Parasitic Diseases	64	1.1	55	0.7	-0.4	0.64
	HIV	90	1.5	49	0.6	-0.9	0.38
	Congenital Anomalies	39	0.6	42	0.5	-0.1	0.78
	Pneumonia & Influenza	29	0.5	40	0.5	0.0	1.01
	COPD	30	0.5	37	0.5	0.0	0.91
	Septicemia	21	0.3	32	0.4	0.1	1.16
	Nephritis, Nephrotic Syndrome & Nephrosis	21	0.4	32	0.4	0.0	1.10
	Aortic Aneurysm & Dissection	17	0.3	28	0.3	0.1	1.18
	In situ, benign or unknown behavior neoplasm	26	0.4	24	0.3	-0.1	0.70
	Hypertension without Heart Disease	10	0.2	13	0.2	0.0	1.03
	Syphilis	0	0.0	0	0.0	0.0	n.e.
	Alzheimers (ICD-9 & 10 only)	0	0.0	0	0.0	0.0	n.e.
	Atherosclerosis	^	^	0	0.0	n.e.	n.e.
	Complications of Pregnancy, Childbirth, Puerperium	0	0.0	0	0.0	0.0	n.e.
	Perinatal Period	^	^	0	0.0	n.e.	n.e.
	Tuberculosis	14	0.2	^	^	n.e.	n.e.
	Other Diseases of Arteries, Arterioles, Capillaries	^	^	^	^	n.e.	n.e.
	Stomach & Duodenal Ulcers	^	^	^	^	n.e.	n.e.
	Other Cause of Death	297	4.9	425	5.2	0.3	1.05
<b>40-49</b>	All Causes of Death	5,382	159.8	6,843	137.6	-22.2	0.86
	All Malignant Cancers	1,571	46.7	1,779	35.8	-10.9	0.77
	Diseases of Heart	1,189	35.3	1,554	31.3	-4.1	0.88
	Accidents & Adverse Effects	488	14.5	735	14.8	0.3	1.02
	Suicide & Self-Inflicted Injury	295	8.8	530	10.7	1.9	1.22
	Cerebrovascular Diseases	312	9.3	395	7.9	-1.3	0.86
	Diabetes Mellitus	100	3.0	218	4.4	1.4	1.48

	Chronic Liver Disease/Cirrhosis	161	4.8	218	4.4	-0.4	0.92
	Homicide & Legal Intervention	199	5.9	138	2.8	-3.1	0.47
	Other Infectious & Parasitic Diseases	148	4.4	100	2.0	-2.4	0.46
	Ill-Defined Conditions	112	3.3	85	1.7	-1.6	0.51
	HIV	91	2.7	72	1.4	-1.2	0.54
	Pneumonia & Influenza	41	1.2	71	1.4	0.2	1.17
	Nephritis, Nephrotic Syndrome & Nephrosis	36	1.1	68	1.4	0.3	1.28
	COPD	46	1.4	53	1.1	-0.3	0.78
	Hypertension without Heart Disease	30	0.9	52	1.0	0.2	1.17
	Aortic Aneurysm & Dissection	42	1.2	50	1.0	-0.2	0.81
	Septicemia	52	1.5	46	0.9	-0.6	0.60
	In situ, benign or unknown behavior neoplasm	31	0.9	43	0.9	-0.1	0.94
	Congenital Anomalies	22	0.7	29	0.6	-0.1	0.89
	Tuberculosis	12	0.4	16	0.3	0.0	0.90
	Stomach & Duodenal Ulcers	^	^	15	0.3	n.e.	n.e.
	Other Diseases of Arteries, Arterioles, Capillaries	^	^	11	0.2	n.e.	n.e.
	Syphilis	0	0.0	0	0.0	0.0	n.e.
	Complications of Pregnancy, Childbirth, Puerperium	0	0.0	0	0.0	0.0	n.e.
	Perinatal Period	0	0.0	0	0.0	0.0	n.e.
	Alzheimers (ICD-9 & 10 only)	^	^	^	^	n.e.	n.e.
	Atherosclerosis	^	^	^	^	n.e.	n.e.
	Other Cause of Death	381	11.3	562	11.3	0.0	1.00
<b>50-64</b>	All Causes of Death	14,245	488.3	22,969	407.6	-80.7	0.83
	All Malignant Cancers	5,132	176.2	8,300	146.8	-29.4	0.83
	Diseases of Heart	3,823	131.2	5,499	97.7	-33.6	0.74
	Cerebrovascular Diseases	1,006	34.6	1,353	24.0	-10.6	0.69
	Diabetes Mellitus	525	18.0	1,021	18.0	0.0	1.00
	Accidents & Adverse Effects	540	18.3	1,008	18.1	-0.2	0.99
	Suicide & Self-Inflicted Injury	293	9.9	652	11.8	1.9	1.19
	Chronic Liver Disease/Cirrhosis	259	8.8	523	9.4	0.5	1.06
	Other Infectious & Parasitic Diseases	329	11.2	418	7.4	-3.8	0.66
	COPD	266	9.2	338	5.9	-3.2	0.65
	Pneumonia & Influenza	164	5.6	325	5.7	0.1	1.01
	Nephritis, Nephrotic Syndrome & Nephrosis	190	6.6	295	5.2	-1.4	0.79
	Hypertension without Heart Disease	90	3.1	242	4.3	1.2	1.39
	Septicemia	109	3.7	232	4.1	0.4	1.09
	Aortic Aneurysm & Dissection	126	4.3	182	3.2	-1.1	0.75
	Ill-Defined Conditions	109	3.7	162	2.9	-0.8	0.79
	Homicide & Legal Intervention	157	5.3	155	2.8	-2.4	0.54
	In situ, benign or unknown behavior neoplasm	64	2.2	115	2.0	-0.2	0.92
	HIV	67	2.2	64	1.2	-1.1	0.52
	Tuberculosis	40	1.4	58	1.0	-0.4	0.75
	Stomach & Duodenal Ulcers	26	0.9	50	0.9	0.0	1.01
	Congenital Anomalies	26	0.9	39	0.7	-0.2	0.81
	Other Diseases of Arteries, Arterioles, Capillaries	35	1.2	38	0.7	-0.5	0.56
	Atherosclerosis	18	0.6	20	0.4	-0.2	0.59
	Alzheimers (ICD-9 & 10 only)	^	^	18	0.3	n.e.	n.e.
	Syphilis	0	0.0	0	0.0	0.0	n.e.
	Complications of Pregnancy, Childbirth, Puerperium	0	0.0	0	0.0	0.0	n.e.
	Perinatal Period	^	^	0	0.0	n.e.	n.e.
	Other Cause of Death	844	29.0	1,862	33.0	4.0	1.14
<b>Women</b>	All Causes of Death	2,294	35.9	2,788	30.7	-5.2	0.86
<b>25-39</b>	All Malignant Cancers	718	11.6	869	9.8	-1.75	0.85
	Accidents & Adverse Effects	390	5.9	384	4.1	-1.83	0.69
	Suicide & Self-Inflicted Injury	220	3.3	377	4.1	0.8	1.24
	Diseases of Heart	148	2.3	171	1.9	-0.5	0.80
	Homicide & Legal Intervention	188	2.9	115	1.2	-1.6	0.44



	Cerebrovascular Diseases	82	1.3	101	1.1	-0.2	0.84
	Complications of Pregnancy, Childbirth, Puerperium	49	0.8	87	1.0	0.2	1.26
	Diabetes Mellitus	18	0.3	46	0.5	0.2	1.77
	Ill-Defined Conditions	42	0.6	43	0.5	-0.2	0.75
	Chronic Liver Disease/Cirrhosis	17	0.3	29	0.3	0.0	1.17
	Pneumonia & Influenza	17	0.3	27	0.3	0.0	1.12
	Septicemia	16	0.3	25	0.3	0.0	1.06
	Nephritis, Nephrotic Syndrome & Nephrosis	19	0.3	24	0.3	0.0	0.90
	Other Infectious & Parasitic Diseases	19	0.3	23	0.3	0.0	0.84
	Congenital Anomalies	27	0.4	23	0.2	-0.2	0.60
	In situ, benign or unknown behavior neoplasm	22	0.3	17	0.2	-0.1	0.57
	COPD	19	0.3	16	0.2	-0.1	0.60
	HIV	15	0.2	11	0.1	-0.1	0.53
	Syphilis	0	0.0	0	0.0	0.0	n.e.
	Alzheimers (ICD-9 & 10 only)	0	0.0	0	0.0	0.0	n.e.
	Stomach & Duodenal Ulcers	^	^	0	0.0	n.e.	n.e.
	Tuberculosis	^	^	^	^	n.e.	n.e.
	Hypertension without Heart Disease	^	^	^	^	n.e.	n.e.
	Atherosclerosis	0	0.0	^	^	n.e.	n.e.
	Aortic Aneurysm & Dissection	^	^	^	^	n.e.	n.e.
	Other Diseases of Arteries, Arterioles, Capillaries	^	^	^	^	n.e.	n.e.
	Perinatal Period	^	^	^	^	n.e.	n.e.
	Other Cause of Death	241	3.8	368	4.0	0.2	1.06
<b>40-49</b>	All Causes of Death	3,742	98.3	4,496	80.1	-18.2	0.81
	All Malignant Cancers	1,857	48.8	2,278	40.6	-8.2	0.83
	Diseases of Heart	329	8.6	377	6.7	-1.9	0.78
	Cerebrovascular Diseases	285	7.5	307	5.5	-2.0	0.73
	Accidents & Adverse Effects	283	7.4	257	4.6	-2.9	0.61
	Suicide & Self-Inflicted Injury	132	3.5	224	4.0	0.5	1.15
	Diabetes Mellitus	68	1.8	86	1.5	-0.2	0.86
	Homicide & Legal Intervention	91	2.4	74	1.3	-1.1	0.55
	Septicemia	33	0.9	62	1.1	0.2	1.27
	Chronic Liver Disease/Cirrhosis	44	1.2	61	1.1	-0.1	0.94
	Pneumonia & Influenza	33	0.9	55	1.0	0.1	1.13
	Other Infectious & Parasitic Diseases	54	1.4	49	0.9	-0.5	0.62
	Nephritis, Nephrotic Syndrome & Nephrosis	28	0.7	42	0.7	0.0	1.02
	COPD	45	1.2	39	0.7	-0.5	0.59
	In situ, benign or unknown behavior neoplasm	19	0.5	29	0.5	0.0	1.03
	Ill-Defined Conditions	47	1.2	26	0.5	-0.8	0.37
	Hypertension without Heart Disease	21	0.5	21	0.4	-0.2	0.68
	Aortic Aneurysm & Dissection	11	0.3	21	0.4	0.1	1.30
	Congenital Anomalies	22	0.6	21	0.4	-0.2	0.64
	Complications of Pregnancy, Childbirth, Puerperium	^	^	20	0.4	n.e.	n.e.
	HIV	20	0.5	14	0.2	-0.3	0.47
	Syphilis	0	0.0	0	0.0	0.0	n.e.
	Stomach & Duodenal Ulcers	^	^	0	0.0	n.e.	n.e.
	Perinatal Period	0	0.0	0	0.0	0.0	n.e.
	Tuberculosis	^	^	^	^	n.e.	n.e.
	Alzheimers (ICD-9 & 10 only)	^	^	^	^	n.e.	n.e.
	Atherosclerosis	^	^	^	^	n.e.	n.e.
	Other Diseases of Arteries, Arterioles, Capillaries	^	^	^	^	n.e.	n.e.
	Other Cause of Death	287	7.5	415	7.4	-0.2	0.98
<b>50-64</b>	All Causes of Death	10,127	304.2	15,871	235.7	-68.4	0.78
	All Malignant Cancers	4,746	142.0	8,075	120.3	-21.8	0.85
	Diseases of Heart	1,570	47.6	2,000	29.3	-18.3	0.62
	Cerebrovascular Diseases	910	27.4	1,088	16.2	-11.2	0.59
	Diabetes Mellitus	363	11.0	578	8.5	-2.6	0.77

	Accidents & Adverse Effects	383	11.3	573	8.7	-2.6	0.77
	Suicide & Self-Inflicted Injury	124	3.6	285	4.4	0.8	1.22
	Other Infectious & Parasitic Diseases	225	6.8	231	3.4	-3.4	0.50
	Pneumonia & Influenza	99	3.0	224	3.3	0.3	1.09
	Nephritis, Nephrotic Syndrome & Nephrosis	168	5.1	216	3.2	-1.9	0.63
	COPD	154	4.7	208	3.0	-1.7	0.65
	Chronic Liver Disease/Cirrhosis	117	3.5	171	2.5	-1.0	0.73
	Septicemia	110	3.3	165	2.4	-0.9	0.73
	Hypertension without Heart Disease	71	2.1	134	2.0	-0.2	0.92
	In situ, benign or unknown behavior neoplasm	53	1.6	107	1.6	0.0	1.00
	Ill-Defined Conditions	71	2.1	94	1.4	-0.7	0.67
	Homicide & Legal Intervention	65	1.9	87	1.3	-0.6	0.69
	Aortic Aneurysm & Dissection	42	1.2	74	1.1	-0.2	0.87
	Other Diseases of Arteries, Arterioles, Capillaries	26	0.8	35	0.5	-0.3	0.67
	Congenital Anomalies	24	0.7	32	0.5	-0.2	0.69
	Tuberculosis	15	0.5	29	0.4	0.0	0.94
	Alzheimers (ICD-9 & 10 only)	20	0.6	28	0.4	-0.2	0.65
	Stomach & Duodenal Ulcers	17	0.5	17	0.3	-0.3	0.49
	HIV	^	^	16	0.2	n.e.	n.e.
	Syphilis	0	0.0	0	0.0	0.0	n.e.
	Perinatal Period	0	0.0	0	0.0	0.0	n.e.
	Atherosclerosis	^	^	^	^	n.e.	n.e.
	Complications of Pregnancy, Childbirth, Puerperium	0	0.0	^	^	n.e.	n.e.
	Other Cause of Death	739	22.3	1,399	20.7	-1.6	0.93
	All Causes of Death	4,148	68.1	4,984	60.1	-8.1	0.88
<b>American Indian/Alaska Natives</b>							
<b>Men</b>							
<b>25-39</b>	All Causes of Death	2,304	377.2	2,935	442.7	65.5	1.17
	Accidents & Adverse Effects	870	141.3	1,110	162.9	21.7	1.15
	Suicide & Self-Inflicted Injury	313	50.4	401	58.1	7.8	1.15
	Chronic Liver Disease/Cirrhosis	163	27.5	263	42.7	15.2	1.55
	Homicide & Legal Intervention	193	31.2	235	33.9	2.7	1.09
	Diseases of Heart	147	24.6	193	30.7	6.1	1.25
	All Malignant Cancers	87	14.4	91	14.0	-0.4	0.97
	Ill-Defined Conditions	53	8.7	76	11.1	2.5	1.29
	Diabetes Mellitus	33	5.6	73	12.3	6.8	2.21
	Pneumonia & Influenza	27	4.4	36	5.7	1.3	1.29
	Septicemia	17	2.8	28	4.6	1.8	1.65
	Other Infectious & Parasitic Diseases	10	1.7	21	3.5	1.8	2.03
	Cerebrovascular Diseases	13	2.2	18	2.8	0.6	1.29
	HIV	52	8.8	16	2.5	-6.2	0.29
	COPD	11	1.8	15	2.5	0.8	1.42
	Congenital Anomalies	^	^	15	2.2	n.e.	n.e.
	Syphilis	0	0.0	0	0.0	0.0	n.e.
	Alzheimers (ICD-9 & 10 only)	0	0.0	0	0.0	0.0	n.e.
	Atherosclerosis	0	0.0	0	0.0	0.0	n.e.
	Other Diseases of Arteries, Arterioles, Capillaries	^	^	0	0.0	n.e.	n.e.
	Complications of Pregnancy, Childbirth, Puerperium	0	0.0	0	0.0	0.0	n.e.
	In situ, benign or unknown behavior neoplasm	^	^	^	^	n.e.	n.e.
	Tuberculosis	^	^	^	^	n.e.	n.e.
	Hypertension without Heart Disease	^	^	^	^	n.e.	n.e.
	Aortic Aneurysm & Dissection	^	^	^	^	n.e.	n.e.
	COPD	^	^	^	^	n.e.	n.e.
	Stomach & Duodenal Ulcers	0	0.0	^	^	n.e.	n.e.
	Perinatal Period	0	0.0	^	^	n.e.	n.e.
	Other Cause of Death	292	48.2	321	49.4	1.1	1.02

<b>40-49</b>	All Causes of Death	2,395	635.1	3,034	755.1	120.0	1.19
	Accidents & Adverse Effects	504	133.4	705	176.5	43.1	1.32
	Diseases of Heart	351	93.3	472	116.7	23.4	1.25
	Chronic Liver Disease/Cirrhosis	310	82.2	399	99.4	17.2	1.21
	All Malignant Cancers	209	55.6	225	55.2	-0.4	0.99
	Suicide & Self-Inflicted Injury	106	28.0	197	49.8	21.8	1.78
	Diabetes Mellitus	105	28.1	170	42.2	14.1	1.50
	Homicide & Legal Intervention	84	22.2	106	26.7	4.6	1.21
	Ill-Defined Conditions	54	14.3	56	14.4	0.1	1.01
	Other Infectious & Parasitic Diseases	41	10.9	52	12.7	1.9	1.17
	Cerebrovascular Diseases	58	15.4	42	10.3	-5.0	0.67
	Pneumonia & Influenza	49	12.9	42	10.3	-2.6	0.80
	Septicemia	32	8.5	38	9.4	0.9	1.10
	HIV	52	13.7	31	7.7	-6.0	0.56
	Nephritis, Nephrotic Syndrome & Nephrosis	33	8.7	30	7.3	-1.4	0.84
	COPD	21	5.6	22	5.3	-0.3	0.95
	Hypertension without Heart Disease	^	^	15	3.6	n.e.	n.e.
	Congenital Anomalies	^	^	10	2.5	n.e.	n.e.
	Syphilis	0	0.0	0	0.0	0.0	n.e.
	Alzheimers (ICD-9 & 10 only)	^	^	0	0.0	n.e.	n.e.
	Complications of Pregnancy, Childbirth, Puerperium	0	0.0	0	0.0	0.0	n.e.
	Perinatal Period	0	0.0	0	0.0	0.0	n.e.
	In situ, benign or unknown behavior neoplasm	^	^	^	^	n.e.	n.e.
	Tuberculosis	^	^	^	^	n.e.	n.e.
	Atherosclerosis	^	^	^	^	n.e.	n.e.
	Aortic Aneurysm & Dissection	^	^	^	^	n.e.	n.e.
	Other Diseases of Arteries, Arterioles, Capillaries	^	^	^	^	n.e.	n.e.
	Stomach & Duodenal Ulcers	^	^	^	^	n.e.	n.e.
	Other Cause of Death	356	94.4	405	100.7	6.4	1.07
<b>50-64</b>	All Causes of Death	4,260	1317.5	7,261	1408.6	91.1	1.07
	Diseases of Heart	1,019	317.6	1,519	293.9	-23.6	0.93
	All Malignant Cancers	838	261.4	1,390	267.5	6.1	1.02
	Accidents & Adverse Effects	404	122.8	860	168.9	46.1	1.38
	Chronic Liver Disease/Cirrhosis	375	114.6	645	126.1	11.5	1.10
	Diabetes Mellitus	329	102.5	520	100.2	-2.3	0.98
	COPD	87	27.4	210	40.3	12.8	1.47
	Cerebrovascular Diseases	127	39.4	185	35.7	-3.7	0.91
	Other Infectious & Parasitic Diseases	45	13.6	152	29.4	15.8	2.16
	Suicide & Self-Inflicted Injury	71	21.3	123	24.2	2.9	1.14
	Pneumonia & Influenza	66	20.3	122	23.6	3.3	1.16
	Septicemia	62	19.0	121	23.5	4.5	1.24
	Nephritis, Nephrotic Syndrome & Nephrosis	79	24.5	101	19.5	-5.0	0.80
	Homicide & Legal Intervention	40	11.9	80	15.8	3.9	1.33
	Ill-Defined Conditions	68	20.7	73	14.3	-6.4	0.69
	Hypertension without Heart Disease	20	6.3	65	12.4	6.1	1.97
	HIV	14	4.1	27	5.3	1.2	1.29
	Stomach & Duodenal Ulcers	10	3.1	15	2.9	-0.2	0.95
	In situ, benign or unknown behavior neoplasm	^	^	13	2.5	n.e.	n.e.
	Congenital Anomalies	^	^	13	2.5	n.e.	n.e.
	Aortic Aneurysm & Dissection	10	3.1	12	2.4	-0.8	0.75
	Other Diseases of Arteries, Arterioles, Capillaries	12	3.7	12	2.3	-1.4	0.63
	Atherosclerosis	11	3.4	11	2.1	-1.2	0.64
	Syphilis	0	0.0	0	0.0	0.0	n.e.
	Complications of Pregnancy, Childbirth, Puerperium	0	0.0	0	0.0	0.0	n.e.
	Perinatal Period	0	0.0	0	0.0	0.0	n.e.
	Tuberculosis	^	^	^	^	n.e.	n.e.
	Alzheimers (ICD-9 & 10 only)	0	0.0	^	^	n.e.	n.e.
	Other Cause of Death	551	169.8	978	190.4	20.6	1.12

<b>Women</b>							
<b>25-39</b>	All Causes of Death	1,160	182.2	1,585	240.0	57.9	1.32
	Accidents & Adverse Effects	367	57.1	476	69.0	11.8	1.21
	Chronic Liver Disease/Cirrhosis	132	21.1	212	33.1	12.1	1.57
	Suicide & Self-Inflicted Injury	72	11.1	114	16.6	5.5	1.49
	Diseases of Heart	69	10.9	102	16.5	5.6	1.51
	All Malignant Cancers	111	17.6	101	16.0	-1.6	0.91
	Homicide & Legal Intervention	65	10.1	53	7.5	-2.5	0.75
	Ill-Defined Conditions	32	5.0	49	7.4	2.4	1.48
	Diabetes Mellitus	12	1.9	48	7.6	5.7	3.99
	Septicemia	16	2.6	34	5.3	2.7	2.07
	Complications of Pregnancy, Childbirth, Puerperium	^	^	29	4.4	n.e.	n.e.
	Cerebrovascular Diseases	29	4.6	23	3.4	-1.2	0.74
	Pneumonia & Influenza	18	2.8	21	3.2	0.4	1.14
	Other Infectious & Parasitic Diseases	^	^	16	2.5	n.e.	n.e.
	Nephritis, Nephrotic Syndrome & Nephrosis	10	1.6	10	1.4	-0.2	0.90
	Syphilis	0	0.0	0	0.0	0.0	n.e.
	Alzheimers (ICD-9 & 10 only)	0	0.0	0	0.0	0.0	n.e.
	Atherosclerosis	0	0.0	0	0.0	0.0	n.e.
	Stomach & Duodenal Ulcers	^	^	0	0.0	n.e.	n.e.
	Perinatal Period	0	0.0	0	0.0	0.0	n.e.
	In situ, benign or unknown behavior neoplasm	^	^	^	^	n.e.	n.e.
	Tuberculosis	^	^	^	^	n.e.	n.e.
	HIV	17	2.7	^	^	n.e.	n.e.
	Hypertension without Heart Disease	^	^	^	^	n.e.	n.e.
	Aortic Aneurysm & Dissection	^	^	^	^	n.e.	n.e.
	Other Diseases of Arteries, Arterioles, Capillaries	^	^	^	^	n.e.	n.e.
	COPD	^	^	^	^	n.e.	n.e.
	Congenital Anomalies	^	^	^	^	n.e.	n.e.
	Other Cause of Death	163	25.7	263	40.8	15.1	1.59
<b>40-49</b>	All Causes of Death	1,429	342.8	1,996	467.9	125.1	1.37
	Chronic Liver Disease/Cirrhosis	209	50.2	367	85.8	35.6	1.71
	Accidents & Adverse Effects	239	57.1	343	81.9	24.7	1.43
	All Malignant Cancers	232	55.8	253	58.4	2.6	1.05
	Diseases of Heart	121	29.1	203	47.6	18.5	1.64
	Diabetes Mellitus	64	15.4	101	23.5	8.0	1.52
	Cerebrovascular Diseases	70	16.8	52	12.0	-4.8	0.71
	Suicide & Self-Inflicted Injury	36	8.6	51	12.1	3.5	1.40
	Septicemia	23	5.6	48	11.0	5.5	1.99
	Pneumonia & Influenza	24	5.8	45	10.8	5.1	1.88
	Other Infectious & Parasitic Diseases	33	7.9	32	7.4	-0.5	0.93
	Nephritis, Nephrotic Syndrome & Nephrosis	25	6.0	31	7.3	1.3	1.21
	COPD	21	5.0	29	6.7	1.6	1.32
	Homicide & Legal Intervention	26	6.2	27	6.4	0.2	1.03
	Ill-Defined Conditions	22	5.3	25	5.8	0.5	1.10
	Syphilis	0	0.0	0	0.0	0.0	n.e.
	Alzheimers (ICD-9 & 10 only)	0	0.0	0	0.0	0.0	n.e.
	In situ, benign or unknown behavior neoplasm	^	^	^	^	n.e.	n.e.
	Tuberculosis	^	^	^	^	n.e.	n.e.
	HIV	11	2.6	^	^	n.e.	n.e.
	Hypertension without Heart Disease	^	^	^	^	n.e.	n.e.
	Atherosclerosis	^	^	^	^	n.e.	n.e.
	Aortic Aneurysm & Dissection	0	0.0	^	^	n.e.	n.e.
	Other Diseases of Arteries, Arterioles, Capillaries	^	^	^	^	n.e.	n.e.
	Stomach & Duodenal Ulcers	^	^	^	^	n.e.	n.e.
	Complications of Pregnancy, Childbirth, Puerperium	0	0.0	^	^	n.e.	n.e.
	Congenital Anomalies	^	^	^	^	n.e.	n.e.

	Perinatal Period	0	0.0	^	^	n.e.	n.e.
	Other Cause of Death	250	60.0	348	81.7	21.7	1.36
<b>50-64</b>	All Causes of Death	3,078	860.8	5,055	863.1	2.3	1.00
	All Malignant Cancers	804	225.2	1,206	205.3	-19.9	0.91
	Diseases of Heart	501	140.5	695	117.9	-22.6	0.84
	Chronic Liver Disease/Cirrhosis	232	64.3	503	87.5	23.2	1.36
	Diabetes Mellitus	315	88.4	420	71.1	-17.2	0.80
	Accidents & Adverse Effects	173	48.0	384	66.8	18.8	1.39
	COPD	110	31.2	231	39.0	7.8	1.25
	Cerebrovascular Diseases	129	36.1	156	26.5	-9.7	0.73
	Septicemia	62	17.4	111	18.9	1.5	1.09
	Other Infectious & Parasitic Diseases	40	11.2	109	18.7	7.4	1.66
	Nephritis, Nephrotic Syndrome & Nephrosis	88	24.8	106	17.8	-7.0	0.72
	Pneumonia & Influenza	44	12.3	104	17.9	5.5	1.45
	Ill-Defined Conditions	32	8.9	51	8.7	-0.2	0.98
	Hypertension without Heart Disease	11	3.2	37	6.2	3.0	1.97
	Suicide & Self-Inflicted Injury	18	5.0	36	6.2	1.2	1.24
	Other Diseases of Arteries, Arterioles, Capillaries	11	3.0	24	4.0	0.9	1.31
	In situ, benign or unknown behavior neoplasm	^	^	18	3.0	n.e.	n.e.
	HIV	^	^	17	2.9	n.e.	n.e.
	Alzheimers (ICD-9 & 10 only)	^	^	11	1.8	n.e.	n.e.
	Congenital Anomalies	^	^	11	1.9	n.e.	n.e.
	Homicide & Legal Intervention	20	5.5	11	1.8	-3.6	0.34
	Stomach & Duodenal Ulcers	^	^	10	1.7	n.e.	n.e.
	Syphilis	0	0.0	0	0.0	0.0	n.e.
	Tuberculosis	^	^	^	^	n.e.	n.e.
	Atherosclerosis	^	^	^	^	n.e.	n.e.
	Aortic Aneurysm & Dissection	^	^	^	^	n.e.	n.e.
	Complications of Pregnancy, Childbirth, Puerperium	0	0.0	^	^	n.e.	n.e.
	Perinatal Period	0	0.0	0	0.0	0.0	n.e.
	Other Cause of Death	442	123.0	787	134.4	11.4	1.09
	All Causes of Death	2,304	377.2	2,935	442.7	65.5	1.17

MR Underlying mortality data provided by NCHS ([www.cdc.gov/nchs](http://www.cdc.gov/nchs)).  
Mortality rate. Rates are per 100,000 & age-adjusted to the 2000 US Std Population.  
n.e. Not estimable.  
^ Statistic not displayed due to fewer than 10 cases.  
LL Lower limit of 95% confidence interval.  
UL Upper limit of 95% confidence interval.  
Rate ratios are age-adjusted and compare rates in 2011-2014 to 1999-2002

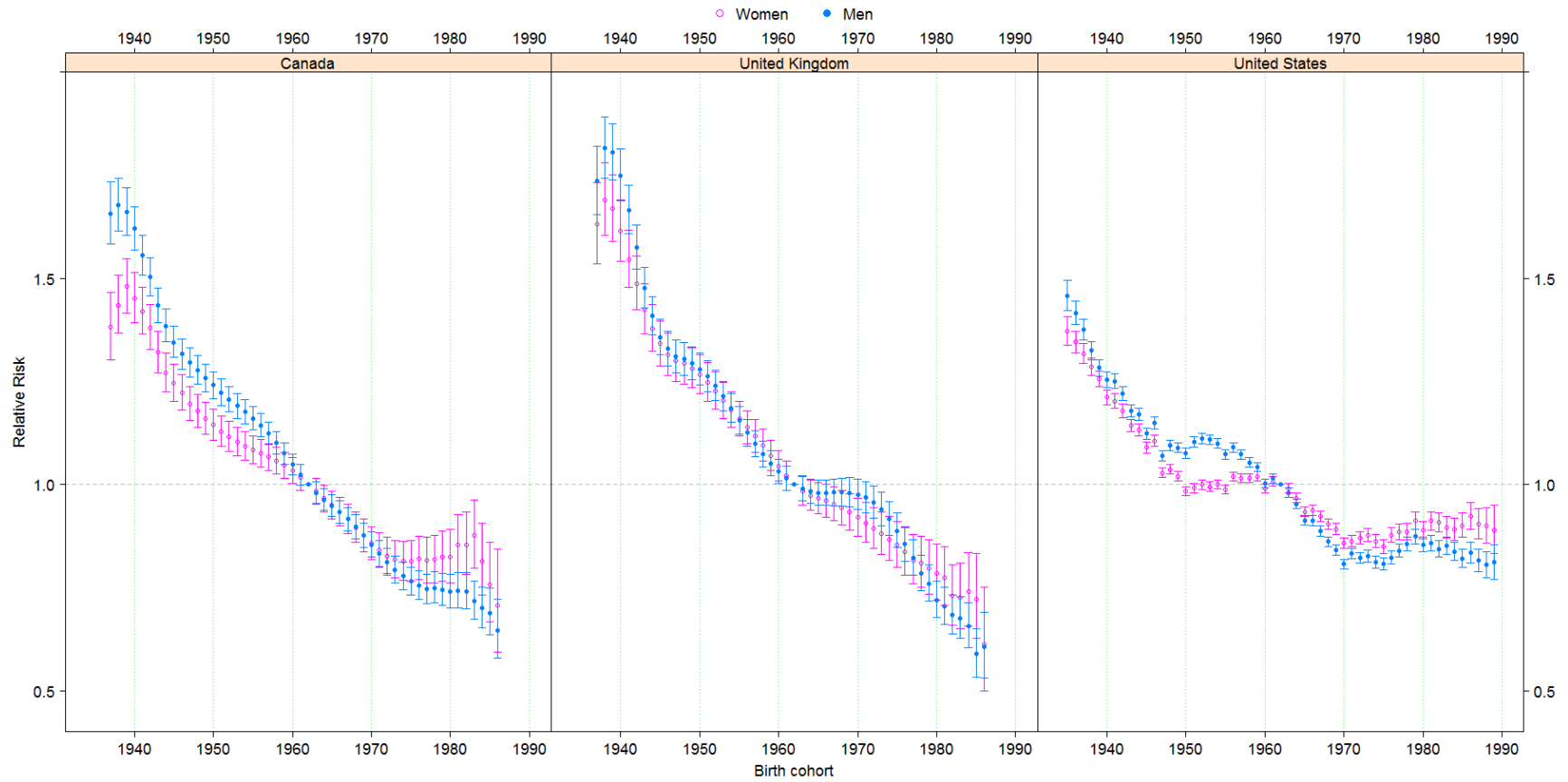
Table S5. ICD-10 codes for sub-categories of accidental deaths.

All accidents:	V01-X59, Y85-Y86
Motor vehicle accidents	V02-V04, V09.0, V09.2, V12-V14, V19.0-V19.2, V19.4-V19.6, V20-V79, V80.3-V80.5, V81.0-V81.1, V82.0-V82.1, V83-V86, V87.0-V87.8, V88.0-V88.8, V89.0, V89.2
Other transport accidents	V01, V05 V06, V09.1, V09.3 V09.9, V10 V11, V15 V18, V19.3, V19.8 V19.9, V80.0 V80.2, V80.6 V80.9, V81.2 V81.9, V82.2 V82.9, V87.9, V88.9, V89.1, V89.3, V89.9, V90 V99, Y85
Accidental poisoning and exposure to noxious substances	X40 X49
Other non-transport accidents	W00 X39, X50-X59, Y86

Supplemental Figure 1 legend. Birth cohort relative risks of mortality among 25-64 year-olds by sex in A) Canada, England/Wales, and the United States, and B) the United States by race and ethnicity. Points represent relative risks and lines represent confidence intervals. Relative risks represent mortality in any given birth year relative to 1962 (the mid-point of the birth cohorts included in the study).

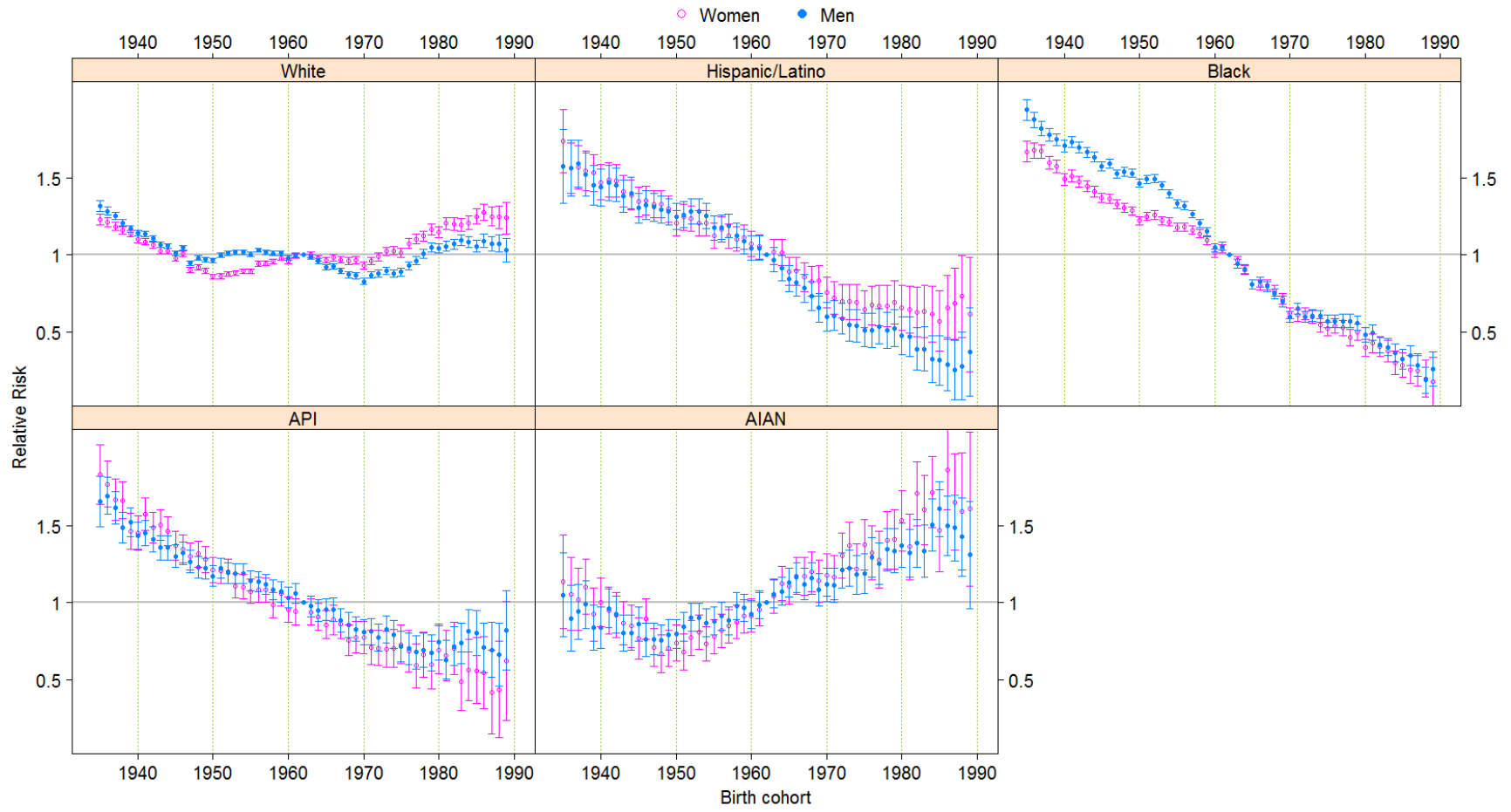
**Figure S1. Birth cohort relative risks of mortality among 25-64 year-olds by sex in A) Canada, England/Wales, and the United States, and B) the United States by race and ethnicity.**

A.





B.



**Figure S2. Age-adjusted mortality rates for deaths due to accidental poisonings by sex and race/ethnicity among 25-49 year-olds during 2011-2014.**

