

SUPPLEMENTARY INFORMATION

Insulin deprivation induces PP2A inhibition and tau hyperphosphorylation in hTau mice, a model of Alzheimer's disease-like tau pathology

Maud Gratuze ^{a,b}, Jacinthe Julien ^b, Franck R. Petry ^{a,b}, Françoise Morin ^b,
Emmanuel Planel ^{a,b,*}

a Université Laval, Faculté de médecine, Département de Psychiatrie et
Neurosciences, Québec, QC, Canada

b Centre de Recherche du CHU de Québec, Axe Neurosciences, Québec, QC,
Canada

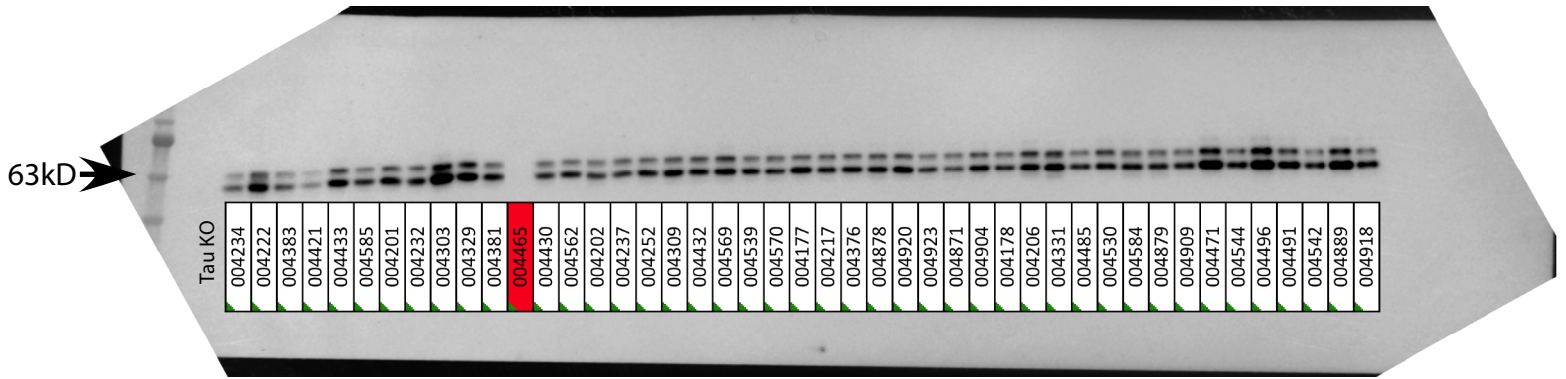
* Corresponding author at: CHUL, RC-9800, 2705 Boulevard Laurier, Québec, QC,
Canada, G1V 4G2. Tel. : +1 418 525 4444 #47805 ; fax : +1 418 654 2753.

E-mail adress: emmanuel@planel.org (E.Planel).

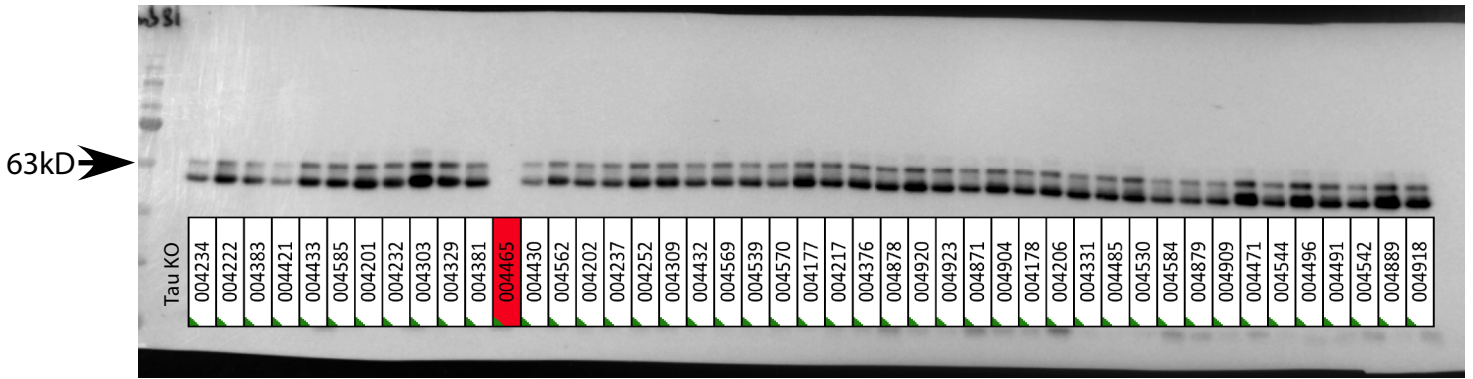
	ID souris	
CTL (Saline)	004234	
	004222	
	004383	
	004421	
	004433	
	004585	
STZ low dose (Saline)	004201	
	004232	
	004303	
	004329	
	004381	
	004465	← Tau KO
	004430	
STZ LD + Insuline 4IU/kg)	004562	
	004202	
	004237	
	004252	
	004309	
	004432	
	004569	
	004539	
STZ High dose	004570	
	004177	
	004217	
	004376	
	004878	
	004920	
	004923	
	004871	
STZ HD + Insuline	004904	
	004178	
	004206	
	004331	
	004485	
	004530	
	004584	
	004879	
STZ High dose hypothermique	004909	
	004471	
	004544	
	004496	
	004491	
	004542	
004889		
	004918	

Figure 2

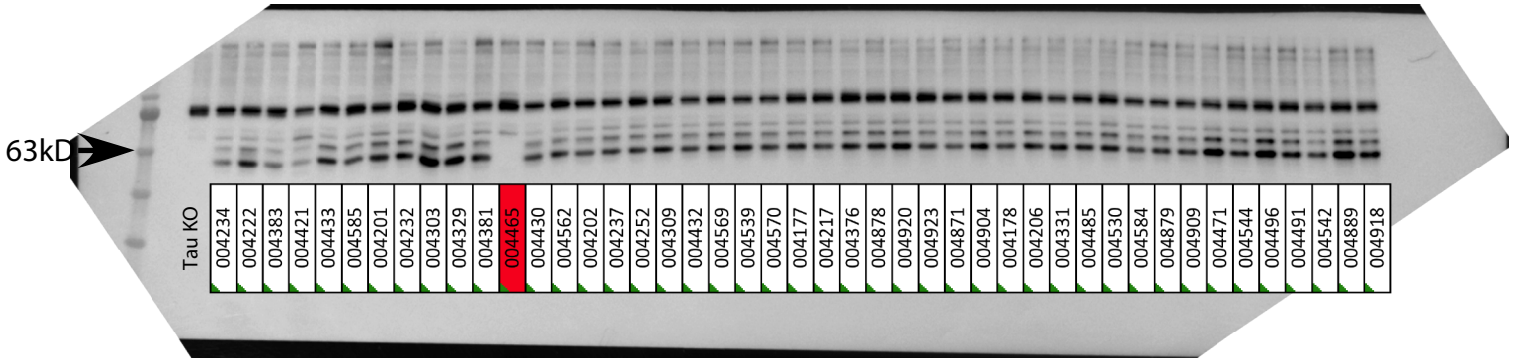
1. CP13



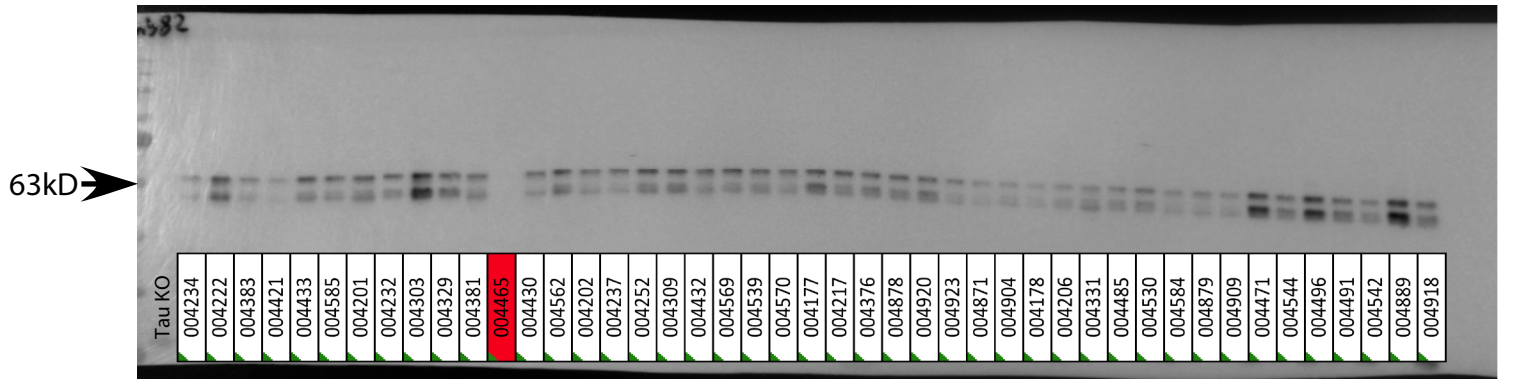
2. AT8



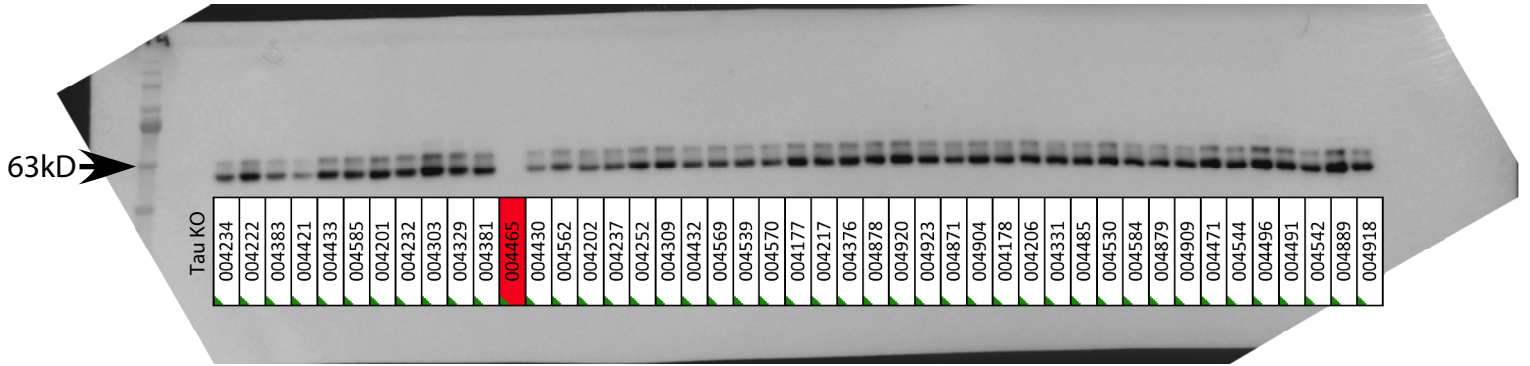
3. pT205



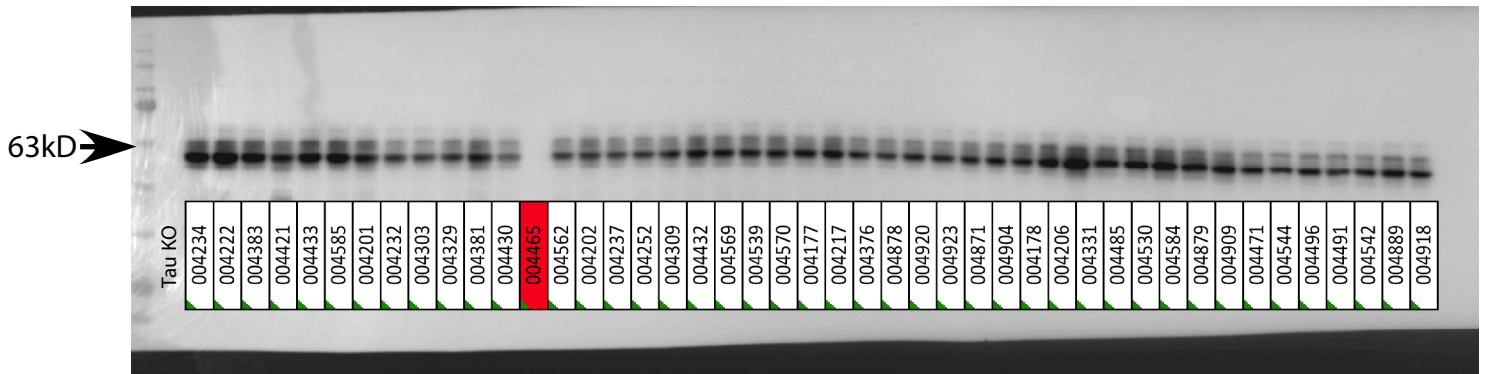
4. AT180



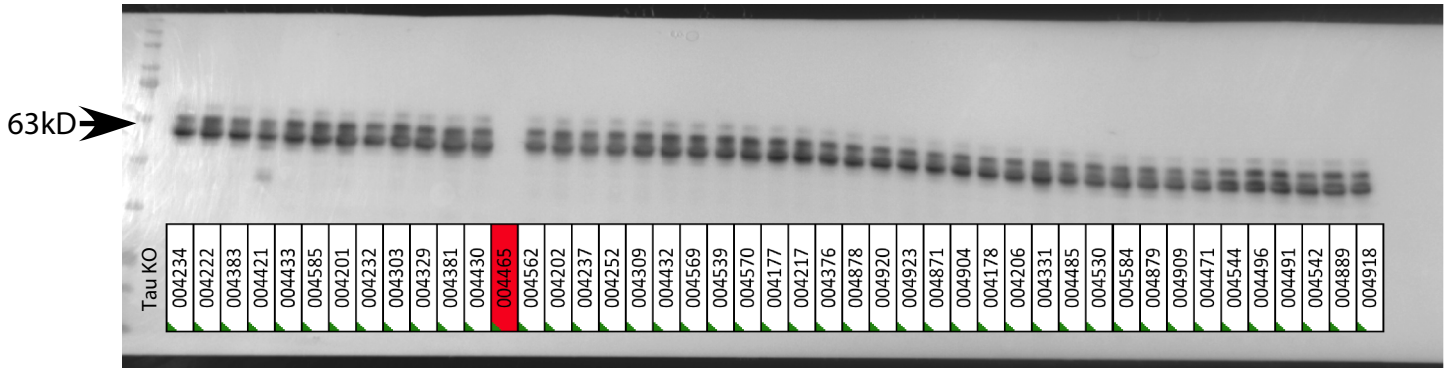
5. PHF1



6. Tau1



7. Total Tau



8. β -actin

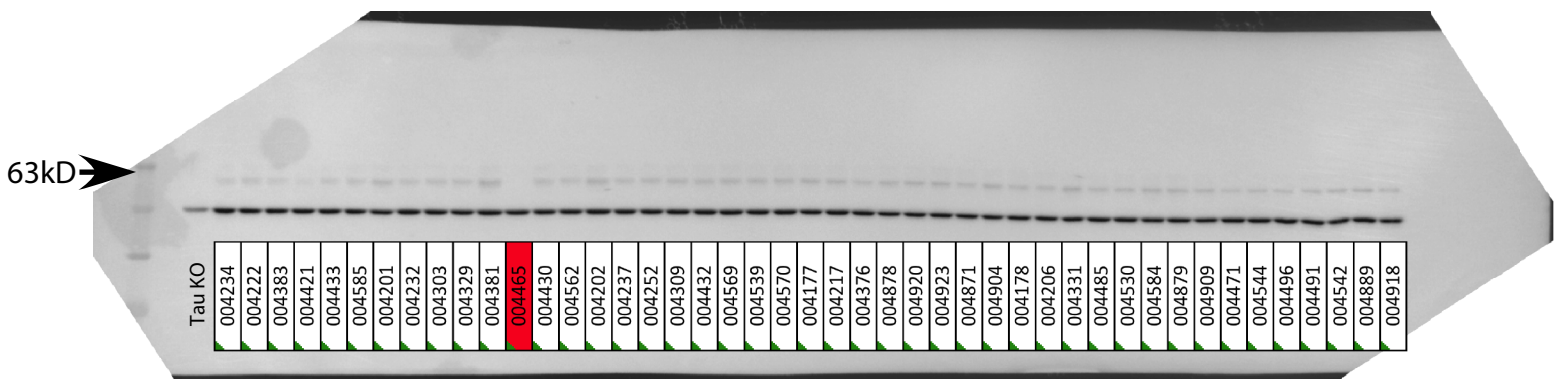
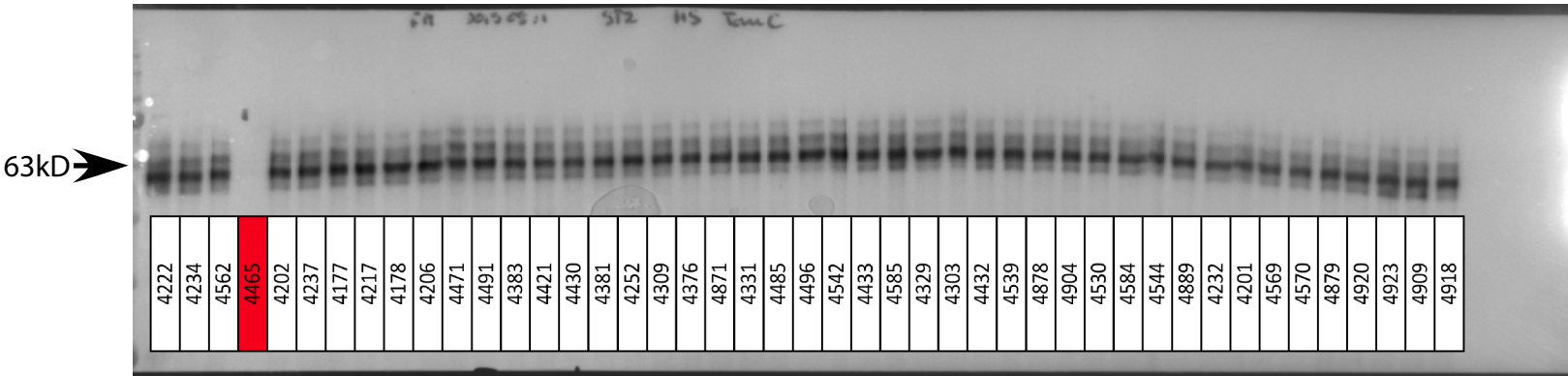


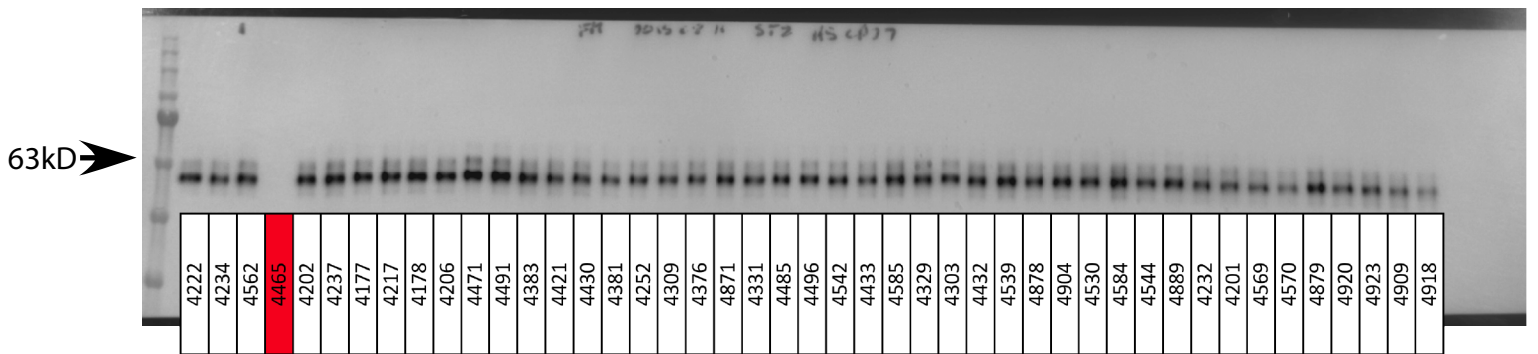
Figure 4

A. Soluble Tau

1. Total Tau

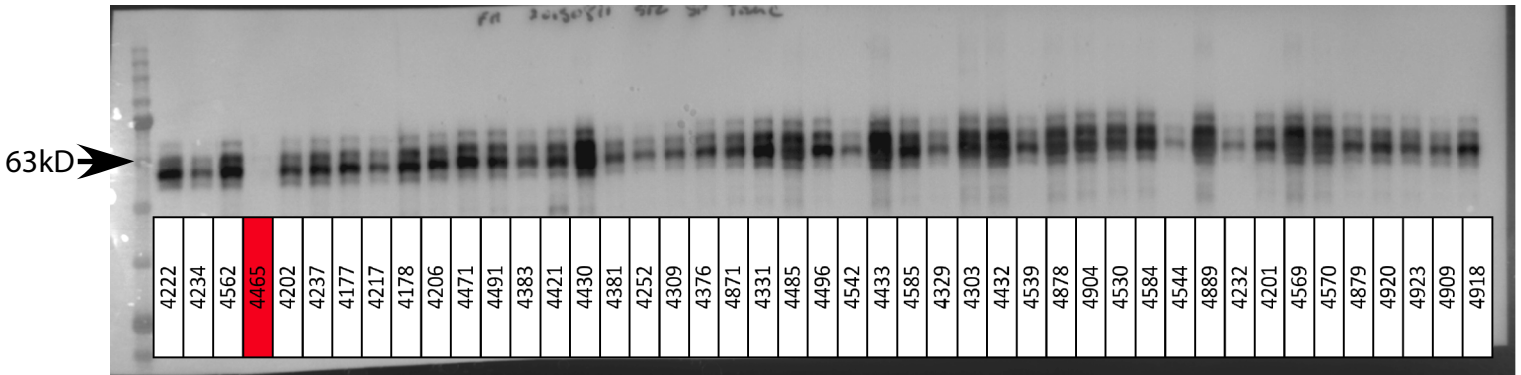


2. Human Tau



B. Insoluble Tau

3. Total Tau



4. Human Tau

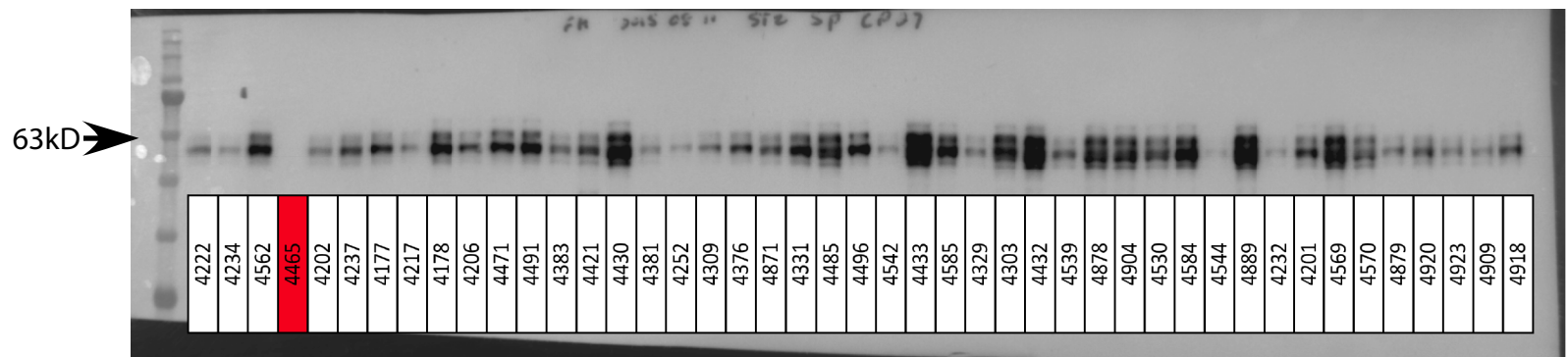
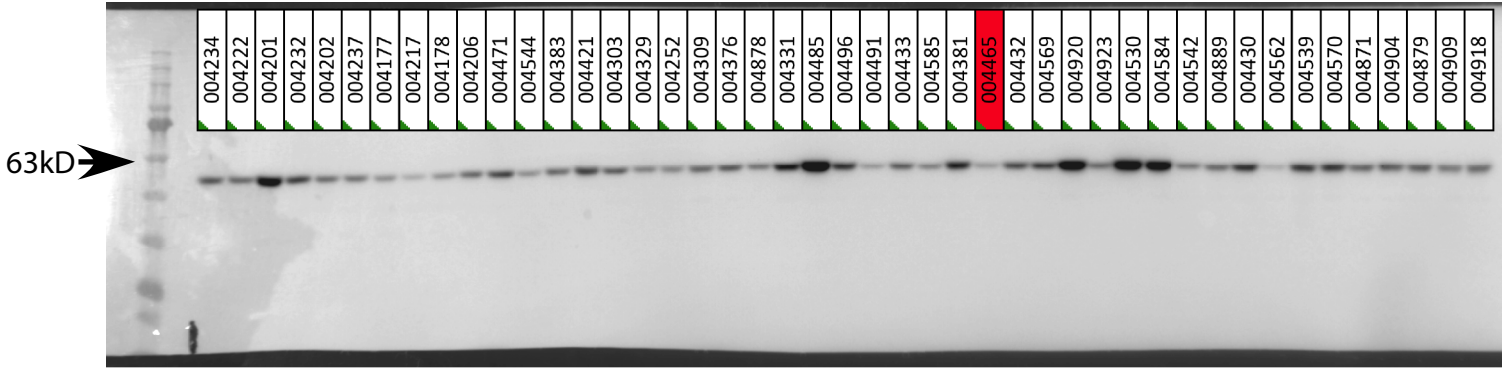
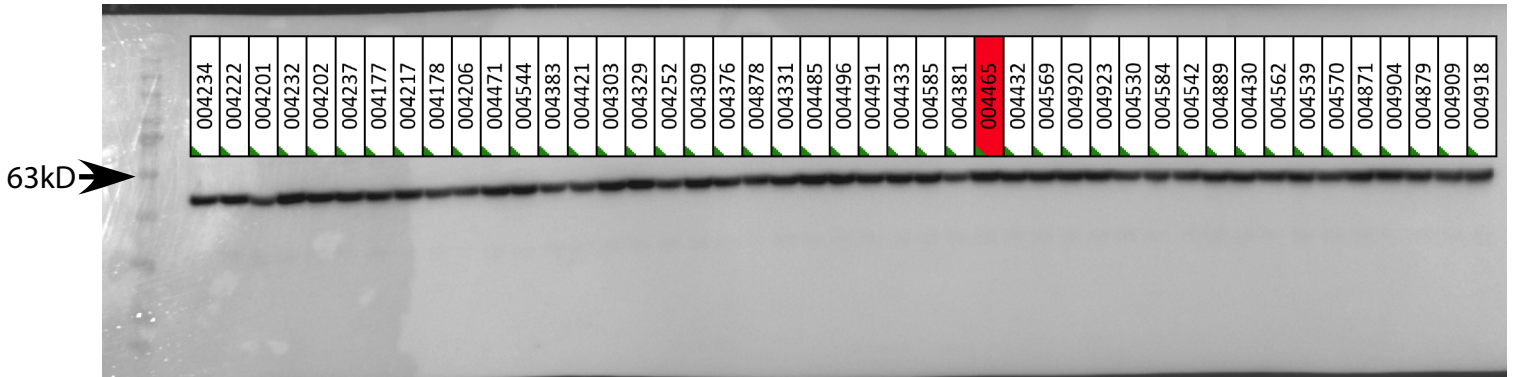


Figure 5

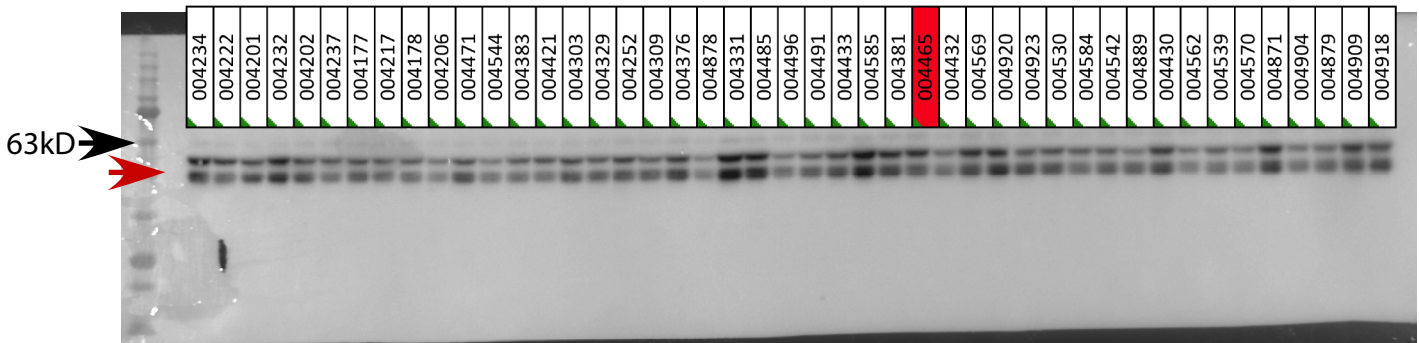
1. pCaMKII



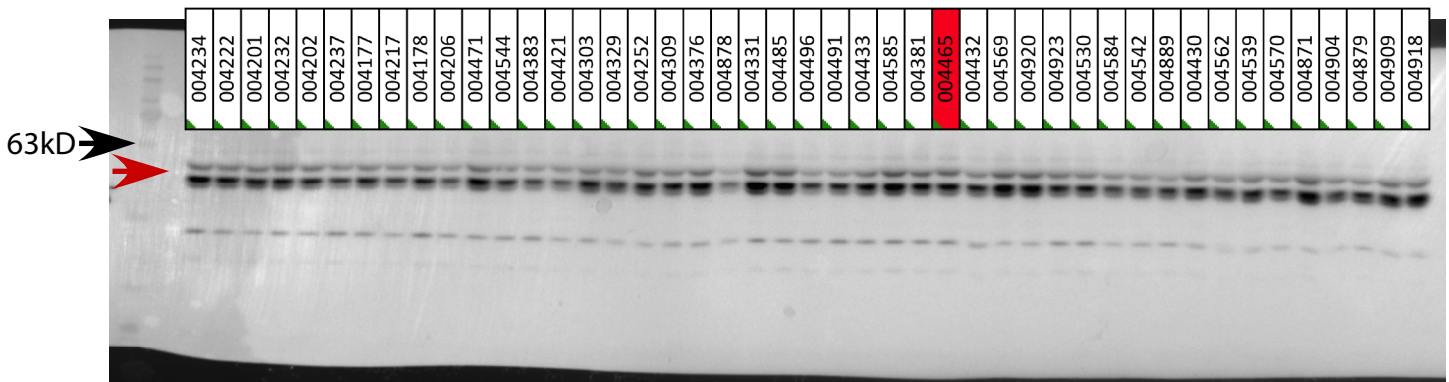
2. CaMKII



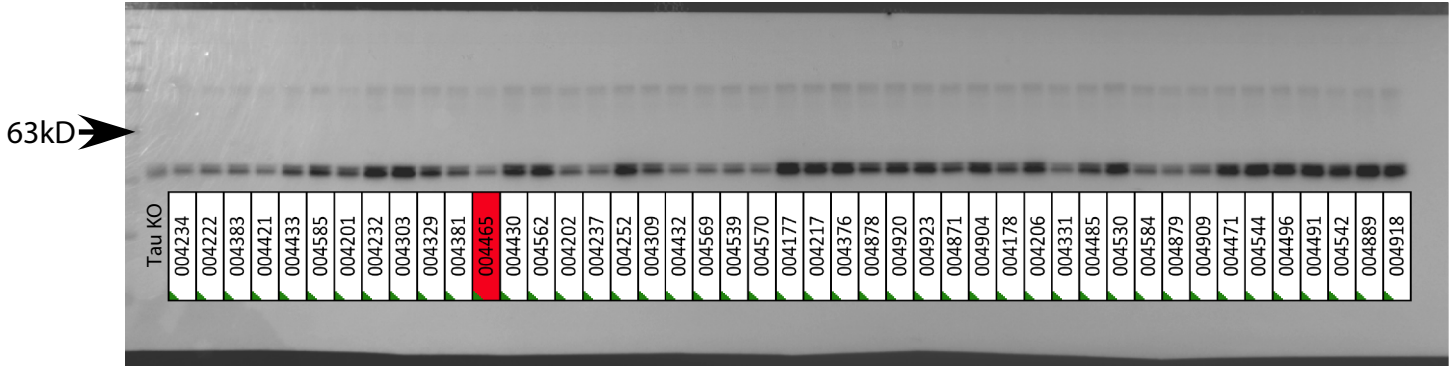
3. pJNK



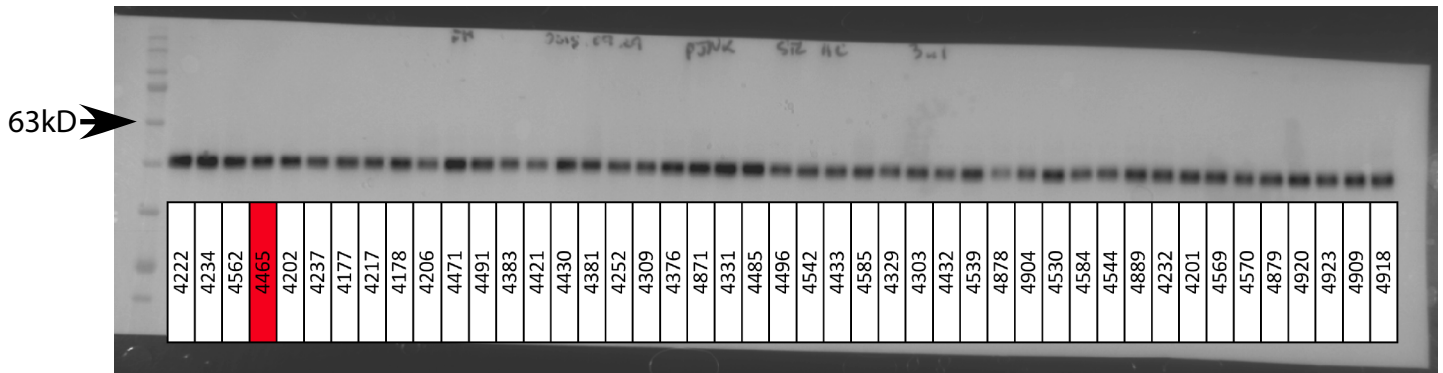
4. JNK



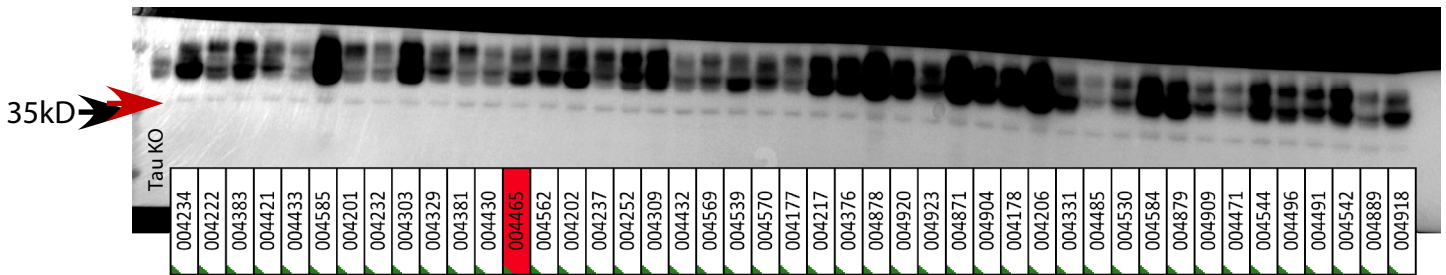
5. pS9-GSK3 β



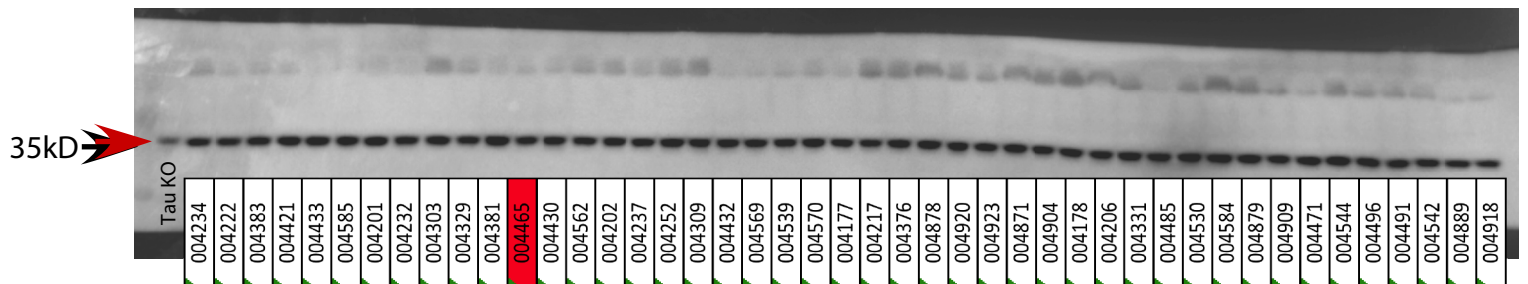
6. GSK3 β



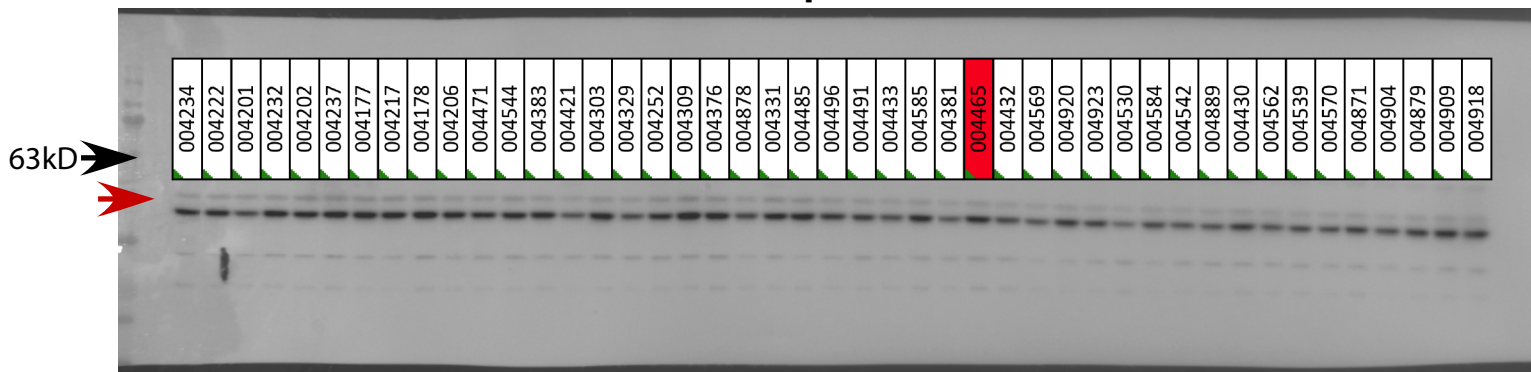
7. pP38



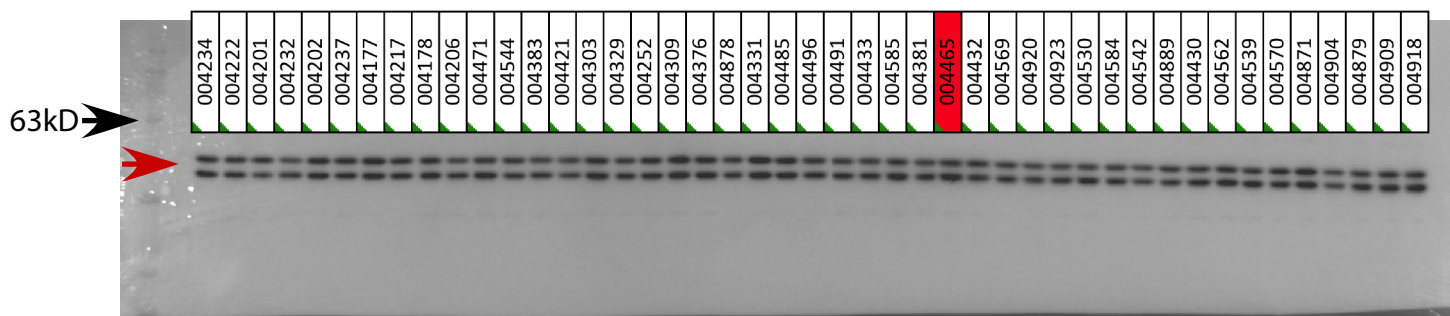
8. P38



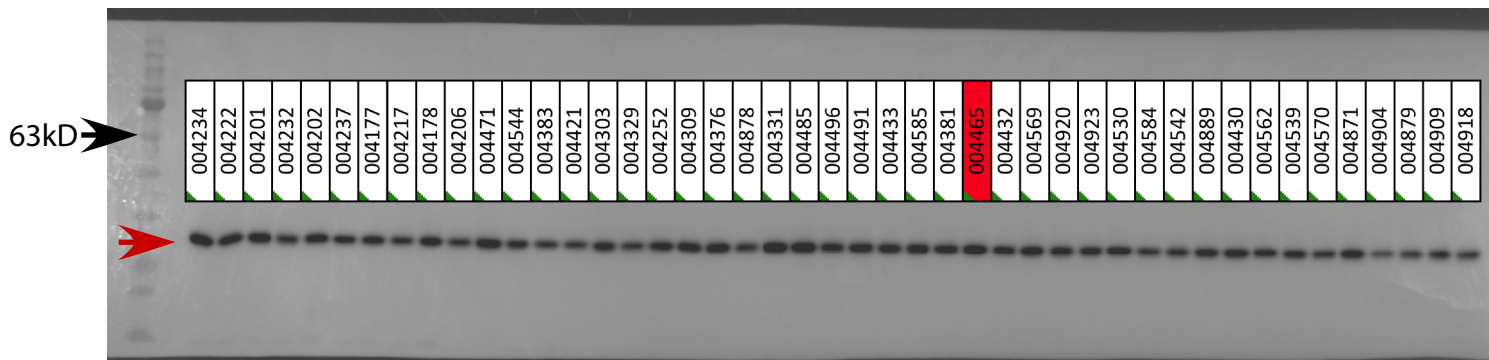
9. pERK



10. ERK



11. cdk5



12. p35

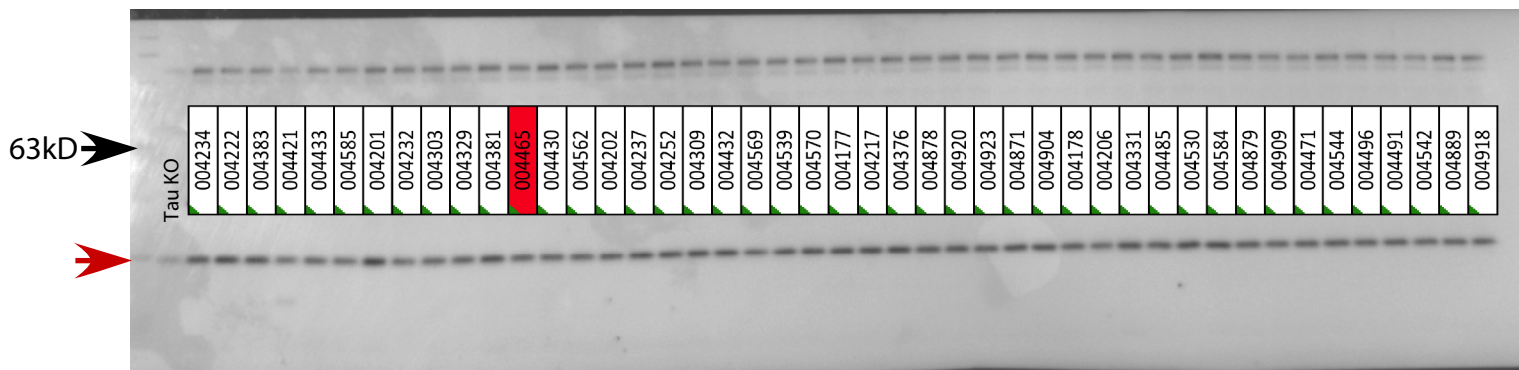
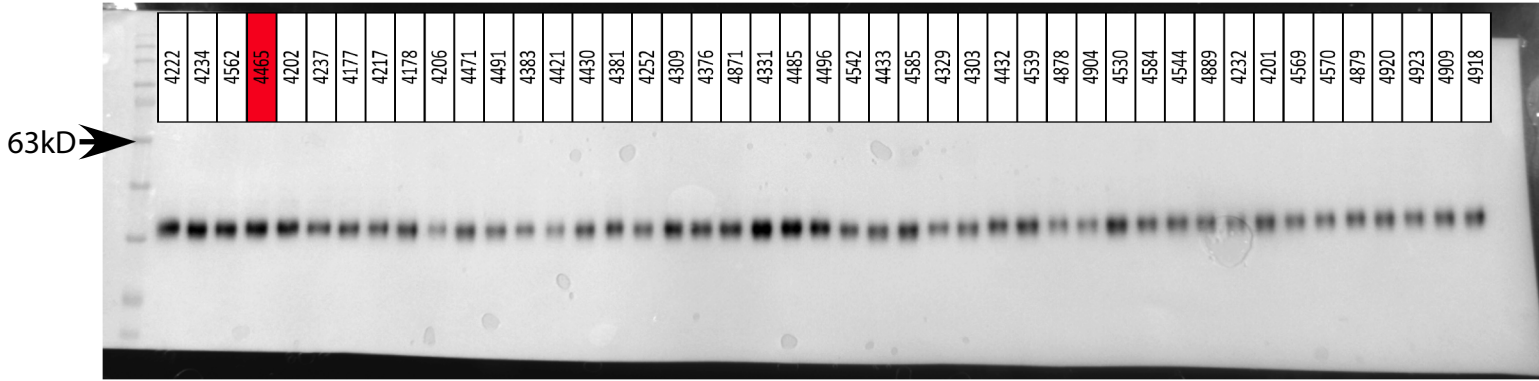
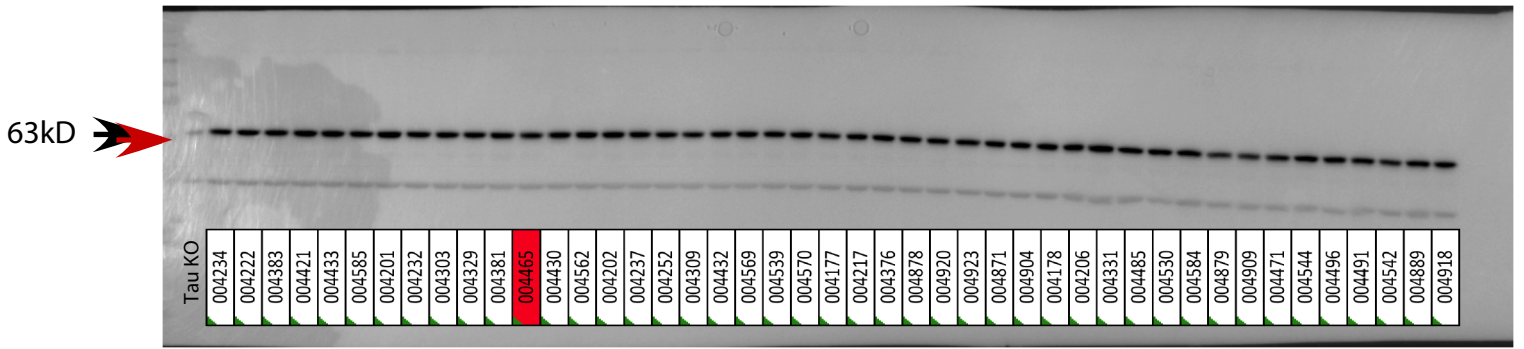


Figure 6

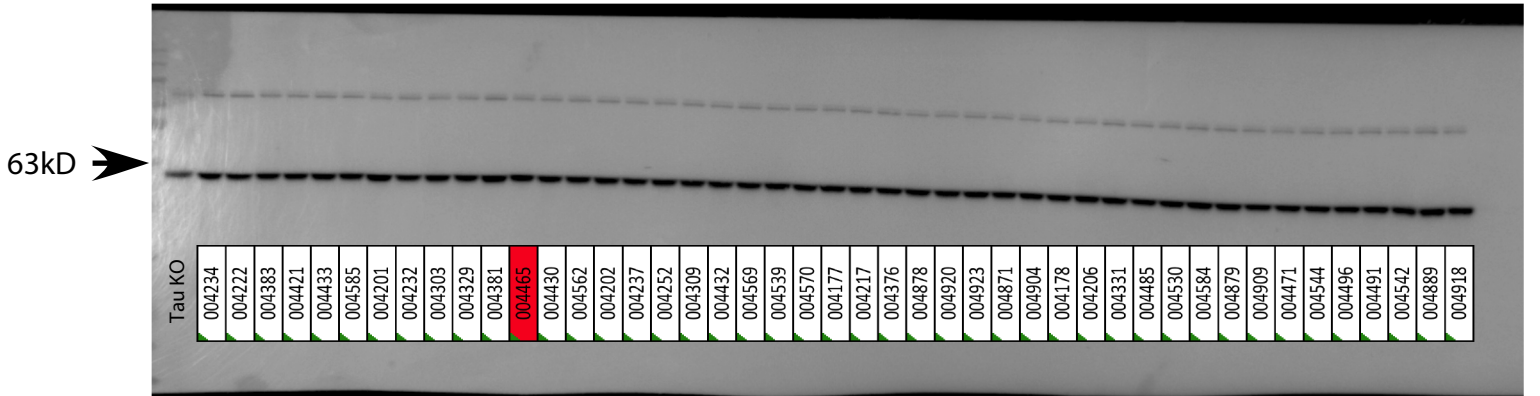
1. PP1



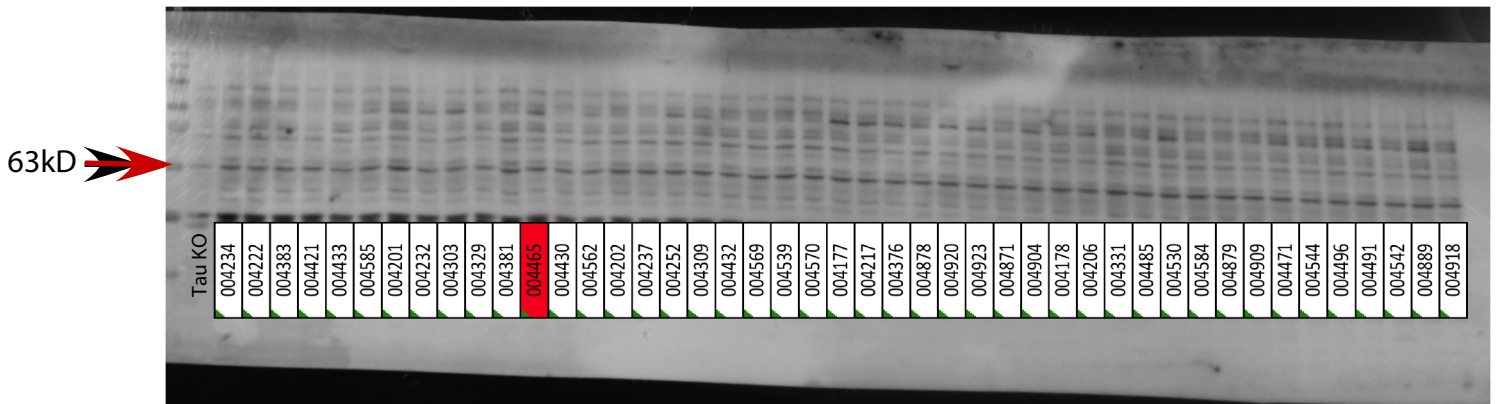
2. PP2A-A



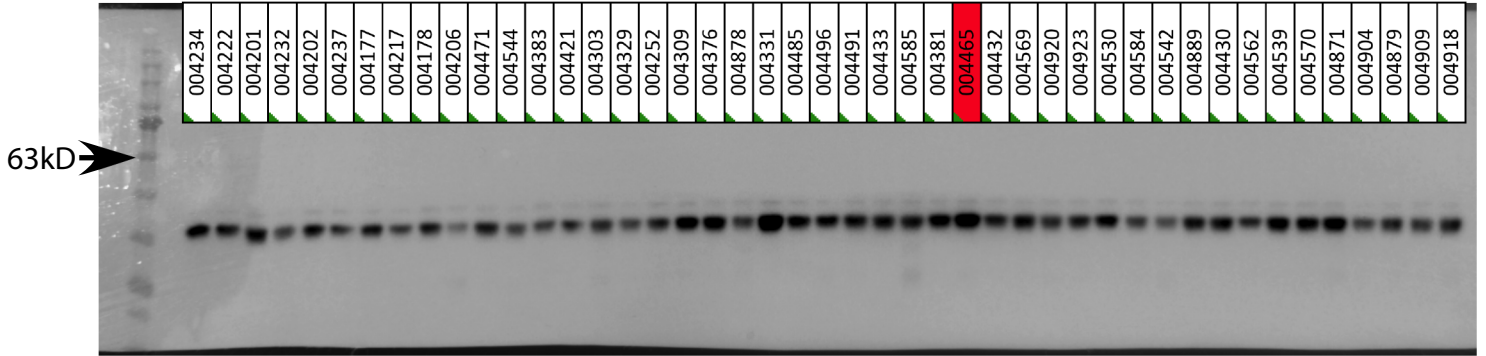
3. PP2A-B α



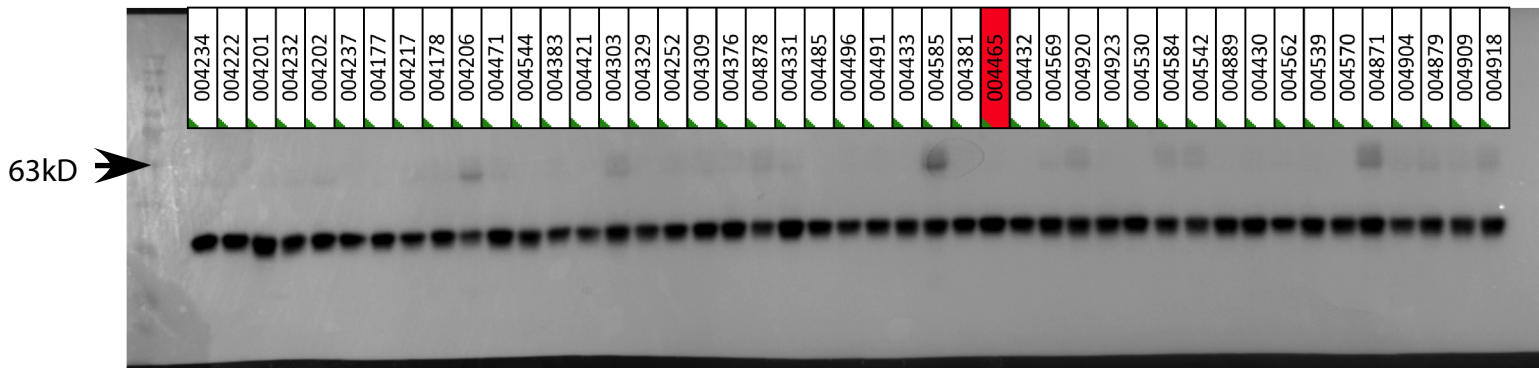
4. PP2A-B β



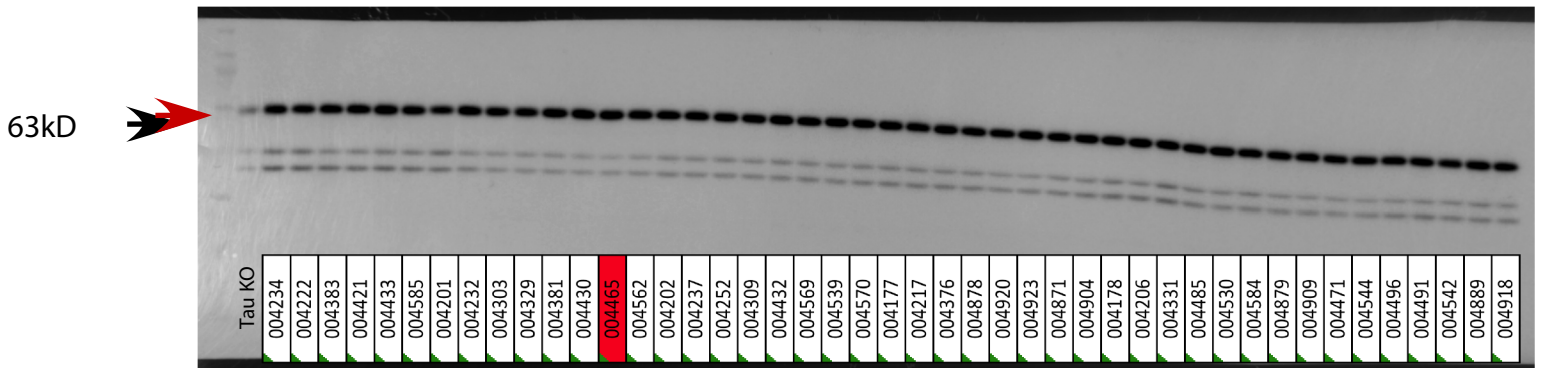
5. demPP2A-C



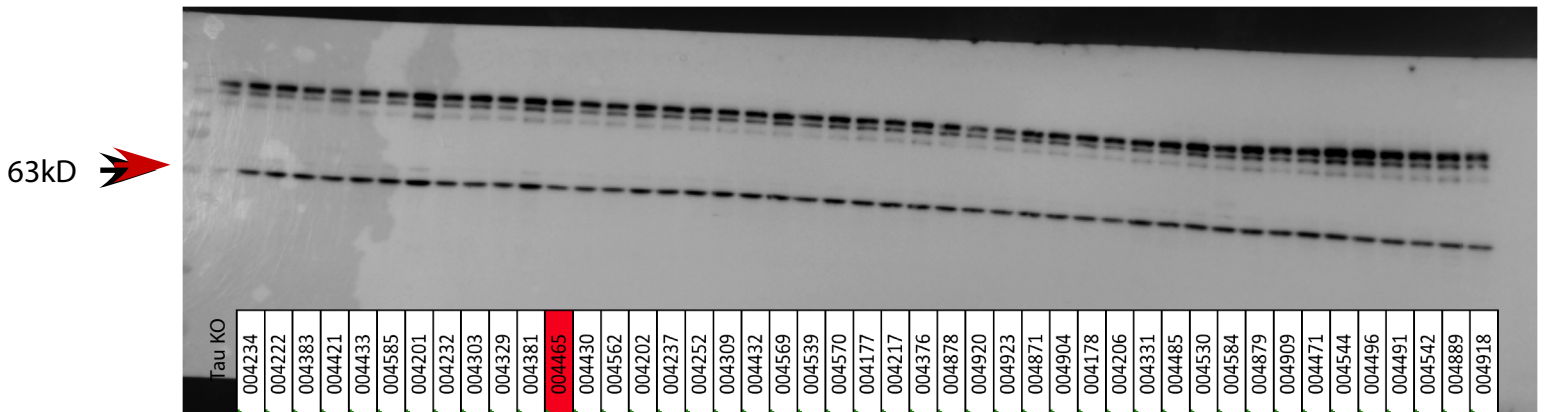
6. PP2A-C



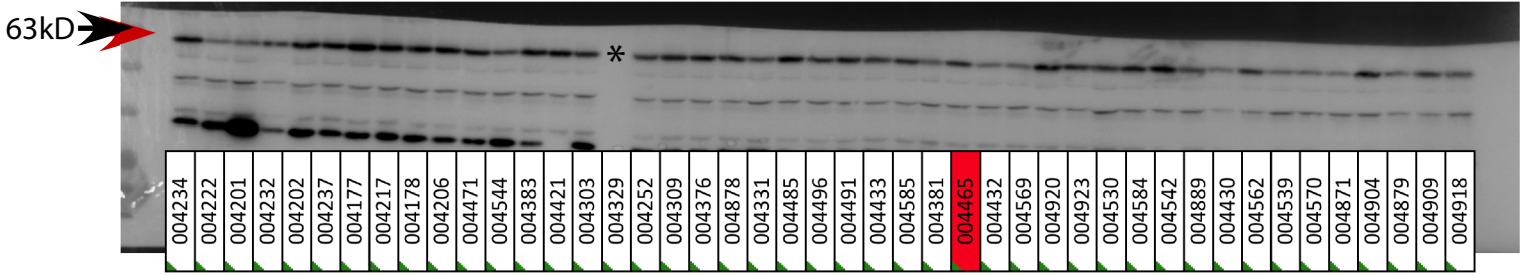
7. PP2B



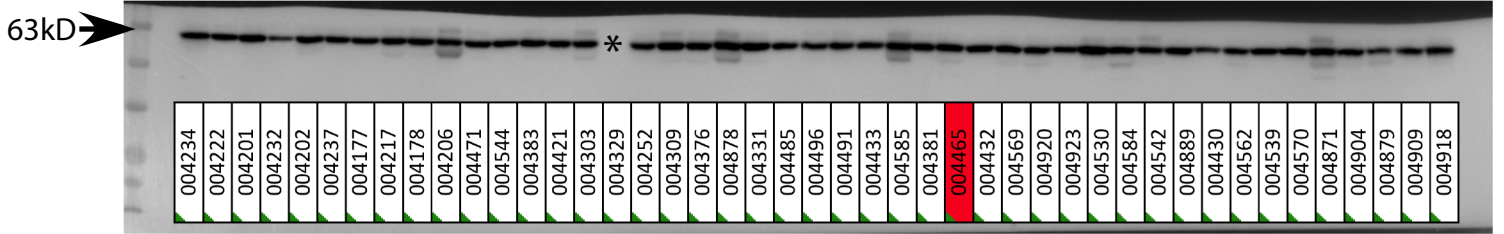
8. PP5



9. pPTEN



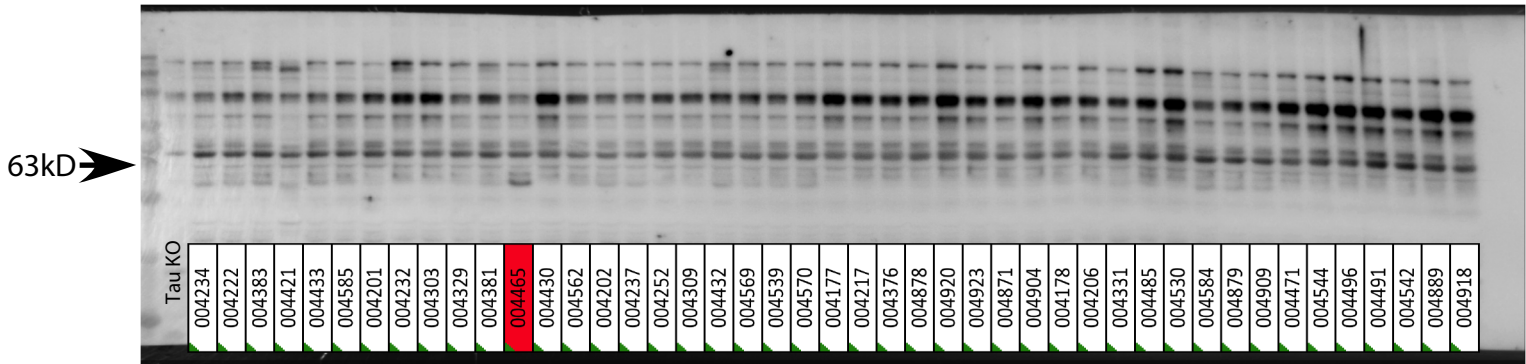
10. PTEN



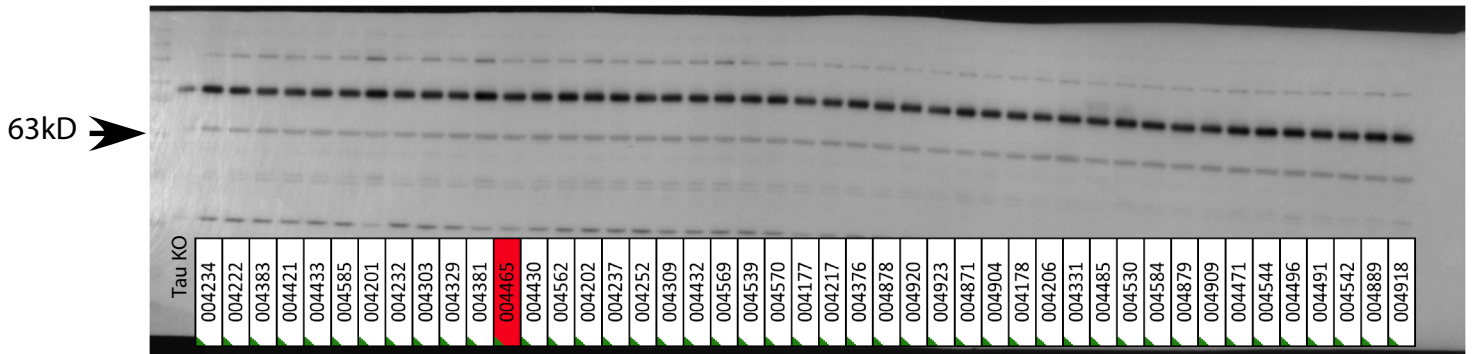
* No more sample

Figure 7

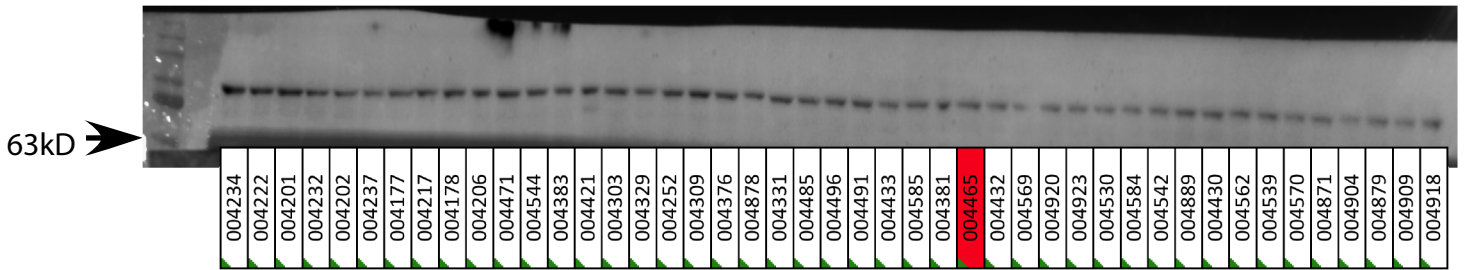
1. pIR



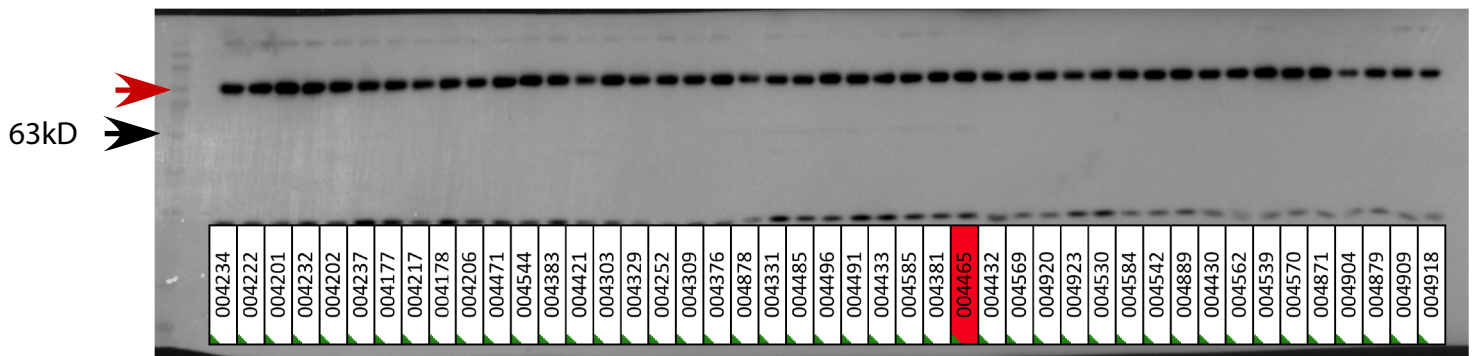
2. IR



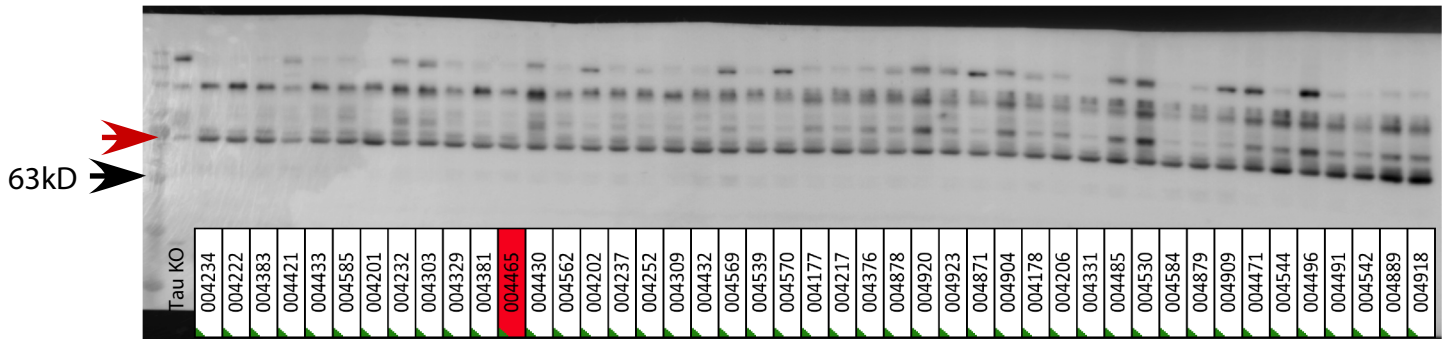
3. pIGF-1 R



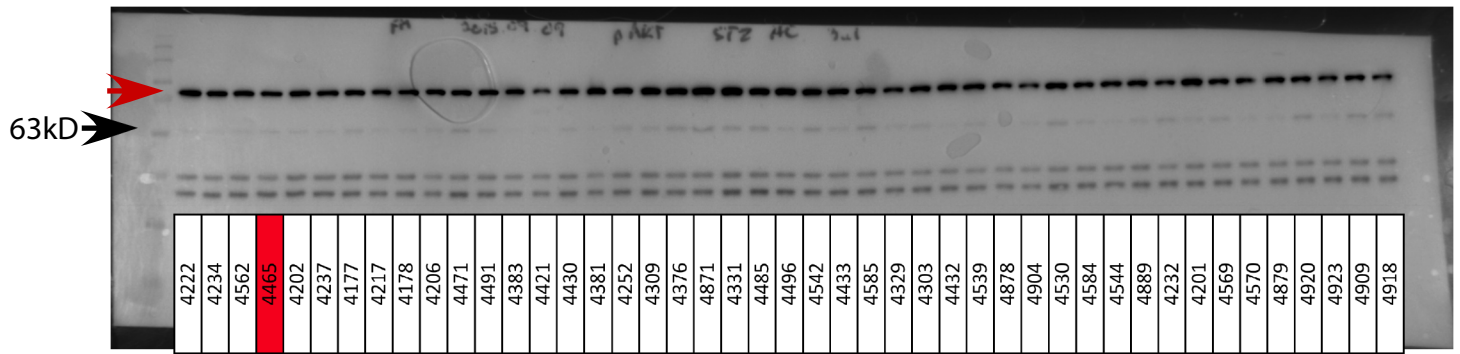
4. IGF-1 R



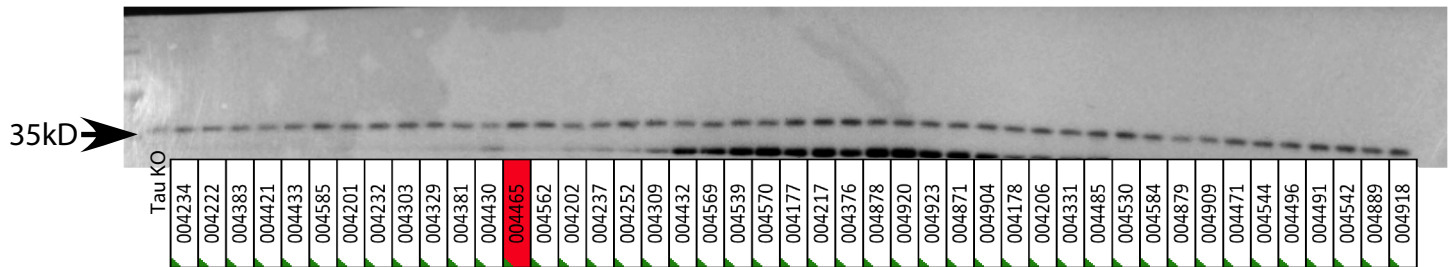
5. pPI3K



6. PI3K



7. pAKT



8. AKT

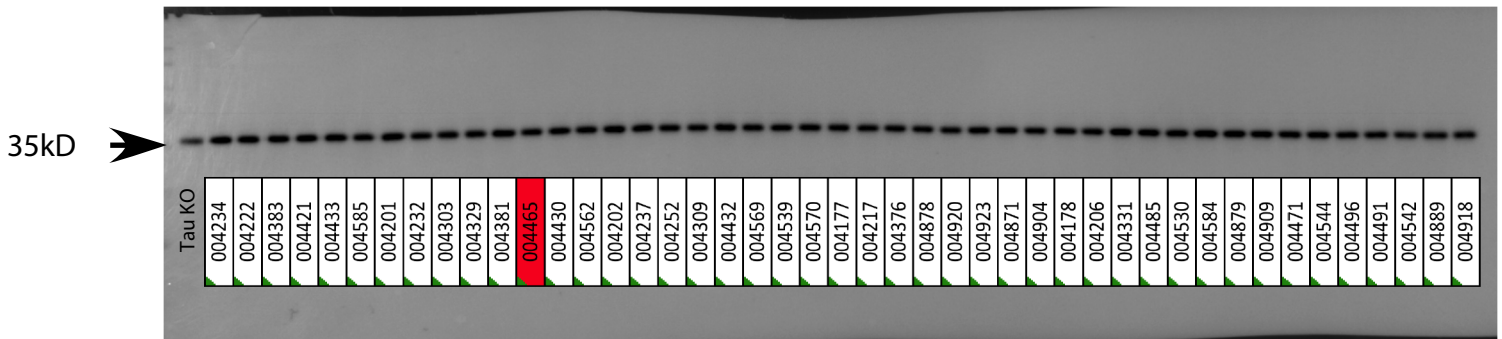
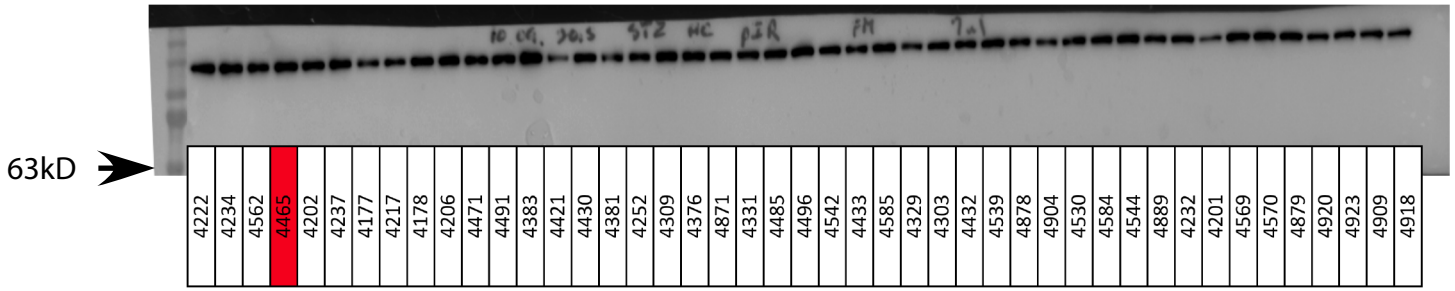


Figure 8

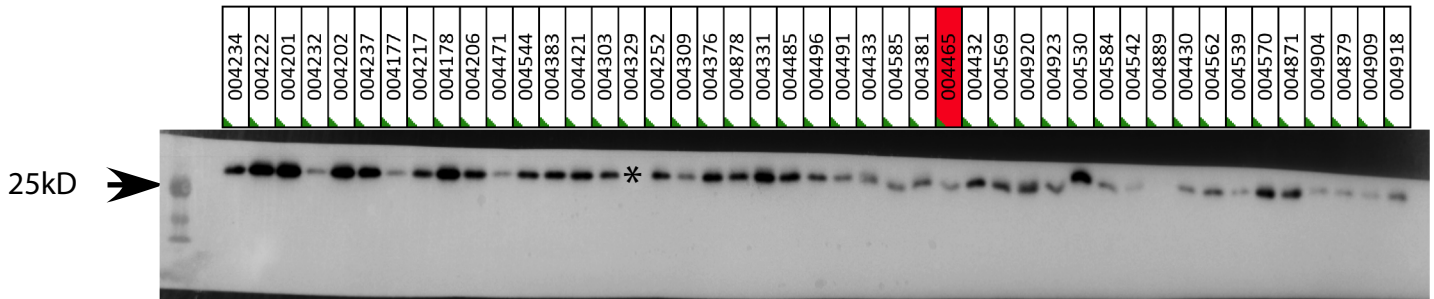
1. Drebrin



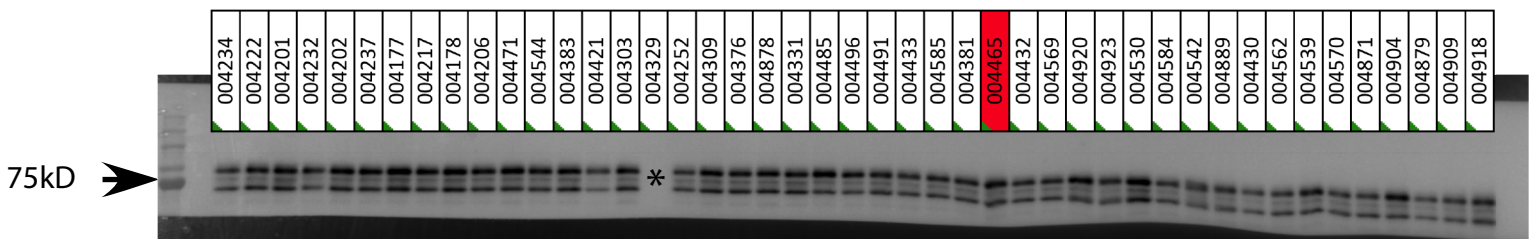
2. Synaptophysin



3. SNAP25



4. PSD95



* No more sample