

## Supplementary Data

### Figure S1. snoRNA constructs

**A)** Schematic representation of the galactose-inducible snoRNA cassette. The positions of the GAL promoter (GALp), ADH terminator sequence (ADHt) and exons 1 and 2 of the actin gene (E1 and E2) are shown. The positions of the NheI and MluI restriction sites, used in the cloning of the various C'/D' fragments, are indicated. **B)** Sequence of the artificial snoRNA cassette showing boxes (indicated above) and restriction sites (indicated below). **C)** Sequence of the different C'/D' motifs from various *S. cerevisiae* snoRNAs that were cloned into the snoRNA cassette. Included is the U18mutX sequence, in which the accessory guide was mutated to base-pair adjacent to the new target region in the 18S rRNA, used in Figure 2. The boxes and accessory guide sequences are indicated. **D)** Sequence of the C'/D' motif from the *L. elongisporous* snR48.

### Figure S2. Northern blot analysis of snoRNA levels

RNA was extracted from cells expressing either artificial snoRNA constructs (A), B) C) and D)) or mutant and wild-type snR13 snoRNAs (E), and analysed by Northern hybridisation using probes specific to the snoRNAs of interest (artificial snoRNA, snR13) or loading controls (5S, snR5, snR87). The probe used is indicated on the right and the transformed snoRNA construct indicated above each lane. In panels D and E, methylene blue stained 5S rRNA was used as a loading control.

Figure S1

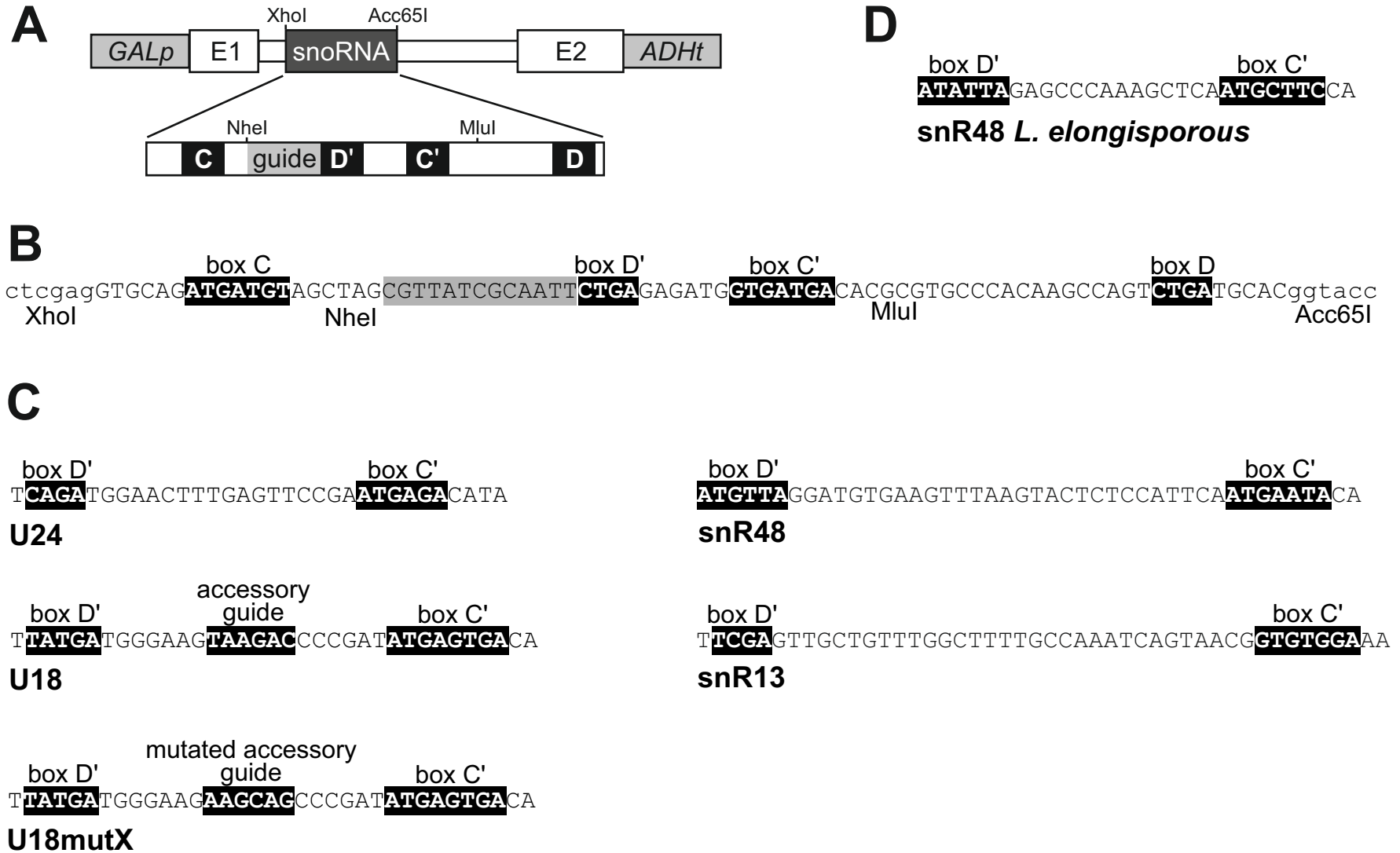
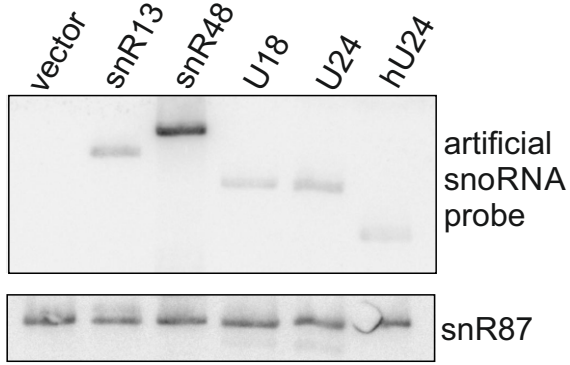
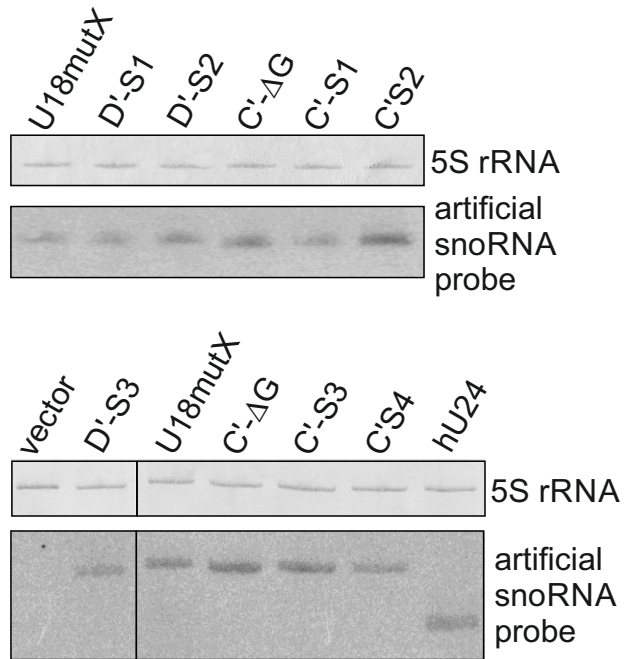


Figure S2

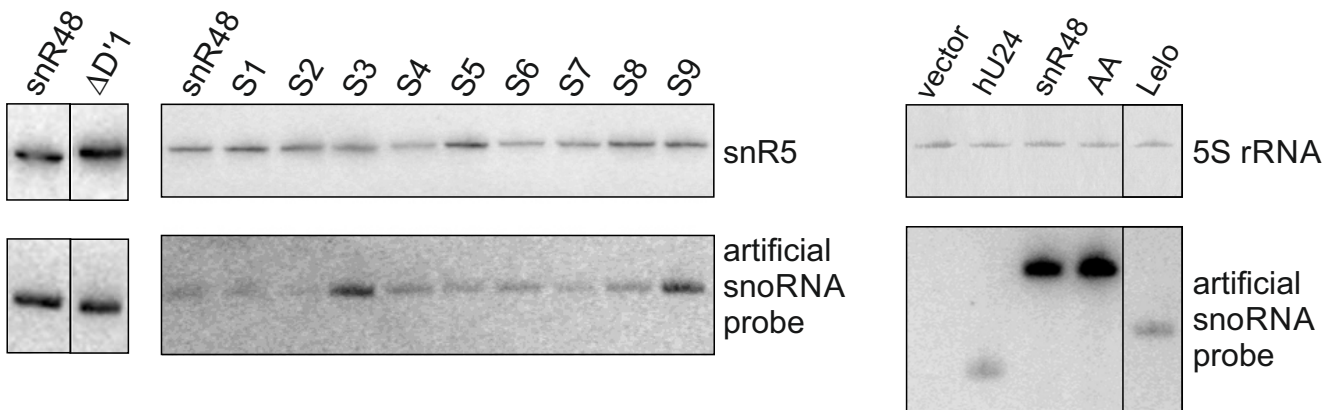
**A**



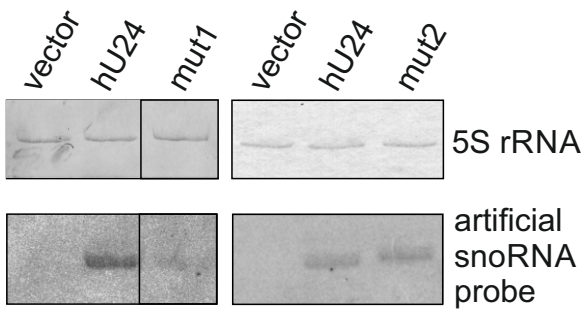
**B**



**C**



**D**



**E**

