

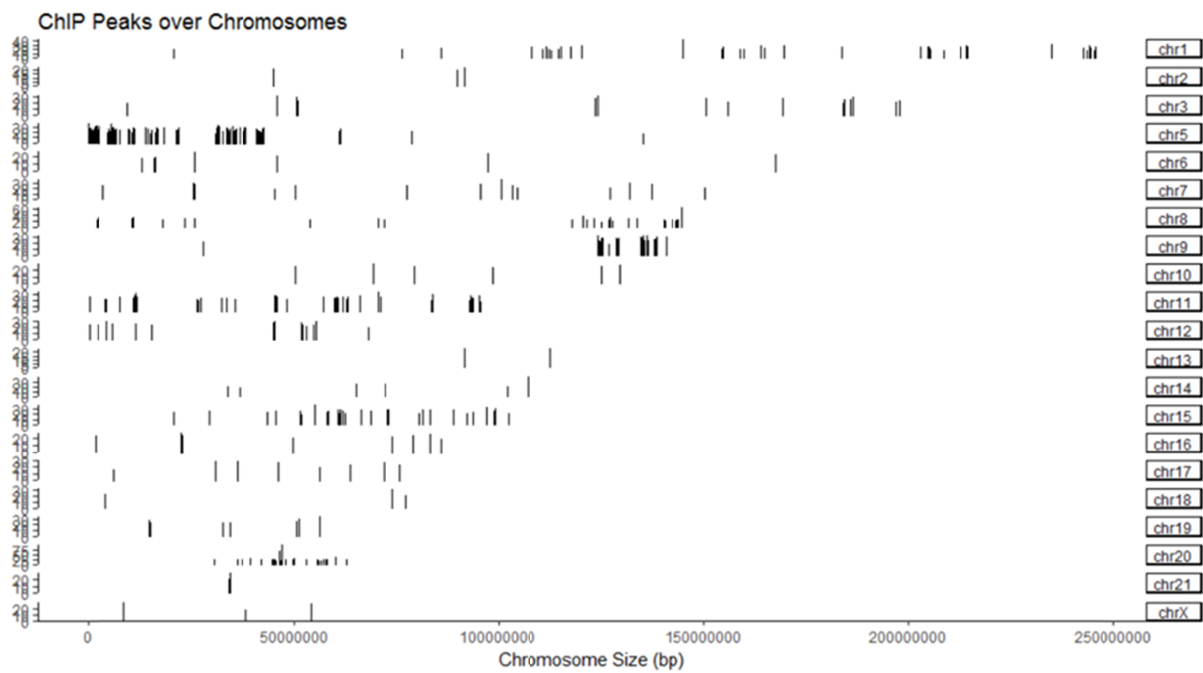
SUPPLEMENTARY INFORMATION

A ChIP-Seq Data Analysis Pipeline Based on Bioconductor Packages

Seung-Jin Park^{1,2}, Jong-Hwan Kim^{1,2}, Byung-Ha Yoon^{1,2}, Seon-Young Kim^{1,2*}

¹Personalized Genomic Medicine Research Center, Korea Research Institute of Bioscience and Biotechnology (KRIBB), Daejeon 34141, Korea,

²Department of Functional Genomics, University of Science and Technology (UST), Daejeon 34113, Korea



Supplementary Fig. 7. Coverage plot. Coverage plot visualizes the broad peak locations over the whole genome.