

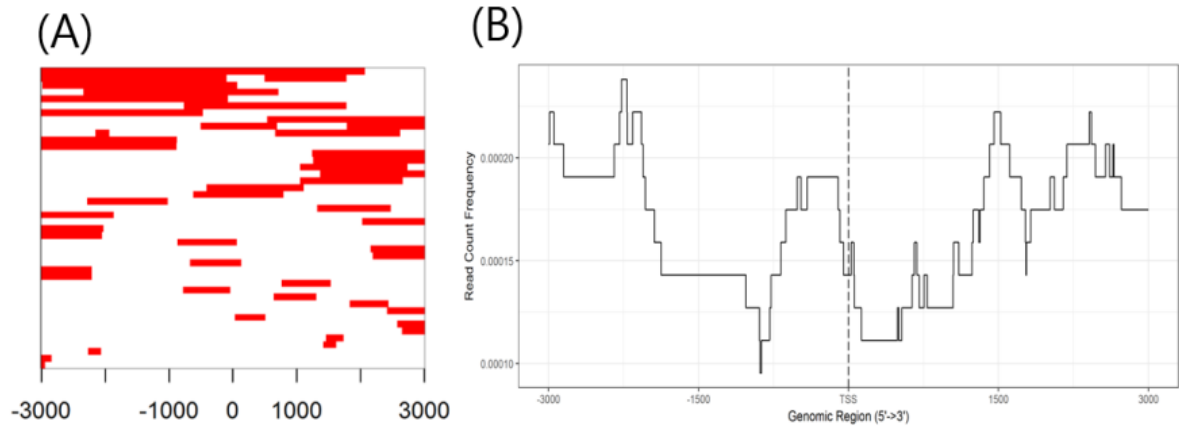
SUPPLEMENTARY INFORMATION

A ChIP-Seq Data Analysis Pipeline Based on Bioconductor Packages

Seung-Jin Park^{1,2}, Jong-Hwan Kim^{1,2}, Byung-Ha Yoon^{1,2}, Seon-Young Kim^{1,2*}

¹Personalized Genomic Medicine Research Center, Korea Research Institute of Bioscience and Biotechnology (KRIBB), Daejeon 34141, Korea,

²Department of Functional Genomics, University of Science and Technology (UST), Daejeon 34113, Korea



Supplementary Fig. 8. (A) Heatmap of chromatin immunoprecipitation (ChIP) binding to transcription start site (TSS) regions. (B) Average profile of ChIP peaks binding to TSS regions. It shows the read count frequency of the broad peak sample in the range from -3000 bp to +3000 bp.