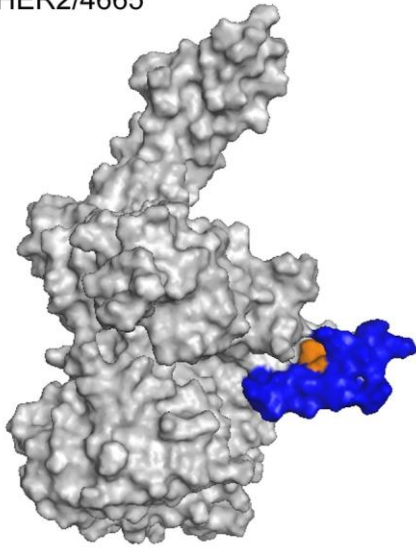
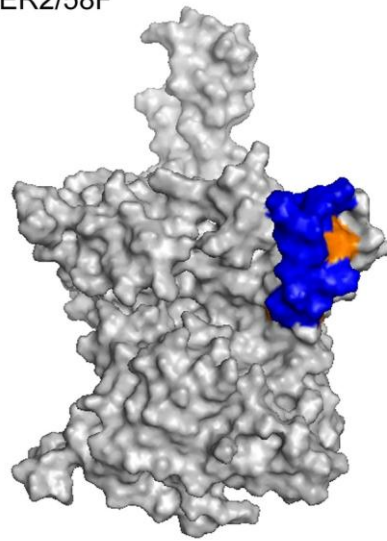


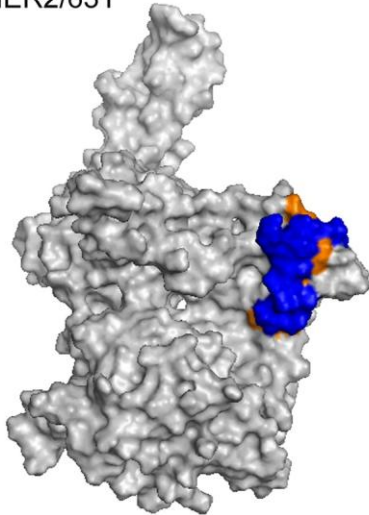
A HER2/4665



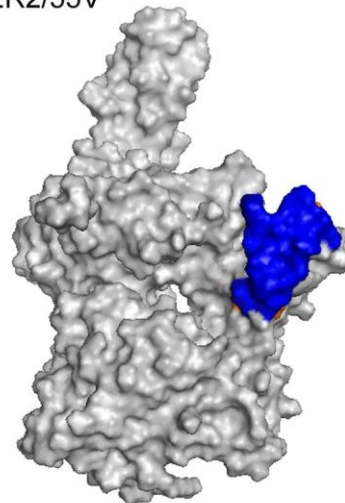
B HER2/58F



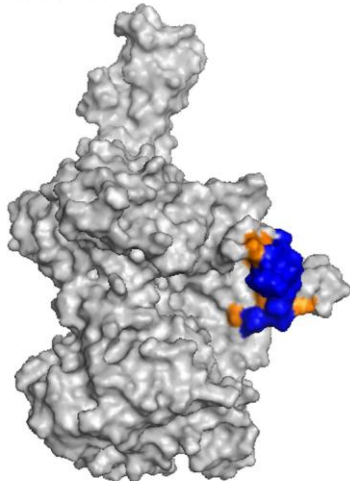
C HER2/63Y



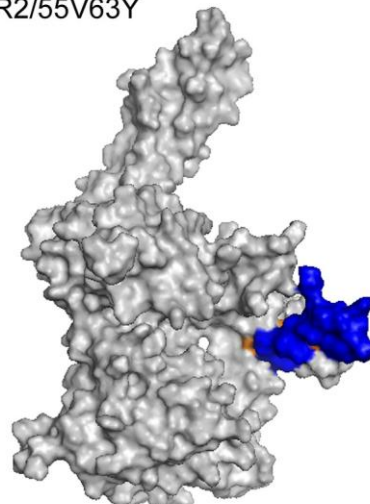
D HER2/55V



E HER2/58F63Y



F HER2/55V63Y



S6 Fig. Comparison of the interactions of HER2/peptides. HER2/4665 (A), HER2/58F (B), HER2/63Y (C), HER2/55V (D), HER2/58F63Y (E), and HER2/55V63Y (F). Gray cartoons are the HER2 protein, and blue cartoons are the

mutant peptides. Orange spots show the main contributing residues of each peptide interacting with HER2 protein.