



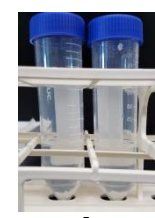
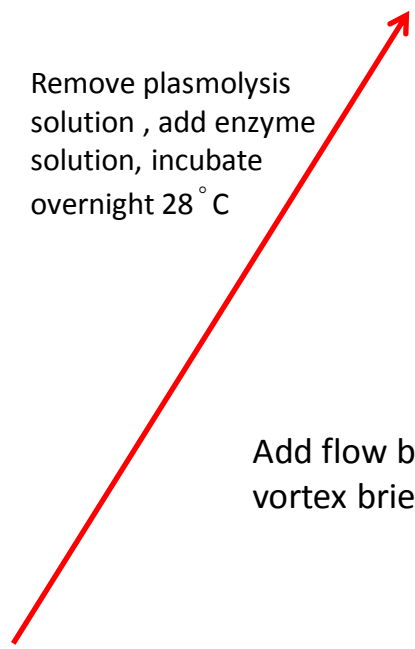
Surface sterilize & core tuber



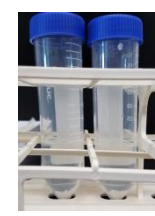
Slice core and place in plasmolysis solution, incubate overnight 4 °C



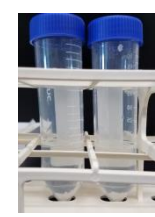
Remove plasmolysis solution, add enzyme solution, incubate overnight 28 °C



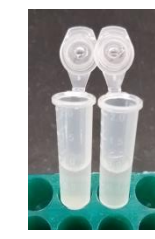
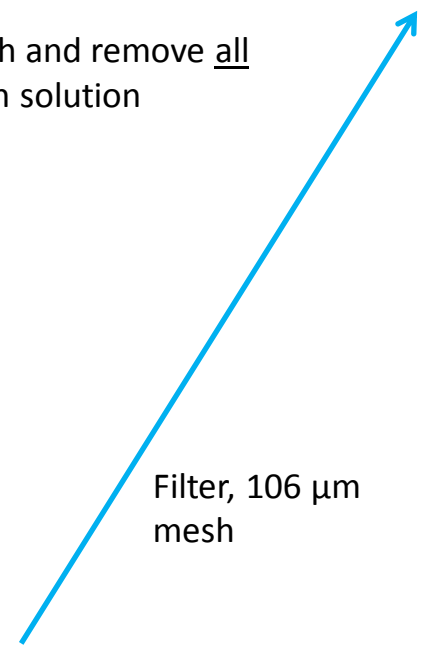
Wash and remove all wash solution



Add flow buffer, vortex briefly



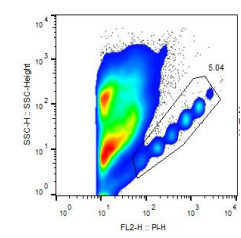
Filter, 106 µm mesh



Add RNase, Incubate



Add PI, Incubate



Flow Cytometry

- Room temp, Aseptic
- Room temp, Non-aseptic
- On ice, Non-aseptic