

**Figure S1**

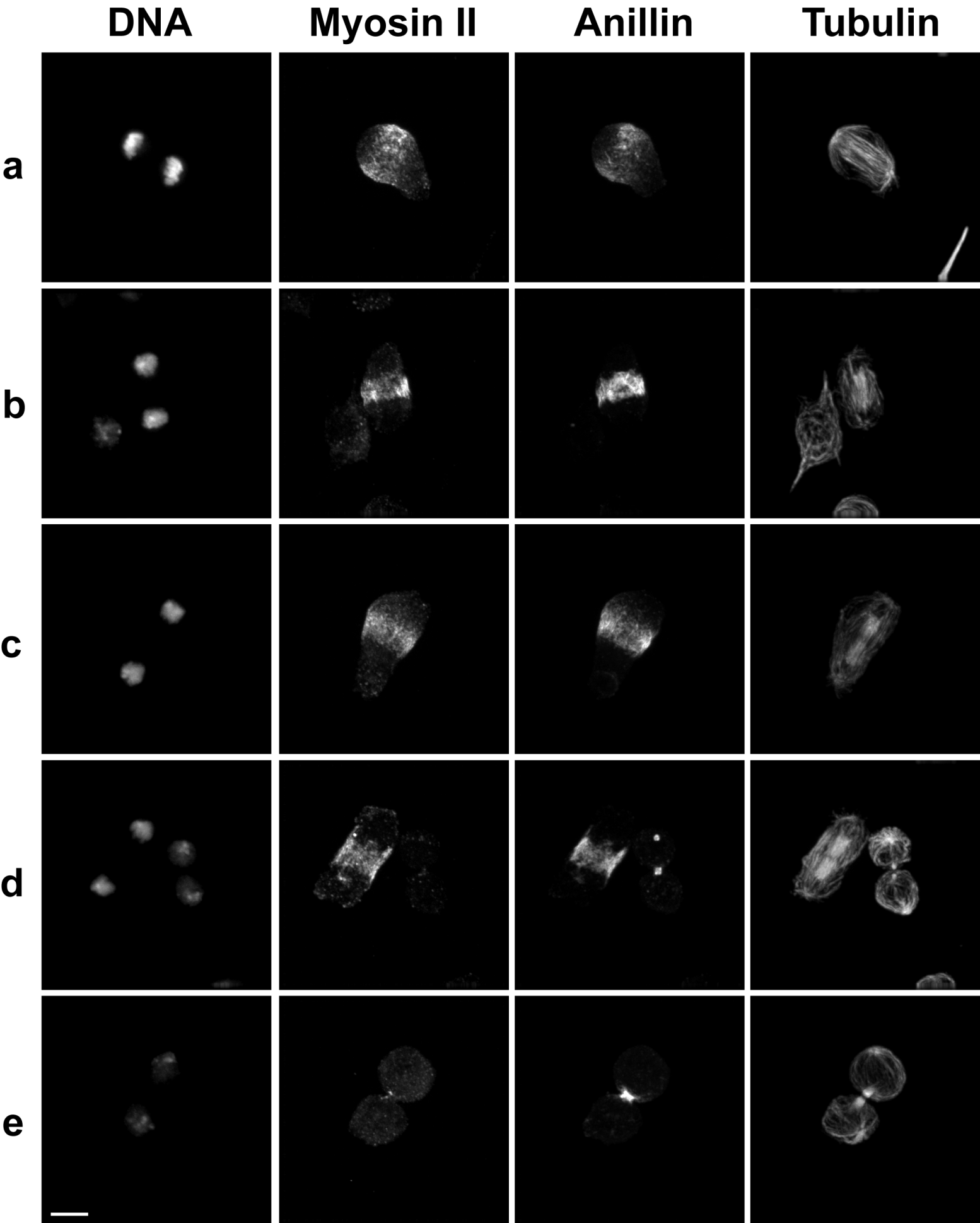


Figure S2

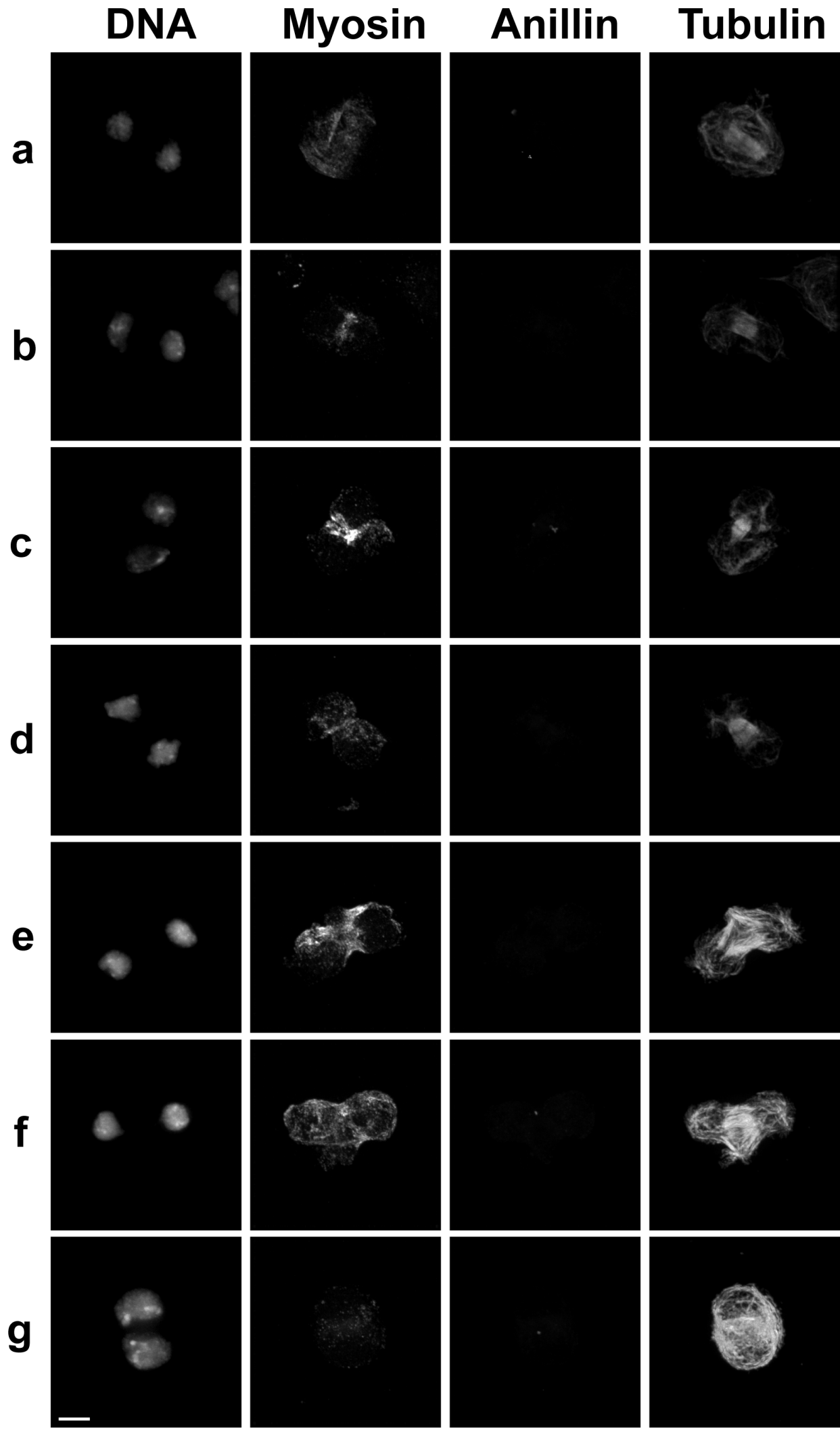


Figure S3

**Figure S1** – Myosin binding to Anillin and control GST beads. Coomassie staining of eluates from anillin or GST columns after phosphorylation as described in Figure 4.

**Figure S2** – *Drosophila* Kc167 cells fixed and stained for DNA, myosin II, anillin and tubulin during different stages of cytokinesis. Scale bar represents 5  $\mu\text{m}$ .

**Figure S3** – *Drosophila* Kc167 cells treated with dsRNA for anillin then fixed and stained for DNA, myosin II, anillin and tubulin during different stages of cytokinesis. Scale bar represents 5  $\mu\text{m}$ .