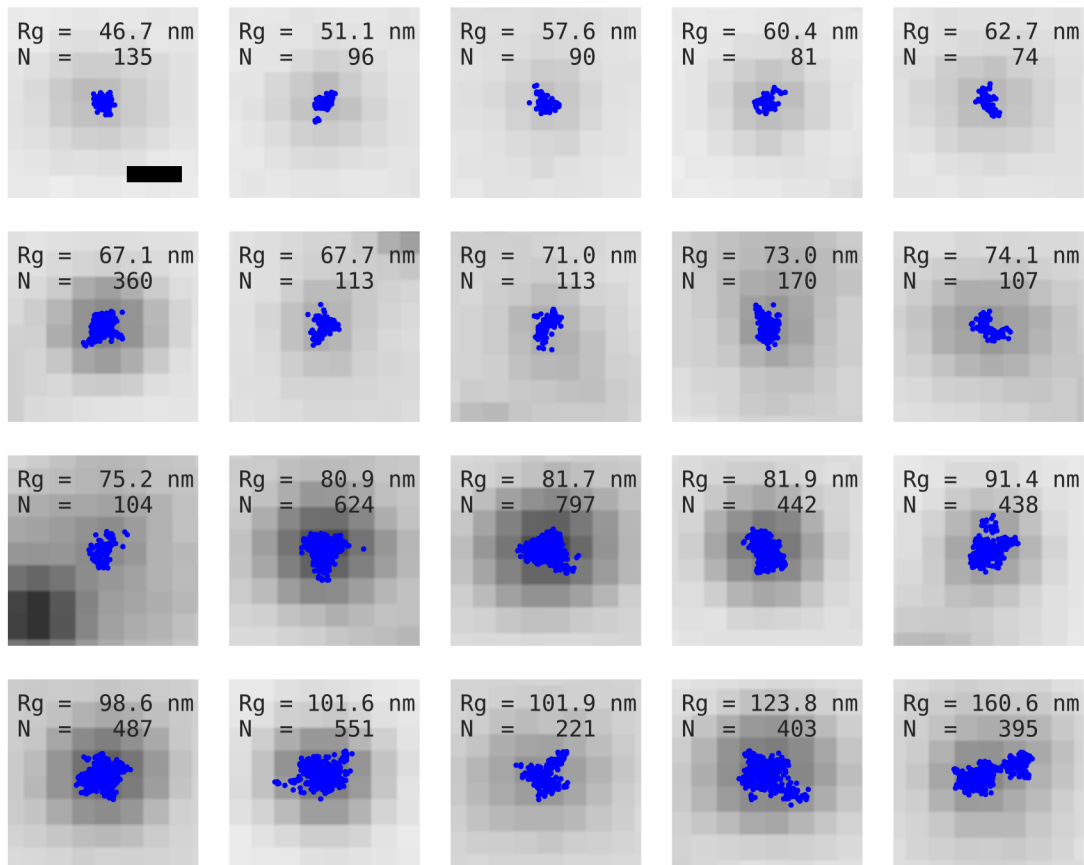
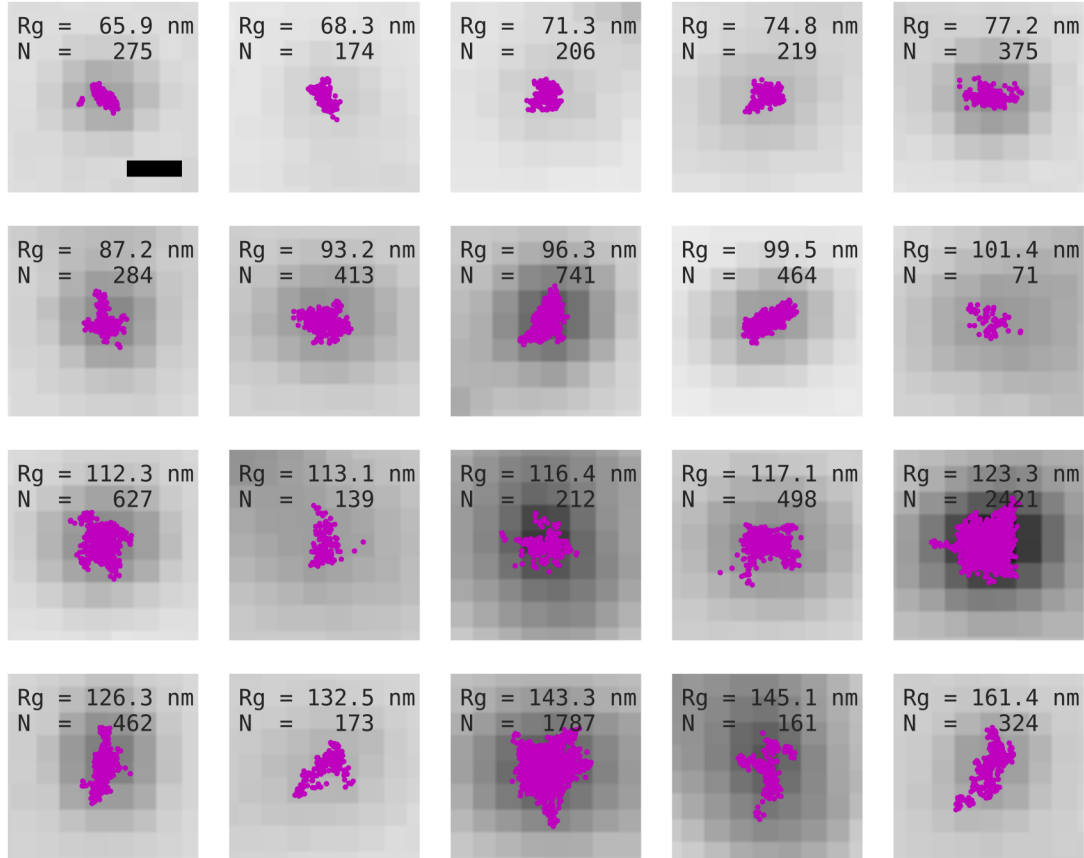


**A****B**

**Supplemental Figure S2:** Visual comparison of telomeres from populations with different mean lengths.

(A) Scatter plots of localizations overlaid on the corresponding widefield images of twenty telomeres drawn randomly from the HeLa S population of Figure 1. (B) Twenty clusters randomly drawn from the HeLa L population of Figure 1. Rg: radius of gyration. N: number of localizations. Scale bars: 250 nm.