

COLLETT *et al.* Supplemental Figures S1, S2, S3 and Supplemental Tables S1 and S2

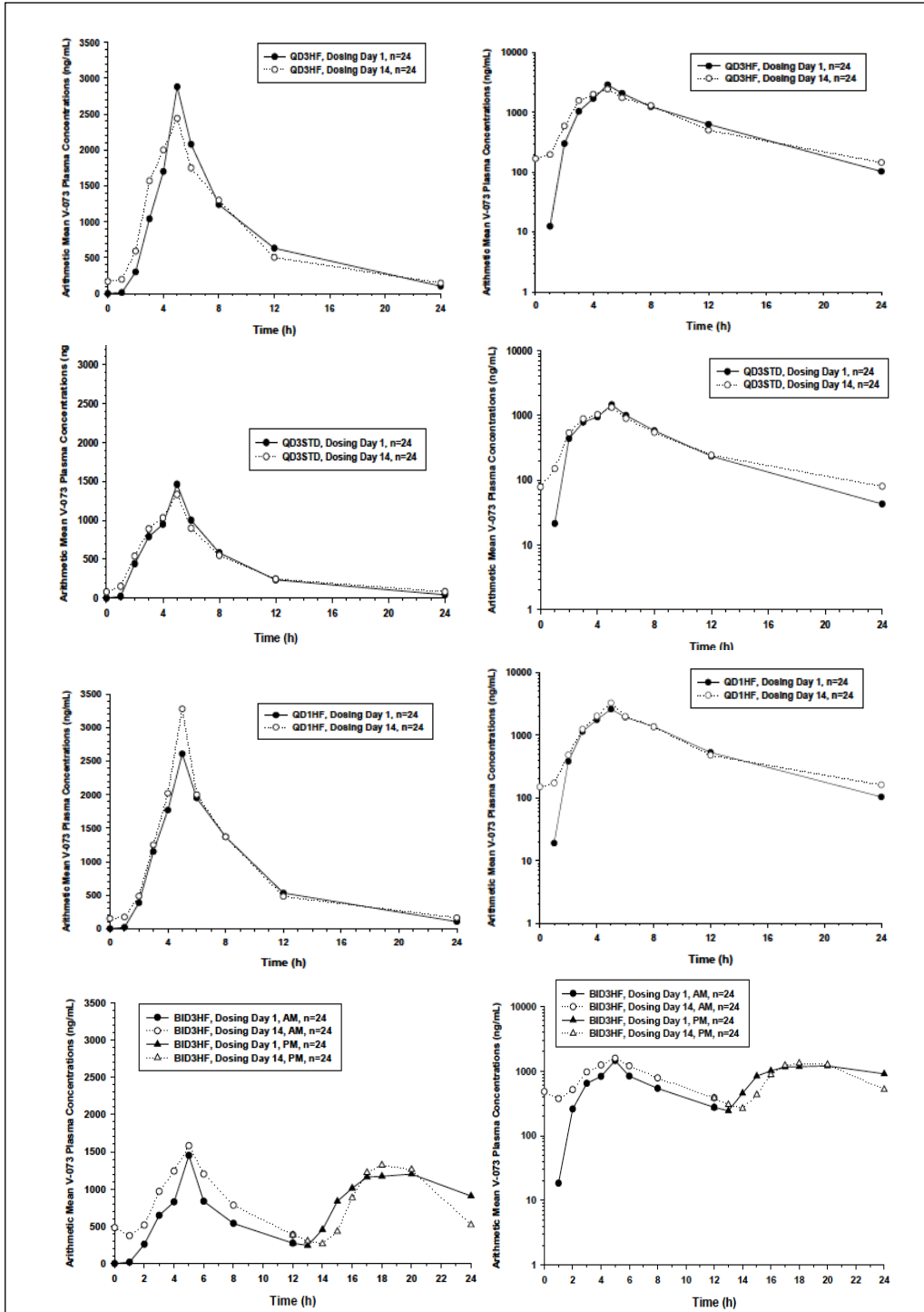
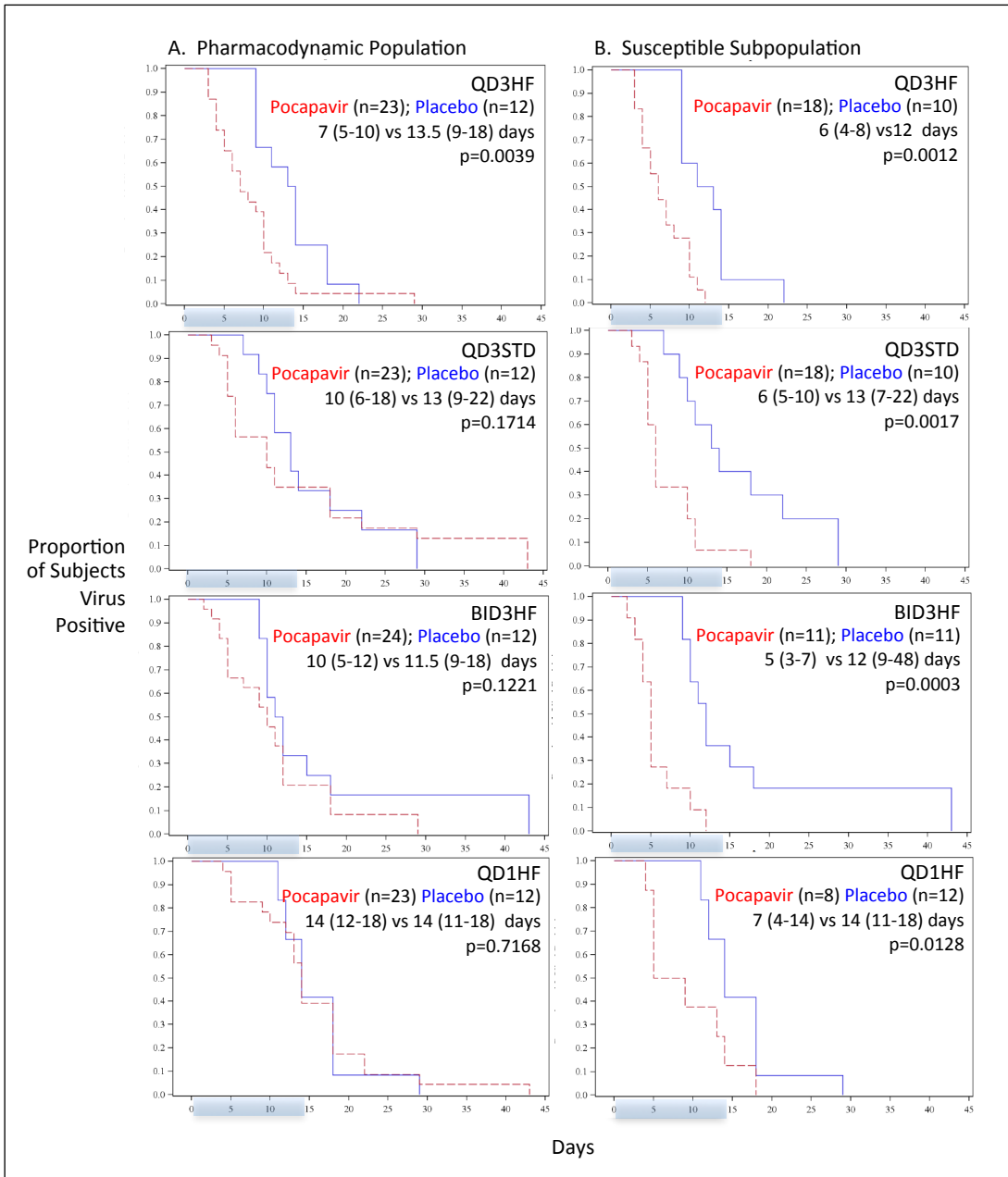
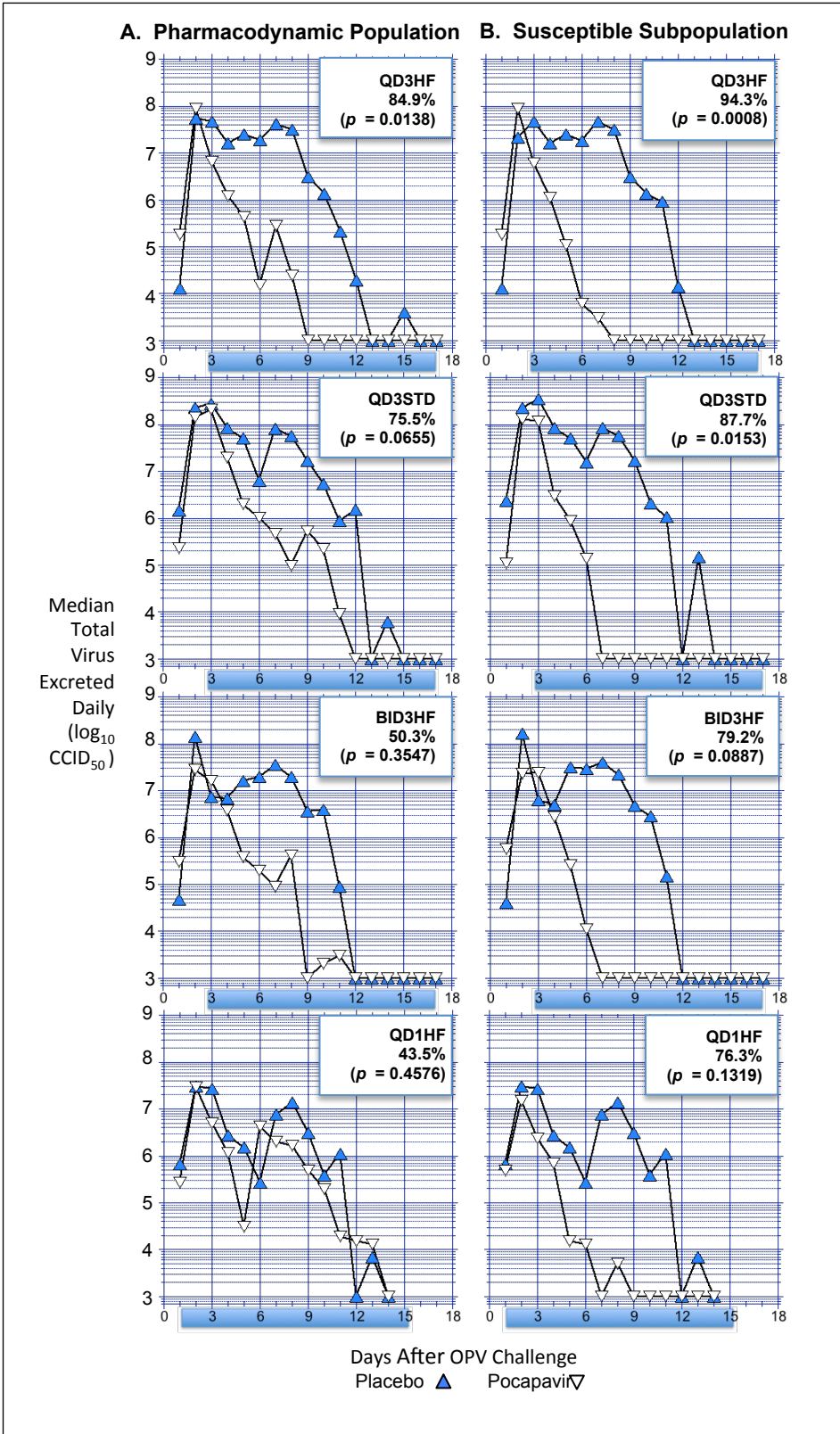


Figure S1: Arithmetic mean of pocapavir plasma concentration-time profiles on dosing day 1 and 14 by cohort on linear and semi-logarithmic scales



**Figure S2:** Kaplan-Meier plots of time in days from initiation of treatment to virus excretion negativity by cohort for the Pharmacokinetic Population (A) and Susceptible Subpopulation (B). Shaded days, treatment days; (95%CI)



**Figure S3: Median total virus excreted in stool by cohort for the Pharmacokinetic Population (A) and Susceptible Subpopulation (B).** Shaded days, treatment days; % reduction of total excreted virus by actives relative to cohort matched placebos.

Variable	QD3HF		BID3HF		QD1HF		QD3STD		All Combined		All Combined	
	Pocapavir (N=24)	Placebo (N=12)	Pocapavir (N=24)	Placebo (N=12)	Pocapavir (N=24)	Placebo (N=12)	Pocapavir (N=24)	Placebo (N=12)	Pocapavir (N=96)	Placebo (N=48)	n	N (%)
Any AE	13 (54.2%)	19 (75.0%)	14 (58.3%)	29 (83.3%)	17 (70.8%)	9 (75.0%)	44 (66.7%)	16 (66.7%)	126 (62.5%)	8 (66.7%)	60	88 (75.0%)
AE Intensity												
Mild	8 (33.3%)	18 (66.7%)	12 (50.0%)	27 (75.0%)	17 (70.8%)	13 (75.0%)	43 (62.5%)	15 (62.5%)	118 (54.2%)	5 (41.7%)	52	81 (64.6%)
Moderate	4 (16.7%)	1 (8.3%)	2 (8.3%)	2 (8.3%)	0	0	1 (4.2%)	3 (25.0%)	7 (7.3%)	7 (10.4%)	7	5
Severe	1 (4.2%)	0	0	0	0	0	0	0	1 (1.0%)	0	0	0
AE Relationship												
Not	9 (37.5%)	14 (41.7%)	11 (45.8%)	18 (58.3%)	14 (58.3%)	9 (75.0%)	38 (58.3%)	14 (58.3%)	102 (50.0%)	5 (41.7%)	48	63 (54.2%)
Unlikely	2 (8.3%)	2 (16.7%)	3 (12.5%)	6 (16.7%)	2 (8.3%)	0	5 (16.7%)	1 (4.2%)	18 (8.3%)	3 (25.0%)	8	17 (14.6%)
Possibly	2 (8.3%)	3 (16.7%)	0	5 (8.3%)	1 (4.2%)	0	1 (4.2%)	1 (4.2%)	6 (4.2%)	0	4	8 (6.3%)
Definitely	0	0	0	0	0	0	0	0	0	0	0	0

Table S1: Summary of Adverse Events by Intensity and Relation to Treatment

Variable	QD3HF		BID3HF		QD1HF		QD3STD		All Combined	
	Pocapavir (N=24)	Placebo (N=12)	Pocapavir (N=24)	Placebo (N=12)	Pocapavir (N=24)	Placebo (N=12)	Pocapavir (N=24)	Placebo (N=12)	Pocapavir (N=96)	Placebo (N=48)
	n	N (%)	n	N (%)	n	N (%)	n	N (%)	n	N (%)
Any AE	13	54.2%	14	58.3%	17	70.8%	16	66.7%	60	62.5%
	28	75.0%	25	83.3%	29	75.0%	44	86.7%	126	88
	9		10		13		9		8	
	19		29		13		9		27	
	75.0%		83.3%		70.8%		75.0%		66.7%	
	25		29		13		9		27	
	83.3%		83.3%		70.8%		75.0%		66.7%	
	10		10		13		9		8	
	14		29		13		9		27	
	58.3%		83.3%		70.8%		75.0%		66.7%	
	29		29		13		9		27	
	83.3%		83.3%		70.8%		75.0%		66.7%	
Organ System										
Cardiac disorders	0	0	0	0	0	0	0	0	0	0
	0	0	1	8.3%	0	0	0	0	0	2
	0	0	1	8.3%	0	0	0	0	0	2
	0	0	0	0	0	0	0	0	0	0
Ear, labyrinth disorders	0	0	0	0	0	0	0	0	0	0
	0	0	0	0	0	0	0	0	0	0
	0	0	0	0	0	0	0	0	0	0
	0	0	0	0	0	0	0	0	0	0
Eye disorders	0	0	0	0	1	4.2%	0	0	1	1.0%
	0	0	0	0	1	4.2%	0	0	1	1.0%
	0	0	0	0	0	0	0	0	0	0
	0	0	0	0	0	0	0	0	0	0
Gastrointestinal disorders	5	20.8%	4	16.7%	5	20.8%	3	12.5%	17	17.7%
	10	41.7%	14	33.3%	5	41.7%	9	25.0%	31	35.4%
	6	41.7%	4	33.3%	5	41.7%	9	25.0%	31	35.4%
	20.8%		16.7%		20.8%		12.5%		17.7%	
General disorders, admin site conditions	2	8.3%	0	0	0	0	2	8.3%	4	4.2%
	1	8.3%	2	8.3%	0	0	2	8.3%	4	4.2%
	1	8.3%	2	8.3%	0	0	2	8.3%	4	4.2%
	8.3%		8.3%		0	0	8.3%		4.2%	
Immune system disorders	0	0	1	4.2%	1	4.2%	0	0	2	2.1%
	0	0	1	4.2%	1	4.2%	0	0	2	2.1%
	0	0	0	0	1	4.2%	0	0	2	2.1%
	0	0	0	0	1	4.2%	0	0	2	2.1%
Infections, infestations	6	25.0%	8	33.3%	4	16.7%	6	25.0%	24	25.0%
	1	8.3%	9	33.3%	6	16.7%	7	25.0%	29	25.0%
	1	8.3%	3	25.0%	2	16.7%	4	25.0%	10	18.8%
	25.0%		33.3%		16.7%		25.0%		25.0%	
Injury, poisoning and procedural complications	1	4.2%	0	0	0	0	0	0	1	1.0%
	0	0	0	0	0	0	0	0	0	0
	0	0	0	0	2	16.7%	2	16.7%	1	1.0%
	4.2%		0	0	16.7%		16.7%		1.0%	
Musculoskeletal, connective tissue disorders	2	8.3%	0	0	0	0	4	12.5%	6	5.2%
	3	25.0%	0	0	0	0	4	12.5%	6	5.2%
	2	8.3%	0	0	0	0	4	12.5%	6	5.2%
	8.3%		0	0	0	0	12.5%		5.2%	
Nervous system disorders	3	12.5%	5	20.8%	10	41.7%	11	45.8%	29	30.2%
	7	33.3%	5	33.3%	14	41.7%	21	45.8%	45	30.2%
	3	33.3%	5	33.3%	14	41.7%	21	45.8%	45	30.2%
	12.5%		20.8%		41.7%		45.8%		30.2%	
Renal, urinary disorders	0	0	1	4.2%	0	0	0	0	1	1.0%
	0	0	1	4.2%	0	0	0	0	1	1.0%
	0	0	1	4.2%	0	0	0	0	1	1.0%
	0	0	1	4.2%	0	0	0	0	1	1.0%
Reproductive system, breast disorders	1	4.2%	0	0	1	4.2%	0	0	3	3.1%
	0	0	1	4.2%	0	0	0	0	3	3.1%
	0	0	1	4.2%	0	0	0	0	3	3.1%
	4.2%		4.2%		0	0	0	0	3.1%	
Respiratory, thoracic, mediastinal disorders	1	4.2%	0	0	0	0	1	4.2%	2	2.1%
	1	4.2%	0	0	0	0	1	4.2%	2	2.1%
	1	4.2%	0	0	0	0	1	4.2%	2	2.1%
	4.2%		0	0	0	0	4.2%		2.1%	
Skin subcutaneous tissue disorders	0	0	0	0	0	0	0	0	0	0
	0	0	0	0	0	0	0	0	0	0
	0	0	3	16.7%	2	16.7%	0	0	0	0
	0	0	3	16.7%	2	16.7%	0	0	0	0
	0	0	16.7%		16.7%		0	0	0	0
Vascular disorders	1	4.2%	0	0	0	0	0	0	1	1.0%
	0	0	0	0	0	0	0	0	1	1.0%
	0	0	0	0	0	0	0	0	1	1.0%
	4.2%		0	0	0	0	0	0	1.0%	

Table S2: Summary of Adverse Events by Organ System Involved