

An Informatics Search for the Low-Molecular Weight Chromium-Binding Peptide

Deendayal Dinakarpandian,¹ Vincent Morrissette, Shveta Chaudhary, Kambiz Amini, Brian Bennett,² J. David Van Horn*

Department of Chemistry, University of Missouri-Kansas City, 5110 Rockhill Road, Kansas City, MO 64110, USA.

¹ Division of Computer Science and Electrical Engineering, School of Computing and Engineering, University of Missouri-Kansas City, Kansas City, MO 64110, USA.

³ National Biomedical EPR Center, Medical College of Wisconsin, Milwaukee, WI 53226 USA.

*Corresponding author

Email addresses:

DD: dinakard@umkc.edu

VM: morrissettev@umkc.edu

SC: chaudharys@umkc.edu

KA: kaz54@umkc.edu

BB: bbennett@mcw.edu

JDVH: vanhornd@umkc.edu

Supporting Figures

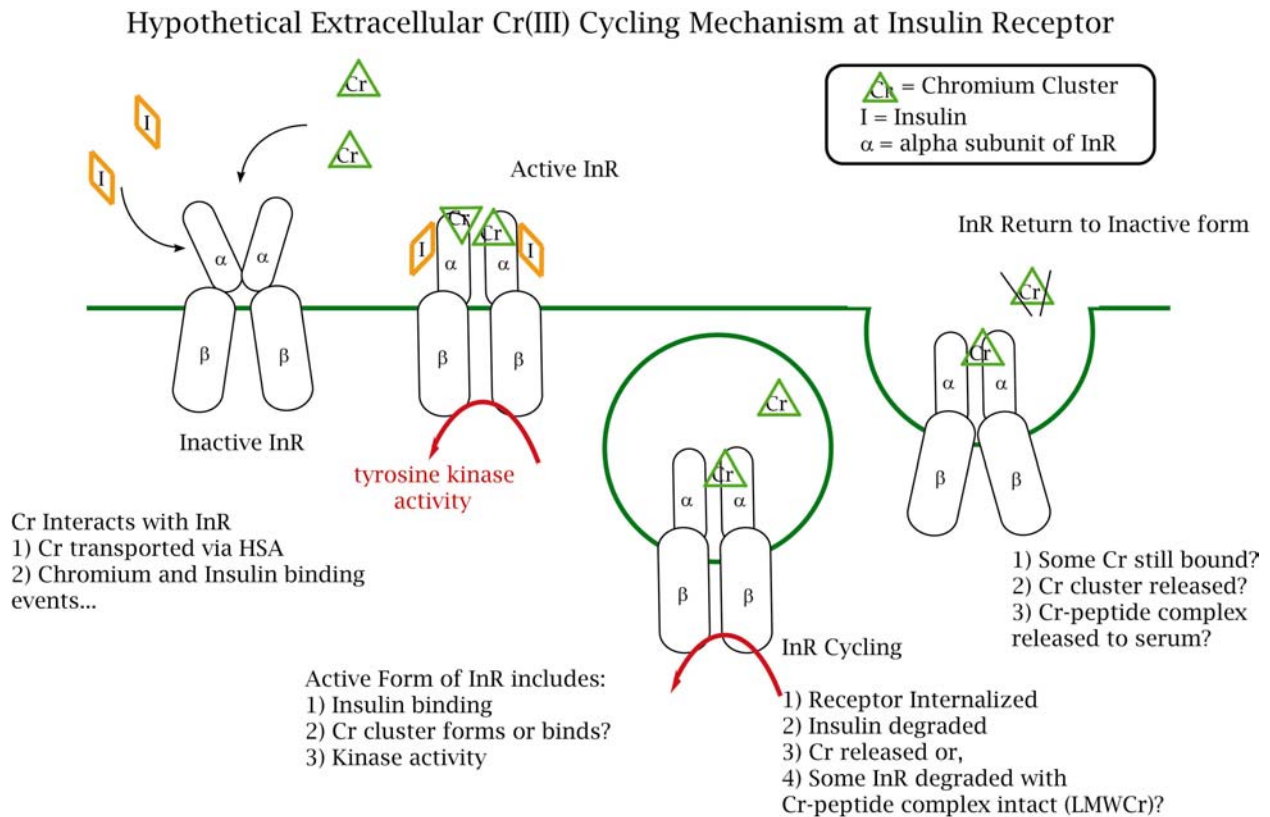


Figure S1
 Hypothetical Extracellular Cr(III) Cycling Mechanism at Insulin Receptor. Details of Cr(III) serum transport and interactions with serum proteins is not specified in this Figure.

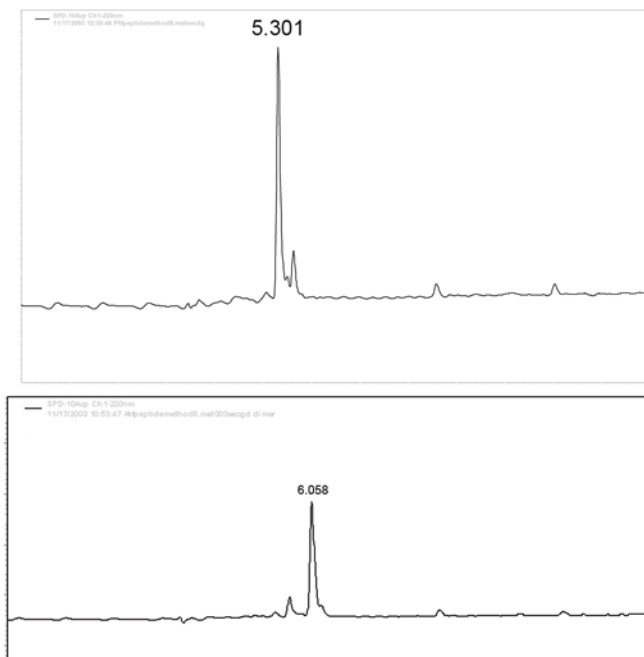


Figure S2. HPLC traces of Ac-EECGD-CONH₂ (top) and disulfide dimer. See experimental section for conditions.

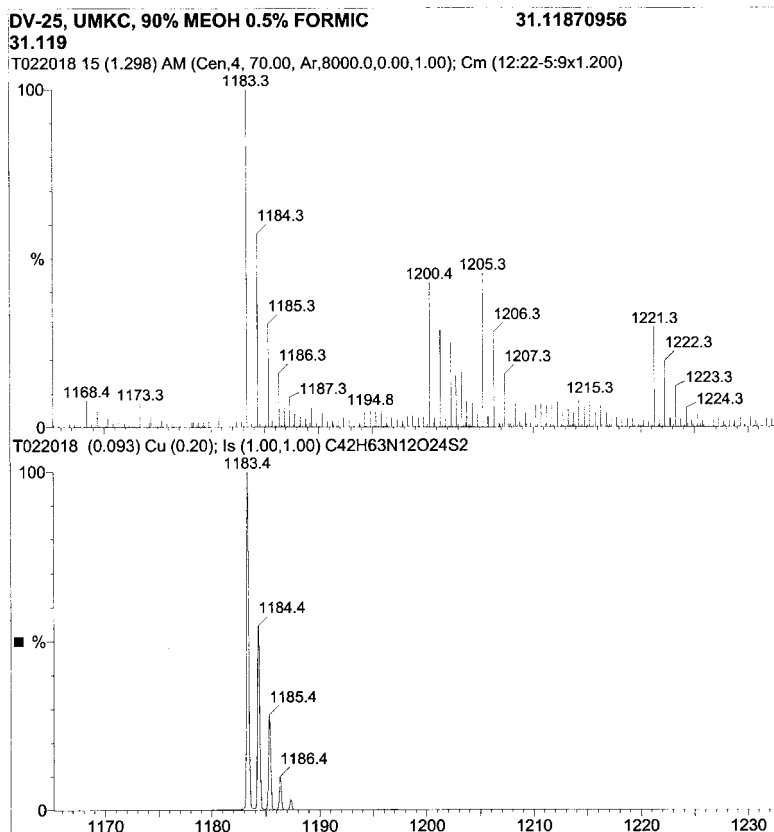


Figure S3
 ESI-MS spectrum of (AcEECGD-CONH₂)₂.

Supporting Materials and Methods:

Comparison to other sequences related to “insulin”. All protein sequences derived from SwissProt for the search, “insulin human”, were compiled and compared for sequence analogy (83 entries) and for duplicates in **Table S2** (5 duplicates). Of the remaining 78 entries, only IGR1 (see text), has sequence similarity to EECGD.

Supporting Tables

Table S1.

Sequence information used in this study for proteins related to the insulin signaling pathway (20 entries). Sequences related to “insulin human” (78 entries), derived from SwissProt, are not shown.

1	<p>>sp P01308 INS_HUMAN Insulin precursor - Homo sapiens (Human). MALWMRLLPLLALLLWGPDPAAAFVNQHLCGSHLVEALYLVCGERGFFYTPKTRREAED LQVGGVELGSSQGLKQLALEGSLQKRGIVEQCCTSICSLYQLENYCN</p>
2	<p>>sp P06213 INSR_HUMAN Insulin receptor precursor (EC 2.7.1.112) (IR) (CD220 antigen) - Homo sapiens (Human). MGTGGRRGAAAAPLLVAVAALLLGAAGHLYPGEVCPGMDIRNNLRLHELENCVIEGHL QILLMFKTRPEDFRDLSFPKLIMITDYLLLFVYGLSESLKDLFPNLTVIRGSRFLFNAL VIFEMVHLKELGLYLNLMNITRGSVRIEKNNECYLATIDWSRILDSVEDNYIVLNKDDNE ECGDICPGTAKGKTNCPATVINGQFVERCWTSHCQKVCPTICKSHGCTAEGLCCHSECL GNCSQDDPTKCVACRNFYLDGRCVETCPPPYHFQDWRCVNFSCQDLHHKCKNSRRQG CHQYVIHNNKCIPECPGTYMNSSNLLCTPCLGPCPKVCHLLEGEKTIIDSVTSAQELRGC TVINGSLIINIRGGNNLAAELEANLGLIEEISGYLKIIRSYALVLSLFFRKLRLIRGETL EIGNYSFYALDNQNLRLQLDWDSKHNLTQTQKLFHYNPKLCLSEIHKMEEVSGTKGRQE RNDIALKTNGDKASCENELKFSYIRTSFDKILLRWEFYWPPDFRDLGFMFLFYKEAPYQ NVTEFDGQDACGSNSWTVVDIDPPLRSNDPKSQNHGWLGRGLKPTQYAFVKTIVTF DERTYGAKSIIYVQTDATNPSVPLDFISVSNSSQIILKWKPPSDPNGNITHYLVFWE RQAEDELFDYCLGKLPKLPRTWSPFSEDSQKHNQSEYEDSAGECCSCPCTDSQIL KELEESSFRKTFEDYLHNVVVPRKTSSTGAEPRPSRKRSLGVDVGNVTVAAPTVAAF PNTSSTSVPTSPEEHRPFKVVNKESLVISGLRHFTGYRIELQACNQDTPPEERCSVAAYV SARTMPEAKADDIVGPVTHEIFENNVVHLMWQEPKEPNGLIVLYEVSRYRYGDEELHLCV SRKHFALERGCRLRGLSPGNYSVRIRATSLAGNGSWTEPTYFYVTDYLDVPSNIAKIIIG PLIFVFLFSVVIIGSIYFLRKRQPDGPLYASSNPEYLSASDVFPSCSVYVPDEWEVSR EKITLLRELQGSFGMVYEGNARDIIGEAETRVAVKTVNESASLRERIEFLNEASVMKG FTCHHVRLGVSQGPPTLVVMEMLAHGDLKSYLRSRPEAENNGRPPPTLQEMIQMA AEIADGMAYLNAKKVFHRDLAARNCMVAHDFTVKIGDFGMTRDIYETDYRKGKGLLPV RWMAPESLKDGVFTTSSDMWSFGVVLWEITSLAEQPYQGLSNEQVLFVMDGGYLDQPDN CPERTDLMRMCWQFNPKMRPTFLEIVNLLKDDLHPSFPEVSFFHSEENKAPESSELEME FEDMENVPLDRSSHQREEAGRDGSSSLGFKRSYEEHIPYTHMNGGKKNGRILTLPRSN PS</p>
3	<p>>sp P14672 GTR4_HUMAN Solute carrier family 2, facilitated glucose transporter, member 4 (Glucose transporter type 4, insulin-responsive) - Homo sapiens (Human). MPSGFQQIGSEDEPPQQRVTGTLVAVFSAVLGSLQFGYNIGVINAPQKVIEQSYNETW LGRQGPPEGPSSIPPGTLTLWALSVAIFSVGGMISFLIGIISQWLGRKRAMLVNNVAV LGGSLMGLANAASAYEMLILGRFLIGAYSGLTSGLVPMYVGEIAPTHLRGALGTLNQLAI VIGILIAQVLGLESLLGTASLWPLLGLTVLPALLQLVLLPFCPESPRYLYIIQNLEGPA RKSLKRLTGWADVSGVLAELKDEKRLERERPLSLQLLGSRTHRQPLIIAVVLQLSQQL SGINAVFYSTSI FETAGVGPAYATIGAGVVNTVFTLVSVLLVERAGRRTLHLLGLAGM CGCAILMTVALLLLERVPAMSYVSIIVAFGFVAFFEIGPGPIPFIVAELEFSQGRPAAM AVAGFSNWTNSFIIGMGFYVAEAMGPYVFLFAVLLLGFFIFTFLRVPETRGRTFDQIS AAFHRTPSLLEQEVKPESTELEYLGPDEND</p>
4	<p>>sp P42336 P11A_HUMAN Phosphatidylinositol-4,5-bisphosphate 3-kinase catalytic subunit, alpha isoform (EC 2.7.1.153) (PI3-kinase p110 subunit alpha) (PtdIns-3-kinase p110) (PI3K) - Homo sapiens (Human). MPPRPSSGELWGIHLMPPRILVECLLPNGMIVTLECLREATLVTIKHELKFEARKYPLHQ LLQDESSYIFVSVTQEAEREFFDETRRLCDLRLFPFLKVIIEPVGNRREKILNREIGFA IGMPVCEFDMVKDEPVQDFRRNINLVCKEAVDLRDLNSPHSRAMYVYPHVESSPELPHK IYNKLDRGQIIIVVIWVIVSPNNDKQKYTLKINHDCVPEQVIAEAIKKTTRSMLLSSEQLK LCVLEYQGYILKVCGCDEYFLEKYPLSQYKIRSCIMLGRMPNLKMMAKESLYSQLPMD CFTMPYSRRISTATPYMNGETSTKSLWVINRALRIKILCATYVNLNIRDIDKIYVRTGI YHGGEPLCDNVNTQRVPCSNPRWNEWLNLDIYIPDLPRARLCLSCSVKGRKGAKKEEHC PLAWGNINLFDYTDTLVSGKMALNLWVPHGLEDLNPIGVTSNPNKETPCLELEFDWF</p>

	<p>SSVVKFPDMSVIEEHANWSVSREAGFSYSHAGLSNRLARDNELRENDKEQLKAISTRDPL SEITEQEKDFLWSHRHYCVTIPEILPKLLLSVKWNSRDEVAQMYCLVKDWPPIKPEQAME LLDCNYPDPMVRGFAVRCLEKYLTDKLSQYLIQLVQVLKYEQYLDNLLVRFLLKKALTN QRIGHFFFWHLKSEMHNKTVSQRFGLLLESYCRACGMYLKHLNRQVEAMEKLINLTDILK QERKDETKQVQMKFLVEQMRRPDMDALQGLLSPLNPAHQGLNLRKKECRIMSSAKRPLW LNWENPDIMSELLFQNEIIFKNGDDLQDMLTLQIIRIMENIWQNQGLDLRMLPYGCLS IGDCVGLIEVVRNSHTIMQIQCKGGLKALQFNSTLHQWLKDKNKGEIYDAAIDLFTRS CAGYCVATFILGIGDRHNSNIMVKDDGQLFHIDFGHFLDHKKKFKGYKRERVPVLTQDF LIVISKGAQECTKTREFERFQEMCYKAYLAIRQHANLFINLFSMMLGSGMPELQSFDDIA YIRKTLALDKTEQEALEYFMKQMNDAHHGGWTTKMDWIFHTIKQHALN</p>
5	<p>>sp Q9Y4H2 IRS2_HUMAN Insulin receptor substrate-2 (IRS-2) - Homo sapiens (Human). MASPPRHGPPGPASGDGPNLNNNNNNNSVRKCGYLKQKHGHRKRFVLRGPGAGGDKA TAGGGSAPQPRLYYESEKNWRSKAGAPKRVIALDCCLNINKRADPKHKYLIALLYTKDE YFAVAEENEQEQEGWYRALTDLVSEGRAAAAGDAPAAAAPAASCSASLPGAVGGSAGAAGA EDSYGLVAPATAAYREVWQVNLKPKGLGQSKNLTGVYRLCLSARTIGFVKLNCEQPSVTL QLMNIRRCGHSDSFFFIEVGRSAVTGPGEIWMQADDSVVAQNIHETILEAMKALKELFEF RPRSKSQSSGSSATHPI SVPGARRHHHLVNLPPSQTGLVRRSRDLSLAATPPAAKCSSCR VRTASEGDGGAAGAAAAGARPVSVAGSPLSPGPVRAPLRSRSHLIGGCRAAGTKWHCFP AGGGLQHSRSMSPVEHLPPAATSPGSLSSSSDHGWSYPPPPGPHPLPHPLHHGPGQR PSSGSASASGSPDPGFMSLDEYGS SPGDLRAFCSHRSNTPESIAETPPARDGGGGGEFY GYMTMDRPLSHCGRSYRRVSGDAAQDLDRGLRKRYSLTTPARQRPVQPSSASLDEYTL MRATFSGSAGRLCPCSPASSPKVAYHPYPEDYGDIEIGSHRSSSSNLGADDGYMPTPGA ALAGSGSGSCRSDDYMPMSPASVSAPKQILQPRAAAAAAAVPFAGPAGPAPTFAAGRTF PASGGYKASSPAESSPEDSGYMRMWCCKLSMEHADGKLLPNGDYLVNPSDAVTTGTP PDDFSAALHPGGEPLRGVPGCCYSSLPKSYKAPYTCGGSDSQYVLMSSPVGRILEEERLE PQATPGPTQAASAFGAGPTQPPHPVVPSPVPSVPSGGRPEGLGQRGRAVRPTRLSSLEGLPS LPSMHYPLPPEPKSPGEYINIDFGEFGARLSPAPPLLSAASSSSLLSASSPALSLSGS GTPGTSSDSRQRSPLSDYMNLDFFSSPKSPKPGAPSGHPVGSGLDGLLSPASSPYPLPPR PSASPSSSLQPPPPPPAPGELYRLPPASAVATAQPGAASSLSSDTGDNGDYTEMAFGVA ATPPQPIAAPPKPEAARVASPTSGVKRLSLMEQVSGVEAFLQASQPPDPHRGAKVIRADP QGGRRRHSSETFSSTTTVTPVSPFAHNPKRHNSASVENVSLRKSSEGGVGVGPGGGDEP PSPRQLQFAPPLAPQGRPWTGPGGLVGCPSGSGSPMRRETSAGFQNLKYIAIDVRE EPGLPPQPPPPPLPQPGDKSSWGRTRSLGGLISAVGVGSTRGGCGGPGGAPAPCPTT YAQH</p>
6	<p>>sp P29354 GRB2_HUMAN Growth factor receptor-bound protein 2 (GRB2 adapter protein) (SH2/SH3 adapter GRB2) (ASH protein) - Homo sapiens (Human), and Rattus norvegicus (Rat). MEAIKDYDFKATADELSFKRGDILKVLNEECDQNWYKAELNGKDFIPKNIYIEMKPHPW FFGKI PRAKAEEMLSKQRHDGAFILRESE SAPGDFLSVKFGNDVQHFVLRDAGKYFL WVVKFNSLNLVDYHRSTSVSRNQIIFLRDIEQVPPQPTTYVQALFDFDPQEDGELGFRRG DFIHVMDNSDPNWWKGACHGQTGMFPRNYVTPVNRNV</p>
7	<p>>sp P29353 SHC_HUMAN SHC transforming protein - Homo sapiens (Human). MDLLPKPKYNPLRNESLSSLEEGASGSTPPEELPSPSASSLGPILPPLPGDSDPTTLC FFPRMSNLRANPAGGRPGSKGEPGRAADDGEGIDGAAMPESGPLPLLQDMNKLSGGGR RTRVEGGQLGGEWTRHGSFVNKPTRGWLHPNDKVMGPGVSYLVRYMGCVEVLQSMRALD FNTRTQVTREAI SLVCEAVPGAKGATRRRKPCSRPLSSILGRSNLKFAGMPITLTVSTSS LNLMAADCKQIIANHHMQSISFASGGDPDTAEYVAVYAKDPVNQRACHILECPEGLAQDV ISTIGQAFELRFKQYLRNPPKLVTPHDMAGFDGSAWDEEEEEPPDHQYNDPFGKEPPL GGVDMRLREGAAPGAARPTAPNAQTPSHLGATLPVQGPVGGDPEVRKQMPPPPPCPGFE LFDDPSYVNVQNLDKARQAVGGAGPPNPAINGSAPRDLFDMKPFEDALRVPPPPQSVSMA EQLRGEFPWFHGKLSRREAEALLQLNGDFLVRESTTTPGQYVLTGLQSGQPKHLLLVDFEG VVRTKDRHFESVSHLISYHMDNHLPIISAGSELCLQQPVERKL</p>
8	<p>>sp Q07889 SOS1_HUMAN Son of sevenless protein homolog 1 (SOS-1) - Homo sapiens (Human). MQAQQPLPYEFFSEENAPKWRGLLVPALKKVVQGVHPTLESNDALQYVEELILQLNMLC QAQPRASDVEERVQKSFPHPIDKWAIDAAQSAIEKRKRRNPLSLPVEKIHPLLKEVLGY KIDHQVSVYIVAVLEYISADILKLVGNVVRNIRHYEITKQDIKVMCADKVLMDMFHQDV EDINILSLTDEEPSTSGEQTYDYLKAFMAEIRQYIRELNLIKVFREPFVSNKLFESAN</p>

	<p>DVENIFSRIVDIHELKSVKLLGHIEDTVEMTDEGSPHPLVGVSCFEDLAEELAFDPYESYAR DILRPGFHDRFLSQLSKPGAALYLSIQSIEGEGFKEAVQYVLPRLLLAPVYHCLHYFELLKQL EEKSEDEQEDKECLKQAITALLNVQSGMEKICSKSLAKRRLSESACRFYSQQMKGKQLAIK KMNEIQKNIDGWEGKDIQCCNEFIMEGTLTRVGAHERHIFLFDGLMICCKSNHGQFRL PGASNAEYRLKEKFFMRKVQINDKDDTNEYKHAFIILKDENSVIFSAKSAEEKNNWMAA LISLQYRSTLERMLDVTMLQEEKEEQMRLPSADVRFAPDSEENIIFEENMQPKAGIPI IKAGTVIKLIERLTYHMYADPNFVRTFLTTRYRSFCKPQELLSLIERFEIPEPEPTADR IAIENGDQPLSAELKRFRKEYIQPVQLRVLNVCRRHWEHFFYDFERDAYLLQRMEEFIGT VRGKAMKKWVESITKIIQRKKIARDNGPGHNITFQSSPPTVEWHISRPGHIETFDLLTLH PIEIRARQLTLES DYRAVQPSSELVGSVWTKEDKEINSPNLLKMIRHTTNLTLWFKECIV ETENLEERVAVVSRIEILQVFQELNNFNGVLEVV SAMNSSPVYRLDHTFEQIPSRQKKI LEEAEHLESDHYKYLAKLRSINPPCVFFGIYLTNLIKTEEGNPEVLKRHGKELINFSK RRKVAETITGEIQYQYQNPYCLRVEDIKRFFENLNPMSMEKEFTDYLFNKSLIEPRN PKPLPRFPKKYSYPLKSPGVRPSNRPPTMRHPTPLQEQPRKISYSRIPESETESTASAP NSPRTLTPPPASGASSTTDVCSVFDSDHSSPFHSSNDTVFIQVTLPHGPRSASVSSISL TKGTDEVVPPPPVPPRRRPESAPAESSPSKIMSKHLDSPPAIPPRQPTSKAYS PRYSISD RTSISDPPEPSPLLPPREPVRTPDVFSSSPLHLQPPPLGKKS DHGNAFFPNSPSPFTPPP PQTPSPHGTRRHLPSPPLTQEVDLHSIAGPPVPPRQSTSQHIPKLPKTYKREHTHPSMH RDGPPLLENAHSS</p>
9	<p>>sp P01112 RASH_HUMAN Transforming protein p21/H-Ras-1 (c-H- ras) - Homo sapiens (Human). MTEYKLVVVGAGGVGKSALTIQLIQNHVDEYDPTIEDSYRKQVVIDGETCLLDILDTAG QEEYSAMRDQYMRGTGEGFLCVFAINNTKSFEDIHQYREQIKRVKSDDVPMVLVGNKCDL AARTVESRQAQDLARSYGIPYIETS AKTRQGVDAFYTLVREIRQHKLRLKLNPPDESGPG CMSCKCVLS</p>
10	<p>>sp P20936 RSG1_HUMAN Ras GTPase-activating protein 1 (GTPase- activating protein) (GAP) (Ras p21 protein activator) (p120GAP) (RasGAP) - Homo sapiens (Human). MMAAEAGSEEGGPVTAGAGGGGAAAGSSAYPAVCRVKI PAALPVAAA PYPGLVETGVAGT LGGGAALGSEFLGAGSVAGALGGAGLTGGGTAAGVAGAAAGVAGAAVAGPSGDMALTKLP TSLLAETLGGGGFPPLPPPPYLPPLGAGLGTVDEGDSLGDGPEYEEEEVAIPLTAPPTNQ WYHGKLDRTIAEERLRQAGKSGSYLIRESDRRPFGS FVLSFLSQMNVVNHFRIIAMCGDYY IGGRRFSSLDLIGYYSHVSCLLKGEKLLYPVAPPEPVEDRRRVRAILPYTKVPDTEIS FLKGMDFIVHNELEDGWMWVTNLRTEQGLIVEDLVEEVGREEDPHEGKIWFHGKISKQE AYNLLMTVGQVCSFLVRPSDNTPGDYSLYFRTNENIQRFKICPTPNNQFMMGGRYNSIG DIIDHYRKEQIVEGYLKEPVPMDQEQVNLNDTVDGKEIYNTIRRKTKDAFYKNIVKKG LLKKGKGRKWNLYFIFLEGSDAQLTYFESEKRATKPKGLIDL SVCSVYVVHDSLFG RPNCFQIVVQHFSEEHYIFYFAGETPEQAEDWMKGLQAF CNLRKSSPGTSNKR LRQVSSLVLHI EEAHKLPVKHFTNPYCNILNSVQVAKTHAREGQNPVWSEEFVDDLPPDINRFEITLSN KTKKSDPDILFMRCQLSRLQKGHATDEWFLSSHIPKLGIEPGSLRVRARYSMEKIMPE EEYSEFKELILQKELHVYALSHVCGQDR TLLASILLRIFLHEKLESLLLCTLNDR EISM EDEATTLFRATTLASTLMEQYMKATATQFVHHALKDSILKIMESKQSCELSPSKLEKNE D VNTNLTHLLNILSELVEKIFMASEILPPTLRYIYGCLQKSVQHKWPTNTTMRTRVVS G FVFLRLICPAILNPRMFNIISD SPSPIAARTLILVAKSVQNLANLVEFGAKEPYMEGVNPF I KSNKHRMIMFLDELGNVPELPTTTEHSRTDLSRDLAALHEICVAHSDELRTLSNERGAQ Q HVLKLLAITELLQQKQNYTKTNDVR</p>
11	<p>>sp Q9UHA4 MKI1_HUMAN Mitogen-activated protein kinase kinase 1 interacting protein 1 (MEK binding partner 1) (Mpl) (PRO2783) - Homo sapiens (Human). MADDLKRFLYKKLPSVEGLHAIIVS DRDGVPIKVANDNAPEHALRPGFLSTFALATDQG SKLGLSKNKSIICYNTYQVVQFNRLPLVVSFIASSANTGLIVSLEKELAPLFEELRQV VEVS</p>
12	<p>>sp Q02750 MPK1_HUMAN Dual specificity mitogen-activated protein kinase kinase 1 (EC 2.7.1.-) (MAP kinase kinase 1) (MAPKK 1) (ERK activator kinase 1) (MAPK/ERK kinase 1) (MEK1) - Homo sapiens (Human). PKKKPTPIQLNPAPDGS AVNGTSSAETNLEALQKKLELELDEQQRKRLEAFLTQKQKVG ELKDDDFEKISELGAGNGGVVFKVSHKPSGLVMARKLIHLEIKPAIRNQIIRELQVLHEC NSPYIVGFYGFYSDGEISICMEHMDGGLDQVLK KAGRIPEQILGKVSIAVIKGLTYLR EKHKIMHRDVKPSNILVNSRGEIKL CDFGVSGQLIDSMANSFVGTRSYMSPERLQGTHYS</p>

	VQSDIWSMGLSLVEMAVGRYPIDPPDAKELELMFGCQVEGDAAETPPRPRTGRPLSSYG MDSRPMMAIFELLDYIVNEPPPKLPSGVFSLEFQDFVNKCLIKNPAERADLKQLMVHAFI KRSDAEEVDFAGWLCSTIGLNQPSPTHAAGV
13	>sp P27361 MK03_HUMAN Mitogen-activated protein kinase 3 (EC 2.7.1.37) (Extracellular signal-regulated kinase 1) (ERK-1) (Insulin-stimulated MAP2 kinase) (MAP kinase 1) (MAPK 1) (p44- ERK1) (ERT2) (p44-MAPK) (Microtubule- associated protein-2 kinase) - Homo sapiens (Human). MAAAAAQGGGGEPRTTEGVGPGVPEVEMVKGQPFVGVPRYTQLQYIGEGAYGMVSSAY DHVRKTRVAIKKISPFHQTYCQRTLREIQILLRFRHENVIGIRDILRASTLEAMRDVYI VQDLMETDLYKLLKSQQLSNHDICYFLYQILRGLKYIHSANVLHRDLKPSNLLINTCDL KICDFGLARIADPEHDHTGFLTEYVATRWYRAPEIMLNSKGYTKSIDIWSVGCILAEMLS NRPIFPKHYLDQLNHILGILGSPSQEDLNCCIINMKARNYLQSLPSKTKVAWAKLFPKSD SKALDLLDRMLTFNPNKRITVEEALAHPLYEQYYDPTDEPVAEEPTTFAMELDDLPERL KELIFQETARFQPGVLEAP
14	>sp P19419 ELK1_HUMAN ETS-domain protein ELK-1 - Homo sapiens (Human). MDPSVTLWQFLLQLLREQNGHIIISWTSRDGGEFKLVDAEEVARLWGLRKNKTNMNYDKL SRALRYDYDKNIIRKVSQKQFVYKFSYPEVAGCSTEDCPPQPEVSVTSTMPNVAPAAIH AAPGDTVSGKPGTPKGAGMAGPGLARSSRNEYMRSGLYSTFTIQSLQPQPPHPRFAVV LPSAAPAGAAAPPSSRSTSPSPLEACLEAAEEAGLPLQVILTPPEAPNLKSEELNVEPGL GRALPPEVKVEGPKKELEVAGERGFVETTKAEPEVPPQEGVPARLPAVVMMDTAGQAGH AASSPEISQPQKGRKPRDLELPLSPLLLGGPGPERTPGSGSGSGLQAPGPALTPSLPTH TLTPVLLTPSSLPPSIHFWSTLSPIAPRSPAKLSFQFPSSGSAQVHIPISISVDGLSTPVV LSPGPQKP
15	>sp Q06124 PTNB_HUMAN Protein-tyrosine phosphatase, non- receptor type 11 (EC 3.1.3.48) (Protein-tyrosine phosphatase 2C) (PTP-2C) (PTP-1D) (SH-PTP3) (SH- PTP2) (SHP-2) - Homo sapiens (Human). MTRSRRWFHPNITGVEAENLLLTRGVDSFLARPSKSNPGDFTLSVRRNGAVTHIKIQNTG DYDLYGGGKFFATLAEVLVQYMEHHGQLKEKNGDVIELKYPLNCADPTSERWFHGHLSGK EAEKLLTEKKGKHSFLVRESQSHPGDFVLSVRTGDDKGESNDGKSKVTHVMIRCQELKYD VGGGERFDSLTDLVEHYKKNPMVETLGTVLQLKQPLNTRINAAEIESRVRELSKLAETT DKVKQGFWEFETLQQQECKLLYSRKEGQRQENKKNRYKNILPFDHTRVVLHDGDPNEP VSDYINANIIMPEFETKCNNSKPKKSYIATQGCLQNTVNDFWRMVFQENSRIIVMTTKEV ERKSKCVKYWPDEYALKEYGVMVRNVKESAADHYTLRELKLSKVGQGNTERTVWQYHF RTWPDHGVPSDPGGVLDLFLEEVHKKQESIMDAGPVVHCSAGIGRTGTFIVIDILIDIIR EKGVDCDIDVPKTIQMVRSQRSGMVQTEAQYRFIYMAVQHYIETLQRRIEEEQSKRKGH EYTNIKYSLADQTSQDQSPLPCTPTPPCAEMREDSARVYENVGLMQQKQKSR
16	>sp P01100 FOS_HUMAN Proto-oncogene protein c-fos (Cellular oncogene fos) (G0/G1 switch regulatory protein 7) - Homo sapiens (Human). MMFSGFNADYEASSRCSASPAGDSLSYHSPADSFSSMGSPVNAQDFCTDLAVSSANF IPTVTAISTSPDLQWLVPALVSSVAPSQTRAPHFPGVPAPSAGAYSRAQVVKMTTGGRA QSIGRRGKVEQLSPEEEKRRIRRRERKMAAAKCRNRRELTDTLQAETDQLEDEKSALQ TEIANLLKEKEKLEFILAAHRPACKIPDDLGFPEEMSVASLDLTGGLPEVATPESEEAFT LPLLNDPEPKPSVEPVKSISSMELKTEPFDDFLFPASSRPSGSETARVDPMDLGSFYA ADWEPLHSGSLGMGMATELEPLCTPVVTCTPSCATYTSFVFTYPEADSFPSCAAHRK GSSNEPSSDSLSSPTLLAL
17	>sp P05412 AP1_HUMAN Transcription factor AP-1 (Activator protein 1) (AP1) (Proto-oncogene c-jun) (V-jun avian sarcoma virus 17 oncogene homolog) (p39) - Homo sapiens (Human). MTAKMETTFYDDALNASFLPSESGPYGYSNPKILKQSMTLNLADPVGSLKPHLRKNSDL LTSPDVGLLKLASPELERLIQSSNGHITTTPTPTQFLCPKNVTDEQEGFAEGFVRALAE LHSQNTLPSVTSAAQPVNGAGMVAVASVAGGSGSGGFSASLHSEPPVYANLSNFPNGA LSSGGGAPSYGAAGLAFPAQPQQQQPPHHLPPQMPVQHPRLQALKEEPQTVPEMPGETP PLSPIDMESQERIKAEKRMRNRNIAASKCRKRKLERIARLEEKVKTAKAQNSELASTANM LREQVAQLKQKVMNHVNSGCQLMLTQQQLQTF

18	<p>>sp P17275 JUNB_HUMAN Transcription factor jun-B - Homo sapiens (Human).</p> <p>MCTKMEQPFYHDDSYPATGYGRAPGGSLHDKLLKPSLAVNLADPYRSLKAPGARGPGP EGGGGGSYFSGQSDTGASLKLASSELERLIVPNSNGVITTTPTPPGQYFYPRGGGSGGG AGGAGGGVTTEEQEGFADGFVKALDDLHKMNHVTPPNVSLGATGGPPAGPGGVYAGPEPPP VYTNLSSYSPASASSGGAGAAVGTGSSYPTTTTISYLPHAPPFAGGHPAQLGLGRGASTFK EEPQTVPEARSRDATPPVSPINMEDQERIKVERKRLRNRLAATKCRKRKLERIARLEDKV KTLKAENAGLSSTAGLLREQVAQLKQKVMTHVSNCGQLLLGVKGHAF</p>
19	<p>>sp P19138 KC21_HUMAN Casein kinase II, alpha chain (CK II) (EC 2.7.1.37) - Homo sapiens (Human), and Bos taurus (Bovine).</p> <p>MSGPVPSRARVYTDVNTHRPREYWDYESHVVEWGNQDDYQLVRKLGKGYSEVFEAINIT NNEKVVVKILKPVKKKIKREIKILENLRGGPNITLADIVKDPVSRTPALVFEHVNTD FKQLYQTLTDYDIRFYMYEILKALDYCHSMGIMHRDVKPHNVMIDHEHRKRLRIDWGLAE FYHPGQEQYNVRVASRYFKGPELLVDYQMYDYSLDMWSLGCMLASMIFRKEPFFHGHNDYD QLVRIAKVLGTEDLDYDIDKYNIELDPRFNDILGRHSRKRWERFVHSENQHLVSPEALDF LDKLLRYDHQSRLTAREAMEHPYFYTVVKDQARMGSSSMPGGSTPVSSANMMSGISSVPT PSPGLPLAGSPVIAAANPLGMPVPAAGAQQ</p>
20	<p>>sp P45983 MK08_HUMAN Mitogen-activated protein kinase 8 (EC 2.7.1.37) (Stress-activated protein kinase JNK1) (c-Jun N-terminal kinase 1) (JNK-46) - Homo sapiens (Human).</p> <p>MSRSKRDNNFYSVEIGDSTFTVLKRYQNLKPIGSGAQGIVCAAYDAILERNVAIKKLSRP FQNQTHAKRAYRELVLMKCVNHKNIIGLLNVFTPQKSLEEFQDVYIVMELMDANLCQVIQ MELDHERMSYLLYQMLCGIKHLHSAGIIHRDLKPSNIVVKSDCTLKILDFGLARTAGTSF MMTPYVVTRYRAPEVILGMGYKENVDLWSVGCIMGEMVCHKILFPGRDYIDQWNKVIEQ LGTPCPEFMKKLQPTVRTYVENRPKYAGYSFEKLPDVLFPADSEHNKLKASQARDLLSK MLVIDASKRISVDEALQHPYINVWYDPSEAEAPPKIPDKQLDEREHTIEEWKELIYKEV MDLEERTKNGVIRGQPSPLGAAVINGSQHPSSSSSVNDVSSMSTDPTLASDTSLEAAA GPLGCCR</p>

Table S2

Results of search from nr database for pentameric sequences containing E:D:G:C::2:1:1:1. A key denoting highlights is below. Disintegrin and ADAM proteins are well represented (30 examples), as well as a number of receptors of various types (34 examples). Entries 347 and 348 are the insulin receptor precursor.

KEY:

ADAM; disintegrin	(yellow highlight)
Zinc	(blue highlight)
receptor	(green highlight)
Insulin	(yellow highlight)
Calcium	(blue, bold)
Sodium; Na	(green, bold)

1. GEECD: 56, >IPI:IPI00288894.1|SWISS-PROT:P78536-1|REFSEQ NP:NP_003174|ENSEMBL:ENSP00000309968 Tax_Id=9606 Splice isoform A of P78536 ADAM 17 precursor
2. GEECD: 64, >IPI:IPI00029606.1|SWISS-PROT:P78536-2|REFSEQ NP:NP_068604|ENSEMBL:ENSP00000281420 Tax_Id=9606 Splice isoform B of P78536 ADAM 17 precursor
3. DECEG: 92, >IPI:IPI00157513.1|REFSEQ NP:NP_640329|TREMBL:Q96RW4|ENSEMBL:ENSP00000276935 Tax_Id=9606 ADAM-TS related protein 1 isoform 1
4. CEDEG: 276, >IPI:IPI00140138.1|REFSEQ NP:NP_064540|TREMBL:Q96N19|ENSEMBL:ENSP00000310351 Tax_Id=9606 Hypothetical protein FLJ31532
5. EDEGC: 276, >IPI:IPI00140138.1|REFSEQ NP:NP_064540|TREMBL:Q96N19|ENSEMBL:ENSP00000310351 Tax_Id=9606 Hypothetical protein FLJ31532
6. EDEGC: 790, >IPI:IPI00215659.1|TREMBL:Q96MX2 Tax_Id=9606 Hypothetical protein FLJ31755
7. CEEGD: 944, >IPI:IPI00173394.2|REFSEQ_XP:XP_210139 Tax_Id=9606 similar to hypothetical protein MGC23885
8. ECEGD: 2026, >IPI:IPI00232476.1|TREMBL:O75341|ENSEMBL:ENSP00000261737 Tax_Id=9606 BRCA1-associated protein 2
9. DGCEE: 2066, >IPI:IPI00097548.1|SWISS-PROT:Q9BZW2|REFSEQ NP:NP_071889|ENSEMBL:ENSP00000194130 Tax_Id=9606 Solute carrier family 13, member 1
10. GCEED: 2248, >IPI:IPI00064885.2|REFSEQ NP:NP_694563|TREMBL:Q96NJ6|ENSEMBL:ENSP00000320347 Tax_Id=9606 Hypothetical protein FLJ30726
11. GEDCE: 2776, >IPI:IPI00332150.1|ENSEMBL:ENSP00000332692 Tax_Id=9606

12. CEGDE: 3266,
>IPI:IPI00173549.1|TREMBL:Q9UK89;Q9UMS6|REFSEQ_XP:XP_050219|ENSEMBL:ENSP00000306015 Tax_Id=9606 similar to Myopodin protein
13. EGCDE: 3368, >IPI:IPI00289489.1|SWISS-
PROT:O15230|REFSEQ_NP:NP_005551|TREMBL:O75079;Q8TDF8|ENSEMBL:ENSP00000252999
Tax_Id=9606 Laminin alpha-5 chain precursor
14. CEGED: 3828, >IPI:IPI00332170.1|ENSEMBL:ENSP00000332727 Tax_Id=9606
15. DCEGE: 3828, >IPI:IPI00332170.1|ENSEMBL:ENSP00000332727 Tax_Id=9606
16. DCEEG: 3936, >IPI:IPI00018298.3|SWISS-
PROT:P09913|REFSEQ_NP:NP_001538|TREMBL:Q8IZ03|ENSEMBL:ENSP00000238977
Tax_Id=9606 interferon-induced protein with tetratricopeptide repeats 2
17. GDECE: 3974, >IPI:IPI00329773.2|SWISS-
PROT:Q9NR19|REFSEQ_NP:NP_061147|TREMBL:Q9BYP4;Q96FY7;Q9BYP2;Q9H9U4;Q8N238|ENSEMBL:ENSP00000253382 Tax_Id=9606 Acetyl-coenzyme A synthetase, cytoplasmic
18. EGCED: 4522,
>IPI:IPI00215830.1|REFSEQ_NP:NP_001557|TREMBL:O15326|ENSEMBL:ENSP00000323547
Tax_Id=9606 Inositol polyphosphate 4-phosphatase type I-beta
19. EGCED: 4720,
>IPI:IPI00044388.1|REFSEQ_NP:NP_004018|TREMBL:Q96PE3;Q8TC02;Q13187|ENSEMBL:ENSP00000074304 Tax_Id=9606 Inositol polyphosphate 4-phosphatase type I alpha 3
20. EDEGC: 4906, >IPI:IPI00015931.1|SWISS-
PROT:P17658|REFSEQ_NP:NP_002226|ENSEMBL:ENSP00000280684 Tax_Id=9606 Potassium voltage-gated channel subfamily A member 6
21. DECGE: 4952, >IPI:IPI00215890.1|SWISS-
PROT:P17026|REFSEQ_NP:NP_008894|ENSEMBL:ENSP00000298299 Tax_Id=9606 zinc
finger protein 22 (KOX 15)
22. CGEED: 5108, >IPI:IPI00044600.2|SWISS-
PROT:Q96PQ0|REFSEQ_NP:NP_065828|ENSEMBL:ENSP00000329124 Tax_Id=9606 VPS10
domain-containing receptor SorCS2 precursor
23. GEEDC: 5112,
>IPI:IPI00289801.1|TREMBL:Q96Q02;Q9H6R2;Q96H77|ENSEMBL:ENSP00000320183;ENSP00000329529;ENSP00000329417 Tax_Id=9606 Hypothetical protein KIAA1885
24. EGEDC: 5124,
>IPI:IPI00140833.1|TREMBL:Q96Q04|REFSEQ_XP:XP_055866|ENSEMBL:ENSP00000270238
Tax_Id=9606 Hypothetical protein KIAA1883
25. ECEDG: 5240, >IPI:IPI00332253.1|ENSEMBL:ENSP00000332862;ENSP00000333000
Tax_Id=9606
26. CGEDE: 5334, >IPI:IPI00332264.1|TREMBL:Q8TBX6|ENSEMBL:ENSP00000253490
Tax_Id=9606 Hypothetical protein
27. CEDEG: 5346, >IPI:IPI00332270.1|ENSEMBL:ENSP00000332885 Tax_Id=9606

28. GEECD: 5366, >IPI:IPI00289829.1|SWISS-PROT:Q9UKF5-1|REFSEQ_NP:NP_055084|ENSEMBL:ENSP00000302171;ENSP00000330560 Tax_Id=9606 Splice isoform Alpha of Q9UKF5 ADAM 29 precursor
29. GEECD: 5368, >IPI:IPI00029112.1|SWISS-PROT:Q9UKF5-2|REFSEQ_NP:NP_068551 Tax_Id=9606 Splice isoform Beta of Q9UKF5 ADAM 29 precursor
30. GEECD: 5370, >IPI:IPI00029113.1|SWISS-PROT:Q9UKF5-3|REFSEQ_NP:NP_068552 Tax_Id=9606 Splice isoform Gamma of Q9UKF5 ADAM 29 precursor
31. CEDGE: 5984, >IPI:IPI00233595.1|REFSEQ_XP:XP_293565 Tax_Id=9606 similar to chromosome 11 open reading frame2
32. GEECD: 6554, >IPI:IPI00181360.2|TREMBL:Q96QP9 Tax_Id=9606 SDC-SIGN1B type II isoform
33. GEECD: 6576, >IPI:IPI00290006.1|TREMBL:Q96QQ1 Tax_Id=9606 MDC-SIGN1B type I isoform
34. GEECD: 6586, >IPI:IPI00045033.1|TREMBL:Q96QQ5|ENSEMBL:ENSP00000315407 Tax_Id=9606 SDC-SIGN1A type I isoform
35. GEECD: 6590, >IPI:IPI00045034.1|TREMBL:Q96QQ6 Tax_Id=9606 MDC-SIGN1A type IV isoform
36. GEECD: 6594, >IPI:IPI00290007.3|TREMBL:Q96QQ3;Q96QQ7|ENSEMBL:ENSP00000204801 Tax_Id=9606 MDC-SIGN1A type III isoform
37. CEEDG: 7190, >IPI:IPI00029778.1|SWISS-PROT:Q12888|REFSEQ_NP:NP_005648|ENSEMBL:ENSP00000263801 Tax_Id=9606 Tumor suppressor p53-binding protein 1
38. DEEGC: 7704, >IPI:IPI00234213.1|TREMBL:O75851|ENSEMBL:ENSP00000262089 Tax_Id=9606 WUGSC:H_DJ0751H13.1 protein
39. EDCGE: 7704, >IPI:IPI00234213.1|TREMBL:O75851|ENSEMBL:ENSP00000262089 Tax_Id=9606 WUGSC:H_DJ0751H13.1 protein
40. CGEED: 7754, >IPI:IPI00183001.2|REFSEQ_XP:XP_096330 Tax_Id=9606 hypothetical protein XP_096330
41. CDGEE: 7842, >IPI:IPI00005774.1|REFSEQ_NP:NP_004622|TREMBL:Q9BR78;Q14114|ENSEMBL:ENSP00000321958 Tax_Id=9606 Apolipoprotein E receptor 2 precursor
42. EDEGC: 8036, >IPI:IPI00170531.1|REFSEQ_NP:NP_114092|TREMBL:Q96RP8;Q9BYS4|ENSEMBL:ENSP00000221444 Tax_Id=9606 Voltage-gated potassium channel KCNA7
43. CGEED: 8192, >IPI:IPI00016859.2|SWISS-PROT:Q92994-1|REFSEQ_NP:NP_001510|ENSEMBL:ENSP00000329029 Tax_Id=9606 Splice isoform 1 of Q92994 Transcription factor IIIB 90 kDa subunit
44. CGEED: 8198, >IPI:IPI00157643.1|SWISS-PROT:Q92994-3|REFSEQ_NP:NP_663718 Tax_Id=9606 Splice isoform 3 of Q92994 Transcription factor IIIB 90 kDa subunit

45. DECGE: 8800, >IPI:IPI00028450.1|SWISS-PROT:P32418-1|REFSEQ_NP:NP_066920|ENSEMBL:ENSP00000332931 Tax_Id=9606 Splice isoform 1 of P32418 **Sodium/calcium** exchanger 1 precursor
46. DECGE: 8802, >IPI:IPI00216107.1|SWISS-PROT:P32418-2|TREMBL:Q9UD55;Q14913 Tax_Id=9606 Splice isoform 3 of P32418 **Sodium/calcium** exchanger 1 precursor
47. DECGE: 8808, >IPI:IPI00216108.1|SWISS-PROT:P32418-3 Tax_Id=9606 Splice isoform 7 of P32418 **Sodium/calcium** exchanger 1 precursor
48. DECGE: 8812, >IPI:IPI00216109.1|SWISS-PROT:P32418-4 Tax_Id=9606 Splice isoform 10 of P32418 **Sodium/calcium** exchanger 1 precursor
49. CEEGD: 9158, >IPI:IPI00290465.1|TREMBL:Q8TAN8 Tax_Id=9606 Dynactin 4
50. EGECD: 9324, >IPI:IPI00141177.1|REFSEQ_XP:XP_115639 Tax_Id=9606 similar to leukocyte immunoglobulin-like **receptor**, subfamily B (with TM and ITIM domains), member 6
51. CEDGE: 9356, >IPI:IPI00021537.2|SWISS-PROT:Q9NZT2-1|REFSEQ_NP:NP_031372|ENSEMBL:ENSP00000290291 Tax_Id=9606 Splice isoform 1 of Q9NZT2 Opioid growth factor **receptor**
52. CEDGE: 9358, >IPI:IPI00216130.1|SWISS-PROT:Q9NZT2-2 Tax_Id=9606 Splice isoform 2 of Q9NZT2 Opioid growth factor **receptor**
53. EDGE: 9416, >IPI:IPI00170891.1|REFSEQ_NP:NP_683702;NP_683703|TREMBL:Q8TAS8 Tax_Id=9606 Oxysterol binding protein-like 9
54. CGEED: 9420, >IPI:IPI00152108.1|REFSEQ_NP:NP_036300|TREMBL:Q8TB29|ENSEMBL:ENSP00000235299 Tax_Id=9606 F-box only protein 2
55. EDGE: 9498, >IPI:IPI00290550.1|REFSEQ_NP:NP_683705|TREMBL:Q96SK4 Tax_Id=9606 Hypothetical protein FLJ14801
56. GCEED: 9588, >IPI:IPI00178375.1|TREMBL:Q8TB50|ENSEMBL:ENSP00000313070 Tax_Id=9606 Similar to KIAA0433 protein
57. EEDGC: 9656, >IPI:IPI00014211.1|SWISS-PROT:Q07011|REFSEQ_NP:NP_001552|ENSEMBL:ENSP00000054670 Tax_Id=9606 Tumor necrosis factor **receptor** superfamily member 9 precursor
58. DCGEE: 10064, >IPI:IPI00216170.1|SWISS-PROT:P10159|REFSEQ_NP:NP_001961|ENSEMBL:ENSP00000254843 Tax_Id=9606 eukaryotic translation initiation factor 5A
59. ECGDE: 10516, >IPI:IPI00235181.1|REFSEQ_XP:XP_305828 Tax_Id=9606 hypothetical protein XP_305828
60. CEGED: 11724, >IPI:IPI00011836.1|SWISS-PROT:Q13107-1|REFSEQ_NP:NP_003354|ENSEMBL:ENSP00000265560 Tax_Id=9606 Splice isoform UNPEL of Q13107 Ubiquitin carboxyl-terminal hydrolase 4
61. CEGED: 11726, >IPI:IPI00216257.1|SWISS-PROT:Q13107-2 Tax_Id=9606 Splice isoform UNPES of Q13107 Ubiquitin carboxyl-terminal hydrolase 4

62. CEGED: 12024,
>IPI:IPI00102864.1|REFSEQ_NP:NP_000180|TREMBL:Q8WU87|ENSEMBL:ENSP00000290573
Tax_Id=9606 Hexokinase 2

63. DEGEC: 12572, >IPI:IPI00235759.1|REFSEQ_XP:XP_305957 Tax_Id=9606
similar to olfactory **receptor**

64. GDECE: 12766, >IPI:IPI00027107.3|SWISS-
PROT:P49411|REFSEQ_NP:NP_003312|ENSEMBL:ENSP00000322439 Tax_Id=9606 Tu
translation elongation factor, mitochondrial

65. ECDGE: 12864,
>IPI:IPI00046309.1|REFSEQ_XP:XP_066534|ENSEMBL:ENSP00000289280 Tax_Id=9606
similar to Diacylglycerol kinase, delta (Diglyceride kinase) (DGK-delta) (DAG
kinase delta) (130 kDa diacylglycerol kinase)

66. ECEGD: 13184,
>IPI:IPI00152462.1|REFSEQ_NP:NP_060009|TREMBL:O15437;Q9UEM5;O43326;Q9UG35;Q8T
D57;Q9UEM3;O00437|ENSEMBL:ENSP00000261383 Tax_Id=9606 Axonemal heavy chain
dynein type 3

67. EEGCD: 13620, >IPI:IPI00031015.1|SWISS-
PROT:Q14493|REFSEQ_NP:NP_006518|ENSEMBL:ENSP00000316490 Tax_Id=9606 Histone
RNA hairpin-binding protein

68. CEDGE: 13680, >IPI:IPI00178788.2|ENSEMBL:ENSP00000318933 Tax_Id=9606

69. DCGEE: 13680, >IPI:IPI00178788.2|ENSEMBL:ENSP00000318933 Tax_Id=9606

70. EDCGE: 13680, >IPI:IPI00178788.2|ENSEMBL:ENSP00000318933 Tax_Id=9606

71. EDGE: 13680, >IPI:IPI00178788.2|ENSEMBL:ENSP00000318933 Tax_Id=9606

72. ECEDG: 13890, >IPI:IPI00178829.1|ENSEMBL:ENSP00000276891 Tax_Id=9606

73. GEECD: 14396, >IPI:IPI00019173.2|SWISS-PROT:Q99965-
1|REFSEQ_NP:NP_001455|ENSEMBL:ENSP00000265708 Tax_Id=9606 Splice isoform 1 of
Q99965 **ADAM** 2 precursor

74. GEECD: 14398, >IPI:IPI00216374.1|SWISS-PROT:Q99965-2 Tax_Id=9606 Splice
isoform 2 of Q99965 **ADAM** 2 precursor

75. DEEGC: 15648, >IPI:IPI00178940.2|ENSEMBL:ENSP00000320248 Tax_Id=9606

76. EDEGC: 16138, >IPI:IPI00157767.1|TREMBL:Q8TEJ1 Tax_Id=9606 FLJ00206
protein

77. DCGEE: 16788,
>IPI:IPI00152847.1|REFSEQ_NP:NP_783165|TREMBL:Q8TEU8|ENSEMBL:ENSP00000311184
Tax_Id=9606 Multivalent protease inhibitor protein

78. EDCGE: 16788,
>IPI:IPI00152847.1|REFSEQ_NP:NP_783165|TREMBL:Q8TEU8|ENSEMBL:ENSP00000311184
Tax_Id=9606 Multivalent protease inhibitor protein

79. CEGED: 16872,
>IPI:IPI00304849.3|REFSEQ_NP:NP_079406|TREMBL:Q8WU37;Q96EH2|ENSEMBL:ENSP00000298648 Tax_Id=9606 hypothetical protein FLJ22761

80. DCEGE: 16872,
>IPI:IPI00304849.3|REFSEQ_NP:NP_079406|TREMBL:Q8WU37;Q96EH2|ENSEMBL:ENSP00000298648 Tax_Id=9606 hypothetical protein FLJ22761

81. EDCEG: 17896, >IPI:IPI00292059.1|SWISS-
PROT:P49790|REFSEQ_NP:NP_005115|ENSEMBL:ENSP00000262077 Tax_Id=9606 Nuclear pore complex protein Nup153

82. CEGED: 17902, >IPI:IPI00221325.2|SWISS-
PROT:P49792|REFSEQ_NP:NP_006258|TREMBL:Q13073;Q13074|ENSEMBL:ENSP00000283195; ENSP00000315836 Tax_Id=9606 Ran-binding protein 2

83. DCEGE: 17902, >IPI:IPI00221325.2|SWISS-
PROT:P49792|REFSEQ_NP:NP_006258|TREMBL:Q13073;Q13074|ENSEMBL:ENSP00000283195; ENSP00000315836 Tax_Id=9606 Ran-binding protein 2

84. GCEED: 18972, >IPI:IPI00237376.1|REFSEQ_XP:XP_295599 Tax_Id=9606
hypothetical protein XP_295599

85. CEGED: 19342,
>IPI:IPI00145406.3|TREMBL:O14715|REFSEQ_XP:XP_300391|ENSEMBL:ENSP00000306637
Tax_Id=9606 similar to RAN-binding protein 2-like 1 isoform 1

86. DCEGE: 19342,
>IPI:IPI00145406.3|TREMBL:O14715|REFSEQ_XP:XP_300391|ENSEMBL:ENSP00000306637
Tax_Id=9606 similar to RAN-binding protein 2-like 1 isoform 1

87. CEDGE: 19528, >IPI:IPI00332725.1|ENSEMBL:ENSP00000327776 Tax_Id=9606

88. DCGEE: 19528, >IPI:IPI00332725.1|ENSEMBL:ENSP00000327776 Tax_Id=9606

89. EDCGE: 19528, >IPI:IPI00332725.1|ENSEMBL:ENSP00000327776 Tax_Id=9606

90. EDGEC: 19528, >IPI:IPI00332725.1|ENSEMBL:ENSP00000327776 Tax_Id=9606

91. DEGEC: 20088, >IPI:IPI00297629.2|SWISS-
PROT:O76001|TREMBL:Q96R15|REFSEQ_XP:XP_212594;XP_305975|ENSEMBL:ENSP00000259884 Tax_Id=9606 similar to Olfactory **receptor** 2J3 (Olfactory **receptor** 6-6) (OR6-6) (Hs6M1-3)

92. GEECD: 20720, >IPI:IPI00069817.2|SWISS-PROT:Q9UIG0-1|REFSEQ_NP:NP_115784|ENSEMBL:ENSP00000265756 Tax_Id=9606 Splice isoform 1 of Q9UIG0 Bromodomain adjacent to **zinc** finger domain protein 1B

93. GEECD: 20722, >IPI:IPI00216695.1|SWISS-PROT:Q9UIG0-2|TREMBL:Q86UJ6
Tax_Id=9606 Splice isoform 2 of Q9UIG0 Bromodomain adjacent to **zinc** finger domain protein 1B

94. DGCEE: 20962,
>IPI:IPI00103925.1|TREMBL:Q8WZA9|REFSEQ_XP:XP_065026|ENSEMBL:ENSP00000300809
Tax_Id=9606 FKSG27

95. DECEG: 21696, >IPI:IPI00328113.2|SWISS-PROT:P35555|REFSEQ_NP:NP_000129|TREMBL:Q15972;Q9NP01|ENSEMBL:ENSP00000325527 Tax_Id=9606 Fibrillin 1 precursor

96. EDEGC: 21832, >IPI:IPI00216878.1|REFSEQ_NP:NP_079174|TREMBL:Q9H5Z2;Q8IV53;Q8NDB1|ENSEMBL:ENSP00000264083 Tax_Id=9606 Hypothetical protein FLJ22757

97. DGCEE: 22118, >IPI:IPI00238075.1|REFSEQ_XP:XP_295732 Tax_Id=9606 hypothetical protein XP_295732

98. EDGCE: 22232, >IPI:IPI00171453.1|SWISS-PROT:Q9NVP4-1|ENSEMBL:ENSP00000287356 Tax_Id=9606 Splice isoform 1 of Q9NVP4 Protein c20orf12

99. EDGCE: 22234, >IPI:IPI00216942.1|SWISS-PROT:Q9NVP4-2|REFSEQ_NP:NP_060622|ENSEMBL:ENSP00000262547 Tax_Id=9606 Splice isoform 2 of Q9NVP4 Protein c20orf12

100. DEECG: 22460, >IPI:IPI00216963.1|SWISS-PROT:O15519-9 Tax_Id=9606 Splice isoform 9 of O15519 CASP8 and FADD-like apoptosis regulator precursor

101. CEGED: 22538, >IPI:IPI00302502.2|TREMBL:Q9H5Y9|ENSEMBL:ENSP00000287067 Tax_Id=9606 Hypothetical protein FLJ22761

102. DCEGE: 22538, >IPI:IPI00302502.2|TREMBL:Q9H5Y9|ENSEMBL:ENSP00000287067 Tax_Id=9606 Hypothetical protein FLJ22761

103. EGEDC: 22590, >IPI:IPI00332867.1|ENSEMBL:ENSP00000329165 Tax_Id=9606

104. ECEDG: 22634, >IPI:IPI00292859.1|SWISS-PROT:P20023-1|REFSEQ_NP:NP_001868|ENSEMBL:ENSP00000326149 Tax_Id=9606 Splice isoform A of P20023 Complement receptor type 2 precursor

105. ECEDG: 22636, >IPI:IPI00216985.1|SWISS-PROT:P20023-2|TREMBL:Q9H2B3 Tax_Id=9606 Splice isoform B of P20023 Complement receptor type 2 precursor

106. ECEDG: 22638, >IPI:IPI00216986.1|SWISS-PROT:P20023-3 Tax_Id=9606 Splice isoform C of P20023 Complement receptor type 2 precursor

107. ECEDG: 22640, >IPI:IPI00216987.1|SWISS-PROT:P20023-4 Tax_Id=9606 Splice isoform D of P20023 Complement receptor type 2 precursor

108. CEGDE: 22700, >IPI:IPI00007956.1|REFSEQ_NP:NP_006463|TREMBL:Q9BXG9;Q9H3M7;Q16226|ENSEMBL:ENSP00000235941 Tax_Id=9606 Brain-expressed HHCPA78 homolog VDUP1

109. GEDCE: 22726, >IPI:IPI00332886.1|ENSEMBL:ENSP00000329193 Tax_Id=9606

110. CEDGE: 23008, >IPI:IPI00332906.1|ENSEMBL:ENSP00000327936 Tax_Id=9606

111. DCGEE: 23008, >IPI:IPI00332906.1|ENSEMBL:ENSP00000327936 Tax_Id=9606

112. EDGEC: 23008, >IPI:IPI00332906.1|ENSEMBL:ENSP00000327936 Tax_Id=9606

113. GDECE: 23330, >IPI:IPI00238420.1|REFSEQ_XP:XP_297070 Tax_Id=9606 hypothetical protein XP_297070

114. EDCEG: 23334,
 >IPI:IPI00292956.1|TREMBL:Q9NTD6;Q96AL1;Q9P2L9|REFSEQ_XP:XP_051146|ENSEMBL:EN
 SP00000040738 Tax_Id=9606 KIAA1327 protein

115. EEC DG: 23334,
 >IPI:IPI00292956.1|TREMBL:Q9NTD6;Q96AL1;Q9P2L9|REFSEQ_XP:XP_051146|ENSEMBL:EN
 SP00000040738 Tax_Id=9606 KIAA1327 protein

116. EDEGC: 23548,
 >IPI:IPI00157942.2|REFSEQ_XP:XP_170664|ENSEMBL:ENSP00000329798 Tax_Id=9606
 similar to pecanex-like 3

117. EGEDC: 23880, >IPI:IPI00217197.1|TREMBL:Q8IW93|ENSEMBL:ENSP00000270747
 Tax_Id=9606 Similar to hypothetical protein FLJ33962

118. GDCEE: 24742,
 >IPI:IPI00019004.1|REFSEQ_NP:NP_003253|TREMBL:Q99442|ENSEMBL:ENSP00000009363;
 ENSP00000310265 Tax_Id=9606 TRANSLOCATIONAL protein-1

119. ECDGE: 25188, >IPI:IPI00020557.1|SWISS-
 PROT:Q07954|REFSEQ_NP:NP_002323|TREMBL:Q86SW0|ENSEMBL:ENSP00000243077
 Tax_Id=9606 Low-density lipoprotein **receptor**-related protein 1 precursor

120. EDECG: 25296,
 >IPI:IPI00217435.1|REFSEQ_NP:NP_766638|TREMBL:Q8IWY4|ENSEMBL:ENSP00000290460
 Tax_Id=9606 Signal peptide-CUB-EGF-like domain containing protein 1

121. CEEGD: 25570, >IPI:IPI00003443.2|SWISS-PROT:Q16666-
 1|ENSEMBL:ENSP00000319280 Tax_Id=9606 Splice isoform 1 of Q16666 Gamma-
 interferon-inducible protein Ifi-16

122. CEEGD: 25572, >IPI:IPI00217474.1|SWISS-PROT:Q16666-
 2|REFSEQ_NP:NP_005522|TREMBL:Q96AJ5;Q8NEQ7|ENSEMBL:ENSP00000295808
 Tax_Id=9606 Splice isoform 2 of Q16666 Gamma-interferon-inducible protein
 Ifi-16

123. CEEGD: 25576, >IPI:IPI00217475.1|SWISS-PROT:Q16666-3 Tax_Id=9606 Splice
 isoform 3 of Q16666 Gamma-interferon-inducible protein Ifi-16

124. DEECG: 25998, >IPI:IPI00293293.1|SWISS-PROT:Q99523 Tax_Id=9606 Sortilin
 precursor

125. CEGED: 27810,
 >IPI:IPI00293568.1|REFSEQ_NP:NP_005045|TREMBL:Q99666|ENSEMBL:ENSP00000016946;
 ENSP00000330842 Tax_Id=9606 Sperm membrane protein BS-63

126. DCEGE: 27810,
 >IPI:IPI00293568.1|REFSEQ_NP:NP_005045|TREMBL:Q99666|ENSEMBL:ENSP00000016946;
 ENSP00000330842 Tax_Id=9606 Sperm membrane protein BS-63

127. EEGDC: 27922, >IPI:IPI00333139.1|SWISS-
 PROT:Q99683|REFSEQ_NP:NP_005914|ENSEMBL:ENSP00000265606 Tax_Id=9606 Mitogen-
 activated protein kinase kinase kinase 5

128. EGDCE: 27922, >IPI:IPI00333139.1|SWISS-
 PROT:Q99683|REFSEQ_NP:NP_005914|ENSEMBL:ENSP00000265606 Tax_Id=9606 Mitogen-
 activated protein kinase kinase kinase 5

129. GEECD: 28000,
 >IPI:IPI00333140.1|REFSEQ_NP:NP_620711|TREMBL:Q8IYT0;Q9UDM2;Q9NTF1;Q8TB42;Q8NFT8|ENSEMBL:ENSP00000309867 Tax_Id=9606 Similar to delta-notch-like EGF repeat-containing transmembrane

130. DEECG: 28068,
 >IPI:IPI00217882.1|REFSEQ_NP:NP_002950|TREMBL:Q8IZ49|ENSEMBL:ENSP00000256637 Tax_Id=9606 Sortilin 1

131. DCGEE: 28478,
 >IPI:IPI00239974.1|REFSEQ_XP:XP_290186|ENSEMBL:ENSP00000329807 Tax_Id=9606 similar to eukaryotic initiation factor 5A

132. ECGED: 28644, >IPI:IPI00031422.3|SWISS-PROT:Q14524|REFSEQ_NP:NP_000326|TREMBL:Q8WWN5;Q8IZC9;Q8WTQ6;Q96J69;Q86UR3;Q8WTS0|ENSEMBL:ENSP00000328968 Tax_Id=9606 Cardiac **sodium** channel alpha subunit Nav1.5

133. DCGEE: 29618,
 >IPI:IPI00218084.2|REFSEQ_XP:XP_084467|ENSEMBL:ENSP00000331000 Tax_Id=9606 similar to eukaryotic initiation factor 5A

134. CEDGE: 31564, >IPI:IPI00022608.1|SWISS-PROT:Q92673|REFSEQ_NP:NP_003096|ENSEMBL:ENSP00000260197 Tax_Id=9606 Sortilin-related **receptor** precursor

135. ECEGD: 31666,
 >IPI:IPI00240961.1|REFSEQ_XP:XP_302387|ENSEMBL:ENSP00000333778 Tax_Id=9606 similar to Multifunctional protein ADE2

136. GDECE: 33070,
 >IPI:IPI00294630.1|REFSEQ_NP:NP_644803|ENSEMBL:ENSP00000321387 Tax_Id=9606 acetyl-CoA synthetase 2 isoform b

137. DGECE: 33506,
 >IPI:IPI00163901.1|TREMBL:Q9Y3V7;Q8IUI0;Q8IUI1|ENSEMBL:ENSP00000295761 Tax_Id=9606 Hypothetical protein

138. GECED: 33506,
 >IPI:IPI00163901.1|TREMBL:Q9Y3V7;Q8IUI0;Q8IUI1|ENSEMBL:ENSP00000295761 Tax_Id=9606 Hypothetical protein

139. ECDEG: 33580,
 >IPI:IPI00028987.1|REFSEQ_NP:NP_068506|TREMBL:O95425;Q9H1R7;O60611|ENSEMBL:ENSP00000263057 Tax_Id=9606 Archvillin

140. CEDGE: 33702, >IPI:IPI00333400.1|ENSEMBL:ENSP00000329881 Tax_Id=9606

141. CDGEE: 34036, >IPI:IPI00241624.1|REFSEQ_XP:XP_297753 Tax_Id=9606 hypothetical protein XP_297753

142. ECEGD: 34356, >IPI:IPI00294839.1|SWISS-PROT:Q9Y4K0|REFSEQ_NP:NP_002309|ENSEMBL:ENSP00000256397 Tax_Id=9606 Lysyl oxidase homolog 2 precursor

143. CDEGE: 34614, >IPI:IPI00241780.1|REFSEQ_XP:XP_302541 Tax_Id=9606 similar to meningioma-expressed antigen 11

144. EEGCD: 34738, >IPI:IPI00333423.1|ENSEMBL:ENSP00000329913 Tax_Id=9606

145. DCEGE: 34770, >IPI:IPI00011227.1|SWISS-
 PROT:P21918|REFSEQ_NP:NP_000789|TREMBL:Q8NEQ8|ENSEMBL:ENSP00000306129
 Tax_Id=9606 D(1B) dopamine **receptor**

146. DCGEE: 34788, >IPI:IPI00020083.1|SWISS-PROT:Q15878-
 1|TREMBL:Q9NY05;Q9UN68;Q9NYZ6|ENSEMBL:ENSP00000252150;ENSP00000252151
 Tax_Id=9606 Splice isoform Alpha-1E-3 of Q15878 Voltage-dependent R-type
calcium channel alpha-1E subunit

147. DCGEE: 34794, >IPI:IPI00218338.1|SWISS-PROT:Q15878-
 2|REFSEQ_NP:NP_000712|ENSEMBL:ENSP00000308642 Tax_Id=9606 Splice isoform
 Alpha-1E-1 of Q15878 Voltage-dependent R-type **calcium** channel alpha-1E
 subunit

148. DECGE: 35582, >IPI:IPI00004957.1|SWISS-
 PROT:Q9Y5C1|REFSEQ_NP:NP_055310|ENSEMBL:ENSP00000255208 Tax_Id=9606
 Angiopoietin-related protein 3 precursor

149. EDGCE: 35928, >IPI:IPI00002493.1|TREMBL:Q9Y5J4|ENSEMBL:ENSP00000321781
 Tax_Id=9606 Pyrroline 5-carboxylate reductase isoform

150. ECEGD: 37020, >IPI:IPI00242598.1|REFSEQ_XP:XP_299197 Tax_Id=9606
 hypothetical protein XP_299197

151. EDGE: 37310, >IPI:IPI00077853.1|SWISS-PROT:Q96SU4-
 1|REFSEQ_NP:NP_078862|ENSEMBL:ENSP00000303944 Tax_Id=9606 Splice isoform 1 of
 Q96SU4 Oxysterol binding protein-related protein 9

152. EDGE: 37314, >IPI:IPI00218449.1|SWISS-PROT:Q96SU4-
 2|REFSEQ_NP:NP_683706 Tax_Id=9606 Splice isoform 2 of Q96SU4 Oxysterol
 binding protein-related protein 9

153. ECEDG: 37612, >IPI:IPI00016698.1|SWISS-PROT:Q9UEU5|REFSEQ_NP:NP_036328
 Tax_Id=9606 GAGE-8 protein

154. GEDCE: 37860, >IPI:IPI00021968.1|SWISS-
 PROT:Q9Y6Q6|REFSEQ_NP:NP_003830|ENSEMBL:ENSP00000269485 Tax_Id=9606 Tumor
 necrosis factor **receptor** superfamily member 11A precursor

155. GDCEE: 37890,
 >IPI:IPI00098997.1|REFSEQ_NP:NP_003750|TREMBL:O15153;Q9Y6R1;Q9H262;Q9UIC0;Q9U
 IC1|ENSEMBL:ENSP00000264485 Tax_Id=9606 Pancreas **sodium** bicarbonate
 cotransporter

156. GDCEE: 37894, >IPI:IPI00002561.1|TREMBL:Q9Y6R3 Tax_Id=9606 Electrogenic
Na⁺ bicarbonate cotransporter

157. CGDEE: 38394,
 >IPI:IPI00069309.1|REFSEQ_NP:NP_690852|TREMBL:Q8N0T9;Q8WV43;Q96GJ2;Q9UFC0|ENS
 EMBL:ENSP00000292616 Tax_Id=9606 Hypothetical protein

158. EDCGE: 38398, >IPI:IPI00004623.1|TREMBL:Q9UFC1|ENSEMBL:ENSP00000307039
 Tax_Id=9606 Hypothetical protein

159. EDCEG: 38940, >IPI:IPI00243356.1|REFSEQ_XP:XP_304057 Tax_Id=9606
 hypothetical protein XP_304057

160. GEDCE: 38940, >IPI:IPI00243356.1|REFSEQ_XP:XP_304057 Tax_Id=9606
hypothetical protein XP_304057

161. GEEDC: 39992, >IPI:IPI00104867.1|ENSEMBL:ENSP00000301357 Tax_Id=9606

162. CDEEG: 40410, >IPI:IPI00159268.1|REFSEQ_XP:XP_172950 Tax_Id=9606
hypothetical protein XP_172950

163. EDEGC: 40844, >IPI:IPI00243959.1|REFSEQ_XP:XP_292142 Tax_Id=9606
similar to bromodomain containing 7

164. EDCEG: 40916, >IPI:IPI00243988.1|REFSEQ_XP:XP_304157 Tax_Id=9606
hypothetical protein XP_304157

165. EGDCE: 41000, >IPI:IPI00002284.1|SWISS-
PROT:Q9UGP5|REFSEQ_NP:NP_037406|TREMBL:Q9HAJ3|ENSEMBL:ENSP00000299206
Tax_Id=9606 DNA polymerase lambda

166. CEEGD: 41850, >IPI:IPI00244195.1|REFSEQ_XP:XP_299401 Tax_Id=9606
hypothetical protein XP_299401

167. CEDGE: 42152, >IPI:IPI00025276.1|SWISS-PROT:P22105-
1|REFSEQ_NP:NP_061978|TREMBL:Q9UC13;Q9UC12;Q9UC11;Q8N4R1;Q9UE34;Q9NPK7;O95681
;O95682;Q9Y464|ENSEMBL:ENSP00000211407;ENSP00000299669;ENSP00000329801
Tax_Id=9606 Splice isoform XB of P22105 Tenascin-X precursor

168. DCGEE: 42152, >IPI:IPI00025276.1|SWISS-PROT:P22105-
1|REFSEQ_NP:NP_061978|TREMBL:Q9UC13;Q9UC12;Q9UC11;Q8N4R1;Q9UE34;Q9NPK7;O95681
;O95682;Q9Y464|ENSEMBL:ENSP00000211407;ENSP00000299669;ENSP00000329801
Tax_Id=9606 Splice isoform XB of P22105 Tenascin-X precursor

169. EDCGE: 42152, >IPI:IPI00025276.1|SWISS-PROT:P22105-
1|REFSEQ_NP:NP_061978|TREMBL:Q9UC13;Q9UC12;Q9UC11;Q8N4R1;Q9UE34;Q9NPK7;O95681
;O95682;Q9Y464|ENSEMBL:ENSP00000211407;ENSP00000299669;ENSP00000329801
Tax_Id=9606 Splice isoform XB of P22105 Tenascin-X precursor

170. EDGE C: 42152, >IPI:IPI00025276.1|SWISS-PROT:P22105-
1|REFSEQ_NP:NP_061978|TREMBL:Q9UC13;Q9UC12;Q9UC11;Q8N4R1;Q9UE34;Q9NPK7;O95681
;O95682;Q9Y464|ENSEMBL:ENSP00000211407;ENSP00000299669;ENSP00000329801
Tax_Id=9606 Splice isoform XB of P22105 Tenascin-X precursor

171. DCGEE: 42156, >IPI:IPI00218639.1|SWISS-PROT:P22105-
2|REFSEQ_NP:NP_115859|ENSEMBL:ENSP00000333864;ENSP00000330575 Tax_Id=9606
Splice isoform XB-short of P22105 Tenascin-X precursor

172. DECGE: 42464,
>IPI:IPI00328412.1|REFSEQ_NP:NP_115823|TREMBL:Q86SJ5|ENSEMBL:ENSP00000270509
Tax_Id=9606 Fibrillin-3 short form precursor transcript variant 1

173. EDECG: 42464,
>IPI:IPI00328412.1|REFSEQ_NP:NP_115823|TREMBL:Q86SJ5|ENSEMBL:ENSP00000270509
Tax_Id=9606 Fibrillin-3 short form precursor transcript variant 1

174. GEECD: 43964, >IPI:IPI00079482.1|SWISS-PROT:Q9BZ11-
1|REFSEQ_NP:NP_079496|TREMBL:Q8N0W6;Q8N6B9|ENSEMBL:ENSP00000278788
Tax_Id=9606 Splice isoform 1 of Q9BZ11 ADAM 33 precursor

175. GEECD: 43974, >IPI:IPI00218715.1|SWISS-PROT:Q9BZ11-2|REFSEQ NP:NP_694882|ENSEMBL:ENSP00000322550 Tax_Id=9606 Splice isoform 2 of Q9BZ11 ADAM 33 precursor

176. GEECD: 44974, >IPI:IPI00181689.1|SWISS-PROT:O43184-2|REFSEQ NP:NP_067673|ENSEMBL:ENSP00000310004 Tax_Id=9606 Splice isoform 12S of O43184 ADAM 12 precursor

177. EEGDC: 45106, >IPI:IPI00245008.1|REFSEQ_XP:XP_304348 Tax_Id=9606 hypothetical protein XP_304348

178. EGCDE: 45166, >IPI:IPI00245026.1|REFSEQ_XP:XP_292354 Tax_Id=9606 similar to prohibitin

179. EEGCD: 45344, >IPI:IPI00333835.1|ENSEMBL:ENSP00000308853 Tax_Id=9606

180. GDCEE: 45448, >IPI:IPI00166570.2|TREMBL:Q8N3L3;Q8N3S2;Q86T52|ENSEMBL:ENSP00000321883 Tax_Id=9606 Hypothetical protein DKFZp451F022

181. EGDEC: 45712, >IPI:IPI00166602.1|TREMBL:Q8N3R5;Q8N1M9 Tax_Id=9606 Hypothetical protein

182. DCEEG: 45754, >IPI:IPI00296542.1|SWISS-PROT:P16581|REFSEQ NP:NP_000441|ENSEMBL:ENSP00000066315 Tax_Id=9606 E-selectin precursor

183. CDEGE: 46368, >IPI:IPI00181793.1|SWISS-PROT:P10911|REFSEQ NP:NP_005360|TREMBL:Q8IUF4;Q9UJB3;Q8IUF3|ENSEMBL:ENSP00000218094 Tax_Id=9606 Hypothetical protein

184. DEGEC: 46368, >IPI:IPI00181793.1|SWISS-PROT:P10911|REFSEQ NP:NP_005360|TREMBL:Q8IUF4;Q9UJB3;Q8IUF3|ENSEMBL:ENSP00000218094 Tax_Id=9606 Hypothetical protein

185. CDGEE: 46970, >IPI:IPI00328785.1|TREMBL:Q86V27 Tax_Id=9606 Similar to low density lipoprotein receptor-related protein 8, apolipoprotein e receptor

186. CEDEG: 47272, >IPI:IPI00166717.1|TREMBL:Q8N4K6 Tax_Id=9606 Similar to chromosome 11 hypothetical protein ORF4

187. EDEGC: 47272, >IPI:IPI00166717.1|TREMBL:Q8N4K6 Tax_Id=9606 Similar to chromosome 11 hypothetical protein ORF4

188. CEEDG: 47288, >IPI:IPI00245636.1|REFSEQ_XP:XP_292482|ENSEMBL:ENSP00000333450 Tax_Id=9606 similar to U3 small nucleolar ribonucleoprotein protein MPP10 (M phase phosphoprotein 10)

189. CGEED: 47416, >IPI:IPI00007087.1|SWISS-PROT:Q9UK22 Tax_Id=9606 F-box only protein 2

190. CEEGD: 47622, >IPI:IPI00008210.1|REFSEQ NP:NP_057305|TREMBL:Q9NSJ5;Q9UJW0|ENSEMBL:ENSP00000255263 Tax_Id=9606 Dynactin P62 subunit

191. ECEDG: 47948,
 >IPI:IPI00166789.1|REFSEQ_NP:NP_690875|TREMBL:Q8NCX3;Q8N555;Q86WP9|ENSEMBL:ENSP00000278060 Tax_Id=9606 Similar to chromosome 20 open reading frame 16

192. EGEDC: 48062,
 >IPI:IPI00296830.1|TREMBL:Q8N4X3|REFSEQ_XP:XP_290932|ENSEMBL:ENSP00000303758 Tax_Id=9606 Similar to FLJ00226 protein

193. CGEDE: 49572,
 >IPI:IPI00002545.1|REFSEQ_NP:NP_037496|TREMBL:Q9H0A4;Q9UL41 Tax_Id=9606 Paraneoplastic neuronal antigen MA3

194. EDCGE: 49572,
 >IPI:IPI00002545.1|REFSEQ_NP:NP_037496|TREMBL:Q9H0A4;Q9UL41 Tax_Id=9606 Paraneoplastic neuronal antigen MA3

195. GCEED: 49892, >IPI:IPI00297089.1|SWISS-PROT:Q13023|REFSEQ_NP:NP_004265|ENSEMBL:ENSP00000280979 Tax_Id=9606 A-kinase anchor protein 6

196. ECEDG: 50158, >IPI:IPI00011526.1|SWISS-PROT:Q13065|REFSEQ_NP:NP_001459|TREMBL:Q8IYC5|ENSEMBL:ENSP00000217878 Tax_Id=9606 GAGE-1 protein

197. ECEDG: 50160, >IPI:IPI00011527.1|SWISS-PROT:Q13066|REFSEQ_NP:NP_001463|ENSEMBL:ENSP00000327927 Tax_Id=9606 GAGE-2 protein

198. ECEDG: 50166, >IPI:IPI00011529.1|SWISS-PROT:Q13067 Tax_Id=9606 GAGE-3 protein

199. ECEDG: 50176, >IPI:IPI00011530.1|SWISS-PROT:Q13068|REFSEQ_NP:NP_001465|ENSEMBL:ENSP00000309195;ENSP00000331882;ENSP00000333538 Tax_Id=9606 GAGE-4 protein

200. ECEDG: 50180, >IPI:IPI00011531.1|SWISS-PROT:Q13069|REFSEQ_NP:NP_001466 Tax_Id=9606 GAGE-5 protein

201. ECEDG: 50232, >IPI:IPI00011545.1|SWISS-PROT:Q13070|REFSEQ_NP:NP_001467 Tax_Id=9606 GAGE-6 protein

202. DGEEC: 50486, >IPI:IPI00246380.1|REFSEQ_XP:XP_299867 Tax_Id=9606 hypothetical protein XP_299867

203. EDEGC: 50594,
 >IPI:IPI00329085.1|REFSEQ_NP:NP_115582|TREMBL:Q8NF42;Q86WI3;Q8TEE2;Q969L7|ENSEMBL:ENSP00000262510;ENSP00000308886 Tax_Id=9606 NOD27

204. DCEEG: 50676,
 >IPI:IPI00166972.1|TREMBL:Q8IY05;Q9ULD9;Q9UFL4;Q9Y5A1|REFSEQ_XP:XP_114432|ENSEMBL:ENSP00000307746 Tax_Id=9606 KIAA1281 protein

205. CEEGD: 50882,
 >IPI:IPI00297250.1|TREMBL:O60290|REFSEQ_XP:XP_044213|ENSEMBL:ENSP00000223210 Tax_Id=9606 Hypothetical protein KIAA0543

206. CEEDG: 51488,
 >IPI:IPI00329142.1|TREMBL:Q86X53;Q9P063|REFSEQ_XP:XP_291282|ENSEMBL:ENSP00000262109 Tax_Id=9606 Hypothetical protein

207. EDEGC: 51612, >IPI:IPI00014186.2|SWISS-PROT:Q15911-1|REFSEQ_NP:NP_008816|TREMBL:Q8N2Y6|ENSEMBL:ENSP00000268489 Tax_Id=9606 Splice isoform A of Q15911 Alpha-fetoprotein enhancer binding protein

208. DECEG: 51624, >IPI:IPI00002657.1|SWISS-PROT:Q9UBL6-1|REFSEQ_NP:NP_055242|ENSEMBL:ENSP00000317374 Tax_Id=9606 Splice isoform 1 of Q9UBL6 Copine VII

209. DECEG: 51628, >IPI:IPI00219004.1|SWISS-PROT:Q9UBL6-2|REFSEQ_NP:NP_705900|ENSEMBL:ENSP00000268720 Tax_Id=9606 Splice isoform 2 of Q9UBL6 Copine VII

210. GEDCE: 51754, >IPI:IPI00334146.1|ENSEMBL:ENSP00000333231 Tax_Id=9606

211. EEGCD: 52252,
 >IPI:IPI00167074.1|REFSEQ_NP:NP_689735|TREMBL:Q8N6S5|ENSEMBL:ENSP00000315357 Tax_Id=9606 Similar to putative

212. EGCED: 52548,
 >IPI:IPI00329675.4|REFSEQ_NP:NP_777603|TREMBL:Q8N769|ENSEMBL:ENSP00000323279 Tax_Id=9606 Hypothetical protein FLJ25976

213. EEDGC: 52708, >IPI:IPI00246930.1|REFSEQ_XP:XP_299935 Tax_Id=9606 hypothetical protein XP_299935

214. GCEDE: 52936,
 >IPI:IPI00007325.1|REFSEQ_NP:NP_006327|TREMBL:Q9BV66;O00156|ENSEMBL:ENSP00000291900 Tax_Id=9606 ZYG homologue

215. GEECD: 53132, >IPI:IPI00220973.3|SWISS-PROT:Q9Y215-5|REFSEQ_NP:NP_536802|ENSEMBL:ENSP00000324883 Tax_Id=9606 Splice isoform V of Q9Y215 Acetylcholinesterase collagenic tail peptide precursor

216. EGEDC: 53194, >IPI:IPI00008692.1|SWISS-PROT:O76013|REFSEQ_NP:NP_003762|TREMBL:Q86XG4|ENSEMBL:ENSP00000329272 Tax_Id=9606 Keratin, type I cuticular HA6

217. GEECD: 53206, >IPI:IPI00329242.1|TREMBL:Q86XK9 Tax_Id=9606 Hypothetical protein

218. DGEEC: 53346,
 >IPI:IPI00329260.1|REFSEQ_NP:NP_733837;NP_079414|TREMBL:Q8N3P1;Q9H9M1;Q86XN7;Q8N3D2|ENSEMBL:ENSP00000239877;ENSP00000332034 Tax_Id=9606 KIAA2032 protein

219. EDGCE: 53454, >IPI:IPI00022561.1|SWISS-PROT:O76064|REFSEQ_NP:NP_003949|ENSEMBL:ENSP00000229866 Tax_Id=9606 RING finger protein 8

220. ECEDG: 53628, >IPI:IPI00008809.1|SWISS-PROT:O76087|REFSEQ_NP:NP_001468;NP_066946|ENSEMBL:ENSP00000329716;ENSP00000331424;ENSP00000331056 Tax_Id=9606 GAGE-7 protein

221. ECEDG: 53686, >IPI:IPI00013908.1|SWISS-PROT:P25391|REFSEQ_XP:XP_209080|ENSEMBL:ENSP00000332581 Tax_Id=9606 Laminin alpha-1 chain precursor

222. GCDEE: 53784, >IPI:IPI00219249.2|SWISS-PROT:P78357|REFSEQ_NP:NP_003623|ENSEMBL:ENSP00000264638 Tax_Id=9606 Contactin associated protein 1 precursor

223. EDGE: 54034, >IPI:IPI00247213.1|REFSEQ_XP:XP_292770 Tax_Id=9606 similar to Seminal plasma protein HSP-1

224. CEDGE: 54144, >IPI:IPI00247236.1|REFSEQ_XP:XP_292781 Tax_Id=9606 similar to alpha tectorin

225. GEECD: 54392, >IPI:IPI00013897.1|SWISS-PROT:O14672|REFSEQ_NP:NP_001101|ENSEMBL:ENSP00000260408 Tax_Id=9606 ADAM 10 precursor

226. CEDGE: 54624, >IPI:IPI00334240.1|ENSEMBL:ENSP00000333382 Tax_Id=9606

227. DCGEE: 54624, >IPI:IPI00334240.1|ENSEMBL:ENSP00000333382 Tax_Id=9606

228. EDCGE: 54624, >IPI:IPI00334240.1|ENSEMBL:ENSP00000333382 Tax_Id=9606

229. EDGE: 54624, >IPI:IPI00334240.1|ENSEMBL:ENSP00000333382 Tax_Id=9606

230. GECED: 54664, >IPI:IPI00012269.1|SWISS-PROT:Q13201|REFSEQ_NP:NP_031377|ENSEMBL:ENSP00000264790 Tax_Id=9606 Endothelial cell multimerin precursor

231. CEDGE: 55122, >IPI:IPI00297990.1|TREMBL:Q8N7X6|ENSEMBL:ENSP00000311258 Tax_Id=9606 Hypothetical protein FLJ40237

232. ECGED: 55226, >IPI:IPI00028828.1|SWISS-PROT:O95125-1|REFSEQ_NP:NP_003446|TREMBL:Q9NSM4|ENSEMBL:ENSP00000299336;ENSP00000325480 Tax_Id=9606 Splice isoform Beta of O95125 Zinc finger protein 202

233. EEDCG: 55226, >IPI:IPI00028828.1|SWISS-PROT:O95125-1|REFSEQ_NP:NP_003446|TREMBL:Q9NSM4|ENSEMBL:ENSP00000299336;ENSP00000325480 Tax_Id=9606 Splice isoform Beta of O95125 Zinc finger protein 202

234. ECGED: 55228, >IPI:IPI00219137.1|SWISS-PROT:O95125-2|TREMBL:Q9Y5A5 Tax_Id=9606 Splice isoform Alpha of O95125 Zinc finger protein 202

235. EEDCG: 55228, >IPI:IPI00219137.1|SWISS-PROT:O95125-2|TREMBL:Q9Y5A5 Tax_Id=9606 Splice isoform Alpha of O95125 Zinc finger protein 202

236. EEDCG: 55450, >IPI:IPI00247543.1|REFSEQ_NP:NP_055114|TREMBL:O60433|ENSEMBL:ENSP00000304499 Tax_Id=9606 R31546_1

237. GEECD: 55450, >IPI:IPI00247543.1|REFSEQ_NP:NP_055114|TREMBL:O60433|ENSEMBL:ENSP00000304499 Tax_Id=9606 R31546_1

238. EDCEG: 56090, >IPI:IPI00175989.4|REFSEQ_NP:NP_055893|TREMBL:Q8N318;O94942;Q86YR7|ENSEMBL:EN

SP00000265597;ENSP00000328118 Tax_Id=9606 Rho family guanine-nucleotide exchange factor

239. CEEGD: 56236,
>IPI:IPI00334281.1|REFSEQ_NP:NP_861452|ENSEMBL:ENSP00000286680 Tax_Id=9606
hypothetical protein LOC286148

240. EEDGC: 56650,
>IPI:IPI00182585.1|REFSEQ_NP:NP_003911|TREMBL:Q9UNS1;Q86VM1;Q8IWH3|ENSEMBL:EN
SP00000229201 Tax_Id=9606 Timeless homolog

241. CDGEE: 56846, >IPI:IPI00167525.1|TREMBL:Q8N8P8 Tax_Id=9606 Hypothetical
protein FLJ39054

242. ECEDG: 56910,
>IPI:IPI00182635.2|ENSEMBL:ENSP00000319044;ENSP00000319050 Tax_Id=9606

243. CGDEE: 57160, >IPI:IPI00012759.1|SWISS-
PROT:Q13329|REFSEQ_NP:NP_006641|ENSEMBL:ENSP00000274620 Tax_Id=9606 Complexin
2

244. CEDGE: 57472,
>IPI:IPI00175361.2|REFSEQ_XP:XP_209869|ENSEMBL:ENSP00000333544 Tax_Id=9606
hypothetical protein XP_209869

245. DCEGE: 57918,
>IPI:IPI00182722.1|REFSEQ_NP:NP_004839|TREMBL:O60560|ENSEMBL:ENSP00000329862
Tax_Id=9606 ICB-1

246. CEEGD: 58208, >IPI:IPI00298524.1|TREMBL:Q8N9E5 Tax_Id=9606 Hypothetical
protein FLJ37649

247. DCEEG: 58828, >IPI:IPI00024254.1|SWISS-
PROT:O14879|REFSEQ_NP:NP_001540|ENSEMBL:ENSP00000238972 Tax_Id=9606
Interferon-induced protein with tetratricopeptide repeats 4

248. DCEEG: 58842, >IPI:IPI00018300.1|SWISS-
PROT:P09914|REFSEQ_NP:NP_001539|ENSEMBL:ENSP00000328042 Tax_Id=9606
Interferon-induced protein with tetratricopeptide repeats 1

249. GDCEE: 58904, >IPI:IPI00298624.1|TREMBL:Q9UP50 Tax_Id=9606 **Sodium**
bicarbonate cotransporter

250. EDCEG: 58942, >IPI:IPI00001805.3|TREMBL:Q9P281|ENSEMBL:ENSP00000303486
Tax_Id=9606 Hypothetical protein KIAA1447

251. EEDCG: 58942, >IPI:IPI00001805.3|TREMBL:Q9P281|ENSEMBL:ENSP00000303486
Tax_Id=9606 Hypothetical protein KIAA1447

252. DEEGC: 58978,
>IPI:IPI00054595.1|REFSEQ_NP:NP_002326|TREMBL:Q9UP66;Q96TD6;Q9UES7|ENSEMBL:EN
SP00000294304 Tax_Id=9606 Low-density lipoprotein **receptor**-related protein 5

253. CEGED: 59064,
>IPI:IPI00183739.1|TREMBL:Q8N9R2;Q8NAA7;Q8NCM5|ENSEMBL:ENSP00000319909
Tax_Id=9606 Hypothetical protein FLJ36696

254. CEEGD: 59148, >IPI:IPI00334393.1|REFSEQ_XP:XP_209917 Tax_Id=9606 similar to hypothetical protein FLJ32949

255. GDECE: 59304, >IPI:IPI00167814.1|TREMBL:Q8N9U3 Tax_Id=9606 Hypothetical protein FLJ36512

256. GEECD: 59348, >IPI:IPI00021905.1|SWISS-PROT:Q13443|REFSEQ_NP:NP_003807|TREMBL:Q8NFM6|ENSEMBL:ENSP00000305538 Tax_Id=9606 ADAM 9 precursor

257. EGCDE: 59580, >IPI:IPI00298758.1|SWISS-PROT:O60602|REFSEQ_NP:NP_003259 Tax_Id=9606 Toll-like receptor 5 precursor

258. GCDEE: 59580, >IPI:IPI00298758.1|SWISS-PROT:O60602|REFSEQ_NP:NP_003259 Tax_Id=9606 Toll-like receptor 5 precursor

259. ECDEG: 59660, >IPI:IPI00018370.1|REFSEQ_NP:NP_003165|TREMBL:O60612|ENSEMBL:ENSP00000263058 Tax_Id=9606 Supervillin

260. CDGEE: 60296, >IPI:IPI00020929.1|REFSEQ_NP:NP_150643|TREMBL:O14968|ENSEMBL:ENSP00000321568 Tax_Id=9606 ApoER2delta4-7

261. ECEDG: 60306, >IPI:IPI00024273.1|SWISS-PROT:P98155-1|REFSEQ_NP:NP_003374|ENSEMBL:ENSP00000327160 Tax_Id=9606 Splice isoform Long of P98155 Very low-density lipoprotein receptor precursor

262. ECEDG: 60308, >IPI:IPI00219353.1|SWISS-PROT:P98155-2 Tax_Id=9606 Splice isoform Short of P98155 Very low-density lipoprotein receptor precursor

263. EEGDC: 60386, >IPI:IPI00004358.2|SWISS-PROT:P11216|REFSEQ_NP:NP_002853|TREMBL:Q8TDG6|ENSEMBL:ENSP00000216962 Tax_Id=9606 Glycogen phosphorylase, brain form

264. EEGDC: 60398, >IPI:IPI00023177.1|SWISS-PROT:Q13111-1|REFSEQ_NP:NP_005474|ENSEMBL:ENSP00000301280 Tax_Id=9606 Splice isoform 1 of Q13111 Chromatin assembly factor 1 subunit A

265. EDEGC: 60868, >IPI:IPI00179185.1|REFSEQ_NP:NP_003643|TREMBL:O00520;Q9BRA7|ENSEMBL:ENSP00000315074 Tax_Id=9606 Carboxypeptidase Z precursor

266. ECEGD: 60924, >IPI:IPI00248855.1|REFSEQ_XP:XP_294313 Tax_Id=9606 similar to Multifunctional protein ADE2

267. GEEDC: 61238, >IPI:IPI00028136.1|REFSEQ_NP:NP_066978|TREMBL:Q96QQ4;Q96QQ0;Q9NNX6;Q96QQ8|ENSEMBL:ENSP00000315477 Tax_Id=9606 Membrane-associated lectin type-C

268. ECGED: 61396, >IPI:IPI00000151.1|SWISS-PROT:P18564|REFSEQ_NP:NP_000879|ENSEMBL:ENSP00000283249 Tax_Id=9606 Integrin beta-6 precursor

269. ECEDG: 61406, >IPI:IPI00010746.1|SWISS-PROT:P48651|REFSEQ_NP:NP_055569|TREMBL:Q9BSY0|ENSEMBL:ENSP00000287028 Tax_Id=9606 Phosphatidylserine synthase I

270. GEEDC: 61658,
 >IPI:IPI00334503.1|REFSEQ_NP:NP_065175|TREMBL:Q9UFH7;Q96GN2;Q9H6B7|ENSEMBL:EN
 SP00000319338 Tax_Id=9606 KIAA1885 protein

271. ECDEG: 61774, >IPI:IPI00014310.1|SWISS-
 PROT:Q13616|REFSEQ_NP:NP_003583|ENSEMBL:ENSP00000326804 Tax_Id=9606 Cullin
 homolog 1

272. CEDGE: 61992, >IPI:IPI00299219.1|SWISS-
 PROT:O00622|REFSEQ_NP:NP_001545|ENSEMBL:ENSP00000271019 Tax_Id=9606 CYR61
 protein precursor

273. CEDEG: 62044, >IPI:IPI00007365.1|SWISS-
 PROT:O00635|REFSEQ_NP:NP_006346|ENSEMBL:ENSP00000230099 Tax_Id=9606 RING
 finger protein 15

274. CDGEE: 62288, >IPI:IPI00249276.1|REFSEQ_XP:XP_294475 Tax_Id=9606
 similar to Asparaginyl-tRNA synthetase, cytoplasmic (Asparagine--tRNA ligase)
 (AsnRS)

275. CDGEE: 62934, >IPI:IPI00012793.1|SWISS-PROT:Q13342-
 1|REFSEQ_NP:NP_009168|TREMBL:Q8IWJ1 Tax_Id=9606 Splice isoform LYSp100-B of
 Q13342 LYSp100 protein

276. CDGEE: 62938, >IPI:IPI00219535.1|SWISS-PROT:Q13342-2 Tax_Id=9606 Splice
 isoform LYSp100-A of Q13342 LYSp100 protein

277. CDGEE: 62940, >IPI:IPI00219536.1|SWISS-PROT:Q13342-
 3|ENSEMBL:ENSP00000181092 Tax_Id=9606 Splice isoform Sp140 of Q13342 LYSp100
 protein

278. DCGEE: 62964,
 >IPI:IPI00014972.1|TREMBL:Q9NPK8|ENSEMBL:ENSP00000309032;ENSP00000328558
 Tax_Id=9606 DJ34F7.1.2 (Tenascin XB)

279. EDCGE: 62964,
 >IPI:IPI00014972.1|TREMBL:Q9NPK8|ENSEMBL:ENSP00000309032;ENSP00000328558
 Tax_Id=9606 DJ34F7.1.2 (Tenascin XB)

280. CEDGE: 62966, >IPI:IPI00334575.1|TREMBL:Q9NPK9|ENSEMBL:ENSP00000330143
 Tax_Id=9606 DJ34F7.1.1 (Tenascin XB)

281. DCGEE: 62966, >IPI:IPI00334575.1|TREMBL:Q9NPK9|ENSEMBL:ENSP00000330143
 Tax_Id=9606 DJ34F7.1.1 (Tenascin XB)

282. EDCGE: 62966, >IPI:IPI00334575.1|TREMBL:Q9NPK9|ENSEMBL:ENSP00000330143
 Tax_Id=9606 DJ34F7.1.1 (Tenascin XB)

283. EDGE: 62966, >IPI:IPI00334575.1|TREMBL:Q9NPK9|ENSEMBL:ENSP00000330143
 Tax_Id=9606 DJ34F7.1.1 (Tenascin XB)

284. EEGCD: 63136, >IPI:IPI00023014.1|SWISS-
 PROT:P04275|REFSEQ_NP:NP_000543|TREMBL:Q99806;Q9UD22|ENSEMBL:ENSP00000261405
 Tax_Id=9606 Von Willebrand factor precursor

285. ECGDE: 63610,
>IPI:IPI00033553.1|REFSEQ_NP:NP_065106|TREMBL:Q9H847;Q9NQ90|ENSEMBL:ENSP00000314048 Tax_Id=9606 Hypothetical protein

286. DCGEE: 63848, >IPI:IPI00011901.2|SWISS-PROT:Q9H013-1|REFSEQ_NP:NP_075525|TREMBL:Q8TBU7;Q8N504 Tax_Id=9606 Splice isoform A of Q9H013 ADAM 19 precursor

287. DGEEC: 63848, >IPI:IPI00011901.2|SWISS-PROT:Q9H013-1|REFSEQ_NP:NP_075525|TREMBL:Q8TBU7;Q8N504 Tax_Id=9606 Splice isoform A of Q9H013 ADAM 19 precursor

288. GEECD: 63848, >IPI:IPI00011901.2|SWISS-PROT:Q9H013-1|REFSEQ_NP:NP_075525|TREMBL:Q8TBU7;Q8N504 Tax_Id=9606 Splice isoform A of Q9H013 ADAM 19 precursor

289. DCGEE: 63850, >IPI:IPI00249735.1|SWISS-PROT:Q9H013-2|REFSEQ_NP:NP_150377|ENSEMBL:ENSP00000257527 Tax_Id=9606 Splice isoform B of Q9H013 ADAM 19 precursor

290. DGEEC: 63850, >IPI:IPI00249735.1|SWISS-PROT:Q9H013-2|REFSEQ_NP:NP_150377|ENSEMBL:ENSP00000257527 Tax_Id=9606 Splice isoform B of Q9H013 ADAM 19 precursor

291. GEECD: 63850, >IPI:IPI00249735.1|SWISS-PROT:Q9H013-2|REFSEQ_NP:NP_150377|ENSEMBL:ENSP00000257527 Tax_Id=9606 Splice isoform B of Q9H013 ADAM 19 precursor

292. GEECD: 64386, >IPI:IPI00299652.1|SWISS-PROT:O75078-1|REFSEQ_NP:NP_002381|ENSEMBL:ENSP00000200557 Tax_Id=9606 Splice isoform Long of O75078 ADAM 11 precursor

293. GEECD: 64388, >IPI:IPI00299653.1|SWISS-PROT:O75078-2|REFSEQ_NP:NP_067625 Tax_Id=9606 Splice isoform Short of O75078 ADAM 11 precursor

294. CEEDG: 64522, >IPI:IPI00021427.1|SWISS-PROT:Q9NZL6-1 Tax_Id=9606 Splice isoform A of Q9NZL6 Ral guanine nucleotide dissociation stimulator-like 1

295. CEEDG: 64528, >IPI:IPI00299679.1|SWISS-PROT:Q9NZL6-2|REFSEQ_NP:NP_055964|ENSEMBL:ENSP00000303192 Tax_Id=9606 Splice isoform B of Q9NZL6 Ral guanine nucleotide dissociation stimulator-like 1

296. CEDGE: 64816, >IPI:IPI00334636.1|ENSEMBL:ENSP00000328067 Tax_Id=9606

297. DCGEE: 64816, >IPI:IPI00334636.1|ENSEMBL:ENSP00000328067 Tax_Id=9606

298. EDGE C: 64816, >IPI:IPI00334636.1|ENSEMBL:ENSP00000328067 Tax_Id=9606

299. EGDEC: 65012, >IPI:IPI00033970.1|SWISS-PROT:Q9H2R5-1|REFSEQ_NP:NP_059979|ENSEMBL:ENSP00000301421 Tax_Id=9606 Splice isoform 1 of Q9H2R5 Kallikrein 15 precursor

300. EGDEC: 65014, >IPI:IPI00150552.1|SWISS-PROT:Q9H2R5-2|REFSEQ_NP:NP_075382 Tax_Id=9606 Splice isoform 2 of Q9H2R5 Kallikrein 15 precursor

301. EGDEC: 65018, >IPI:IPI00219692.1|SWISS-PROT:Q9H2R5-3|REFSEQ_NP:NP_612630|TREMBL:Q96RQ0 Tax_Id=9606 Splice isoform 3 of Q9H2R5 Kallikrein 15 precursor

302. EGDEC: 65020, >IPI:IPI00219693.1|SWISS-PROT:Q9H2R5-4|REFSEQ_NP:NP_612631|ENSEMBL:ENSP00000314783 Tax_Id=9606 Splice isoform 4 of Q9H2R5 Kallikrein 15 precursor

303. GEECD: 65516, >IPI:IPI00018146.1|SWISS-PROT:P27348|REFSEQ_NP:NP_006817|TREMBL:Q9UP48|ENSEMBL:ENSP00000238081 Tax_Id=9606 14-3-3 protein tau

304. GDCEE: 66052, >IPI:IPI00016949.1|TREMBL:Q9NRZ1|ENSEMBL:ENSP00000307349 Tax_Id=9606 **Sodium** bicarbonate cotransporter NBC1

305. EDGCE: 66446, >IPI:IPI00021466.1|REFSEQ_NP:NP_006442|TREMBL:Q9H074|ENSEMBL:ENSP00000302768 Tax_Id=9606 Hypothetical protein

306. CEGED: 66934, >IPI:IPI00337657.1|REFSEQ_NP:NP_694972|TREMBL:Q96NK2|ENSEMBL:ENSP00000318348 Tax_Id=9606 nephrocystin 3

307. EEDGC: 66976, >IPI:IPI00250876.1|REFSEQ_XP:XP_296098 Tax_Id=9606 hypothetical protein XP_296098

308. CEGED: 67040, >IPI:IPI00100787.1|REFSEQ_NP:NP_115636|TREMBL:Q9H0B2|ENSEMBL:ENSP00000272454; ENSP00000330023; ENSP00000327486 Tax_Id=9606 Hypothetical protein

309. DCEGE: 67040, >IPI:IPI00100787.1|REFSEQ_NP:NP_115636|TREMBL:Q9H0B2|ENSEMBL:ENSP00000272454; ENSP00000330023; ENSP00000327486 Tax_Id=9606 Hypothetical protein

310. EECGD: 67796, >IPI:IPI00006171.2|REFSEQ_NP:NP_006156|TREMBL:Q12869; Q15312; Q9H048|ENSEMBL:ENSP00000303800; ENSP00000315172 Tax_Id=9606 R kappa B

311. ECEDG: 68094, >IPI:IPI00016645.1|SWISS-PROT:Q15375|REFSEQ_NP:NP_004431|TREMBL:Q8N368|ENSEMBL:ENSP00000257785 Tax_Id=9606 Ephrin type-A **receptor** 7 precursor

312. EDEGC: 69284, >IPI:IPI00300576.1|SWISS-PROT:P43220|REFSEQ_NP:NP_002053|ENSEMBL:ENSP00000229900 Tax_Id=9606 Glucagon-like peptide 1 **receptor** precursor

313. CEDGE: 69404, >IPI:IPI00334817.1|ENSEMBL:ENSP00000328379 Tax_Id=9606

314. ECEDG: 69906, >IPI:IPI00168052.1|TREMBL:Q8NAN7 Tax_Id=9606 Hypothetical protein FLJ35062

315. ECDGE: 70266, >IPI:IPI00057451.1|REFSEQ_XP:XP_060355 Tax_Id=9606 similar to RIKEN cDNA 1810030J14

316. EDECG: 70422, >IPI:IPI00329580.4|REFSEQ_NP:NP_689966|TREMBL:Q8IX30; Q8NAV8; Q8NAU9|ENSEMBL:ENSP00000274938 Tax_Id=9606 Hypothetical protein FLJ34743

317. GEECD: 71768, >IPI:IPI00023134.1|SWISS-PROT:Q9H2U9|REFSEQ_NP:NP_003808
Tax_Id=9606 **ADAM** 7 precursor

318. CEDGE: 71836,
>IPI:IPI00170865.1|REFSEQ_NP:NP_690864|TREMBL:Q9H2V6|ENSEMBL:ENSP00000261449
Tax_Id=9606 Membrane-associated guanylate kinase-related MAGI-3

319. DEEGC: 72098, >IPI:IPI00057797.4|REFSEQ_XP:XP_060405 Tax_Id=9606
similar to MEGF6

320. CEDGE: 72452, >IPI:IPI00252375.1|REFSEQ_XP:XP_296374 Tax_Id=9606
hypothetical protein XP_296374

321. EECGDG: 73116, >IPI:IPI00146811.1|REFSEQ_XP:XP_301149 Tax_Id=9606
similar to hypothetical protein

322. ECEGDG: 73550,
>IPI:IPI00334972.1|ENSEMBL:ENSP00000328574;ENSP00000332664 Tax_Id=9606

323. CEGDE: 74738,
>IPI:IPI00016724.1|REFSEQ_NP:NP_060393|TREMBL:Q8TCQ1;Q9NWR0|ENSEMBL:ENSP00000
274056 Tax_Id=9606 Hypothetical protein FLJ20668

324. DCGEE: 74744,
>IPI:IPI00069363.1|REFSEQ_XP:XP_016093|ENSEMBL:ENSP00000316037 Tax_Id=9606
similar to eukaryotic initiation factor 5A

325. ECGED: 74890,
>IPI:IPI00301812.1|REFSEQ_NP:NP_071420|TREMBL:Q9H4F8;Q96F78|ENSEMBL:ENSP00000
238629 Tax_Id=9606 Secreted modular **calcium**-binding protein precursor

326. EEDGC: 75218,
>IPI:IPI00253046.1|REFSEQ_XP:XP_301273|ENSEMBL:ENSP00000303287 Tax_Id=9606
similar to hypothetical protein

327. GECDE: 75998, >IPI:IPI00253274.1|REFSEQ_XP:XP_296525 Tax_Id=9606
hypothetical protein XP_296525

328. EDECG: 76060, >IPI:IPI00253294.1|REFSEQ_XP:XP_296538 Tax_Id=9606
hypothetical protein XP_296538

329. EGCED: 76404, >IPI:IPI00176387.1|TREMBL:Q8NE58|ENSEMBL:ENSP00000313062
Tax_Id=9606 Hypothetical protein

330. ECGED: 76536, >IPI:IPI00168623.1|TREMBL:Q8NE87|ENSEMBL:ENSP00000324097
Tax_Id=9606 Hypothetical protein

331. DCEGE: 76560, >IPI:IPI00014890.1|SWISS-
PROT:Q9NXR5|REFSEQ_NP:NP_060134|TREMBL:Q9NXQ9;Q9H6D6;Q8IUW1|ENSEMBL:ENSP00000
267339 Tax_Id=9606 Ankyrin repeat domain protein 10

332. EGDCE: 77184, >IPI:IPI00025365.1|SWISS-PROT:P14138-
1|REFSEQ_NP:NP_000105|ENSEMBL:ENSP00000311854;ENSP00000326965 Tax_Id=9606
Splice isoform Long of P14138 Endothelin-3 precursor

333. GDCEE: 77184, >IPI:IPI00025365.1|SWISS-PROT:P14138-
1|REFSEQ_NP:NP_000105|ENSEMBL:ENSP00000311854;ENSP00000326965 Tax_Id=9606
Splice isoform Long of P14138 Endothelin-3 precursor

334. EGDCE: 77186, >IPI:IPI00220210.1|SWISS-PROT:P14138-2 Tax_Id=9606 Splice isoform Short of P14138 Endothelin-3 precursor

335. GDCEE: 77186, >IPI:IPI00220210.1|SWISS-PROT:P14138-2 Tax_Id=9606 Splice isoform Short of P14138 Endothelin-3 precursor

336. DEGCE: 77234, >IPI:IPI00253545.1|REFSEQ_XP:XP_301395 Tax_Id=9606 similar to neuronal apoptosis inhibitor protein 9

337. EGCED: 77234, >IPI:IPI00253545.1|REFSEQ_XP:XP_301395 Tax_Id=9606 similar to neuronal apoptosis inhibitor protein 9

338. CEDGE: 77406, >IPI:IPI00302351.1|TREMBL:Q8NEF5 Tax_Id=9606 Similar to serine/threonine kinase 33

339. GDCEE: 77704, >IPI:IPI00168680.1|TREMBL:Q8NEJ2 Tax_Id=9606 Similar to solute carrier family 4, **sodium** bicarbonate cotransporter, member 4

340. CDGEE: 78456, >IPI:IPI00220259.1|SWISS-PROT:O95613|REFSEQ_NP:NP_006022|TREMBL:Q8IWJ7|ENSEMBL:ENSP00000291695 Tax_Id=9606 pericentrin B

341. GEDCE: 78564, >IPI:IPI00015345.1|SWISS-PROT:Q9NYQ7|REFSEQ_NP:NP_001398|ENSEMBL:ENSP00000164024 Tax_Id=9606 Cadherin EGF LAG seven-pass G-type **receptor** 3 precursor

342. DCGEE: 79218, >IPI:IPI00165045.1|TREMBL:Q9NYZ5|ENSEMBL:ENSP00000327220 Tax_Id=9606 **Calcium** channel alpha1E subunit, delta19 delta40 delta46 splice variant

343. EDEGC: 80064, >IPI:IPI00335249.1|TREMBL:Q9H6Y0|ENSEMBL:ENSP00000329394 Tax_Id=9606 Hypothetical protein FLJ21709

344. EGCDE: 80226, >IPI:IPI00254385.1|REFSEQ_XP:XP_296731 Tax_Id=9606 hypothetical protein XP_296731

345. EGDCE: 80386, >IPI:IPI00002849.1|SWISS-PROT:P28324-1|REFSEQ_NP:NP_001964|TREMBL:Q8IXL1|ENSEMBL:ENSP00000289703 Tax_Id=9606 Splice isoform 1 of P28324 ETS-domain protein ELK-4

346. EGDCE: 80392, >IPI:IPI00220318.1|SWISS-PROT:P28324-2|REFSEQ_NP:NP_068567 Tax_Id=9606 Splice isoform 2 of P28324 ETS-domain protein ELK-4

347. EECGD: 80622, >IPI:IPI00025803.2|SWISS-PROT:P06213-1|REFSEQ_NP:NP_000199|TREMBL:Q86WY9;Q9UCB7;Q9UCB8;Q9UCB9|ENSEMBL:ENSP00000303830 Tax_Id=9606 Splice isoform Long of P06213 **Insulin receptor** precursor

348. EECGD: 80624, >IPI:IPI00220325.2|SWISS-PROT:P06213-2 Tax_Id=9606 Splice isoform Short of P06213 **Insulin receptor** precursor

349. CGDEE: 80916, >IPI:IPI00032063.1|REFSEQ_NP:NP_061027|TREMBL:Q8WY28;Q8WY27;Q9NZR2;Q8WY30;Q8WY31;Q8WY26;Q8WY29|ENSEMBL:ENSP00000307314;ENSP00000316011;ENSP00000333057 Tax_Id=9606 Low density lipoprotein **receptor** related protein-deleted in tumor

350. EGEDC: 80918, >IPI:IPI00157417.1|SWISS-PROT:Q9BYH1-1|REFSEQ_NP:NP_066938|ENSEMBL:ENSP00000215905 Tax_Id=9606 Splice isoform 4 of Q9BYH1 Seizure 6-like protein precursor

351. EGEDC: 80926, >IPI:IPI00163788.5|SWISS-PROT:Q9BYH1-2|ENSEMBL:ENSP00000248933 Tax_Id=9606 Splice isoform 1 of Q9BYH1 Seizure 6-like protein precursor

352. EGEDC: 80928, >IPI:IPI00220333.1|SWISS-PROT:Q9BYH1-3 Tax_Id=9606 Splice isoform 2 of Q9BYH1 Seizure 6-like protein precursor

353. EGEDC: 80932, >IPI:IPI00220334.1|SWISS-PROT:Q9BYH1-4 Tax_Id=9606 Splice isoform 3 of Q9BYH1 Seizure 6-like protein precursor

354. EDGCE: 81198, >IPI:IPI00303274.1|TREMBL:Q96B61 Tax_Id=9606 Polyadenylate binding protein-interacting protein 1

355. DCGEE: 81792, >IPI:IPI00335323.1|ENSEMBL:ENSP00000330151 Tax_Id=9606

356. DGECE: 81834, >IPI:IPI00023824.1|SWISS-PROT:P98095|REFSEQ_NP:NP_001989|TREMBL:Q86V58|ENSEMBL:ENSP00000295760 Tax_Id=9606 Fibulin-2 precursor

357. GECED: 81834, >IPI:IPI00023824.1|SWISS-PROT:P98095|REFSEQ_NP:NP_001989|TREMBL:Q86V58|ENSEMBL:ENSP00000295760 Tax_Id=9606 Fibulin-2 precursor

358. ECGDE: 82610, >IPI:IPI00328847.2|REFSEQ_NP:NP_079047|TREMBL:Q9H897;Q86UY6|ENSEMBL:ENSP00000265463 Tax_Id=9606 Hypothetical protein FLJ13848

359. GEDCE: 82722, >IPI:IPI00303595.1|TREMBL:Q96BJ0|ENSEMBL:ENSP00000253015 Tax_Id=9606 Similar to uridine-cytidine kinase 1

360. EGCED: 83570, >IPI:IPI00100933.1|SWISS-PROT:Q96BW5|REFSEQ_NP:NP_109589|ENSEMBL:ENSP00000298942 Tax_Id=9606 Phosphotriesterase related protein

361. EDGCE: 83906, >IPI:IPI00024292.1|SWISS-PROT:P98164|REFSEQ_NP:NP_004516|TREMBL:Q9NP34|ENSEMBL:ENSP00000263816 Tax_Id=9606 Low-density lipoprotein **receptor**-related protein 2 precursor

362. ECEDG: 84438, >IPI:IPI00303963.1|SWISS-PROT:P06681|REFSEQ_NP:NP_000054|TREMBL:Q95IG1;O19694;Q8N6L6;Q86SV5|ENSEMBL:ENSP00000299367;ENSP00000319023;ENSP00000330581 Tax_Id=9606 Complement C2 precursor

363. CDEGE: 84848, >IPI:IPI00169309.1|REFSEQ_NP:NP_689566|TREMBL:Q8NHS1|ENSEMBL:ENSP00000291715 Tax_Id=9606 Similar to RIKEN cDNA 1700071E18 gene

364. ECEGD: 84966, >IPI:IPI00255906.1|REFSEQ_XP:XP_296987 Tax_Id=9606 hypothetical protein XP_296987

365. EDEGC: 85920, >IPI:IPI00335481.1|ENSEMBL:ENSP00000226892 Tax_Id=9606

366. CDEEG: 86376,
 >IPI:IPI00337759.1|REFSEQ_NP:NP_689961|TREMBL:Q96DP2|ENSEMBL:ENSP00000297222
 Tax_Id=9606 hypothetical protein FLJ31340

367. ECEGD: 87222,
 >IPI:IPI00304540.4|TREMBL:Q9C0A2;Q8WUN4;Q8N598;Q96SN2|REFSEQ_XP:XP_042708|ENS
 EMBL:ENSP00000322449 Tax_Id=9606 Hypothetical protein KIAA1761

368. EGDEC: 87286,
 >IPI:IPI00028276.1|TREMBL:Q9C0B0|REFSEQ_XP:XP_036115|ENSEMBL:ENSP00000293218
 Tax_Id=9606 Hypothetical protein KIAA1753

369. EEDGC: 88108, >IPI:IPI00256910.1|REFSEQ_XP:XP_301892 Tax_Id=9606
 hypothetical protein XP_301892

370. EEDGC: 88170, >IPI:IPI00335541.1|TREMBL:O94802 Tax_Id=9606 HTIM1

371. GEDEC: 88330, >IPI:IPI00006056.1|SWISS-
 PROT:P36915|REFSEQ_NP:NP_005266|TREMBL:Q96CT5;Q96QB8|ENSEMBL:ENSP00000259886;
 ENSP00000319707;ENSP00000316778 Tax_Id=9606 Guanine nucleotide-binding
 protein-like 1

372. GEEDC: 88688, >IPI:IPI00335574.1|ENSEMBL:ENSP00000316092 Tax_Id=9606

373. DCGEE: 88806, >IPI:IPI00257026.1|REFSEQ_XP:XP_303108 Tax_Id=9606
 hypothetical protein XP_303108

374. GEECD: 89054, >IPI:IPI00000779.1|SWISS-PROT:Q9P0K1-
 1|REFSEQ_NP:NP_068369|TREMBL:Q8IYE7;Q9UKK0;Q86UM2|ENSEMBL:ENSP00000265727
 Tax_Id=9606 Splice isoform 1 of Q9P0K1 ADAM 22 precursor

375. GEECD: 89060, >IPI:IPI00220631.1|SWISS-PROT:Q9P0K1-
 2|REFSEQ_NP:NP_068368|ENSEMBL:ENSP00000315900 Tax_Id=9606 Splice isoform 2 of
 Q9P0K1 ADAM 22 precursor

376. GEECD: 89068, >IPI:IPI00220632.1|SWISS-PROT:Q9P0K1-
 3|REFSEQ_NP:NP_004185 Tax_Id=9606 Splice isoform 3 of Q9P0K1 ADAM 22
 precursor

377. GEECD: 89076, >IPI:IPI00220634.1|SWISS-PROT:Q9P0K1-
 4|REFSEQ_NP:NP_068367 Tax_Id=9606 Splice isoform 4 of Q9P0K1 ADAM 22
 precursor

378. GEECD: 89080, >IPI:IPI00220635.1|SWISS-PROT:Q9P0K1-
 5|REFSEQ_NP:NP_057435 Tax_Id=9606 Splice isoform 5 of Q9P0K1 ADAM 22
 precursor

379. EDGE: 89742, >IPI:IPI00027473.1|SWISS-
 PROT:P08172|REFSEQ_NP:NP_000730|TREMBL:Q86SJ1;Q96RH0|ENSEMBL:ENSP00000319984
 Tax_Id=9606 Muscarinic acetylcholine receptor M2

380. ECEGD: 89816,
 >IPI:IPI00335591.1|ENSEMBL:ENSP00000330504;ENSP00000332566 Tax_Id=9606

381. DEECG: 90054, >IPI:IPI00016353.1|SWISS-
 PROT:O94907|REFSEQ_NP:NP_036374|ENSEMBL:ENSP00000224974 Tax_Id=9606 Dickkopf
 related protein-1 precursor

382. EDGCE: 90668, >IPI:IPI00337775.1|REFSEQ_NP:NP_877590|TREMBL:Q9BS63
Tax_Id=9606 Similar to polyadenylate binding protein-interacting protein 1

383. GEECD: 91036,
>IPI:IPI00337776.1|REFSEQ_XP:XP_291251|ENSEMBL:ENSP00000175238 Tax_Id=9606
similar to ADAM 7 precursor (A disintegrin and metalloproteinase domain 7)
(Sperm maturation-related glycoprotein GP-83)

384. CEGED: 91690, >IPI:IPI00305390.1|SWISS-PROT:P52789 Tax_Id=9606
Hexokinase, type II

385. ECGDE: 91888, >IPI:IPI00257749.1|REFSEQ_XP:XP_298505 Tax_Id=9606
hypothetical protein XP_298505

386. CEGED: 92126,
>IPI:IPI00182473.2|REFSEQ_XP:XP_208296|ENSEMBL:ENSP00000283154;ENSP0000030365
9 Tax_Id=9606 similar to RAN-binding protein 2-like 1 isoform 1

387. DCEGE: 92126,
>IPI:IPI00182473.2|REFSEQ_XP:XP_208296|ENSEMBL:ENSP00000283154;ENSP0000030365
9 Tax_Id=9606 similar to RAN-binding protein 2-like 1 isoform 1

388. EGEDC: 92248, >IPI:IPI00257843.1|REFSEQ_XP:XP_298576 Tax_Id=9606
hypothetical protein XP_298576

389. CEEGD: 92738, >IPI:IPI00186138.1|ENSEMBL:ENSP00000295809 Tax_Id=9606

390. GCEED: 92890,
>IPI:IPI00021701.1|REFSEQ_NP:NP_056031|TREMBL:O43314|ENSEMBL:ENSP00000274387
Tax_Id=9606 Hypothetical protein KIAA0433

391. ECDEG: 92984,
>IPI:IPI00258019.1|REFSEQ_XP:XP_291378|ENSEMBL:ENSP00000289853 Tax_Id=9606
similar to C4b-binding protein alpha chain precursor (C4bp) (Proline-rich
protein) (PRP)

392. ECGED: 93020,
>IPI:IPI00305608.1|TREMBL:O43339|REFSEQ_XP:XP_209111|ENSEMBL:ENSP00000303820
Tax_Id=9606 R28830_1

393. ECEGD: 93236,
>IPI:IPI00335713.1|REFSEQ_NP:NP_006759|TREMBL:O43238|ENSEMBL:ENSP00000330813
Tax_Id=9606 BRCA1 associated protein

394. CEGDE: 94552,
>IPI:IPI00063121.1|REFSEQ_NP:NP_542381|TREMBL:Q96HJ6|ENSEMBL:ENSP00000256538
Tax_Id=9606 Similar to RIKEN cDNA 5730421E18 gene

395. DGCEE: 94990, >IPI:IPI00106955.1|TREMBL:Q9BUA3 Tax_Id=9606 Hypothetical
protein

396. CGDEE: 95136, >IPI:IPI00063273.1|SWISS-
PROT:Q96I34|REFSEQ_NP:NP_116291|ENSEMBL:ENSP00000292539 Tax_Id=9606 Protein
phosphatase 1 regulatory inhibitor subunit 16A

397. DCEGE: 95884, >IPI:IPI00004437.1|TREMBL:Q9BV12|ENSEMBL:ENSP00000312534
Tax_Id=9606 Similar to hypothetical protein FLJ20093

398. CGEED: 96084,
 >IPI:IPI00063592.1|REFSEQ_NP:NP_543137|TREMBL:Q96RY2;Q8WVK5;Q96IE6;Q86X18|ENS
 EMBL:ENSP00000303779 Tax_Id=9606 Similar to RIKEN cDNA 2310012N15 gene

399. DEEGC: 96108,
 >IPI:IPI00063605.1|REFSEQ_NP:NP_116265|TREMBL:Q96IF1|ENSEMBL:ENSP00000262713;
 ENSP00000331606 Tax_Id=9606 Similar to ajuba

400. EGCED: 96108,
 >IPI:IPI00063605.1|REFSEQ_NP:NP_116265|TREMBL:Q96IF1|ENSEMBL:ENSP00000262713;
 ENSP00000331606 Tax_Id=9606 Similar to ajuba

401. DGCEE: 96196,
 >IPI:IPI00063633.1|TREMBL:Q96IH0|REFSEQ_XP:XP_290508|ENSEMBL:ENSP00000294244
 Tax_Id=9606 Hypothetical protein

402. GEECD: 96372, >IPI:IPI00031687.1|SWISS-PROT:Q9Y215-
 1|REFSEQ_NP:NP_005668 Tax_Id=9606 Splice isoform I of Q9Y215
 Acetylcholinesterase collagenic tail peptide precursor

403. GEECD: 96374, >IPI:IPI00220970.1|SWISS-PROT:Q9Y215-
 2|REFSEQ_NP:NP_536799|ENSEMBL:ENSP00000326594 Tax_Id=9606 Splice isoform II
 of Q9Y215 Acetylcholinesterase collagenic tail peptide precursor

404. GEECD: 96378, >IPI:IPI00220971.1|SWISS-PROT:Q9Y215-3 Tax_Id=9606 Splice
 isoform III of Q9Y215 Acetylcholinesterase collagenic tail peptide precursor

405. GEECD: 96386, >IPI:IPI00220972.1|SWISS-PROT:Q9Y215-
 4|REFSEQ_NP:NP_536801 Tax_Id=9606 Splice isoform IV of Q9Y215
 Acetylcholinesterase collagenic tail peptide precursor

406. GDCEE: 96466, >IPI:IPI00258909.1|REFSEQ_XP:XP_303547 Tax_Id=9606
 hypothetical protein XP_303547

407. GEECD: 96498, >IPI:IPI00306205.1|SWISS-
 PROT:O43506|REFSEQ_NP:NP_003805|ENSEMBL:ENSP00000256389 Tax_Id=9606 **ADAM** 20
 precursor

408. ECDGE: 96822, >IPI:IPI00335864.1|ENSEMBL:ENSP00000332147 Tax_Id=9606

409. CDGEE: 97348,
 >IPI:IPI00294137.3|REFSEQ_NP:NP_059992|TREMBL:Q99876|ENSEMBL:ENSP00000303634
 Tax_Id=9606 apolipoprotein E **receptor** 2 isoform 3 precursor

410. GEECD: 97714, >IPI:IPI00259271.1|REFSEQ_XP:XP_298879 Tax_Id=9606
 hypothetical protein XP_298879

411. DECGE: 98628, >IPI:IPI00064242.1|TREMBL:Q96JP8 Tax_Id=9606 Fibrillin3

412. EDECG: 98628, >IPI:IPI00064242.1|TREMBL:Q96JP8 Tax_Id=9606 Fibrillin3

413. ECGED: 98744, >IPI:IPI00335965.1|ENSEMBL:ENSP00000332244 Tax_Id=9606

414. GEDCE: 99692, >IPI:IPI00027771.1|SWISS-
 PROT:Q9HA47|REFSEQ_NP:NP_113620|ENSEMBL:ENSP00000298508 Tax_Id=9606 Uridine-
 cytidine kinase 1

415. GEECD: 100172,
 >IPI:IPI00021903.1|REFSEQ_NP:NP_003803|TREMBL:O75077;Q9UKK1|ENSEMBL:ENSP00000264377 Tax_Id=9606 MDC3

416. GEDCE: 100292,
 >IPI:IPI00306850.1|TREMBL:O75095|REFSEQ_XP:XP_031401|ENSEMBL:ENSP00000294599 Tax_Id=9606 MEGF6

417. GEECD: 101716,
 >IPI:IPI00013569.1|REFSEQ_NP:NP_064714|TREMBL:Q9BXP8;Q96PH8;Q9H4C9|ENSEMBL:ENSP00000263529 Tax_Id=9606 Pregnancy-associated plasma preproprotein-A2

418. CGEDE: 102056,
 >IPI:IPI00307150.1|REFSEQ_NP:NP_065801|TREMBL:Q96HN3;Q9HAV4;Q9ULC9;Q9BWM6;Q9H9M4;Q9NT89;Q9NW39;Q96G48;Q9H8N6;Q9BZV5|ENSEMBL:ENSP00000265351 Tax_Id=9606 Exportin 5

419. CEDGE: 102110, >IPI:IPI00012472.1|SWISS-PROT:P31645|REFSEQ_NP:NP_001036|TREMBL:Q9NYN7|ENSEMBL:ENSP00000261707 Tax_Id=9606 **Sodium**-dependent serotonin transporter

420. EECGD: 102130, >IPI:IPI00260357.1|REFSEQ_XP:XP_305088 Tax_Id=9606 hypothetical protein XP_305088

421. EEDGC: 102336,
 >IPI:IPI00307216.1|REFSEQ_NP:NP_059125|TREMBL:Q9NVH5;Q9HAY6|ENSEMBL:ENSP00000258168 Tax_Id=9606 Beta, beta-carotene 15,15'-dioxygenase

422. DECEG: 102526, >IPI:IPI00337828.1|TREMBL:Q9BXY3 Tax_Id=9606 Thrombospondin

423. DEEGC: 102716, >IPI:IPI00307298.1|TREMBL:O75197 Tax_Id=9606 Lipoprotein **receptor** related protein 5

424. ECEDG: 102922,
 >IPI:IPI00336105.1|ENSEMBL:ENSP00000332419;ENSP00000332864 Tax_Id=9606

425. CEDGE: 103100,
 >IPI:IPI00220106.1|REFSEQ_NP:NP_066016|TREMBL:Q9HCD8;Q9BWX0;Q9HBC4|ENSEMBL:ENSP00000304604 Tax_Id=9606 Membrane-associated guanylate kinase MAGI3

426. EDGEC: 103120,
 >IPI:IPI00307359.1|REFSEQ_NP:NP_683707|TREMBL:Q9BRN2;Q8NB17;Q86YQ3|ENSEMBL:ENSP00000325220 Tax_Id=9606 oxysterol-binding protein-like protein 9 isoform f

427. EGEDC: 103162,
 >IPI:IPI00065186.1|REFSEQ_NP:NP_872328|TREMBL:Q96LR4|REFSEQ_XP:XP_087261|ENSEMBL:ENSP00000295569 Tax_Id=9606 Hypothetical protein FLJ25161

428. EGECD: 103220, >IPI:IPI00097257.2|SWISS-PROT:Q96M20|REFSEQ_NP:NP_543024|ENSEMBL:ENSP00000279046 Tax_Id=9606 Protein C20orf152

429. ECGED: 103328, >IPI:IPI00220045.1|SWISS-PROT:Q9NVU0-1|REFSEQ_NP:NP_060589|ENSEMBL:ENSP00000299853 Tax_Id=9606 Splice isoform 1 of Q9NVU0 DNA-directed RNA polymerases III 80 kDa polypeptide

430. ECGDE: 103714, >IPI:IPI00011245.1|SWISS-PROT:Q9HBJ7|REFSEQ_NP:NP_065954|ENSEMBL:ENSP00000254181 Tax_Id=9606 Ubiquitin carboxyl-terminal hydrolase 29

431. GEECD: 103878, >IPI:IPI00011224.2|SWISS-PROT:O43184-1|REFSEQ_NP:NP_003465|ENSEMBL:ENSP00000278082 Tax_Id=9606 Splice isoform 12L of O43184 **ADAM** 12 precursor

432. ECGDE: 103928, >IPI:IPI00007777.1|SWISS-PROT:Q9UL36-1|TREMBL:O95276|ENSEMBL:ENSP00000253159 Tax_Id=9606 Splice isoform B of Q9UL36 **Zinc** finger protein 236

433. ECGDE: 103930, >IPI:IPI00307551.1|SWISS-PROT:Q9UL36-2|REFSEQ_NP:NP_031371|ENSEMBL:ENSP00000322361 Tax_Id=9606 Splice isoform A of Q9UL36 **Zinc** finger protein 236

434. EDEGC: 104252, >IPI:IPI00013162.2|SWISS-PROT:P41217-1 Tax_Id=9606 Splice isoform 1 of P41217 OX-2 membrane glycoprotein precursor

435. EDEGC: 104260, >IPI:IPI00221361.1|SWISS-PROT:P41217-2|REFSEQ_NP:NP_005935|ENSEMBL:ENSP00000312766 Tax_Id=9606 Splice isoform 2 of P41217 OX-2 membrane glycoprotein precursor

436. CEDGE: 104728, >IPI:IPI00001152.1|REFSEQ_NP:NP_112168|TREMBL:Q9BYT3|ENSEMBL:ENSP00000252710; ENSP00000320754; ENSP00000320933 Tax_Id=9606 Serine/threonine kinase 33

437. EEGDC: 105006, >IPI:IPI00012165.3|SWISS-PROT:Q9HC84|TREMBL:Q93043; Q9NYE4|REFSEQ_XP:XP_039854; XP_039877|ENSEMBL:ENSP0000227189 Tax_Id=9606 Mucin 5B precursor

438. EEC DG: 105502, >IPI:IPI00261059.1|REFSEQ_XP:XP_303959 Tax_Id=9606 hypothetical protein XP_303959

439. EEGDC: 105532, IPI:IPI00021119.1|REFSEQ_NP:NP_003645|TREMBL:O43916|ENSEMBL:ENSP00000309270 Tax_Id=9606 Chondroitin-6-sulfotransferase (Hypothetical protein)