

Host Determinants of Expression of the *Helicobacter pylori* BabA Adhesin

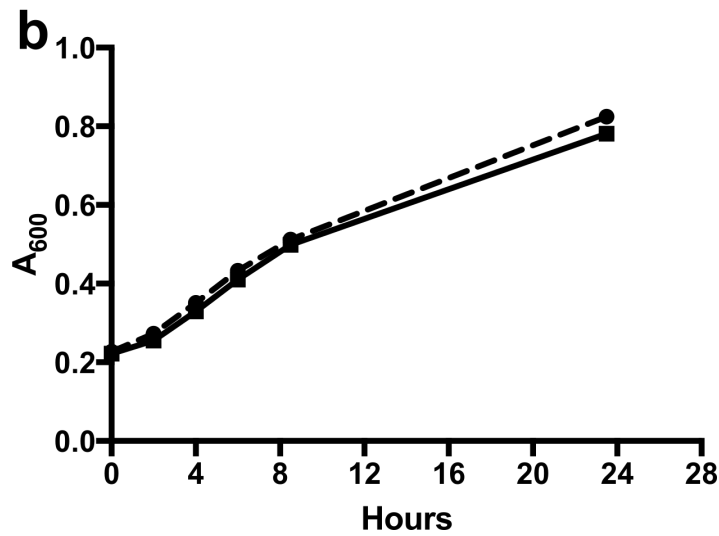
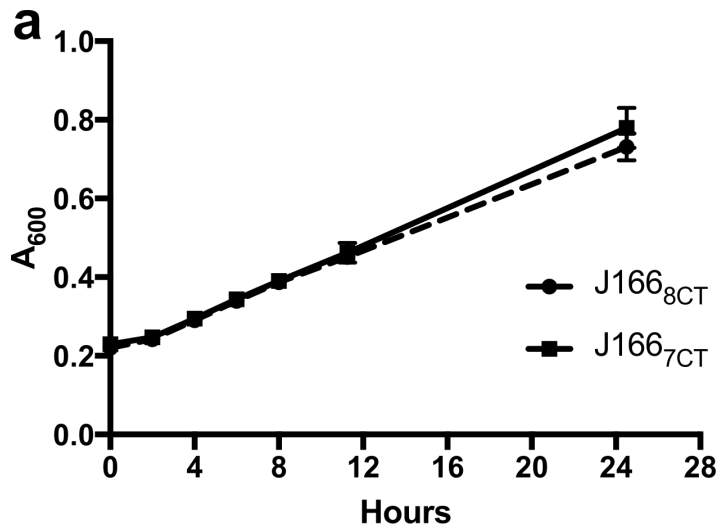
Mary E. Kable, Lori M. Hansen, Cathy M. Styer, Samuel L. Deck, Olena Rakhimova, Anna Shevtsova, Kathryn A. Eaton, Miriam E. Martin, Pär Gideonsson, Thomas Borén, and Jay V. Solnick

Supplementary Files

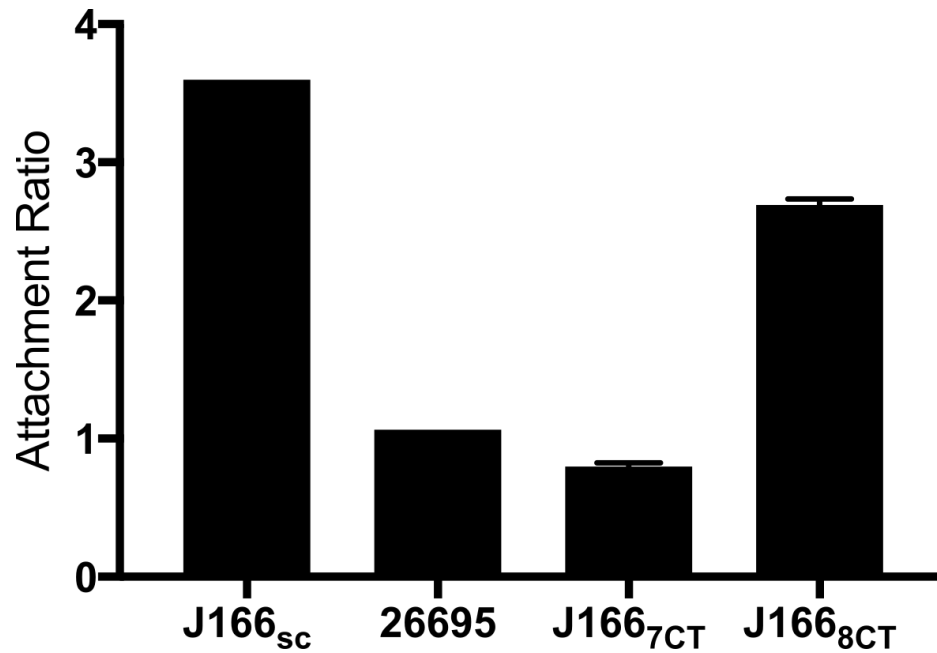
Supplementary Table S1. Mouse Strains

Strain	Gender	Vendor ^a
C57BL/6	Female	Taconic
RAG2 ^{-/-}	Female	Taconic
C57BL/6	Female	Jackson Laboratory
MyD88 ^{-/-}	Female	Jackson Laboratory
TLR2 ^{-/-}	Female	Jackson Laboratory
TLR4 ^{-/-}	Female	Jackson Laboratory
FVB/N	Male/Female	Charles River Laboratories
Le ^b transgenic	Male/Female	Colony maintained

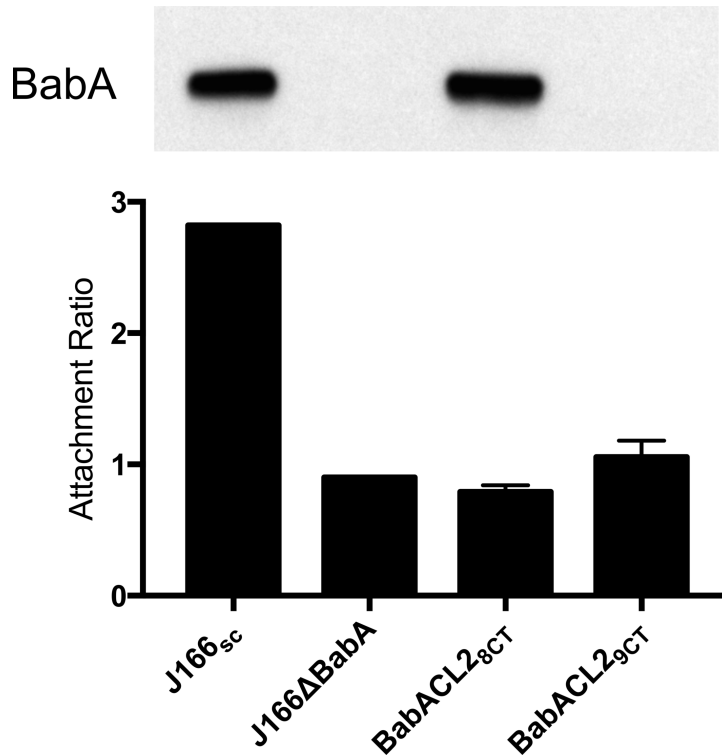
^a Jackson Laboratory, Sacramento, CA, USA; Taconic, Germantown, NY, USA; Charles River Laboratories, Wilmington, MA, USA



Supplementary Figure S1. Growth curves of J166_{8CT} and J166_{7CT}. Mean (\pm SEM) A_{600} for 3 individual clones of J166_{8CT} and J166_{7CT} grown in Brucella broth overnight showed no differences in growth rate. The experiment was conducted twice (A and B) to ensure that subtle, non-significant variation in growth rate was not robust.



Supplementary Figure S2. Le^b ELISA assay to detect functional BabA expression in *H. pylori* clones. Clones of J166_{sc} engineered with 8 or 7 CT repeats in the 5' end of *babA* were evaluated for attachment to Le^b using an ELISA. The average attachment ratios for three clones of J166_{8CT} and J166_{7CT} are shown. *H. pylori* J166_{sc} and 26695 served as positive and negative controls, respectively.



Supplementary Figure S4. Anti-BabA western blot and Le^b ELISA assay to detect BabA expression and function in *H. pylori* clones. Clones of BabACL2 with 8 or 9 CT repeats in the 5' end of *babA* were evaluated for expression of BabA by western blot (upper panel) and attachment to Le^b using an ELISA (lower panel). The average attachment ratios for three clones of BabACL2_{8CT} and BabACL2_{9CT} are shown. *H. pylori* J166_{SC} and J166ΔBabA served as positive and negative controls, respectively.

Supplementary References

1. Alm, R. A. *et al.* Genomic-sequence comparison of two unrelated isolates of the human gastric pathogen *Helicobacter pylori*. *Nature* **397**, 176-180, doi:10.1038/16495 (1999).
2. Styer, C. M. *et al.* Expression of the BabA adhesin during experimental infection with *Helicobacter pylori*. *Infect Immun* **78**, 1593-1600, doi:10.1128/IAI.01297-09 (2010).