

Supplementary Information

**The Local CNP/GC-B system in growth plate is responsible for physiological endochondral bone growth**

Kazumasa Nakao<sup>1</sup>, Kenji Osawa<sup>1</sup>, Akihiro Yasoda<sup>2</sup>, Shigeki Yamanaka<sup>1</sup>, Toshihito Fujii<sup>2</sup>, Eri Kondo<sup>2</sup>, Noriaki Koyama<sup>1</sup>, Naotetsu Kanamoto<sup>2</sup>, Masako Miura<sup>2</sup>, Koichiro Kuwahara<sup>3</sup>, Haruhiko Akiyama<sup>4</sup>, Kazuhisa Bessho<sup>1</sup> and Kazuwa Nakao<sup>5</sup>

<sup>1</sup>Department of Oral and Maxillofacial Surgery, Kyoto University Graduate School of Medicine, Kyoto 606-8507, Japan

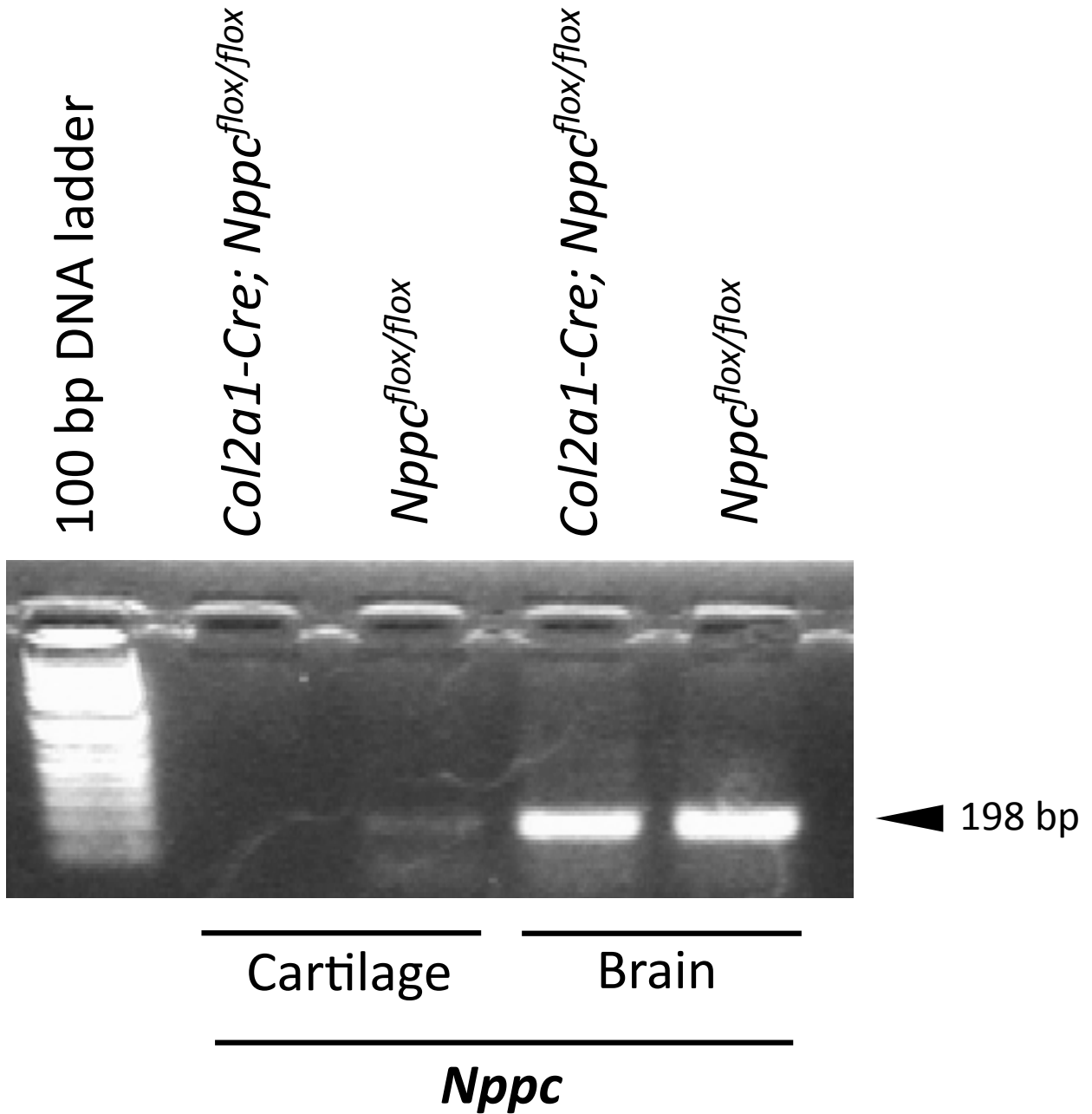
<sup>2</sup>Department of Diabetes, Endocrinology and Nutrition, Kyoto University Graduate School of Medicine, Kyoto 606-8507, Japan

<sup>3</sup>Department of Cardiovascular Medicine, Kyoto University Graduate School of Medicine, Kyoto 606-8507, Japan

<sup>4</sup>Department of Orthopaedic Surgery, Gifu University Graduate School of Medicine, Gifu 501-1194, Japan

<sup>5</sup>Medical Innovation Center, Kyoto University Graduate School of Medicine, Kyoto 606-8507, Japan

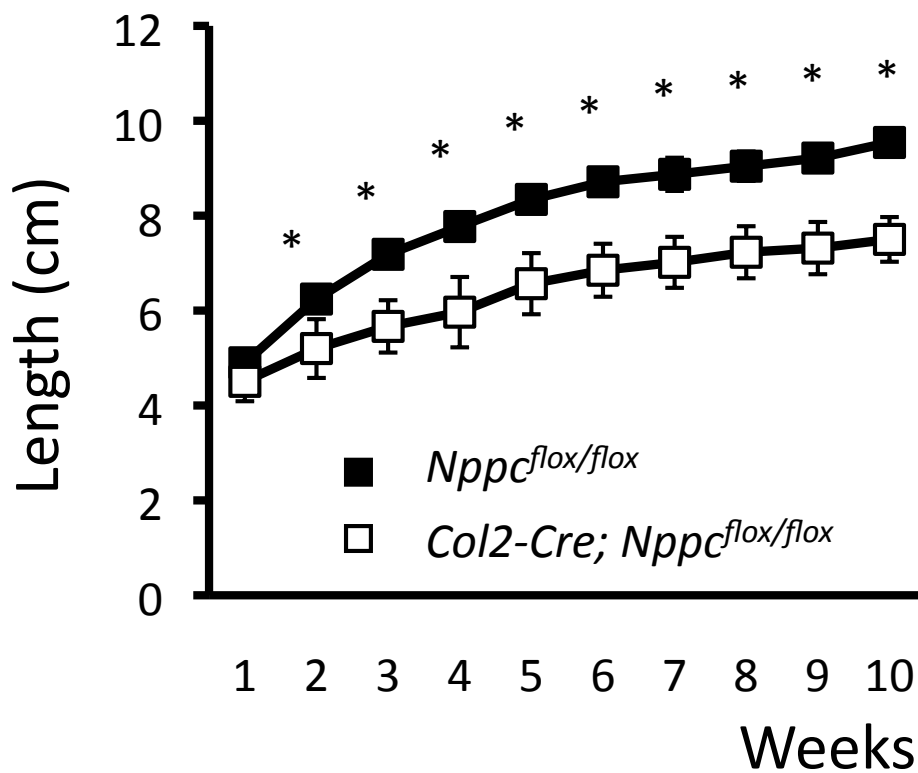
Supplementary Figure



Supplementary Figure S1

The full-length gel exhibiting the result of the RT-PCR for *Nppc* in cartilage and brain of *Col2-Cre; Nppc<sup>flox/flox</sup>* and *Nppc<sup>flox/flox</sup>* mice.

Supplementary Figure

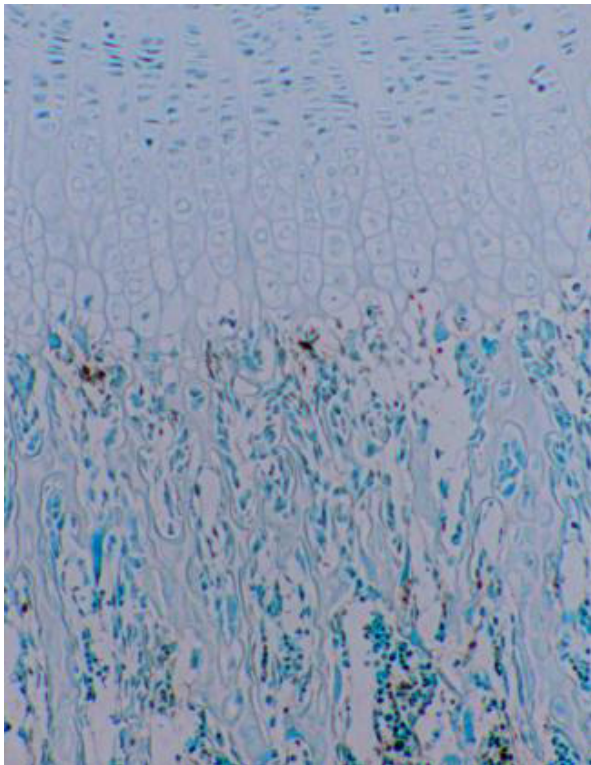


Supplementary Figure S2

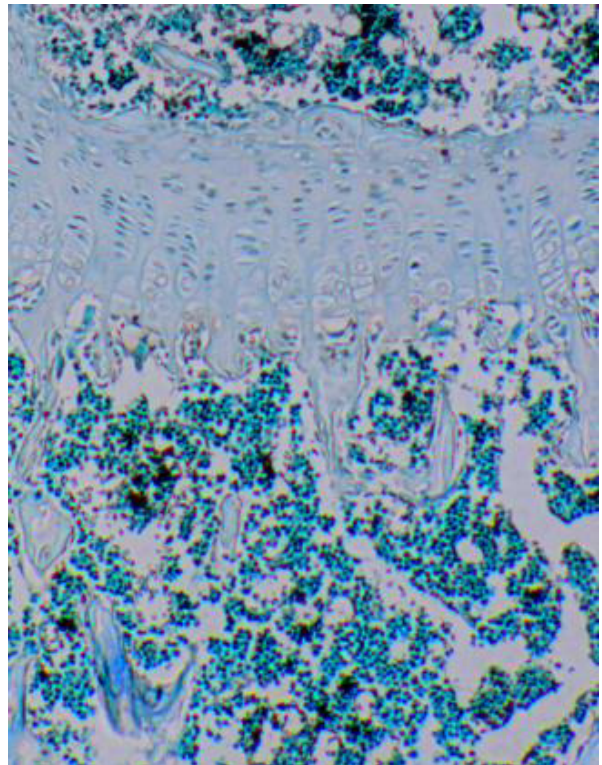
Growth curves of naso-anal length of *Nppc<sup>flox/flox</sup>* (■) and *Col2-Cre; Nppc<sup>flox/flox</sup>* (□) mice.

\*: P < 0.01.

Supplementary Figure



*Nppc<sup>flox/flox</sup>*

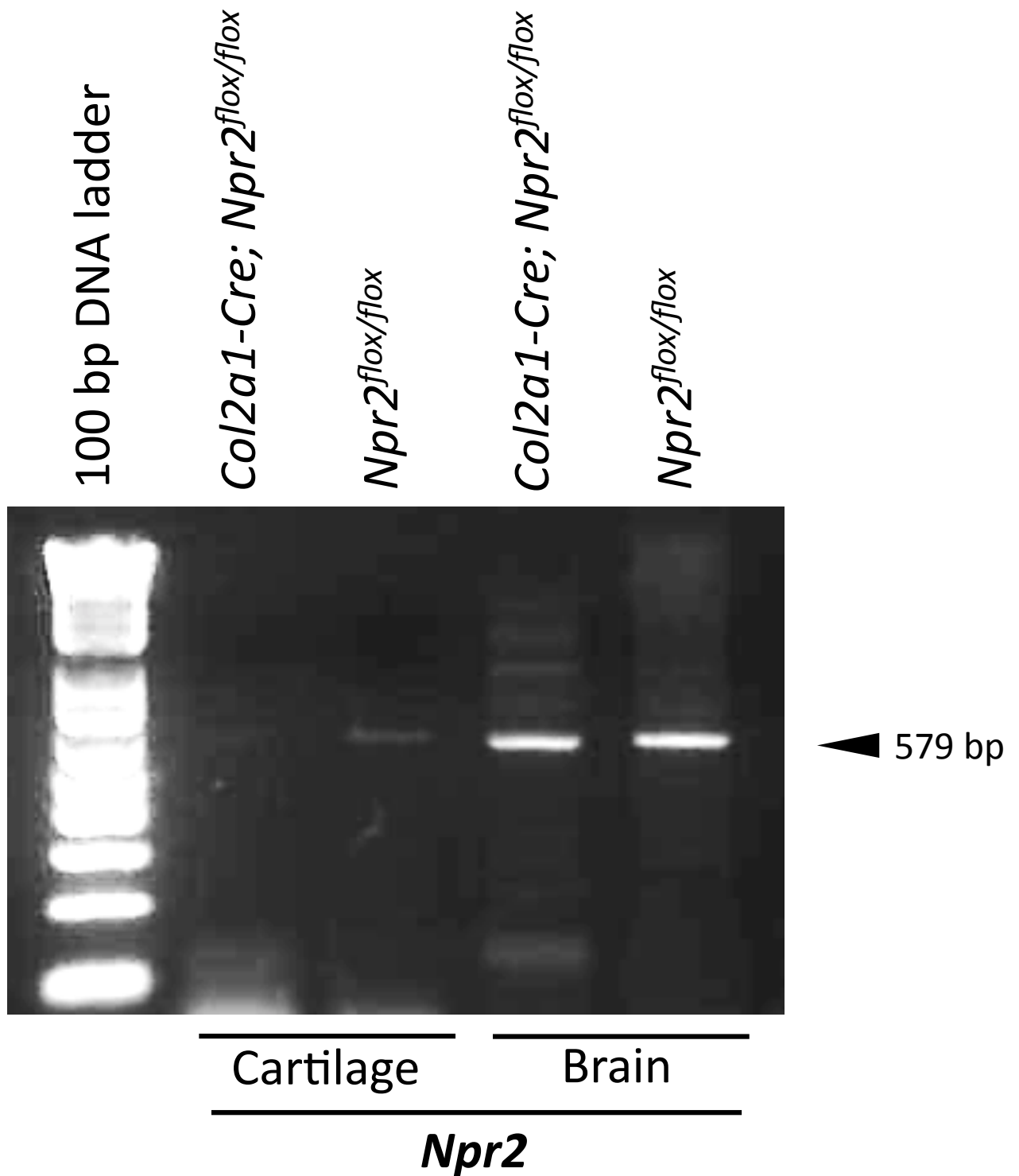


*Col2a1-Cre;  
Nppc<sup>flox/flox</sup>*

Supplementary Figure S3

TUNEL staining of growth plates of *Nppc<sup>flox/flox</sup>* and *Col2-Cre; Npr2<sup>flox/flox</sup>* mice.

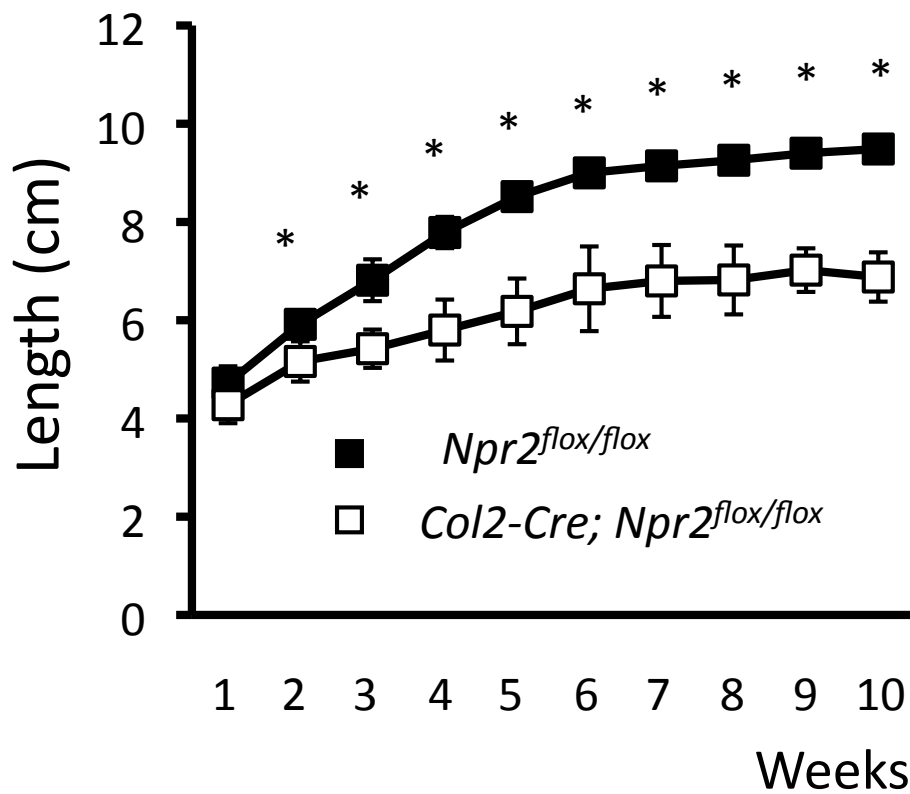
Supplementary Figure



Supplementary Figure S4

The full-length gel exhibiting the result of the RT-PCR for *Npr2* in cartilage and brain of *Col2-Cre; Npr2<sup>flox/flox</sup>* and *Npr2<sup>flox/flox</sup>* mice.

Supplementary Figure

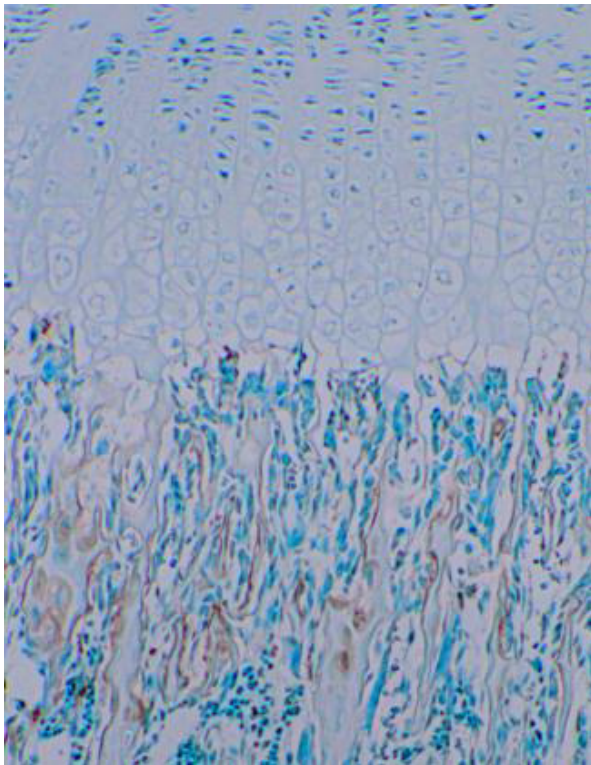


Supplementary Figure S5

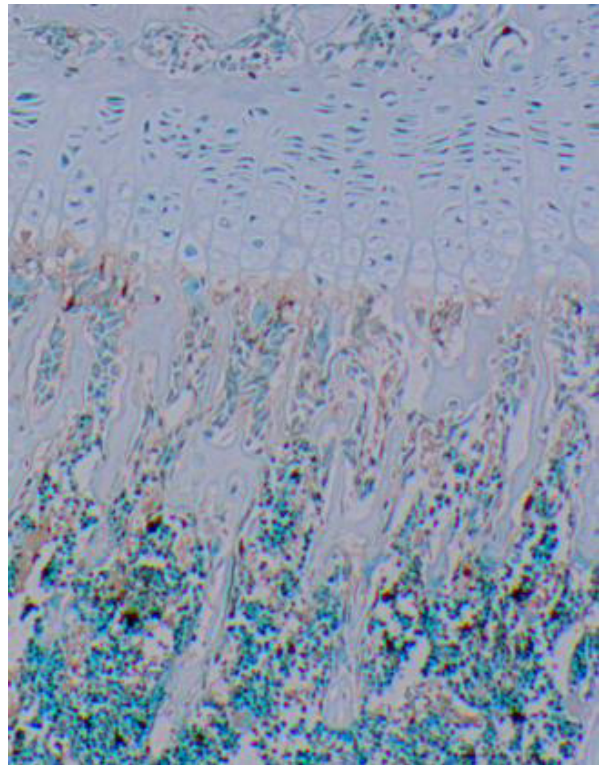
Growth curves of naso-anal length of *Npr2<sup>flox/flox</sup>* (■) and *Col2-Cre; Npr2<sup>flox/flox</sup>* (□) mice.

\*: P < 0.01.

Supplementary Figure



*Npr2<sup>flox/flox</sup>*



*Col2a1-Cre;  
Npr2<sup>flox/flox</sup>*

Supplementary Figure S6  
TUNEL staining of growth plates of *Npr2<sup>flox/flox</sup>* and *Col2-Cre; Npr2<sup>flox/flox</sup>* mice.