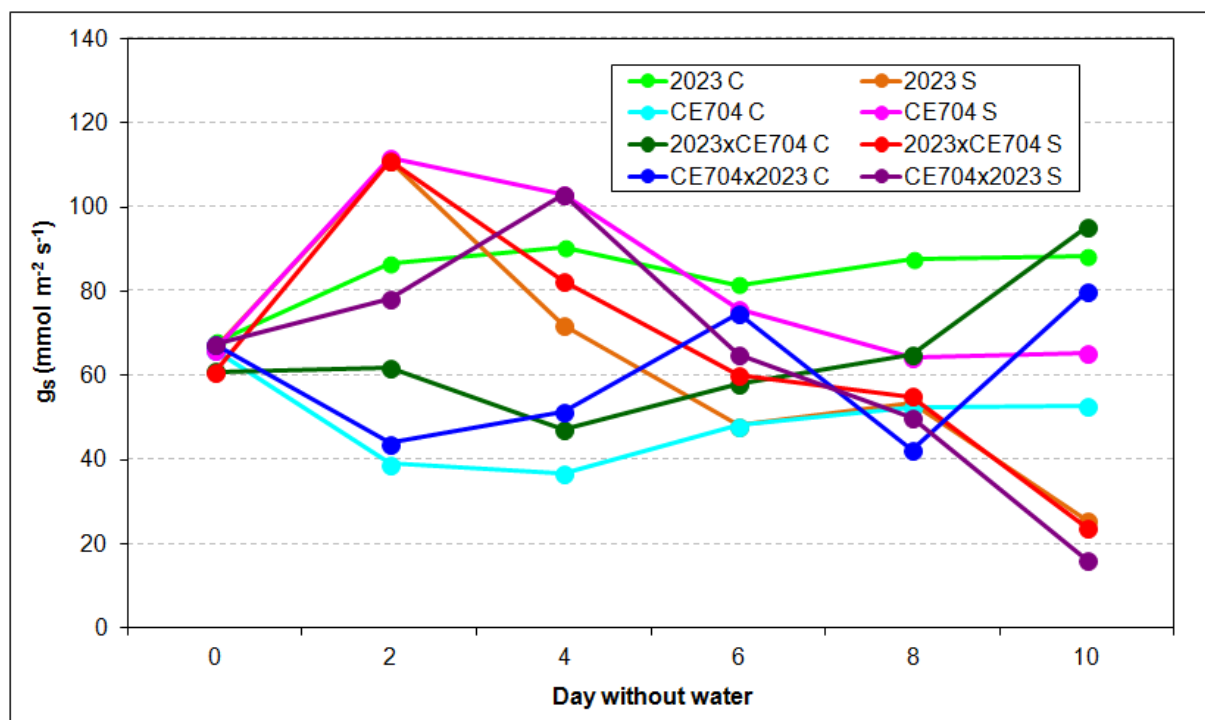


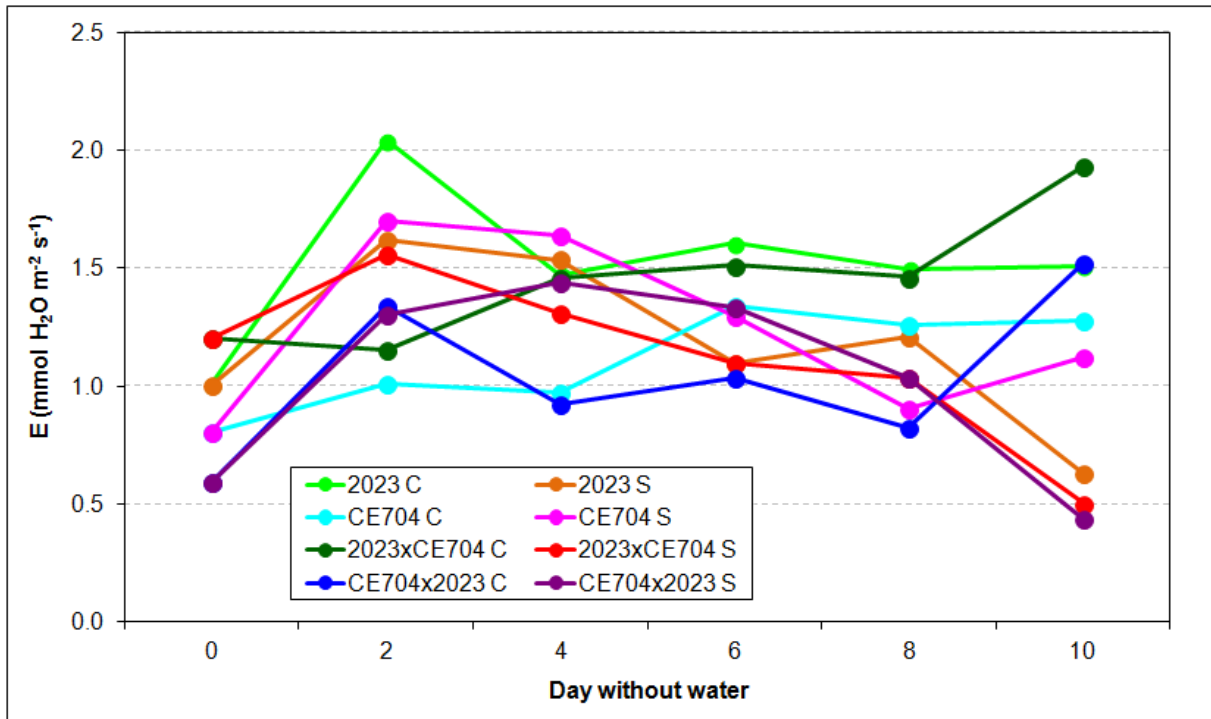
Changes in the gas exchange parameters of leaves of maize inbred lines 2023 and CE704 and their F1 hybrids 2023×CE704 and CE704×2023 during 10 days of drought simulation. For better clarity, only the means (n = 22-28 plants) are shown in the graphs and the statistical significance of the differences between the respective variants (*i.e.*, between the control and stressed plants of each individual genotype or between individual genotypes under control *vs* stress conditions) as determined for each day separately by the Games-Howell test is given below the respective graphs (\* ... significant at  $p < 0.05$ , ns ... not significant). C ... control, S ... drought stress.

### Stomatal conductance (gs)



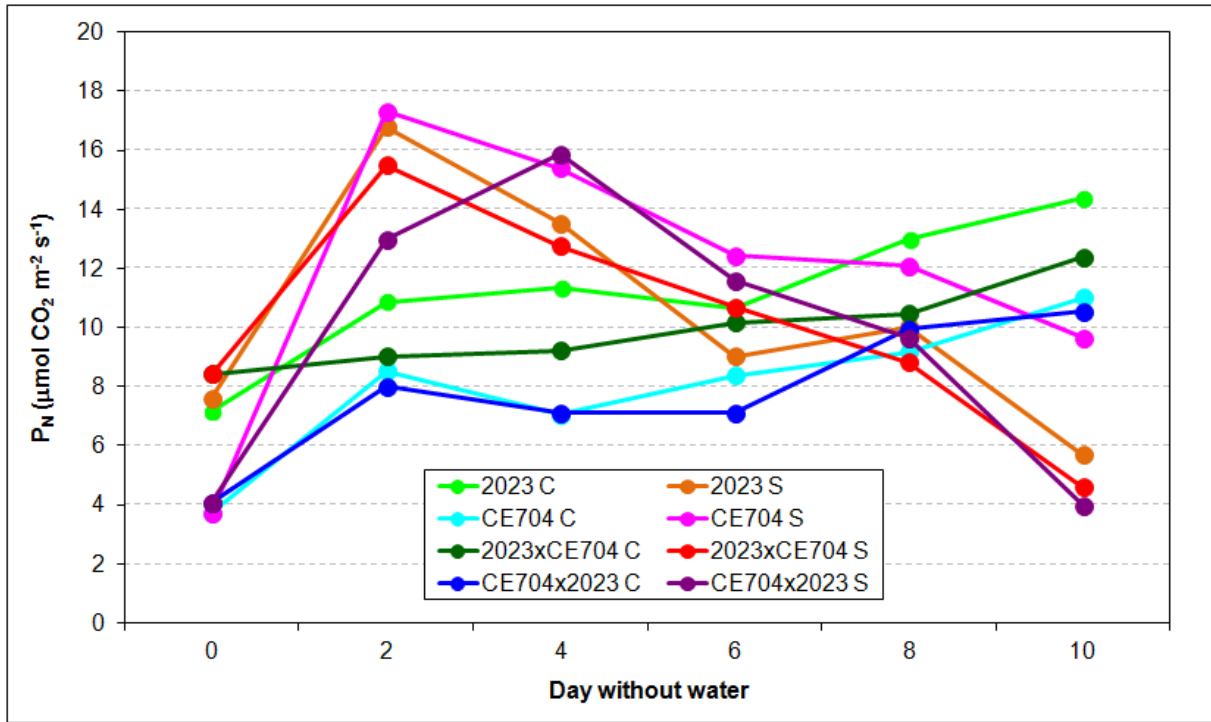
|                             | Day 0 | Day 2 | Day 4 | Day 6 | Day 8 | Day 10 |
|-----------------------------|-------|-------|-------|-------|-------|--------|
| 2023 C – 2023 S             |       | ns    | ns    | *     | *     | *      |
| CE704 C – CE704 S           |       | *     | *     | *     | ns    | ns     |
| 2023×CE704 C – 2023×CE704 S |       | *     | *     | ns    | ns    | *      |
| CE704×2023 C – CE704×2023 S |       | *     | *     | ns    | ns    | *      |
| 2023 C – CE704 C            | ns    | *     | *     | *     | *     | *      |
| 2023 C – 2023×CE704 C       | ns    | ns    | *     | ns    | ns    | ns     |
| 2023 C – CE704×2023 C       | ns    | *     | *     | ns    | *     | ns     |
| CE704 C – 2023×CE704 C      | ns    | *     | ns    | ns    | ns    | *      |
| CE704 C – CE704×2023 C      | ns    | ns    | ns    | *     | ns    | *      |
| 2023×CE704 C – CE704×2023 C | ns    | ns    | *     | ns    | ns    | *      |
| 2023 S – CE704 S            |       | ns    | *     | *     | ns    | *      |
| 2023 S – 2023×CE704 S       |       | ns    | ns    | ns    | ns    | ns     |
| 2023 S – CE704×2023 S       |       | *     | *     | ns    | ns    | *      |
| CE704 S – 2023×CE704 S      |       | ns    | ns    | ns    | ns    | *      |
| CE704 S – CE704×2023 S      |       | *     | ns    | ns    | ns    | *      |
| 2023×CE704 S – CE704×2023 S |       | *     | ns    | ns    | ns    | ns     |

### Net transpiration rate (E)



|                             | Day 0 | Day 2 | Day 4 | Day 6 | Day 8 | Day 10 |
|-----------------------------|-------|-------|-------|-------|-------|--------|
| 2023 C – 2023 S             |       | ns    | ns    | *     | *     | *      |
| CE704 C – CE704 S           |       | *     | *     | ns    | *     | ns     |
| 2023xCE704 C – 2023xCE704 S |       | *     | ns    | *     | *     | *      |
| CE704x2023 C – CE704x2023 S |       | ns    | *     | ns    | ns    | *      |
| 2023 C – CE704 C            | ns    | *     | *     | ns    | *     | ns     |
| 2023 C – 2023xCE704 C       | *     | *     | ns    | ns    | ns    | *      |
| 2023 C – CE704x2023 C       | *     | *     | *     | *     | *     | ns     |
| CE704 C – 2023xCE704 C      | *     | ns    | *     | ns    | ns    | *      |
| CE704 C – CE704x2023 C      | ns    | *     | ns    | *     | *     | ns     |
| 2023xCE704 C – CE704x2023 C | *     | ns    | *     | *     | *     | ns     |
| 2023 S – CE704 S            |       | ns    | ns    | ns    | *     | ns     |
| 2023 S – 2023xCE704 S       |       | ns    | ns    | ns    | ns    | ns     |
| 2023 S – CE704x2023 S       |       | ns    | ns    | ns    | ns    | ns     |
| CE704 S – 2023xCE704 S      |       | ns    | ns    | ns    | ns    | ns     |
| CE704 S – CE704x2023 S      |       | ns    | ns    | ns    | ns    | ns     |
| 2023xCE704 S – CE704x2023 S |       | ns    | ns    | ns    | ns    | ns     |

### Net photosynthetic rate ( $P_N$ )



|                             | Day 0 | Day 2 | Day 4 | Day 6 | Day 8 | Day 10 |
|-----------------------------|-------|-------|-------|-------|-------|--------|
| 2023 C – 2023 S             |       | *     | ns    | ns    | ns    | *      |
| CE704 C – CE704 S           |       | *     | *     | *     | *     | ns     |
| 2023xCE704 C – 2023xCE704 S |       | *     | ns    | ns    | ns    | *      |
| CE704x2023 C – CE704x2023 S |       | *     | *     | *     | ns    | *      |
| 2023 C – CE704 C            | *     | ns    | *     | ns    | *     | ns     |
| 2023 C – 2023xCE704 C       | ns    | ns    | ns    | ns    | ns    | ns     |
| 2023 C – CE704x2023 C       | *     | *     | *     | *     | ns    | ns     |
| CE704 C – 2023xCE704 C      | *     | ns    | ns    | ns    | ns    | ns     |
| CE704 C – CE704x2023 C      | ns    | ns    | ns    | ns    | ns    | ns     |
| 2023xCE704 C – CE704x2023 C | *     | ns    | ns    | ns    | ns    | ns     |
| 2023 S – CE704 S            |       | ns    | ns    | ns    | ns    | ns     |
| 2023 S – 2023xCE704 S       |       | ns    | ns    | ns    | ns    | ns     |
| 2023 S – CE704x2023 S       |       | *     | ns    | ns    | ns    | *      |
| CE704 S – 2023xCE704 S      |       | ns    | ns    | ns    | *     | *      |
| CE704 S – CE704x2023 S      |       | *     | ns    | ns    | *     | *      |
| 2023xCE704 S – CE704x2023 S |       | *     | ns    | ns    | ns    | ns     |