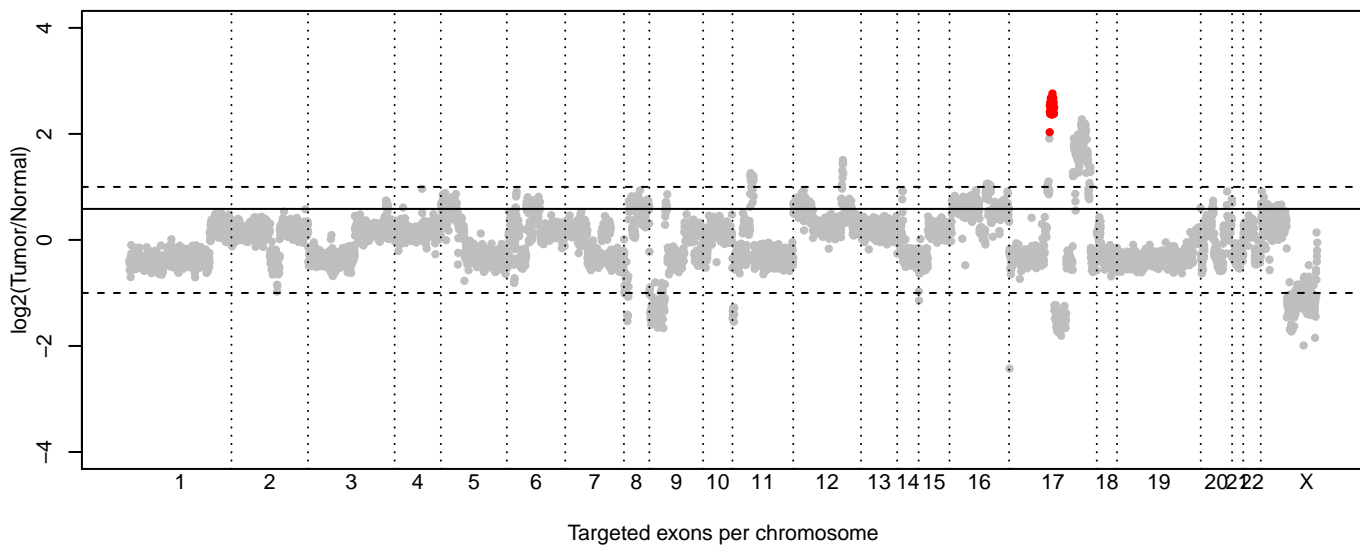
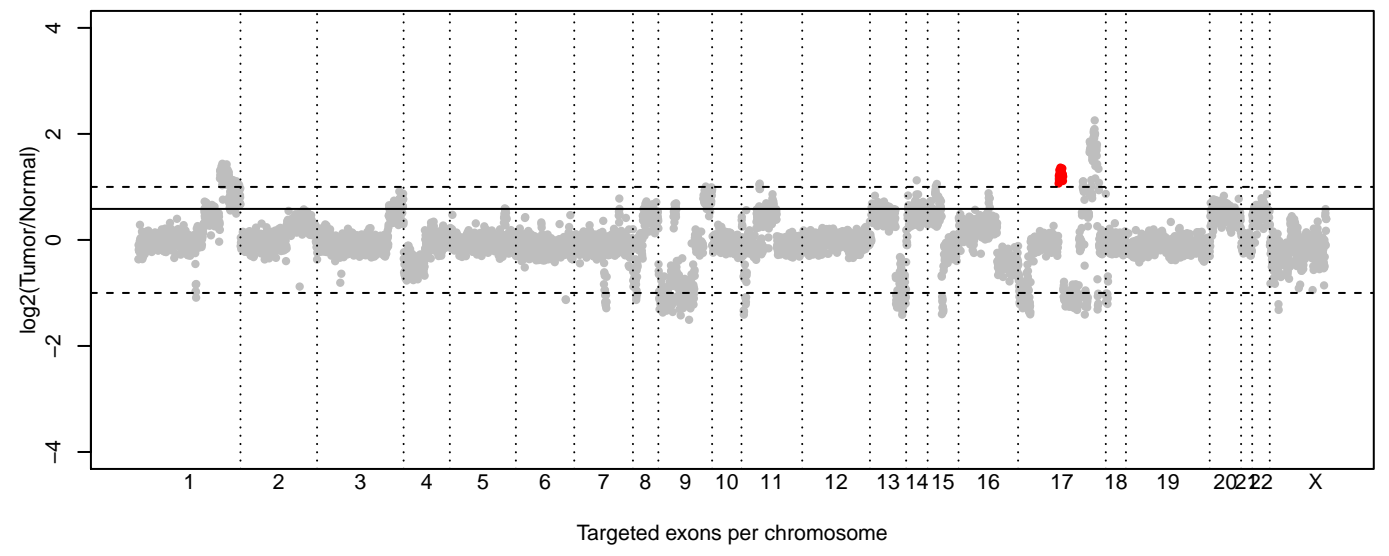


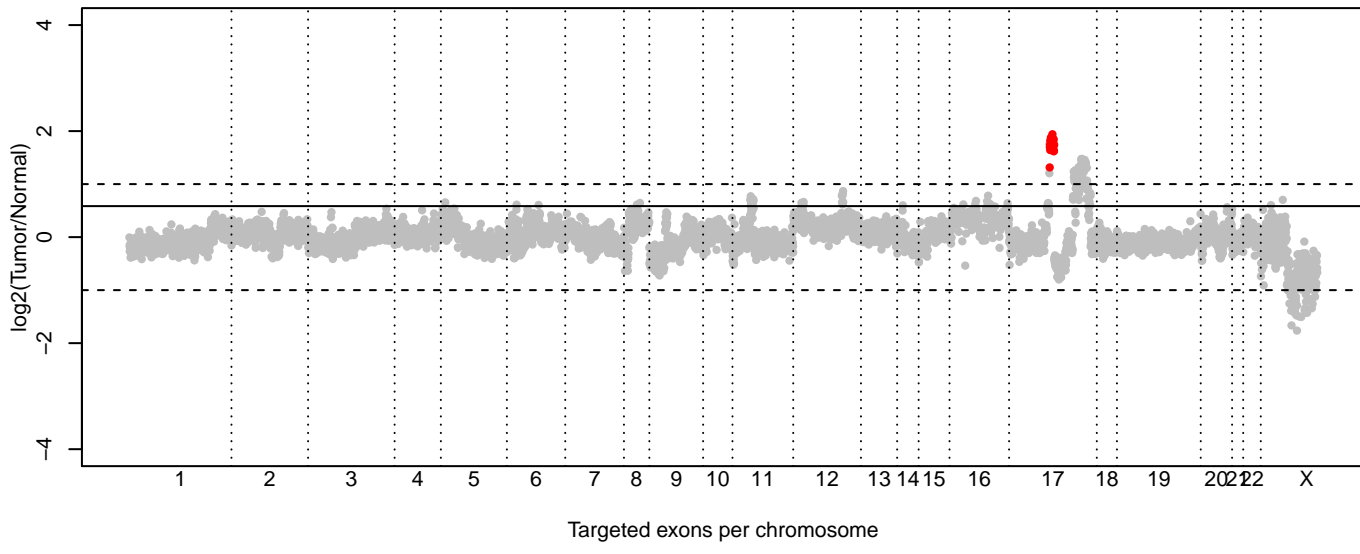
MDA-MB-361 cell line: no dilution (FC = 5.66)



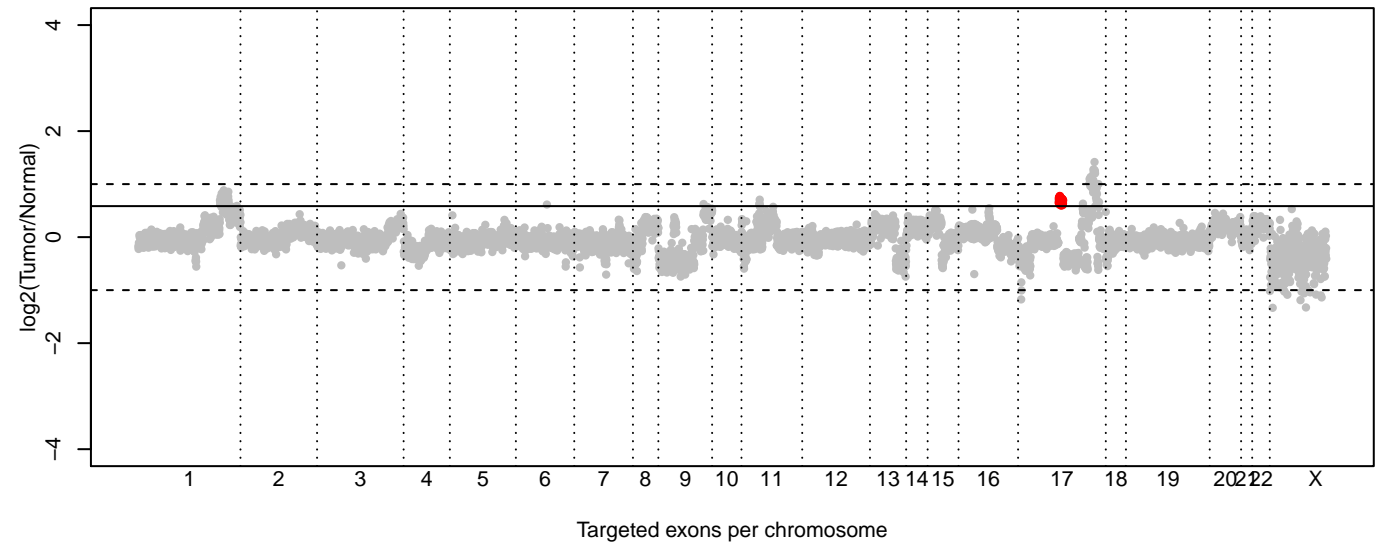
MDA-MB-453 cell line: no dilution (FC = 2.31)



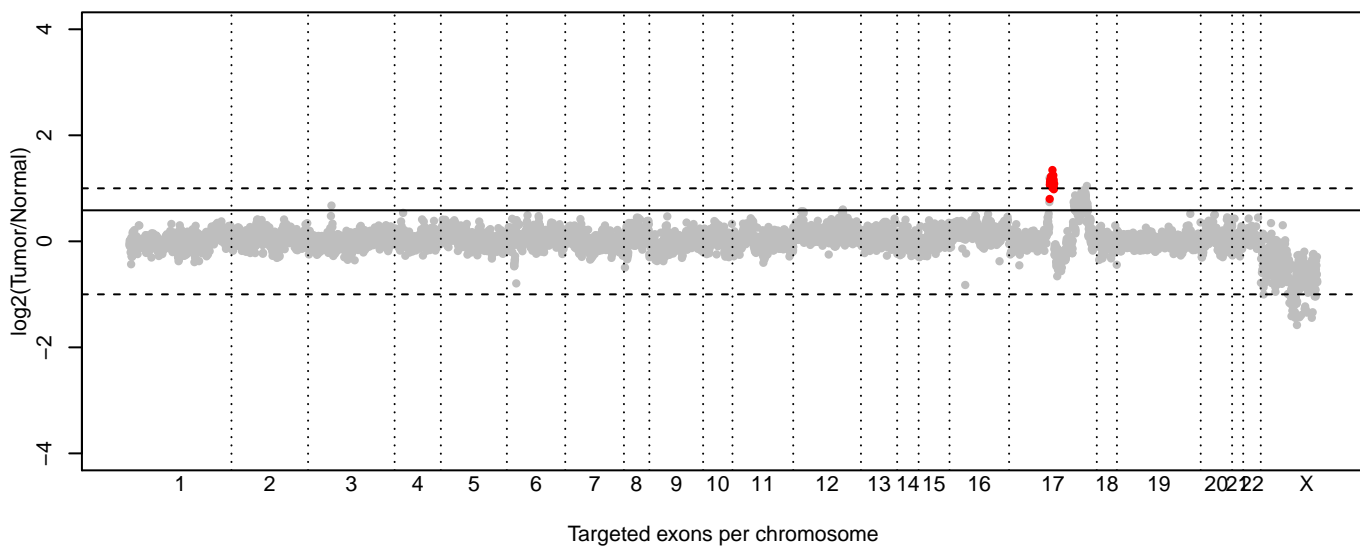
MDA-MB-361 cell line: 50% dilution (FC = 3.32)



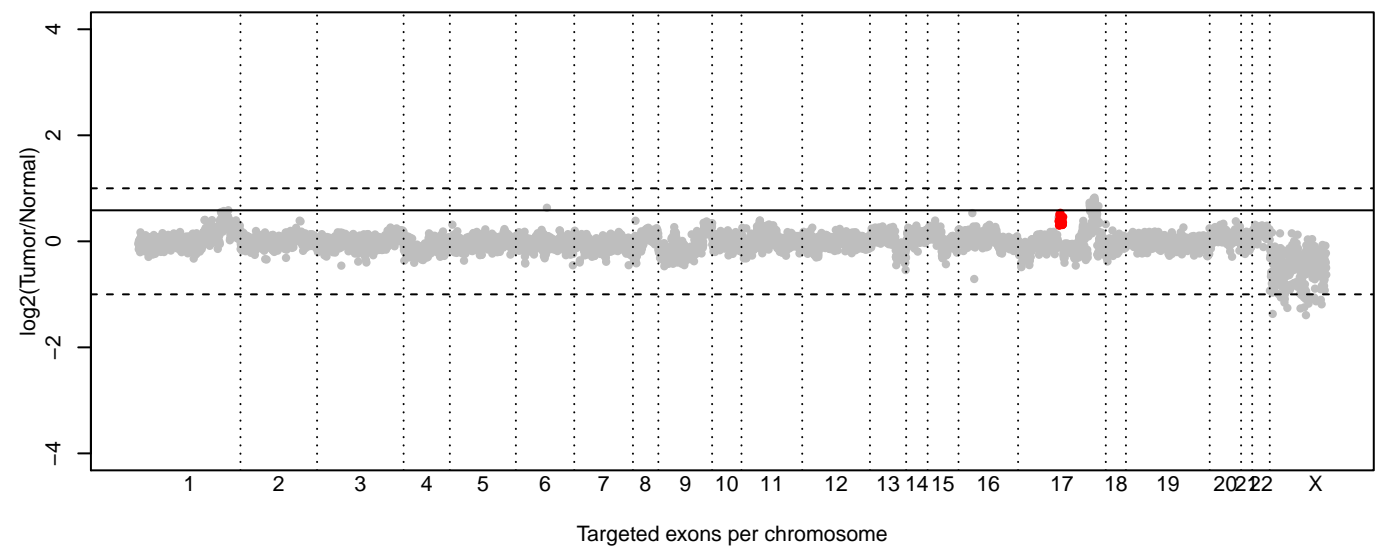
MDA-MB-453 cell line: 50% dilution (FC = 1.61)



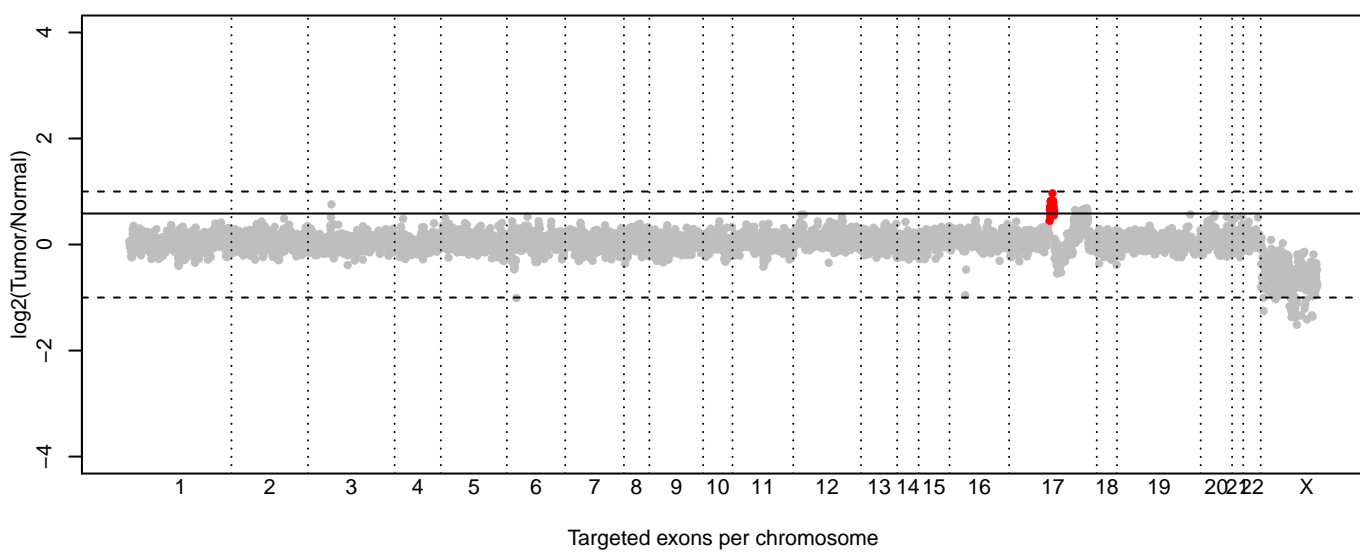
MDA-MB-361 cell line: 25% dilution (FC = 2.16)



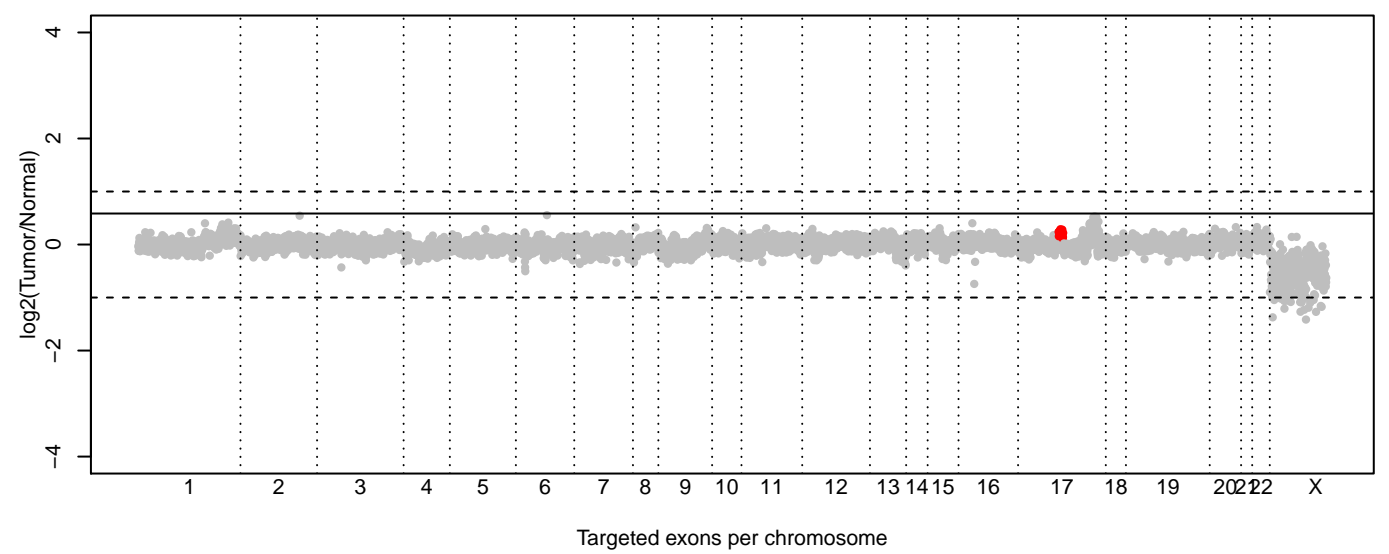
MDA-MB-453 cell line: 25% dilution (FC = 1.3)



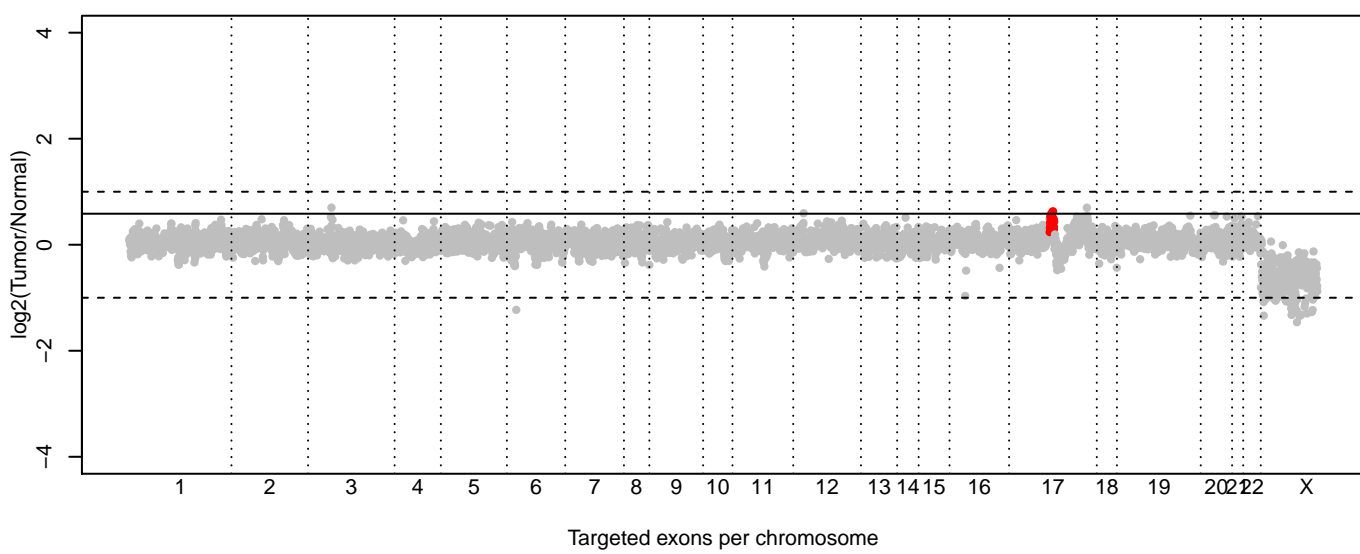
MDA-MB-361 cell line: 12.5% dilution (FC = 1.61)



MDA-MB-453 cell line: 12.5% dilution (FC = 1.15)



MDA-MB-361 cell line: 6.25% dilution (FC = 1.33)



MDA-MB-453 cell line: 6.25% dilution (FC = 1)

