

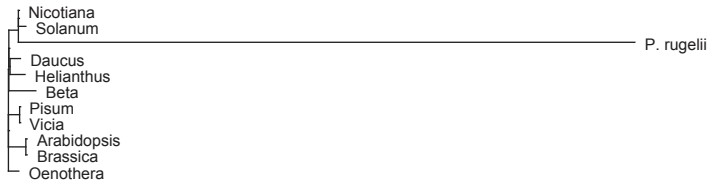
**A** *mt atp1*



*mt cox1*



*mt cob*



*mt cox2*



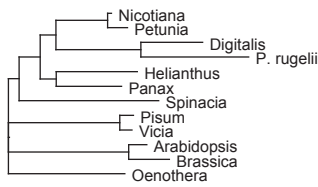
*mt LSU rDNA*



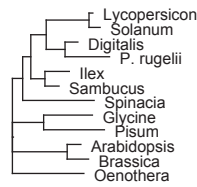
*mt SSU rDNA*



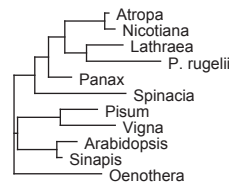
**B** *cp ndhF*



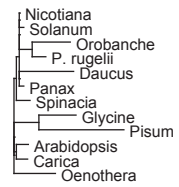
*cp rbcL*



*cp rpoA*

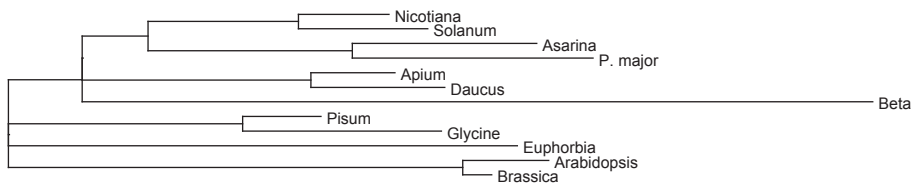


*cp SSU rDNA*

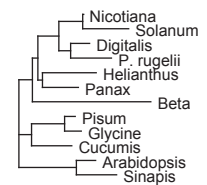


**C**

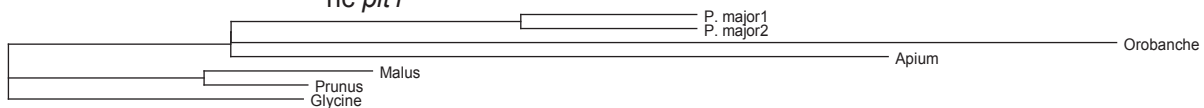
*nc sut1*



*nc SSU rDNA*



*nc plt1*



— 0.1 subst./site Protein Genes

— 0.01 subst./site rRNA Genes